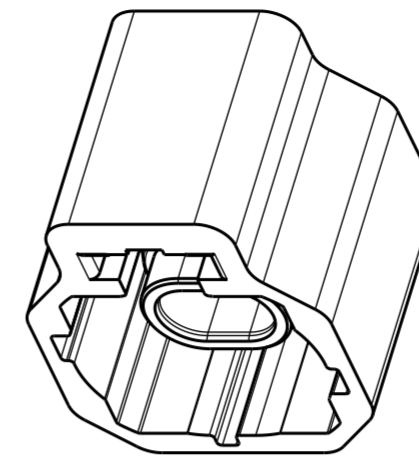
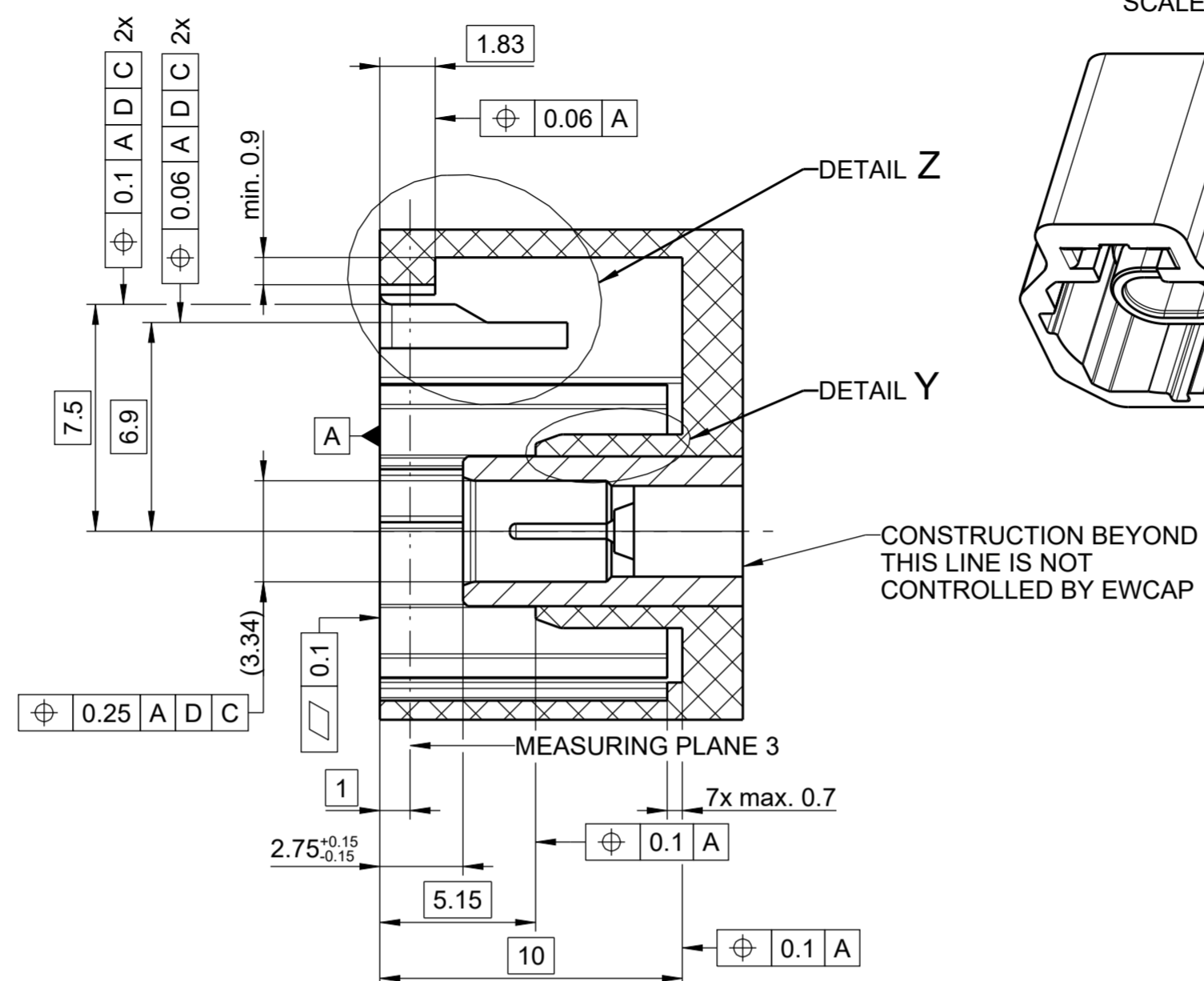
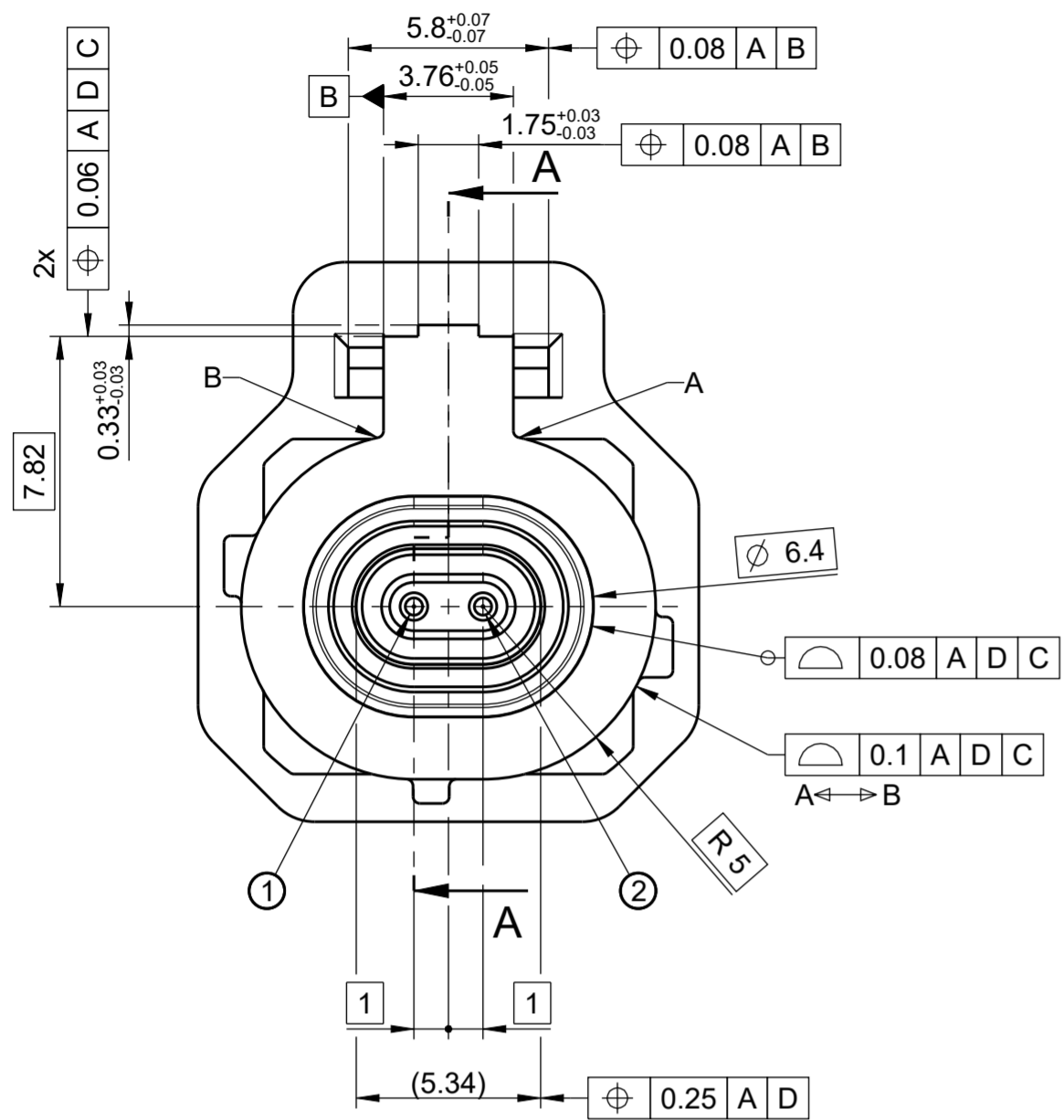


SECTION A-A

ISOMETRIC VIEW  
SCALE: 3:1



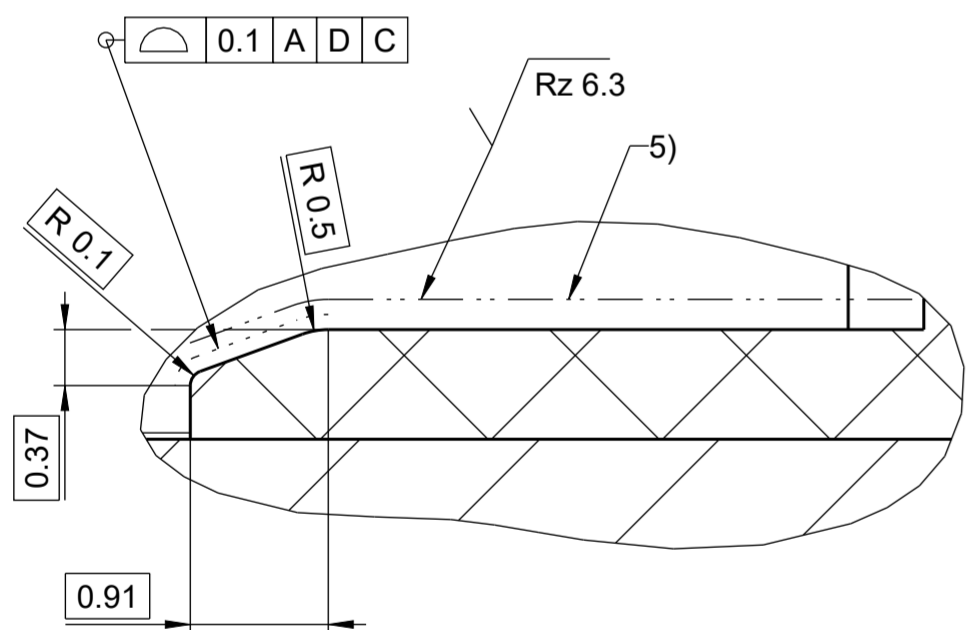
NOTICE:  
This drawing, or portions of it are controlled by the Electrical Wiring Components Application Partnership(EWCAP) a subgroup of the United States Council for Automotive Research LLC (USCAR LLC).

USCAR is an LLC consisting of members from FCA US LLC, Ford Motor Company and GM Corporation.

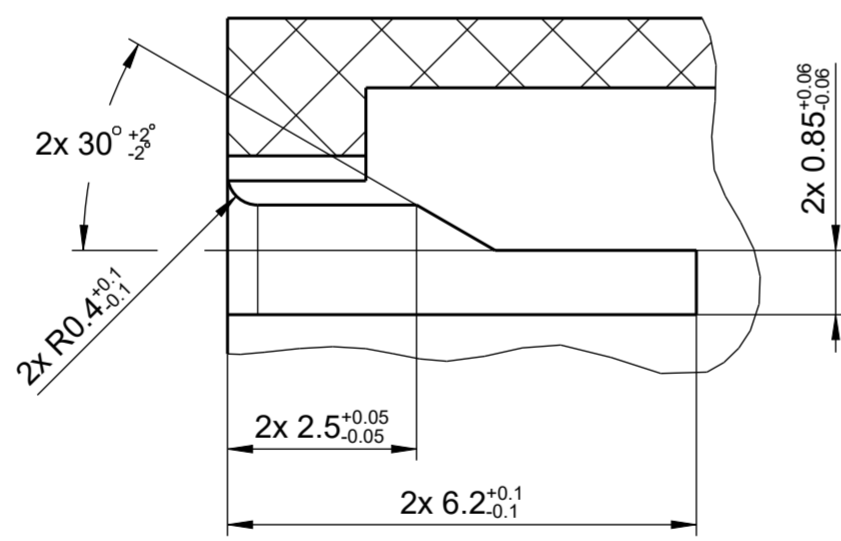
Any change to a EWCAP controlled portion of this drawing, including a revision record change must be approved, in writing, by the responsible EWCAP representative from each USCAR member company. Each EWCAP representative authorized to sign for his or her member company is responsible for obtaining all necessary approvals within that company prior to signing for the approval of the change.

EWCAP expressly prohibits any party from changing either any EWCAP controlled portion of this drawing or any associated tooling before receiving approval, signed by the authorized representatives, of the USCAR member companies. Reference to the signed change notice must be entered in the drawing control column.

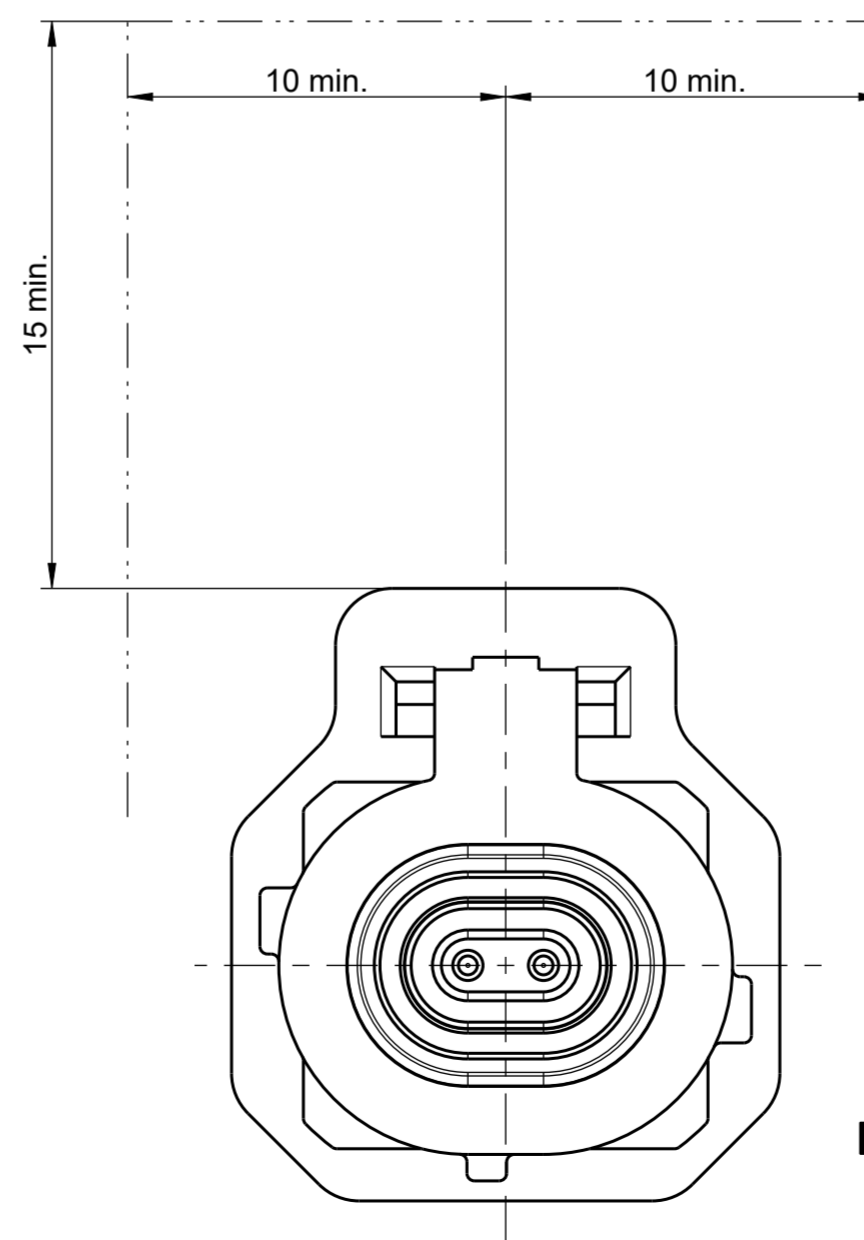
DETAIL Y  
20:1



DETAIL Z  
10:1



REQUIRED SPACE FOR ACTUATION



RECOMMENDED MATERIAL PROPERTIES

COMPONENT	PLASTIC HOUSING
TENSILE MODULUS	min. 6500 MPa
ELONGATION AT BREAK	min. 2 %
TENSILE STRENGTH BREAK	min. 100 MPa

NOTES:

- 1) BASE DOCUMENT FOR THE CONTACT IS THE USCAR DRAWING: 777-U-002-1-Z01 (SHEET 3)
- 2) ○ = NUMBER FOR PINNING
- 3) ALL NON-DIMENSIONED RADII: R0.2±0.05
- 4) MEASURE WITHIN REFERENCE SYSTEM A D
- 5) SEALING SURFACE TO BE FREE OF SURFACE FLAWS
- 6) ESCAPE PATH FOR CONDENSATION IS REQUIRED BUT NOT SHOWN
- 7) DEFINE REFERENCES B, C AND D AT MEASURING PLANE 3

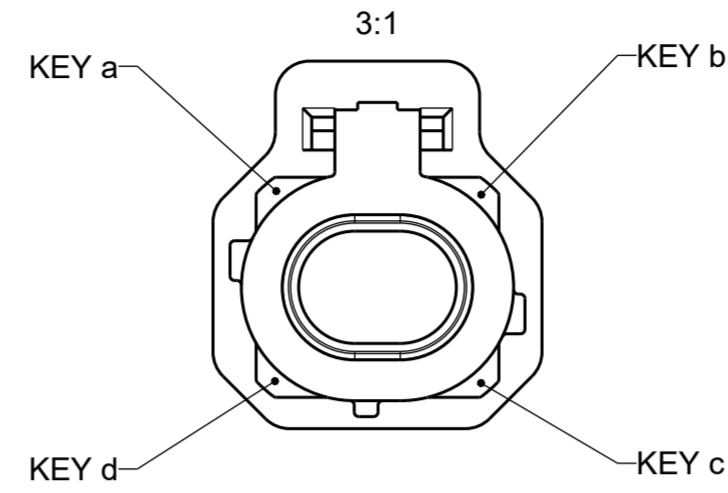
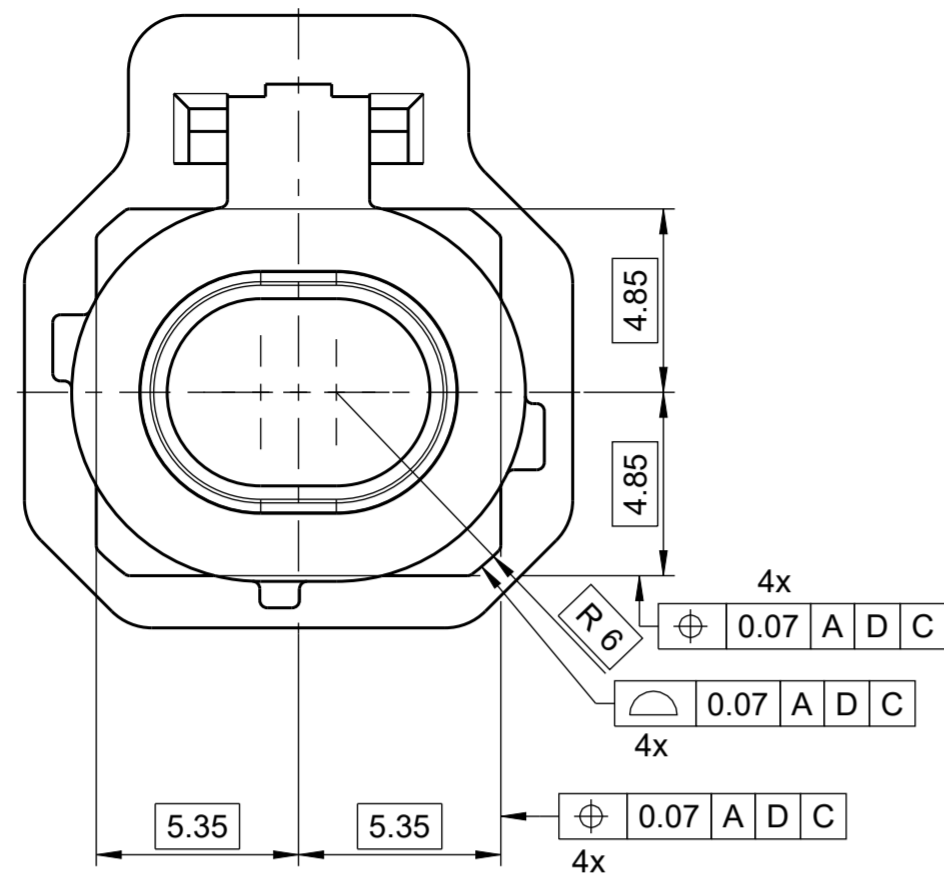
A		INITIAL RELEASE	02/01/22		
CHANGE SERIAL NUMBER	LET	REVISION RECORD	DATE	DWN	CHK
TOLERANCES (UNLESS OTHERWISE SPECIFIED)			THIRD ANGLE PROJECTION		
DIMENSIONS ARE IN MILLIMETERS					
DIMENSIONING AND TOLERANCE IN ACCORDANCE WITH ASME Y14.5-2009					

USCAR-EWCAP

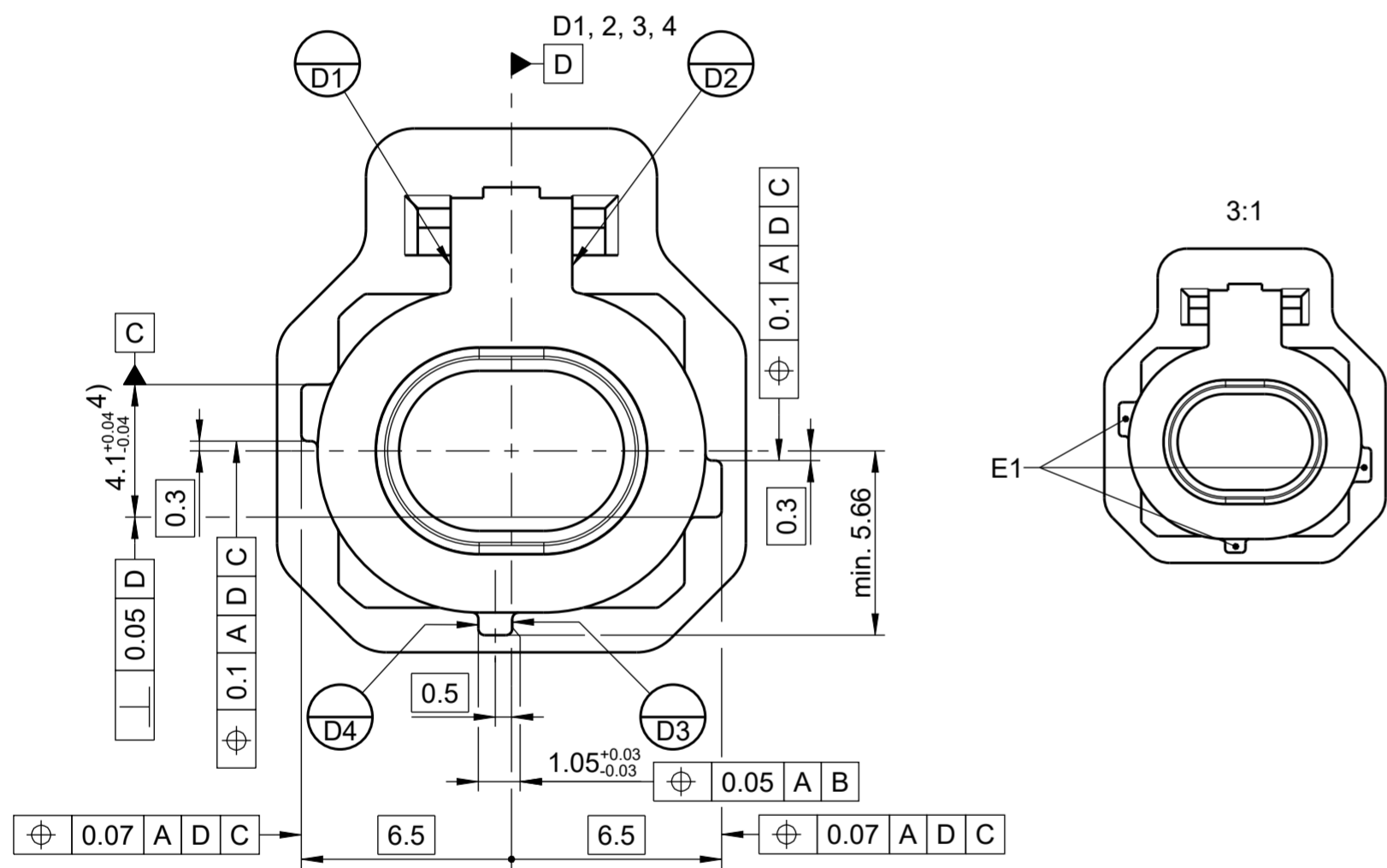
SCALE	5:1	DRAWN BY	S. STROM	CHECKED BY	P. SCHROEDER	DATE	02/07/22
TITLE							
10GB ETHERNET CONNECTOR. 100 OHM DIFFERENTIAL PAIR. SINGLE INTERFACE WATERPROOF.							
SHEET	DRAWING NUMBER	SIZE	DO NOT SCALE DRAWING	COMPUTER AIDED DRAWING	REVISION LEVEL		
1 of 3	777-S-002-1-Z01	A2			A		

**Rosenberger**  
D-84526 Tittmoning  
Germany

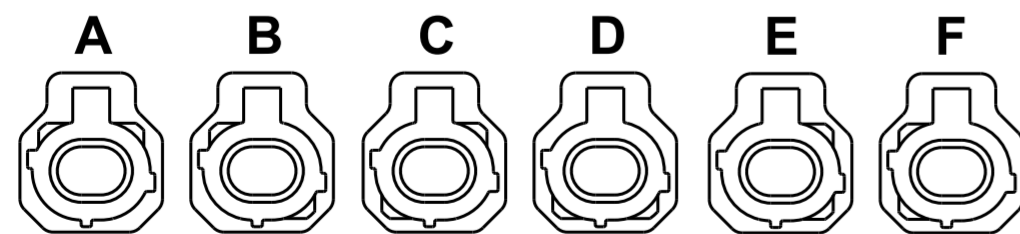
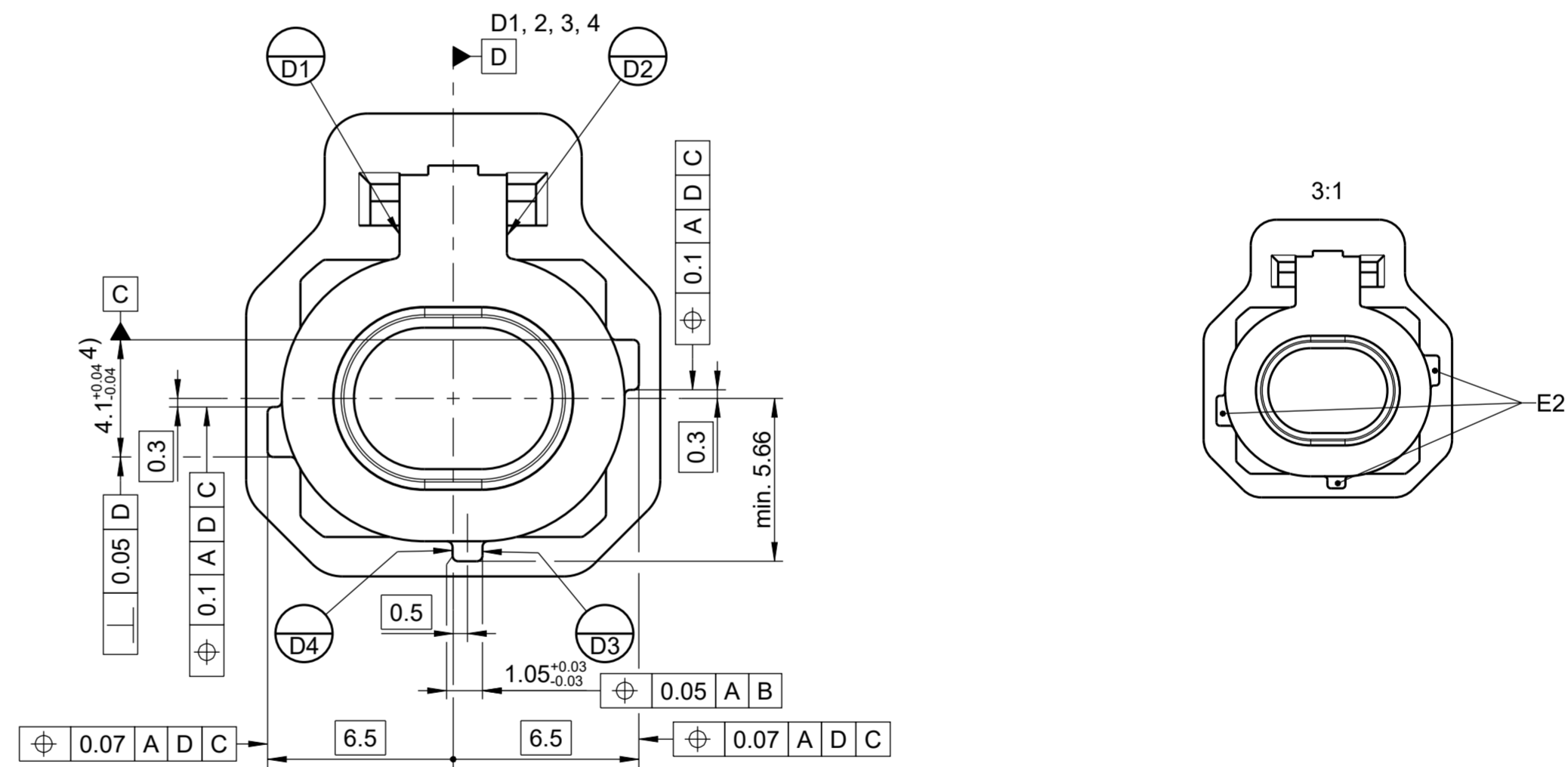
CODING



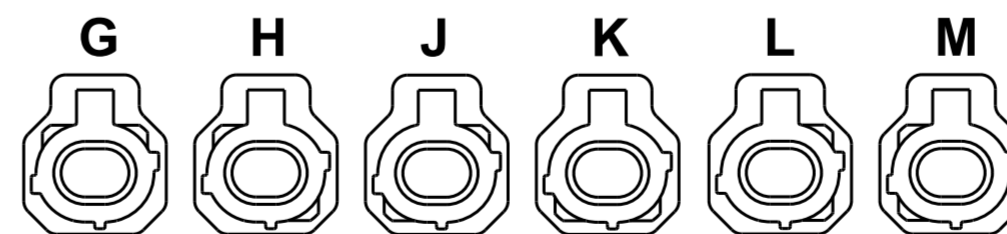
GUIDANCE E1



GUIDANCE E2



EWCAP REF #	CODE	KEY	Farbe color	SIMILAR RAL-NO
777-S-002-1-A01	A	a-b-E1	JET BLACK	9005
777-S-002-1-B01	B	a-c-E1	PURE WHITE	9010
777-S-002-1-C01	C	b-d-E1	LIGHT BLUE	5012
777-S-002-1-D01	D	c-d-E1	CLARET VIOLET	4004
777-S-002-1-E01	E	b-c-E1	MAY GREEN	6017
777-S-002-1-F01	F	a-d-E1	NUT BROWN	8011



EWCAP REF #	CODE	KEY	Farbe color	SIMILAR RAL-NO
777-S-002-1-G01	G	a-b-E2	PLATINUM GREY	7036
777-S-002-1-H01	H	a-c-E2	LIGHT PINK	3015
777-S-002-1-J01	J	b-d-E2	BEIGE	1001
777-S-002-1-K01	K	c-d-E2	CURRY	1027
777-S-002-1-L01	L	b-c-E2	YELLOW GREEN	6018
777-S-002-1-M01	M	a-d-E2	PASTEL ORANGE	2003

**Rosenberger**

D-84526 Tittmoning  
Germany

TOLERANCES (UNLESS OTHERWISE SPECIFIED)		THIRD ANGLE PROJECTION	
DIMENSIONS ARE IN MILLIMETERS			
DIMENSIONING AND TOLERANCE IN ACCORDANCE WITH ASME Y14.5-2009			

*USCAR-EWCAP*

SCALE: 5:1	DRAWN BY: S. STROM	CHECKED BY: P. SCHROEDER	DATE: 02/07/22
------------	--------------------	--------------------------	----------------

TITLE  
**10GB ETHERNET CONNECTOR.**  
 100 OHM DIFFERENTIAL PAIR. SINGLE INTERFACE WATERPROOF.

SHEET: 2 of 3	DRAWING NUMBER: 777-S-002-1-Z01	SIZE: A2	DO NOT SCALE DRAWING COMPUTER AIDED DRAWING	REVISION LEVEL: A
---------------	---------------------------------	----------	--	-------------------

NOTICE

EWCAP HAS SELECTED COMMON DIMENSIONS FOR THE CONNECTOR(S) DEPICTED AND DESCRIBED HEREIN (LISTED BELOW). FURTHER, EWCAP HAS SELECTED FOR PUBLICATION THIS DRAWING (AND ITS COMPANION ELECTRONIC MODEL) PREPARED BY ROSENBERGER AS REPRESENTATIVE OF A CONNECTOR HAVING THESE DIMENSIONS. IN EXCHANGE FOR THE CONSIDERATION OF THE SELECTION OF THIS DRAWING FOR PUBLICATION (INCLUDING POSTING ON EWCAP'S WEB SITE) AND OTHER GOOD AND VALUABLE CONSIDERATION FLOWING FROM THIS SECTION, ROSENBERGER HEREBY AGREES ON BEHALF OF ITSELF AND ITS SUCCESSORS AND ASSIGNS, WITH RESPECT TO ANY COPYRIGHTS IT MAY HAVE IN THIS DRAWING AS WELL AS ANY PATENT RIGHTS IT MAY HAVE IN THE CONNECTOR ILLUSTRATED IN THIS DRAWING, NOT TO ENFORCE SUCH COPYRIGHTS AND PATENTS AGAINST ANY PERSON OR ENTITY ON ACCOUNT OF THEIR ACTIVITIES TO MAKE, HAVE MADE, USE AND SELL THE CONNECTOR ILLUSTRATED IN THIS DRAWING FOR VEHICULAR APPLICATIONS. THE TERM "CONNECTOR" AS USED IN THIS PARAGRAPH IS LIMITED SOLELY TO THE STRUCTURE SPECIFICALLY ILLUSTRATED IN THIS DRAWING.

SIGNED M. ZEBHAUSER FOR ROSENBERGER. DATE: 02/07/22  
 NAME AND TITLE OF SIGNER: M. ZEBHAUSER

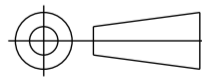
THE PERSON SIGNING THIS AGREEMENT REPRESENTS AND WARRANTS THAT (1) HE OR SHE IS DULY AUTHORIZED AND HAS LEGAL CAPACITY TO EXECUTE AND DELIVER AGREEMENT ON BEHALF OF ROSENBERGER, (2) THE EXECUTION AND DELIVERY OF THIS AGREEMENT AND THE PERFORMANCE OF ROSENBERGER PURSUANT TO THE TERMS OUTLINED ABOVE HAVE BEEN DULY AUTHORIZED AND THAT THIS AGREEMENT IS A VALID AND LEGAL AGREEMENT BINDING ON FEBRUARY 7, 2022 AND ENFORCEMENT IN ACCORDANCE WITH ITS TERMS.

NO WARRANTIES OR INDEMNITIES OF ANY KIND ARE MADE OR IMPLIED BY ROSENBERGER OR EWCAP. IN PARTICULAR THERE ARE NO EXPRESS OR IMPLIED WARRANTIES OF FITNESS FOR A PARTICULAR PURPOSE, MERCHANTABILITY, NON-INFRINGEMENT OR ANY OTHER WARRANTY OF ANY KIND. IN ADDITION, THERE ARE NO EXPRESS OR IMPLIED WARRANTIES OR INDEMNITIES OF ANY KIND RELATING TO THIRD PARTY CLAIMS ARISING UNDER THE INTELLECTUAL PROPERTY LAWS OF ANY COUNTRY. ANYONE USING THE INFORMATION IN THIS DRAWING DOES SO AT THEIR OWN RISK.

APPLICABLE EWCAP DRAWING NUMBERS:  
 777-U-002-1-Z01

**Rosenberger**

D-84526 Tittmoning  
 Germany

TOLERANCES (UNLESS OTHERWISE SPECIFIED)		THIRD ANGLE PROJECTION	
DIMENSIONS ARE IN MILLIMETERS			
DIMENSIONING AND TOLERANCE IN ACCORDANCE WITH ASME Y14.5-2009			
<i>USCAR-EWCAP</i>			
SCALE ---	DRAWN BY S. STROM	CHECKED BY P. SCHROEDER	DATE 02/07/22
TITLE <b>10GB ETHERNET CONNECTOR. 100 OHM DIFFERENTIAL PAIR. SINGLE INTERFACE WATERPROOF.</b>			
SHEET 3 of 3	DRAWING NUMBER <b>777-S-002-1-Z01</b>	SIZE <b>A2</b>	REVISION LEVEL <b>A</b>
		DO NOT SCALE DRAWING COMPUTER AIDED DRAWING	