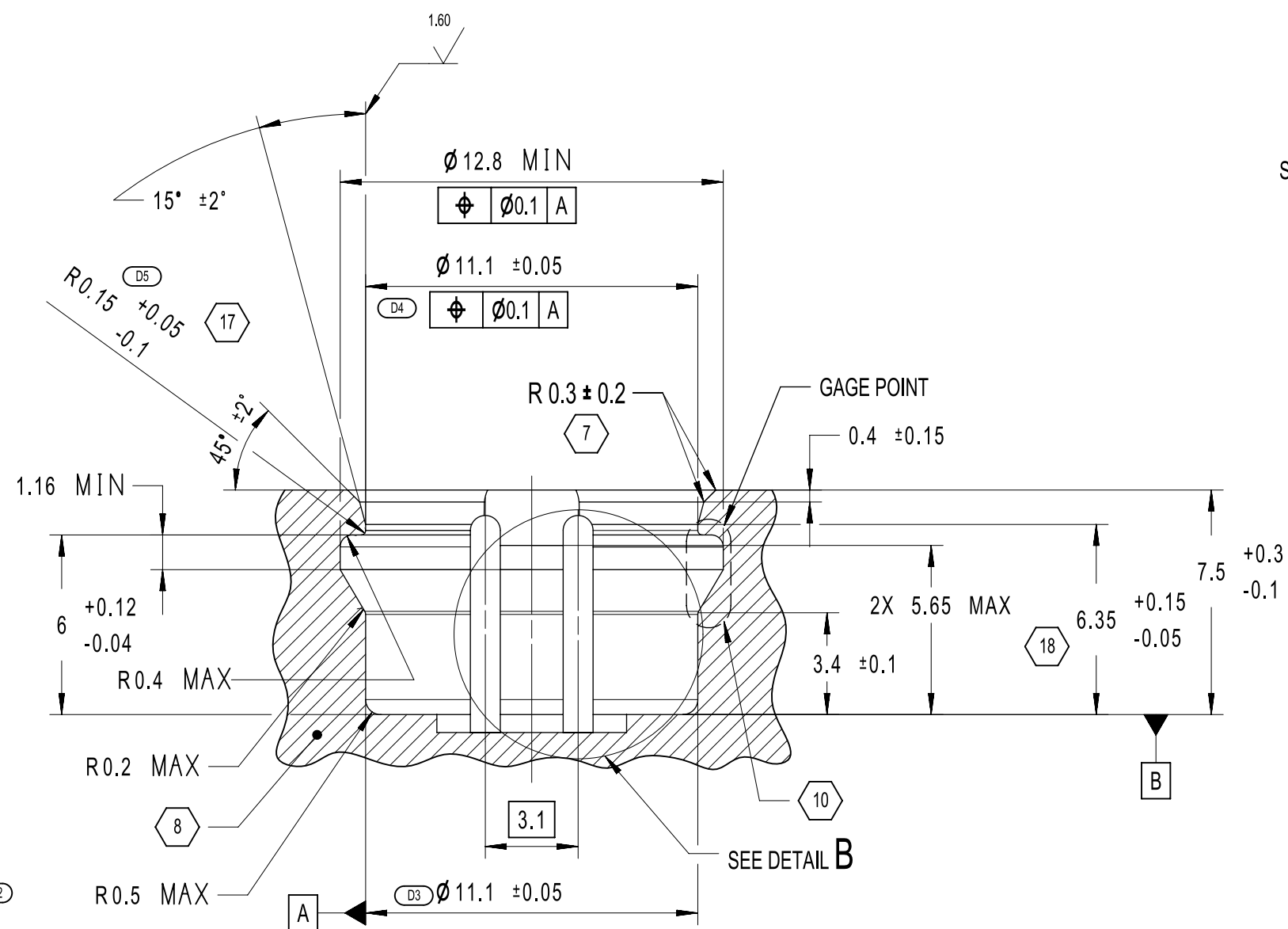
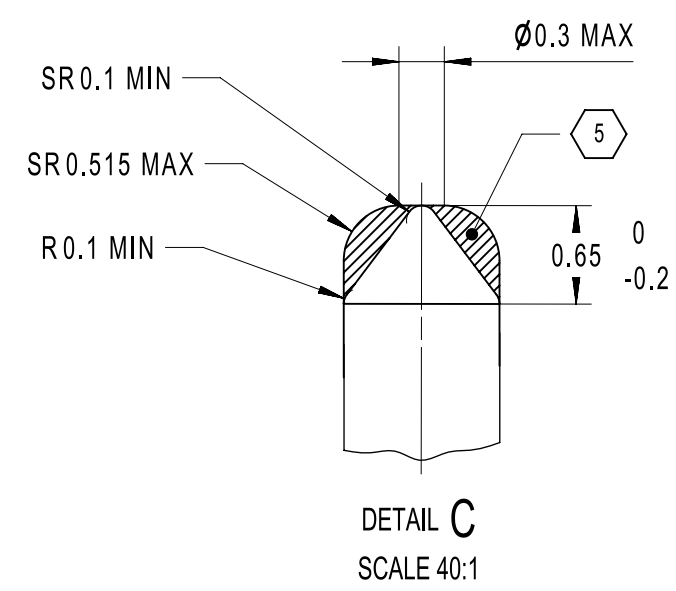
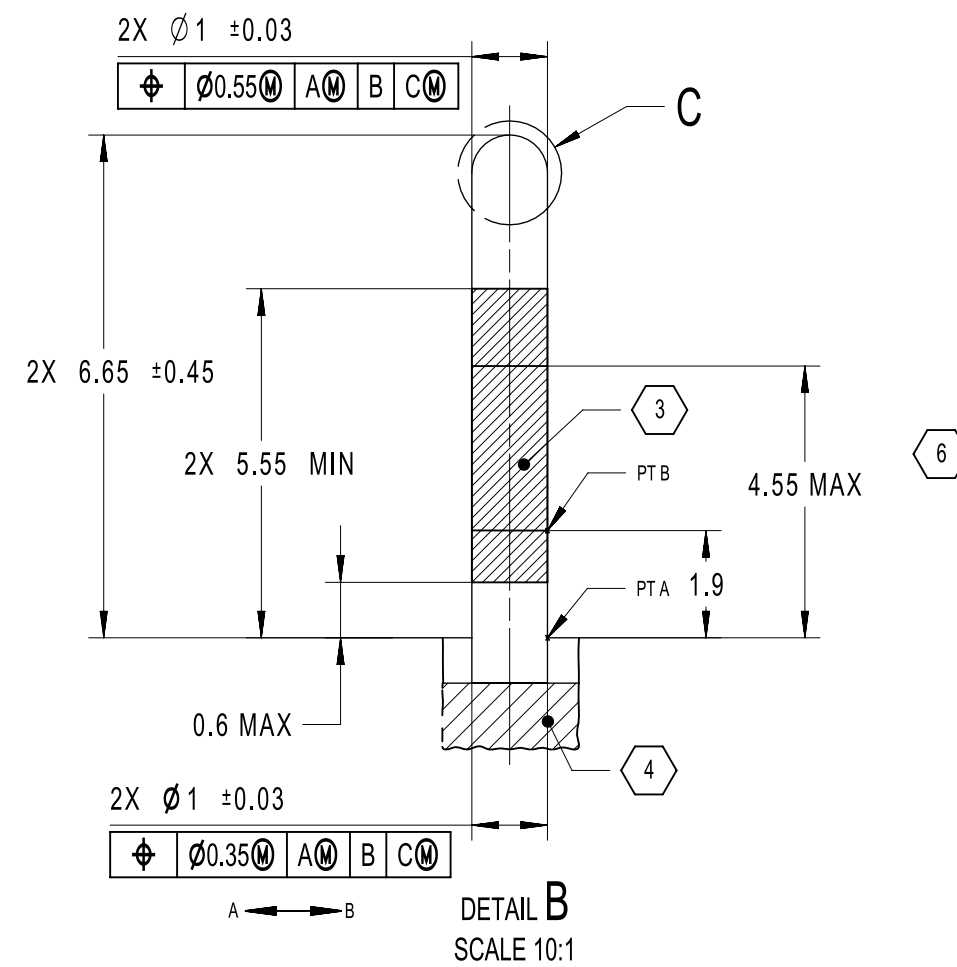


ITEM 1
(MATES WITH SERVICEABLE STYLE CONNECTORS)



SECTION A-A



NOTICE:
This drawing, or portions of it are controlled by the Electrical Wiring Components Application Partnership(EWCAP) a subgroup of the United States Council for Automotive Research LLC (USCAR LLC).

USCAR is an LLC consisting of members from FCA US LLC, Ford Motor Company and GM Corporation.

Any change to a EWCAP controlled portion of this drawing, including a revision record change must be approved, in writing, by the responsible EWCAP representative from each USCAR member company. Each EWCAP representative authorized to sign for his or her member company is responsible for obtaining all necessary approvals within that company prior to signing for the approval of the change.

EWCAP expressly prohibits any party from changing either any EWCAP controlled portion of this drawing or any associated tooling before receiving approval, signed by the authorized representatives, of the USCAR member companies. Reference to the signed change notice must be entered in the drawing control column.

145	E1	ADDED DIAMETER SYMBOL TO FEATURE CONTROL FRAME.	10 AUG 2017	HOL	RCB
108	D13 D12 D11 D10 D9 D8 D7 D6 D5 D4 D3 D2 D1	REVISED NOTE 3 ADDED ITEM 5 SHEET-2 ADDED AND SHEET-3 WAS SHEET-2 ADDED SECTION F-F KEY REVISED ITEM 5 GEOMETRY ADDED SECTION F-F ADDED VIEW IN CIRCLE W ADDED SECTION E-E WAS R0.2±0.1 ADDED TRUE POSITION CORRECTED DATUM A LOC REMOVED ITEM 3&4 UPDATED ISO REFERENCE	14 MAR 2017	HOL	RCB
102	C8 C7 C6 C5 C4 C3 C2 C1	ADDED AND REVISED SURFACE FINISH ADDED NOTES 17 & 18. REMOVED DATUM D AND REVISED NOTE 12. FEATURE CONTROL FRAME WAS DATUM D. ADDED PT A & PT B IN DETAIL B. DETAIL B FEATURE CONTROL FRAME WAS /L1. ADDED A ← B. ADDED DATUM D & F IN ITEM 1.	07 JUL 2014	RLA	JW
05		SHT 1, ADD ITEM 3; SHT 2, ADD ITEM4; SHT 1, ADD ITEM 3 AND 4 TO TABLE ZONE A7-9; ADDED NOTES 14 AND 15; ADDED "REF: ITEM 3 AND ITEM 4" TO NOTE 10; ADDED DATUM D TO FEATURE FRAMES, ZONE L12 AND K12; CHANGED CONCENTRICITY TO POSITION CALLOUT ZONE E13; ADDED FLAG NOTE 2 TO ITEM 2A AND 2B; PER CN-080	02 DEC 2009	SRA	MH
04		SHT 1, ADD NOTE 13; SHT 2, ADD SEALED VARIANT VIEW	27 JUL 2006	KLS	DGB
03		REVISED NOTES 3,4&10; DETAIL B, REMOVED BELOW FLUSH DIMENSION;PAGE 2, ITEM 2A, ADDED Ø 6.45 BASIC DIM; ITEM 2B,ADDED Ø 6.45 BASIC AND R 0.35 BASIC DIM	16 JAN 2006	KLS	DGB
CHANGE SERIAL NUMBER	LET	REVISION RECORD	DATE	DWN	CHK

TOLERANCES (UNLESS OTHERWISE SPECIFIED)
DIMENSIONS ARE IN MILLIMETERS
ANGLES ± 1°

THIRD ANGLE PROJECTION

USCAR-EWCAP

SCALE 5:1 DRAWN BY L.PARTHEEBAN CHECKED BY H.HOLWEG DATE 05/03/2016

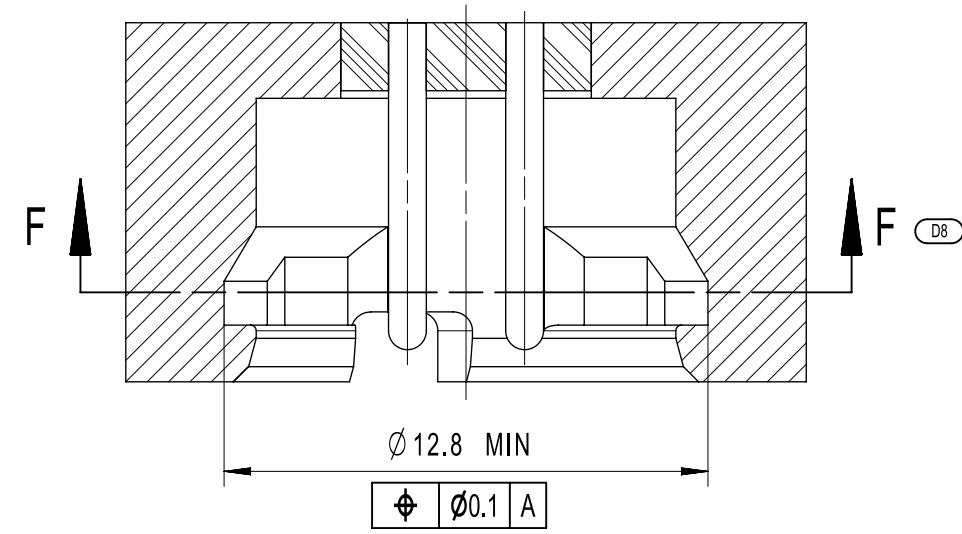
TITLE
USCAR STANDARD CONNECTOR POCKET
CHART DRAWING

SHEET 1 of 3	DRAWING NUMBER 999-U-002-1-Z02	SIZE C	DO NOT SCALE DRAWING COMPUTER AIDED DRAWING	REVISION LEVEL E
--------------	--------------------------------	--------	--	------------------

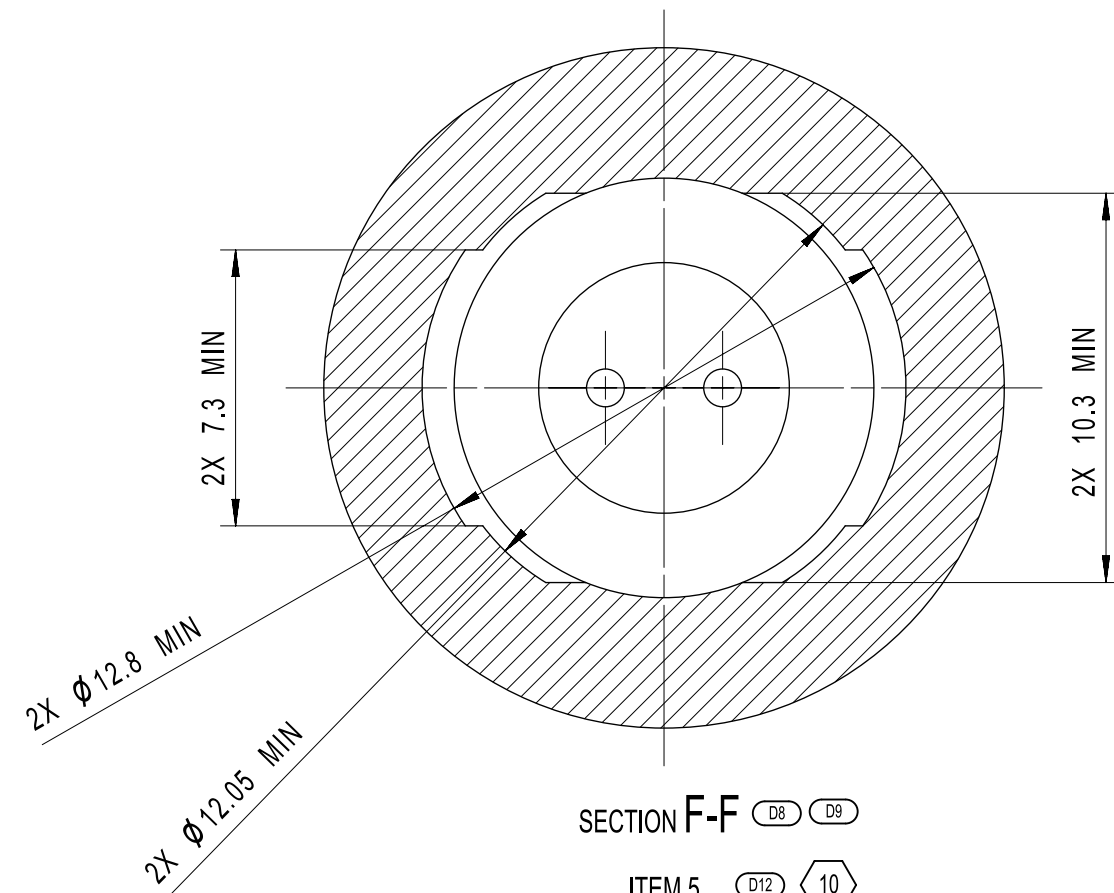
SQUIB HOLDER INTERFACE WITH MALE CONTACTS REF: ISO 19072-1

5	999-U-002-1-D02	SERVICEABLE	D	D12
2B	999-U-002-1-C02	UNIVERSAL	A	
2A	999-U-002-1-B02	UNIVERSAL	A	
1	999-U-002-1-A02	SERVICEABLE	A	
ITEM NUMBER	EWCAP P/N	OPTION TYPE	REV	

DELPHI
DELPHI PACKARD ELECTRICAL/ELECTRONIC ARCHITECTURE
NUREMBERG GERMANY
999-U-002-1-Z02



SECTION E-E (D6)



SECTION F-F (D8) (D9)

ITEM 5 (D12) (10)

SERVICEABLE NON 360° UNDERCUT LOCATION
(MATES WITH SERVICEABLE STYLE CONNECTORS)

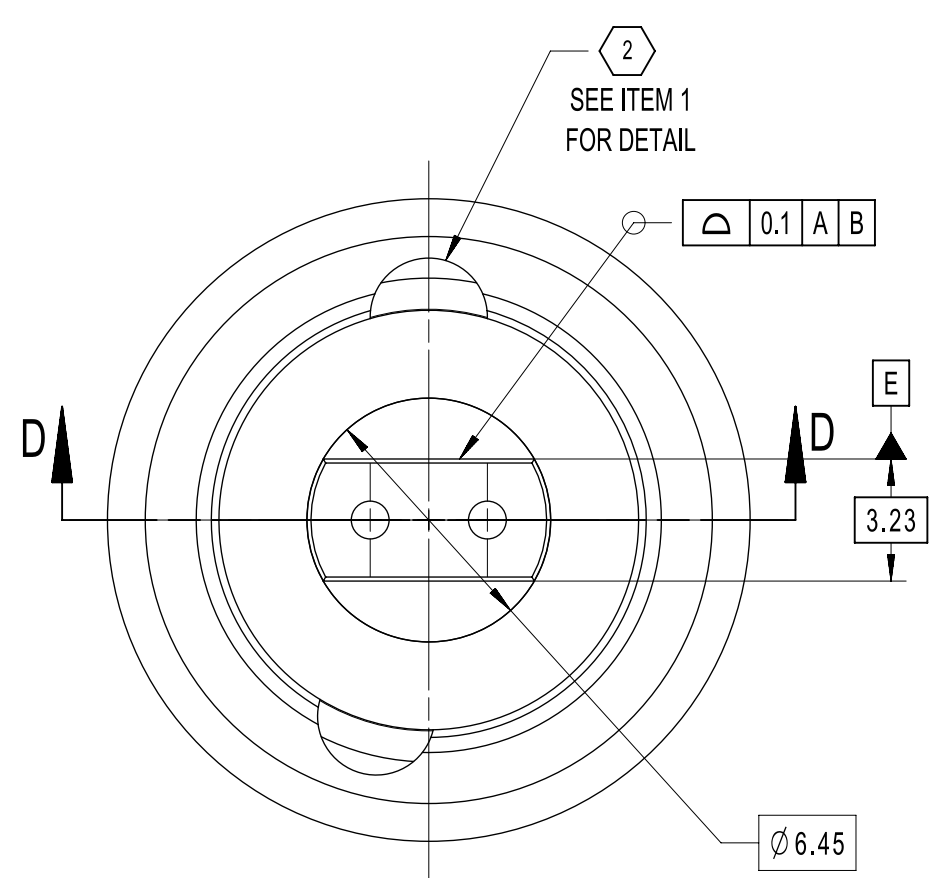
(D10) Key

1. Minimum area for undercut/groove is not revolving 360°
2. Ø11.86 MIN allowed for application (19072-4) existing before 19 September 2014 pocket design below Ø 12.05 MIN are not compatible with 19075-5 interface.

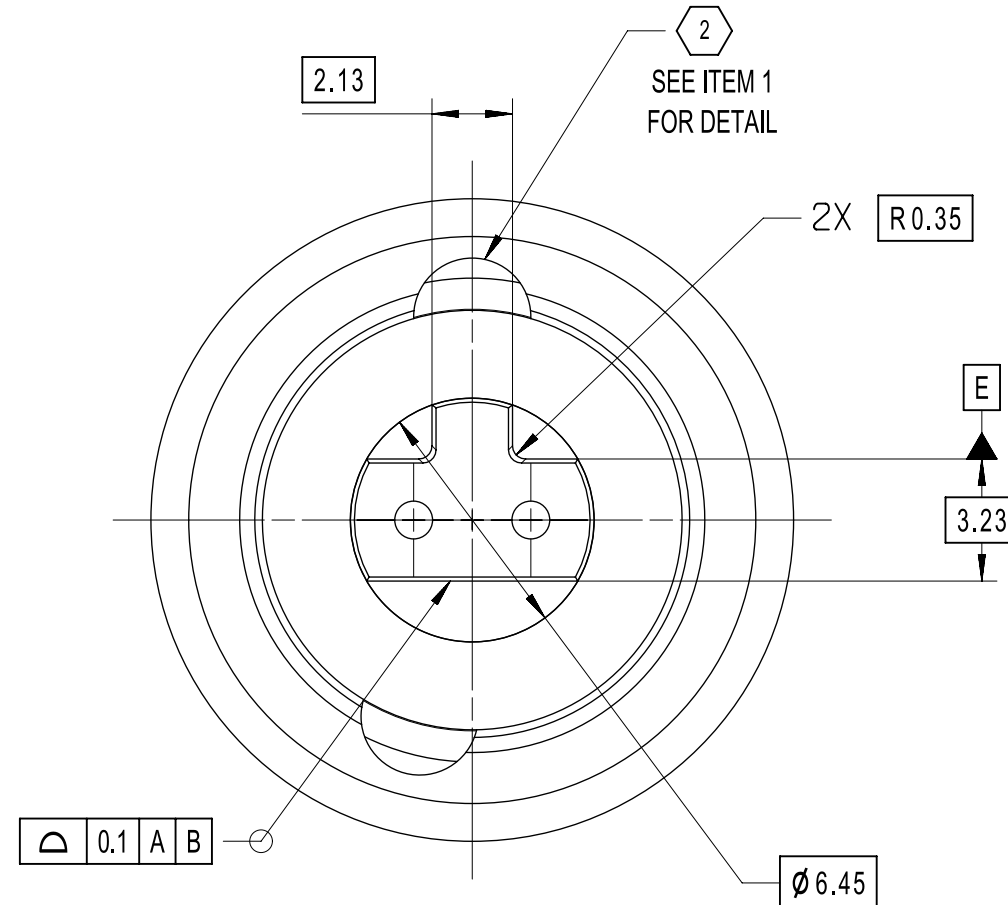
TOLERANCES (UNLESS OTHERWISE SPECIFIED)		THIRD ANGLE PROJECTION	
DIMENSIONS ARE IN MILLIMETERS			
ANGLES ± 1°			
<i>USCAR-EWCAP</i>			
SCALE	5:1	DRAWN BY	L.PARTHEEBAN
CHECKED BY	H.HOLWEG	DATE	05/03/2016
TITLE USCAR STANDARD CONNECTOR POCKET CHART DRAWING			
SHEET	2 of 3	DRAWING NUMBER	999-U-002-1-Z02
SIZE	C	DO NOT SCALE DRAWING	COMPUTER AIDED DRAWING
REVISION LEVEL	E		

DELPHI
DELPHI PACKARD ELECTRICAL/ELECTRONIC ARCHITECTURE
NUREMBERG GERMANY
999-U-002-1-Z02

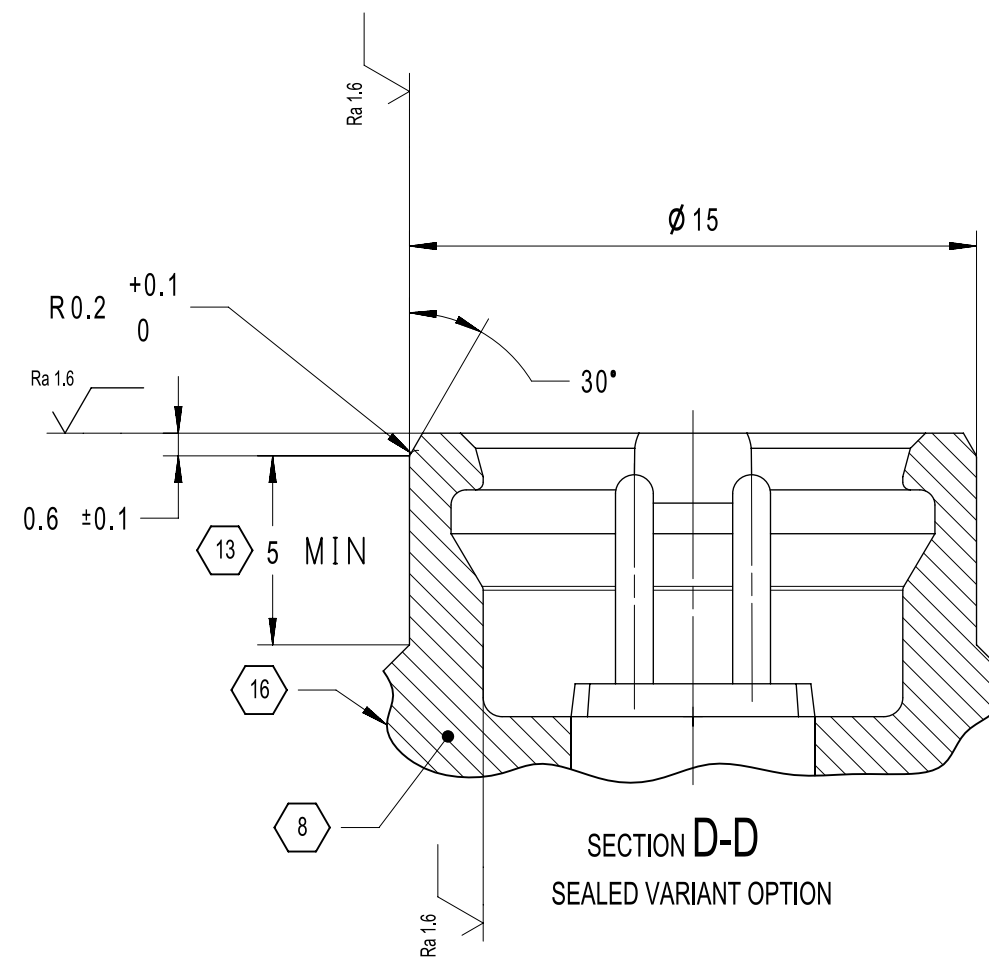
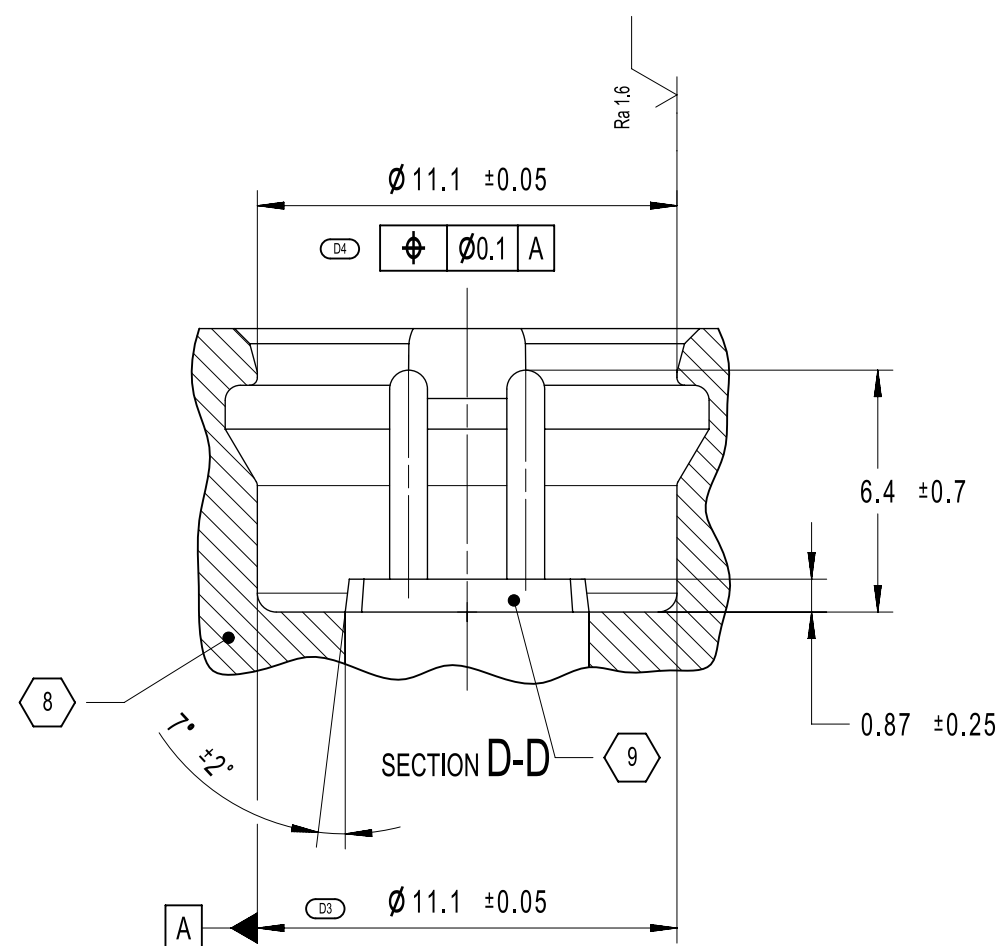
(D11)



ITEM 2A
ANTI-ROTATIONAL FEATURE
SYMETRICAL OPTION
WITHOUT RETAINER DESIGN
(MATES WITH UC STYLE CONNECTORS)



ITEM 2B
ANTI-ROTATIONAL FEATURE
ASSYMETRICAL OPTION
WITHOUT RETAINER DESIGN
(MATES WITH UC STYLE CONNECTORS)



NOTES:

SEE PAGE 1 FOR POCKET DIMENSIONS NOT SHOWN ABOVE
SEE PAGE 1 FOR USCAR/EWCAP PART NUMBER CHART

DELPHI
DELPHI PACKARD ELECTRICAL/ELECTRONIC ARCHITECTURE
NUREMBERG GERMANY
999-U-002-1-Z02

NOTES: UNLESS OTHERWISE SPECIFIED

- 1 DIMENSIONING & TOLERANCING PER ASME Y14.5M- 1994.
- 2 AREA IN WHICH ANY SHAPE GUARANTEEING POLARISATION IS ACCEPTABLE.
- 3 MALE CONTACT PLATING SHALL COMPLY WITH THE FOLLOWING CHARACTERISTICS:
Au PLATING ACCORDING TO ASTM B488, MIN. TYPE II (COATING PURITY), CODE C (HARDNESS) AND CLASS (COATING THICKNESS) TO BE AGREED BETWEEN THE CUSTOMER AND THE SUPPLIER BUT NOT LESS THAN CLASS 0.5; ASTM B735, POROSITY MAX. 2 PORES/MM²; DIAMETER X OF PORES WHICH ARE COUNTED $X > 0.05$ MM; Ni UNDER LAYER ACCORDING TO: ASTM B689, TYPE I OR II (COATING PURITY) AND CLASS (COATING THICKNESS) TO BE AGREED BETWEEN THE CUSTOMER AND THE SUPPLIER BUT WITH 2 μM MIN. Ni UNDER LAYER. MALE CONTACT SURFACE SHALL COMPLY WITH THE FOLLOWING CHARACTERISTIC SURFACE ROUGHNESS R, MAX. 0.4 μM ACCORDING TO DIN EN ISO 1302.
- 4 INITIATOR WITH PINS. ANY SHAPE ACCEPTED. SURFACE OF THE INITIATOR MUST BE FLUSH OR BELOW DATUM B BUT MUST MEET THE CONNECTOR/RETAINER FUNCTION REQUIREMENT.
- 5 ANY CONVEX OR STRAIGHT SHAPE INSIDE SHADED AREA ACCEPTED AT TOP OF PIN. SHALL BE SMOOTH AND BURR FREE.
- 6 MAXIMUM CONTACT POINT, THE FEMALE CONTACT MUST GUARANTEE A MINIMUM OF 1 mm IN THE CONTACT AREA.
- 7 ROUNDED AND BURR FREE
- 8 SQUIB HOLDER.
- 9 ANTI-ROTATIONAL UNIVERSAL CONFIGURATION (2 OPTIONS).
- 10 UNDERCUT GEOMETRY REQUIRED TO HOLD THE CONNECTOR AND RETAINER INSIDE THE SQUIB HOLDER. IN NOTED AREA, THE UNDERCUT SURFACE MUST MEET THE DIMENSIONS AS SPECIFIED ON THIS DRAWING BUT DOES NOT NEED TO BE A CONTINUOUS 360° SURFACE, AND MUST MEET THE SPECIFIED CONNECTOR RETAINER RETENTION REQUIREMENTS REGARDLESS OF MATERIAL. REF: ITEM 5.
- 11 CIRCUIT POLARITY SHALL BE MAINTAINED BY INITIATOR SUPPLIER.
- 12 DATUM D-F IS DEFINED AS THE PLANE DERIVED BETWEEN THE CENTERS OF THE TWO INITIATOR PINS.
- 13 SEALED VARIANT REQUIREMENTS TO BE AGREED UPON BETWEEN CUSTOMER AND SUPPLIER. THIS SURFACE IS RESERVED FOR SEALING.
- 16 FEATURE NOT CONTROLLED.
- 17 FOR EXISTING TOOLS TO PRODUCE PLASTIC POCKETS, THE FOLLOWING VALUE IS ALLOWED: R0.15 +0.05/-0.1
- 18 FOR EXISTING TOOLS TO PRODUCE PLASTIC POCKETS, THE FOLLOWING VALUE IS ALLOWED: 6.35 +0.15/-0.05

TOLERANCES (UNLESS OTHERWISE SPECIFIED)		THIRD ANGLE PROJECTION	
DIMENSIONS ARE IN MILLIMETERS			
ANGLES ± 1°			
<i>USCAR-EWCAP</i>			
SCALE	5:1	DRAWN BY	L.PARTHEEBAN
CHECKED BY	H.HOLWEG	DATE	05/03/2016
TITLE USCAR STANDARD CONNECTOR POCKET CHART DRAWING			
SHEET	DRAWING NUMBER	SIZE	DO NOT SCALE DRAWING
3 of 3	999-U-002-1-Z02	C	COMPUTER AIDED DRAWING
			REVISION LEVEL E