

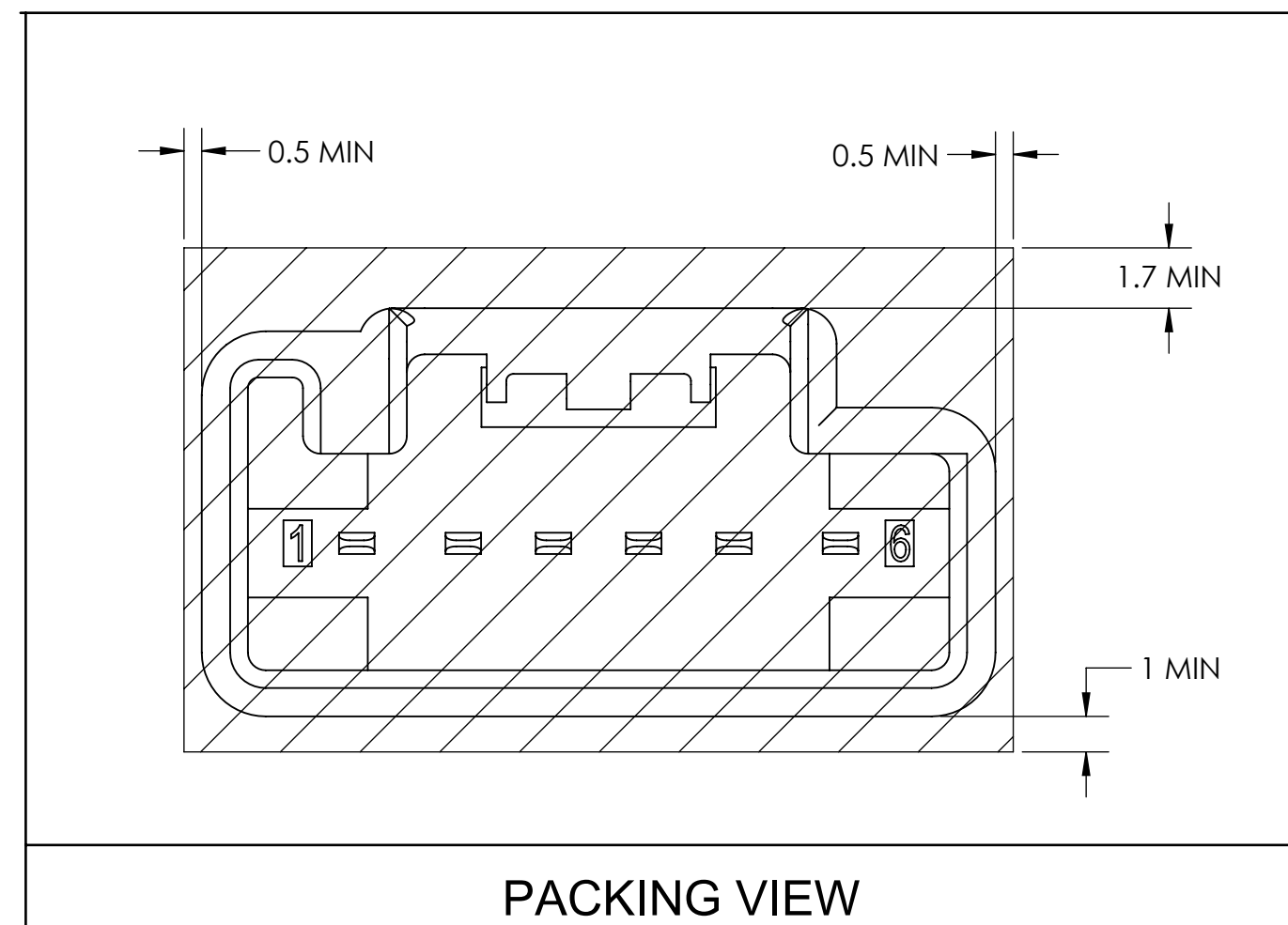
Technical drawing of a mechanical part, likely a bracket or support. The drawing shows a symmetrical profile with a central vertical axis. The part has a base with two mounting holes, a central section with a slot, and a top section with a curved profile. A dimension line indicates a length of 8.325 units.

Technical drawing of the rear view of a component. The drawing shows a rectangular base with a central raised section and two side sections. Dimensions are indicated by arrows: 6.6 for the width of the central section and 8.15 for the total width of the component.

Technical drawing of a mechanical part, likely a bracket or support. The drawing shows a top view with a central rectangular opening. The overall width is dimensioned as 8.15, and the width of the central opening is dimensioned as 6.6. The part has a complex profile with rounded corners and a central slot.

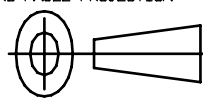
This technical drawing shows a 3D perspective view of a profile with a locking mechanism. The profile consists of a main channel and a separate locking piece. The locking piece has a T-shaped cross-section with a central ridge and two side flanges. It is designed to fit into the channel, where the side flanges engage with the channel walls to provide a secure connection. The drawing uses clean, black lines on a white background to illustrate the geometry and interlocking features of the components.

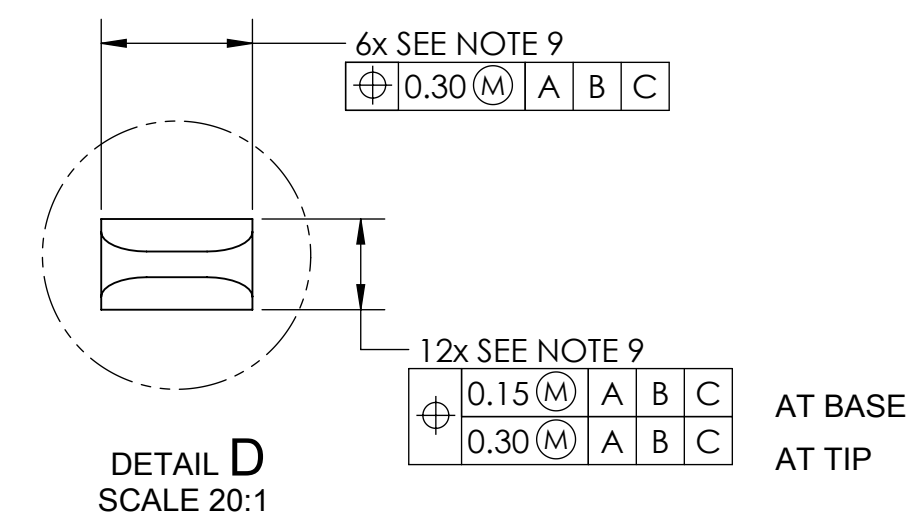
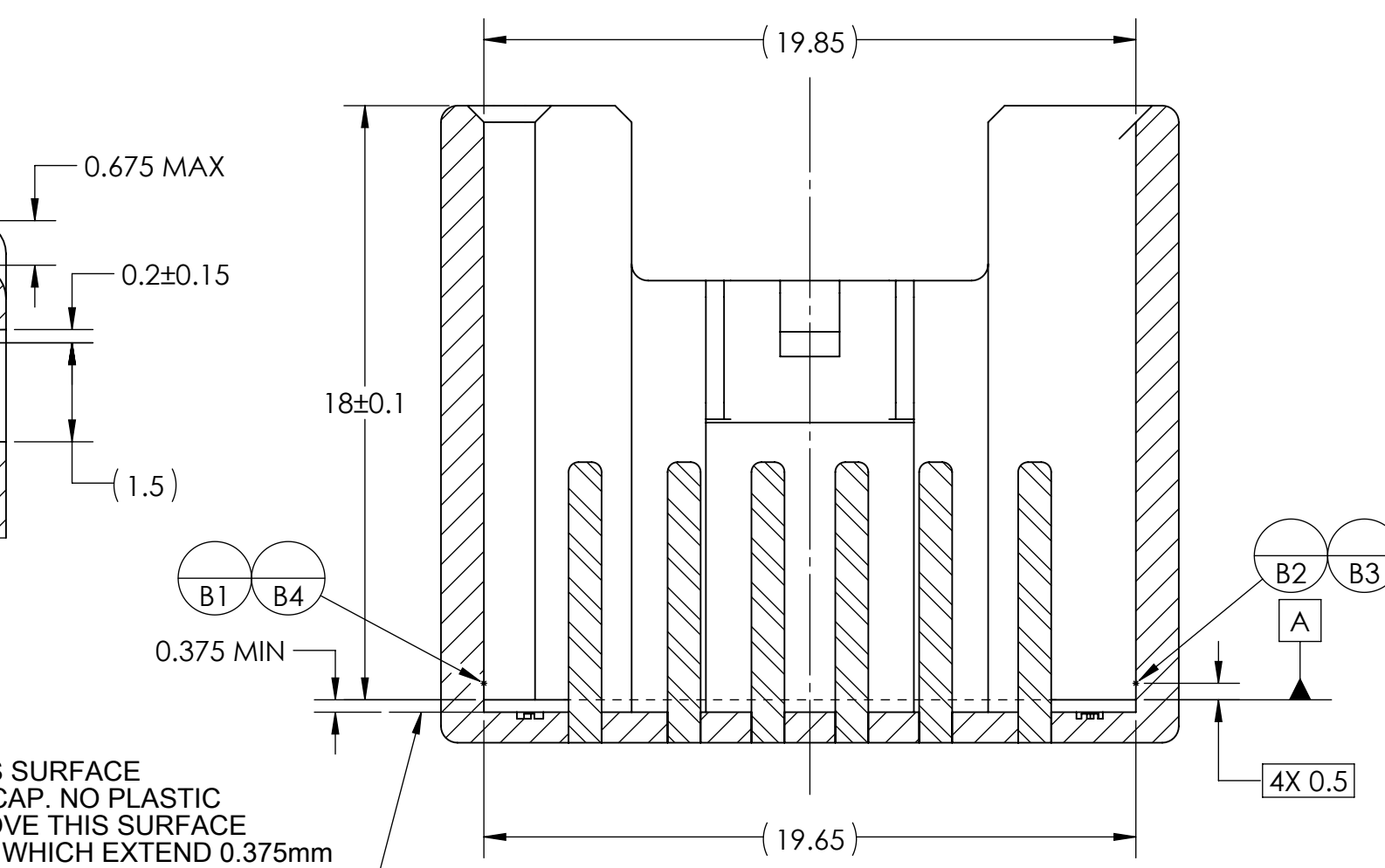
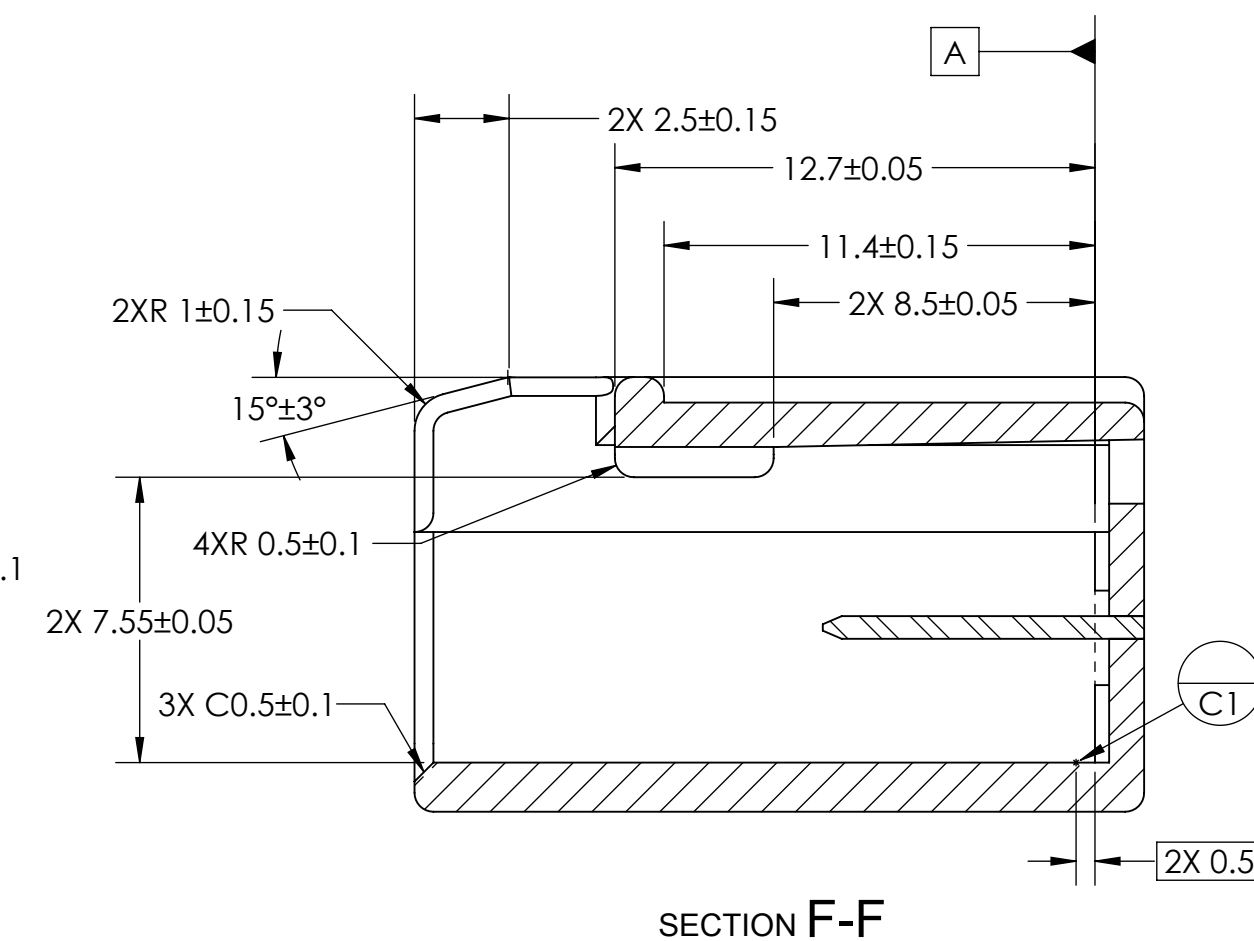
EWCAP expressly prohibits any party from changing either any EWCAP controlled portion of this drawing or any associated tooling before receiving approval, signed by the authorized representatives, of the USCAR member companies. Reference to the signed change notice must be entered in the drawing control column.



120-U-006-1-A01	A	BLACK
120-U-006-1-B01	B	LT. GRAY
120-U-006-1-C01	C	DK. GRAY
120-U-006-1-D01	D	BLACK
EWCAP PART NUMBER	POLARITY	MATING CONNECTOR COLOR

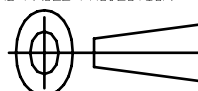
YAZAK
120-U-006-1-Z01

-	A	RELEASED	11-16-16	EC	JM
CHANGE SERIAL NUMBER	LET	REVISION RECORD	DATE	DWN	CHK
TOLERANCES (UNLESS OTHERWISE SPECIFIED)			<div>THIRD ANGLE PROJECTION</div> 		
DIMENSIONS ARE IN MILLIMETERS					
ANGLES ± 0° 30'					
USCAR-EWCAP					
SCALE	5:1	DRAWN BY E.CRESWELL	CHECKED BY J.MILLER	DATE	11-16-16
TITLE 6 WAY 1X6 UNSEALED INTERFACE 1.2mm CONNECTORS					
SHEET 1 of 2	DRAWING NUMBER 120-U-006-1-Z01		SIZE A2	DO NOT SCALE DRAWING COMPUTER AIDED DRAWING	REVISION LEVEL A



CONSTRUCTION BELOW THIS SURFACE
IS NOT CONTROLLED BY EWCAP. NO PLASTIC
FEATURES MAY EXTEND ABOVE THIS SURFACE
EXCEPT FOR DATUM A PADS WHICH EXTEND 0.375mm
ABOVE THIS SURFACE.

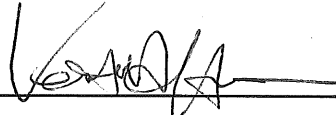
YAZAKI
120-U-006-1-Z01

TOLERANCES (UNLESS OTHERWISE SPECIFIED)				<div>THIRD ANGLE PROJECTION</div> 			
DIMENSIONS ARE IN MILLIMETERS							
ANGLES $\pm 0^{\circ} 30'$							
<div>USCAR-EWCAP</div>							
SCALE 5:1		DRAWN BY E.CRESWELL		CHECKED BY J.MILLER		DATE 11-16-16	
TITLE		6 WAY 1X6 UNSEALED INTERFACE 1.2mm CONNECTORS					
SHEET	DRAWING NUMBER			SIZE	DO NOT SCALE DRAWING		REVISION LEVEL
2 of 2	120-U-006-1-Z01			A2	COMPUTER AIDED DRAWING		A

**EWCAP Legal Notice
(Required on all EWCAP Drawings)
Revision 1-16-2015**

NOTICE

EWCAP has selected common dimensions for the connector(s) depicted and described herein (listed below). Further, EWCAP has selected for publication this drawing (and its companion electronic model) prepared by Yazaki North America, Inc. as representative of a connector having these dimensions. In exchange for the consideration of the selection of this drawing for publication (including posting on EWCAP's web site) and other good and valuable consideration flowing from this selection, Yazaki North America, Inc. hereby agrees on behalf of itself and its successors and assigns, with respect to any copyrights it may have in this drawing as well as any patent rights it may have in the connector illustrated in this drawing, not to enforce such copyrights and patents against any person or entity on account of their activities to make, have made, use and sell the connector illustrated in this drawing for vehicular applications. The term "connector" as used in this paragraph is limited solely to the structure specifically illustrated in this drawing.

Signed  for Yazaki North America, Inc. Date 11/16/16

Name and title of signer: Kent Hoffman – Vice President, Component Business Unit

The person signing this Agreement represents and warrants that (1) he or she is duly authorized and has legal capacity to execute and deliver this Agreement on behalf of Yazaki North America, Inc., (2) the execution and delivery of this Agreement and the performance of Yazaki North America, Inc. pursuant to the terms outlined above have been duly authorized and that this Agreement is a valid and legal agreement binding on Yazaki North America, Inc. and enforceable in accordance with its terms.

No warranties or indemnities of any kind are made or implied by Yazaki North America, Inc. or EWCAP. In particular there are no express or implied warranties of fitness for a particular purpose, merchantability, non-infringement or any other warranty of any kind. In addition, there are no express or implied warranties or indemnities of any kind relating to third party claims arising under the intellectual property laws of any country. Anyone using the information in this drawing does so at their own risk.

Applicable EWCAP Drawing Numbers:

120-U-006-1-Z01
