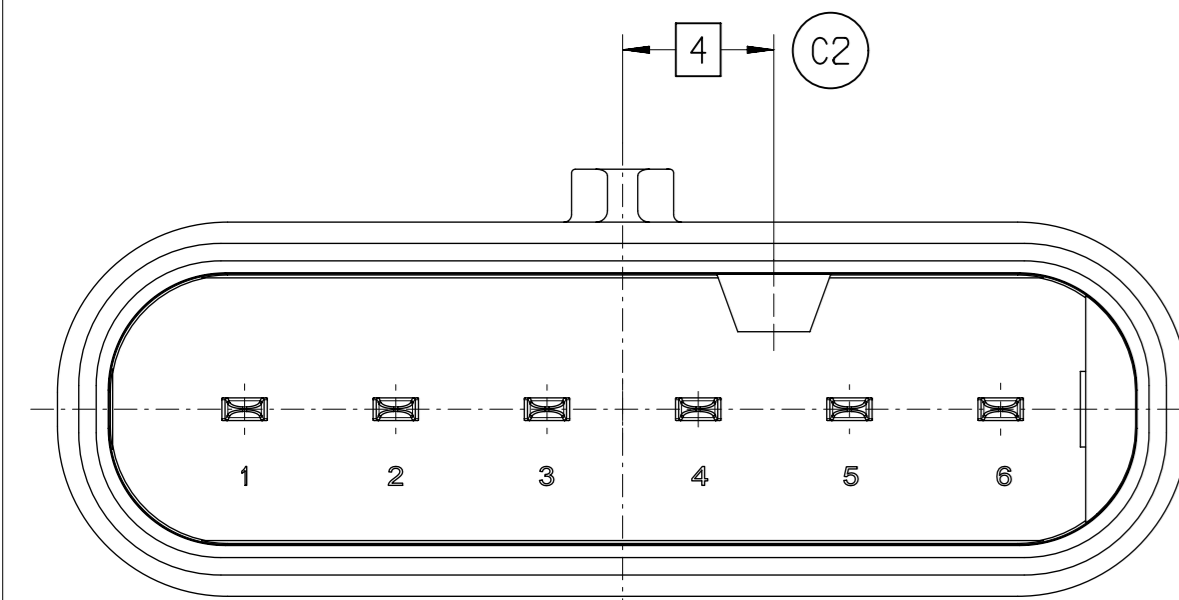
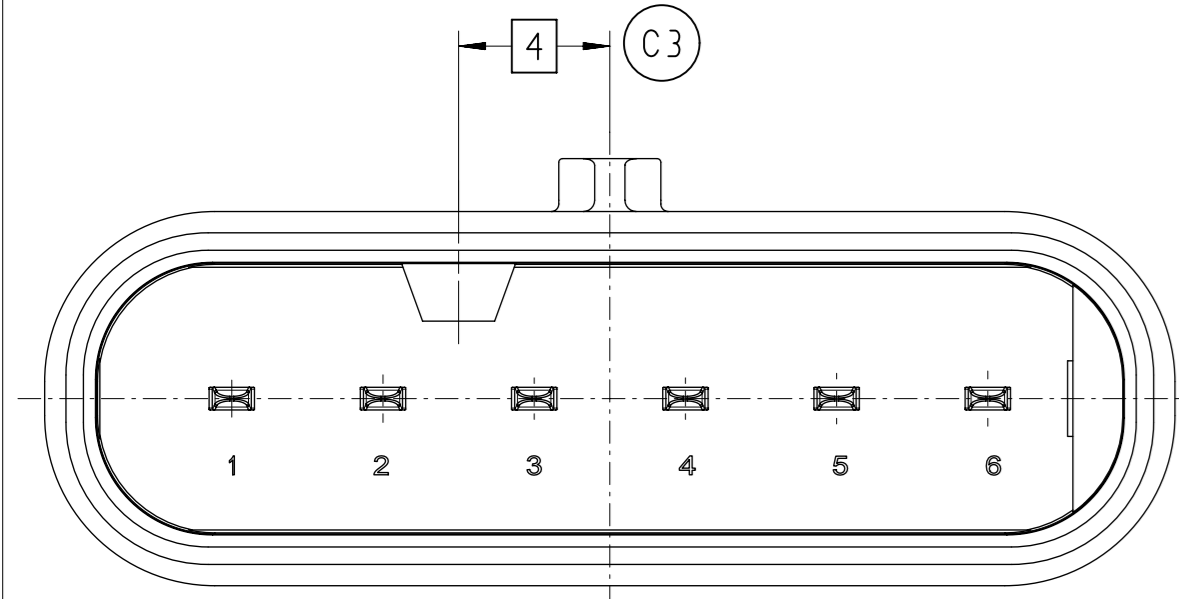


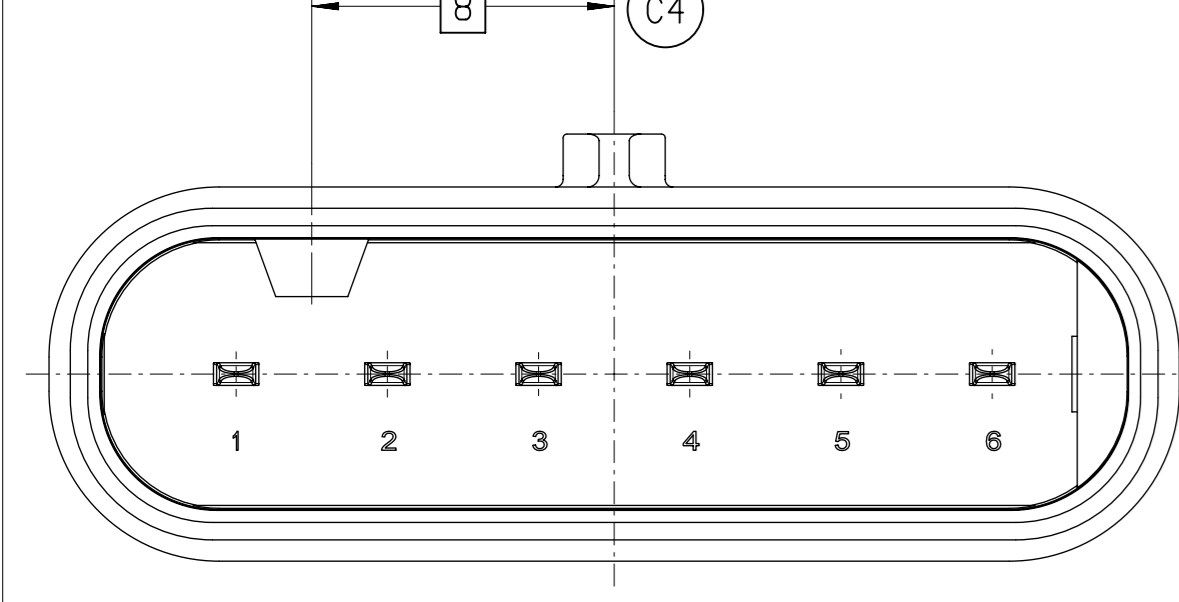
KEYING OPTION A



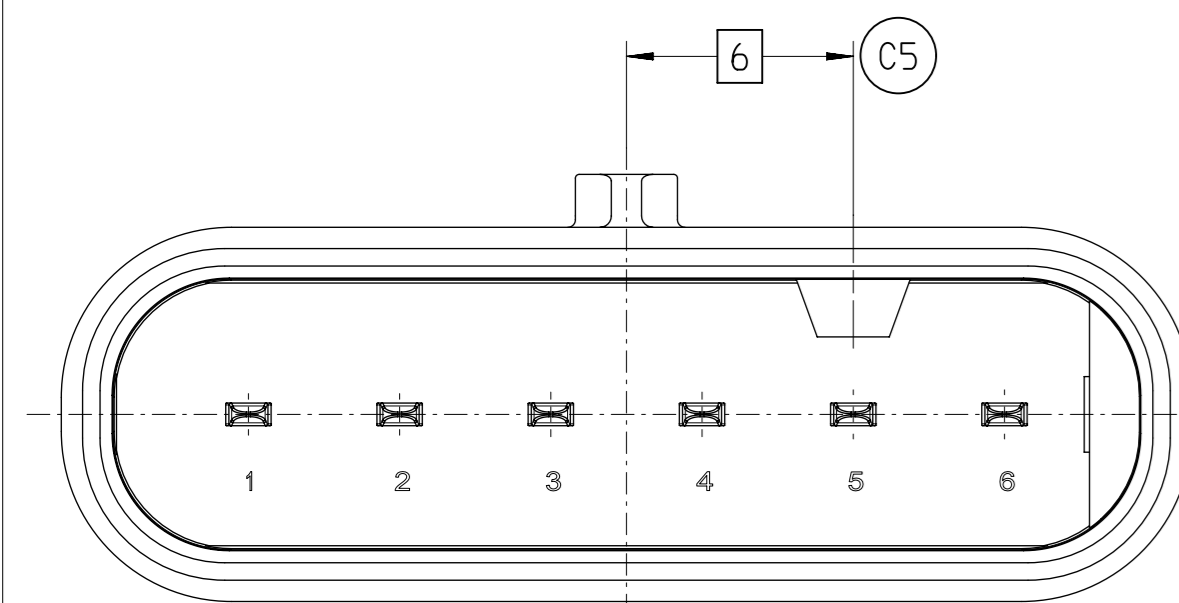
KEYING OPTION B



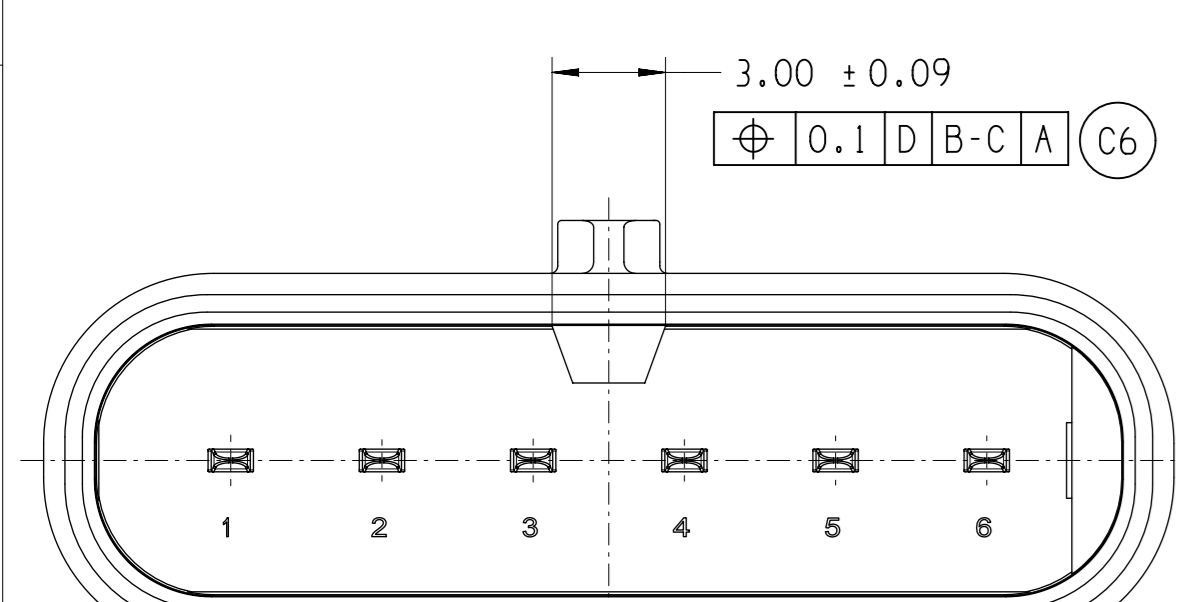
KEYING OPTION C



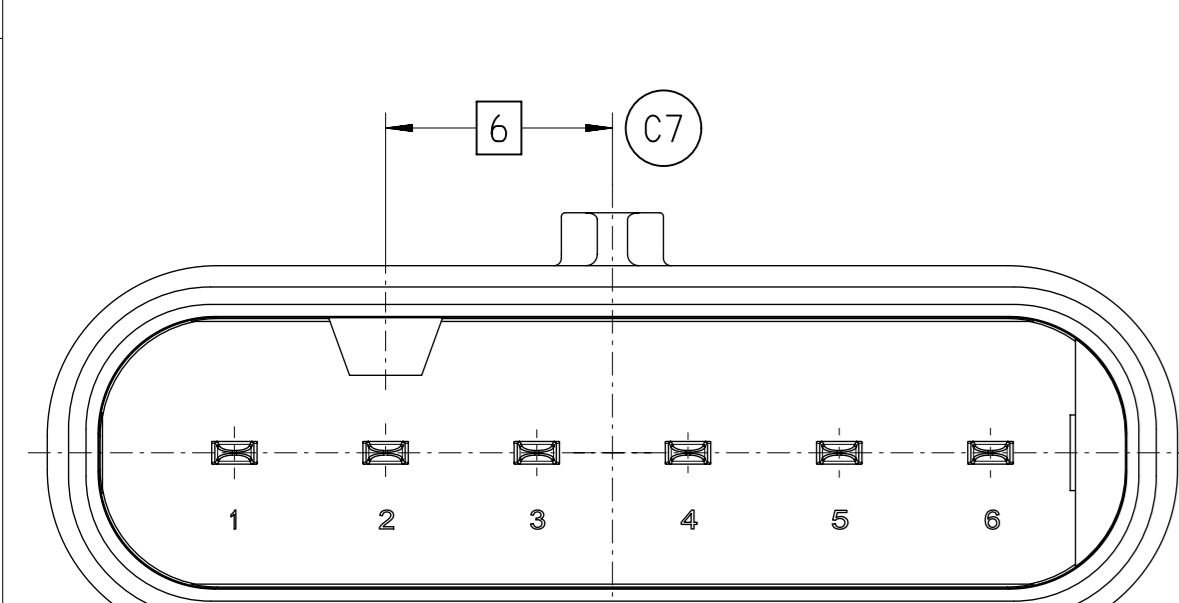
KEYING OPTION D



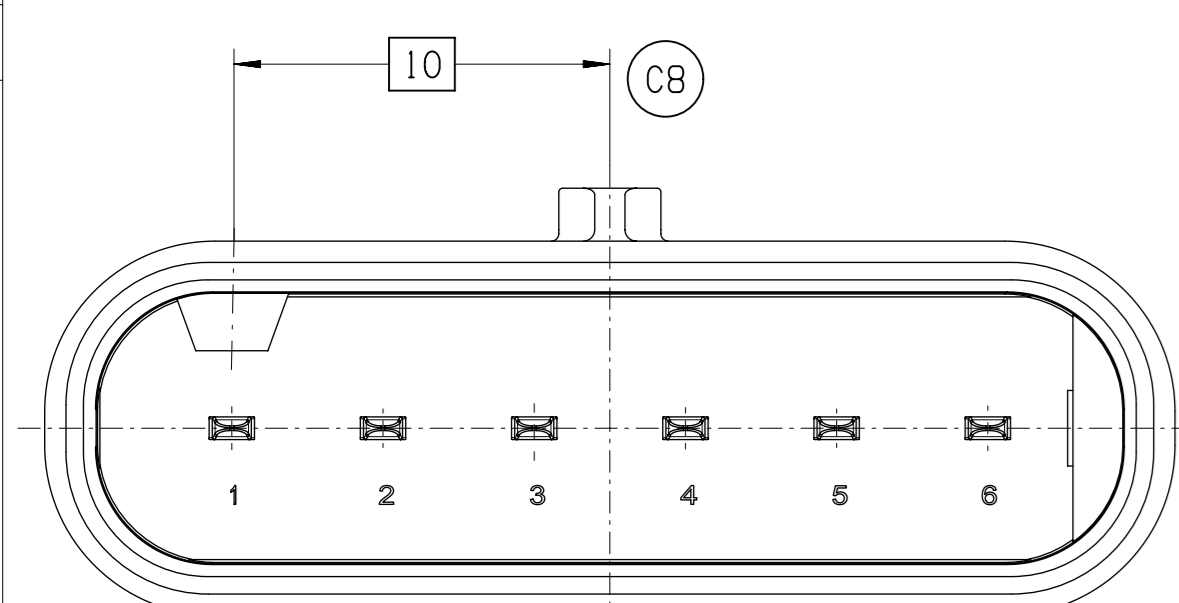
KEYING OPTION E



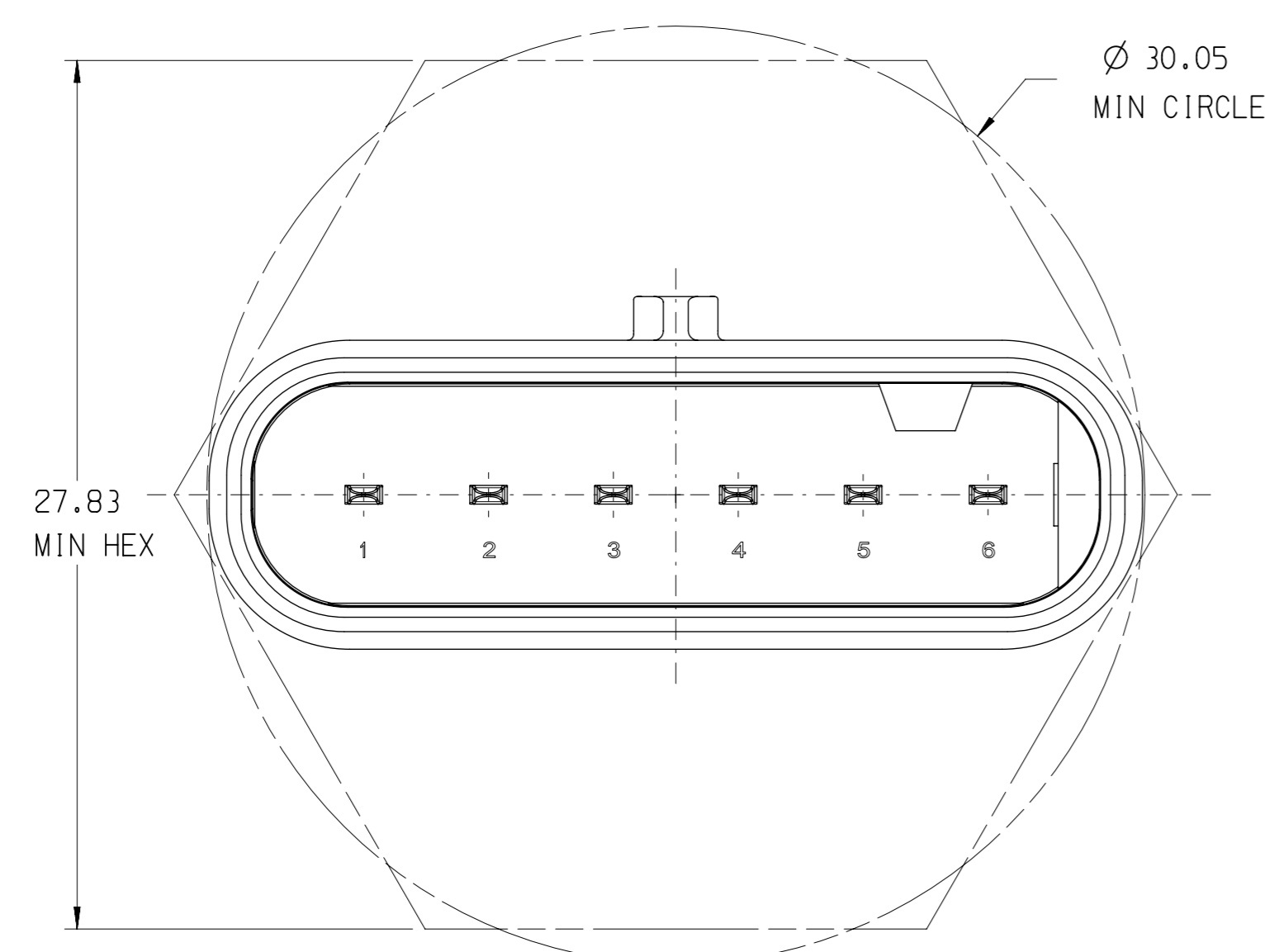
KEYING OPTION F



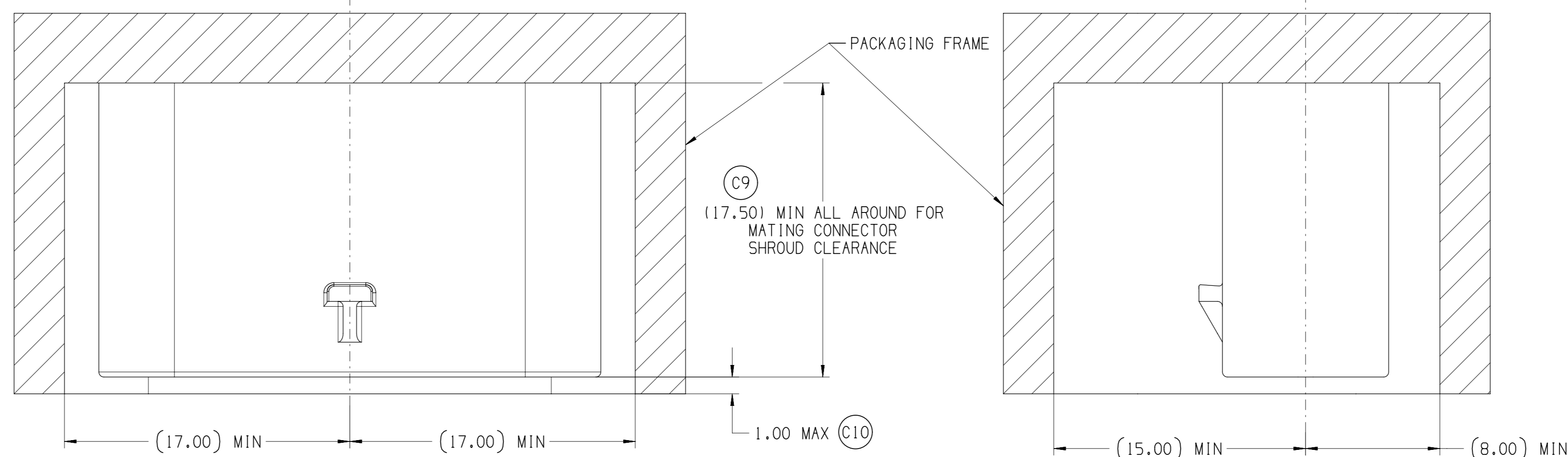
KEYING OPTION G



KEYING OPTION H
POLARIZATION VIEWS

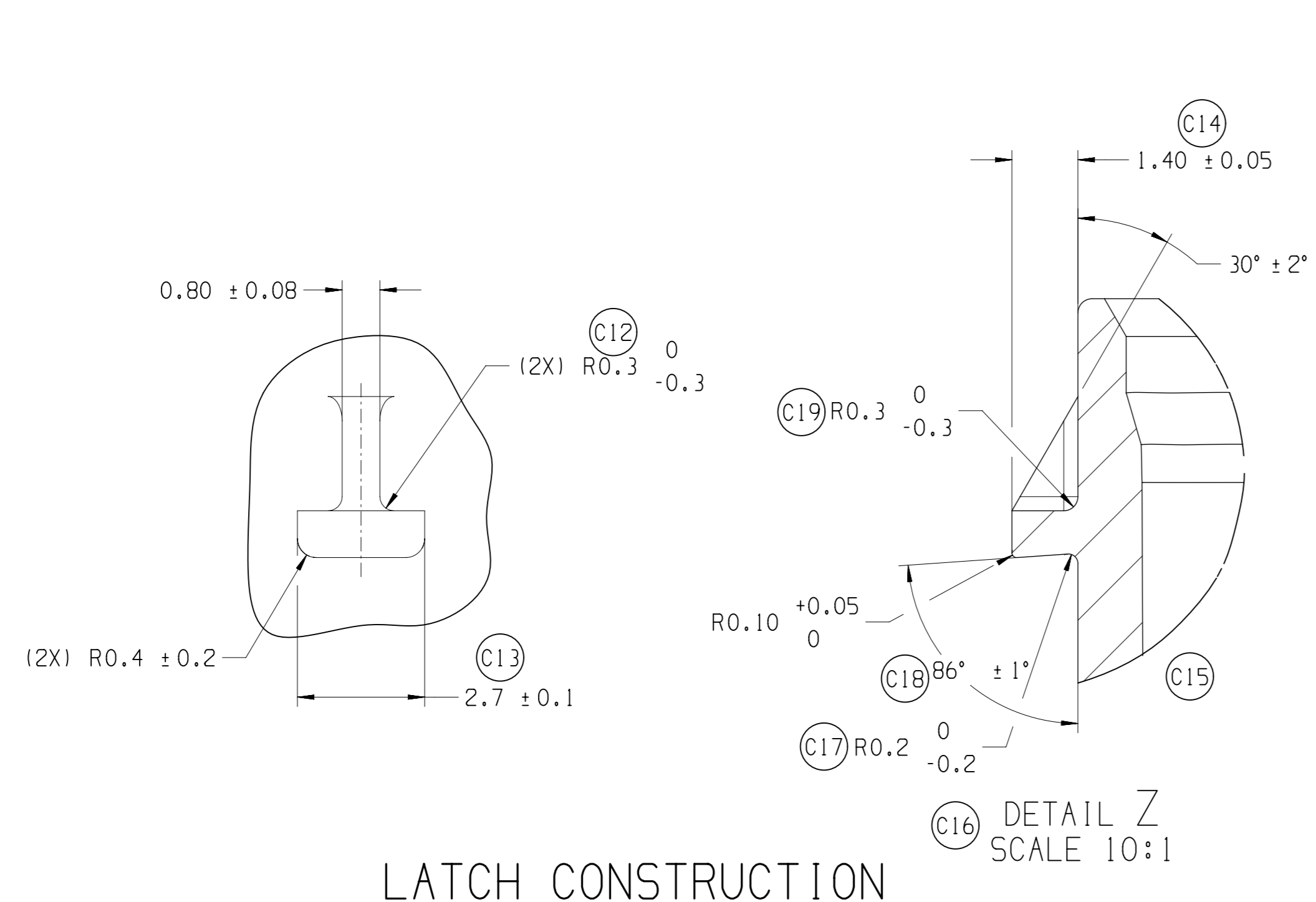


MINIMUM FIT SIZE - PROVIDED FOR INFORMATIONAL PURPOSES ONLY (BASED ON MAXIMUM MATERIAL CONDITION)

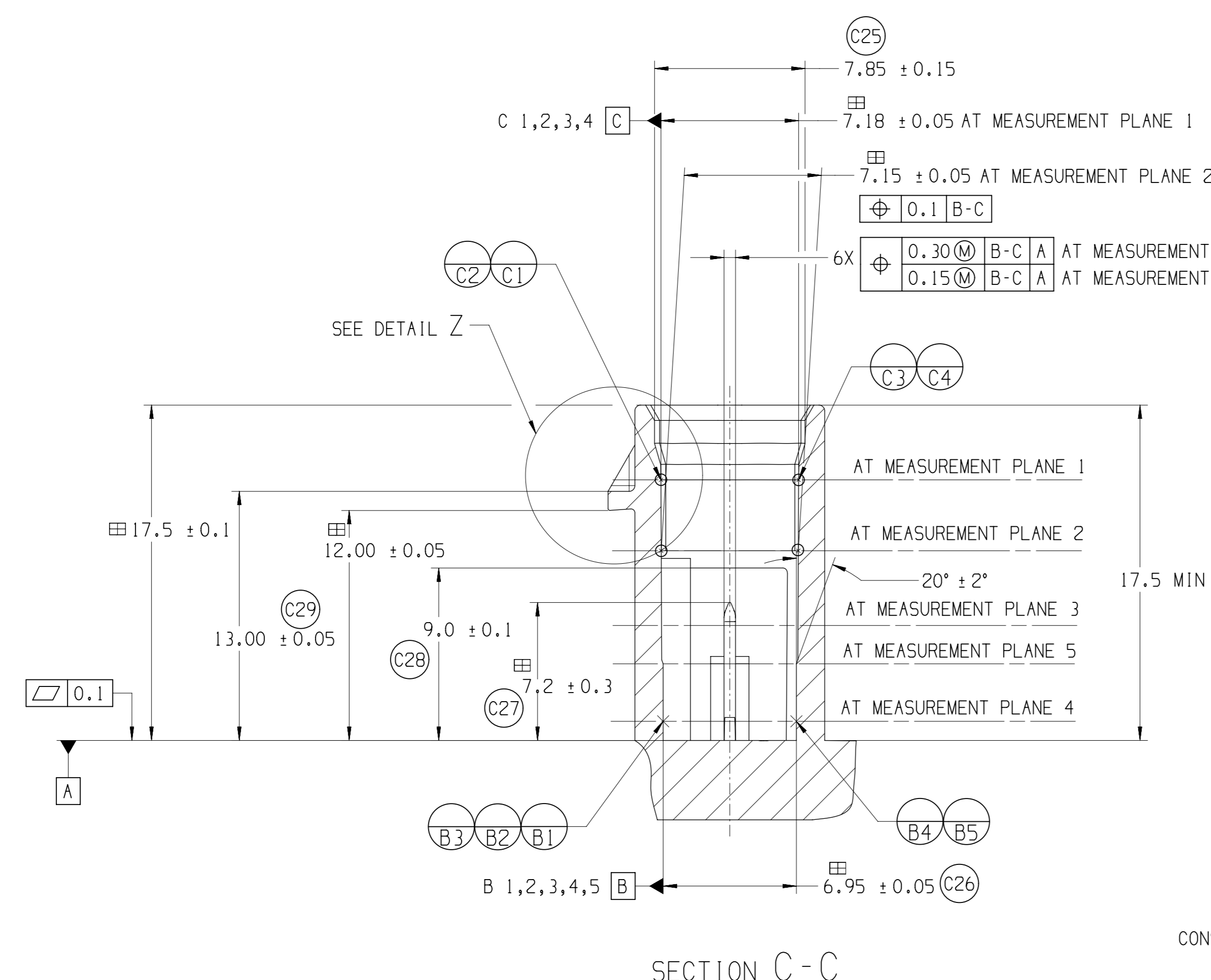


IF THE HEADER IS RECESSED INTO A POCKET, THESE DIMENSIONS REPRESENT THE MINIMUM CLEARANCE REQUIRED FOR THE MATING CONNECTOR SHROUD

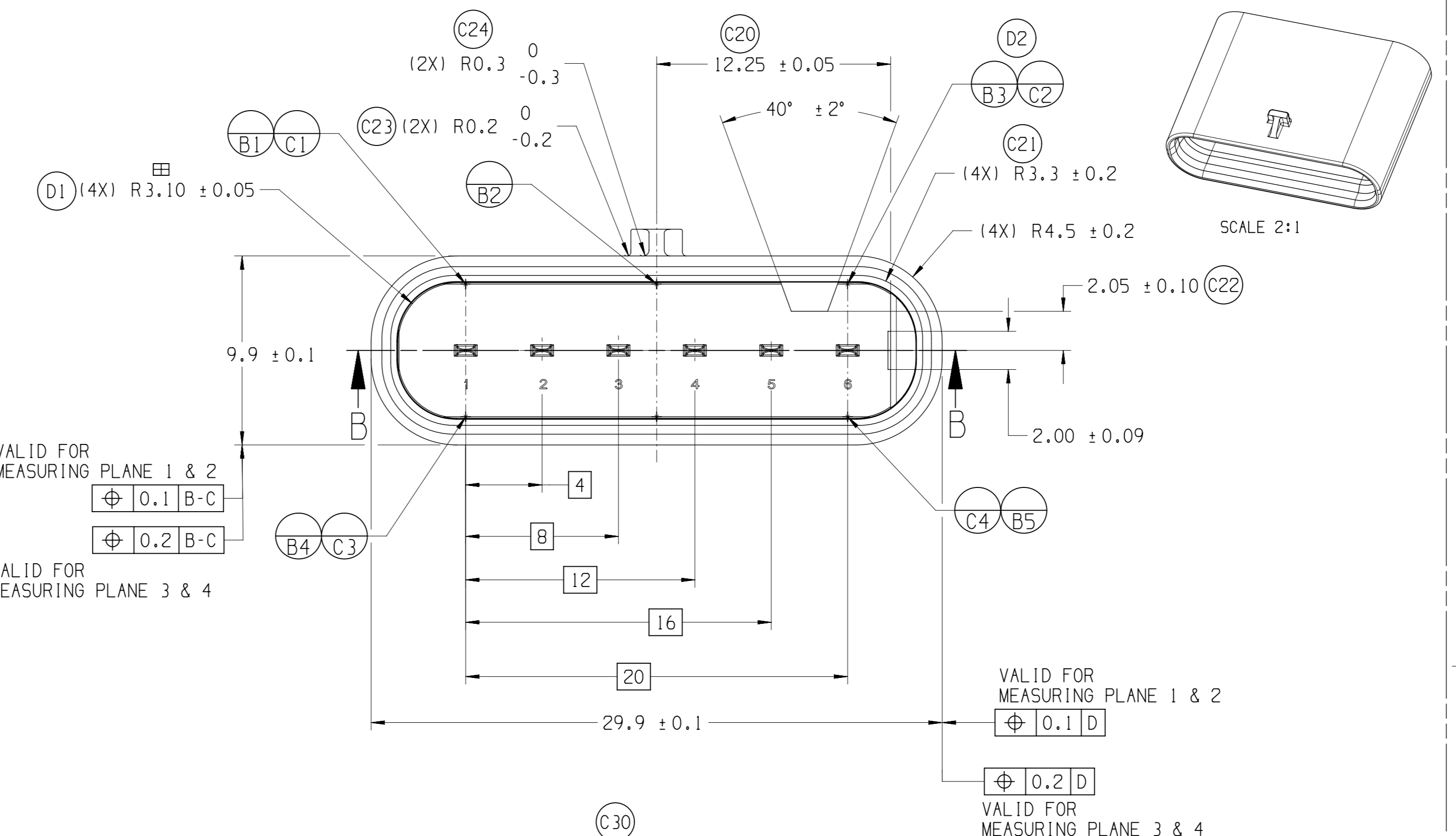
(C1) NOTICE
THIS DRAWING OR PORTIONS OF IT ARE CONTROLLED BY THE ELECTRICAL WIRING COMPONENTS APPLICATION PARTNERSHIP (EWCAP) A SUBGROUP OF THE UNITED STATES COUNSEL FOR AUTOMOTIVE RESEARCH LLC (USCAR LLC).
USCAR IS AN LLC CONSISTING OF MEMBERS FROM CHRYSLER GROUP, FORD MOTOR COMPANY AND GM COMPANY.
ANY CHANGE TO A EWCAP CONTROLLED PORTION OF THIS DRAWING, INCLUDING A REVISION RECORD CHANGE MUST BE APPROVED, IN WRITING, BY THE RESPONSIBLE EWCAP REPRESENTATIVE FROM EACH USCAR MEMBER COMPANY. EACH EWCAP REPRESENTATIVE AUTHORIZED TO SIGN FOR HIS OR HER MEMBER COMPANY IS RESPONSIBLE FOR OBTAINING ALL NECESSARY APPROVALS WITHIN THAT COMPANY PRIOR TO SIGNING FOR THE APPROVAL OF THE CHANGE.
EWCAP EXPRESSLY PROHIBITS ANY PARTY FROM CHANGING EITHER ANY EWCAP CONTROLLED PORTION OF THIS DRAWING OR ANY ASSOCIATED TOOLING BEFORE RECEIVING APPROVAL, SIGNED BY THE AUTHORIZED REPRESENTATIVES, OF THE USCAR MEMBER COMPANIES. REFERENCE TO THE SIGNED CHANGE NOTICE MUST BE ENTERED IN THE DRAWING CONTROL COLUMN.



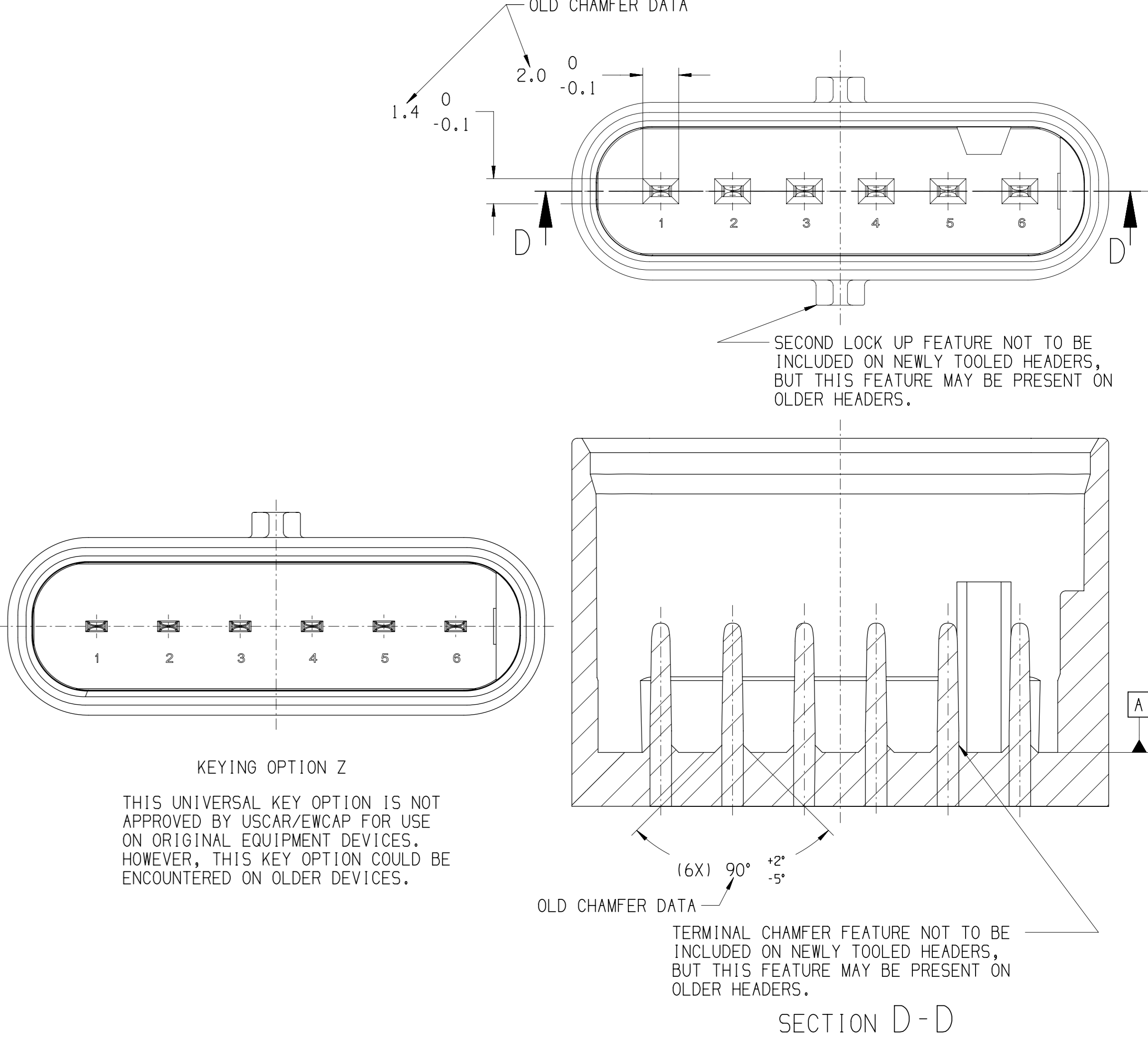
LATCH CONSTRUCTION
SCALE 10:1



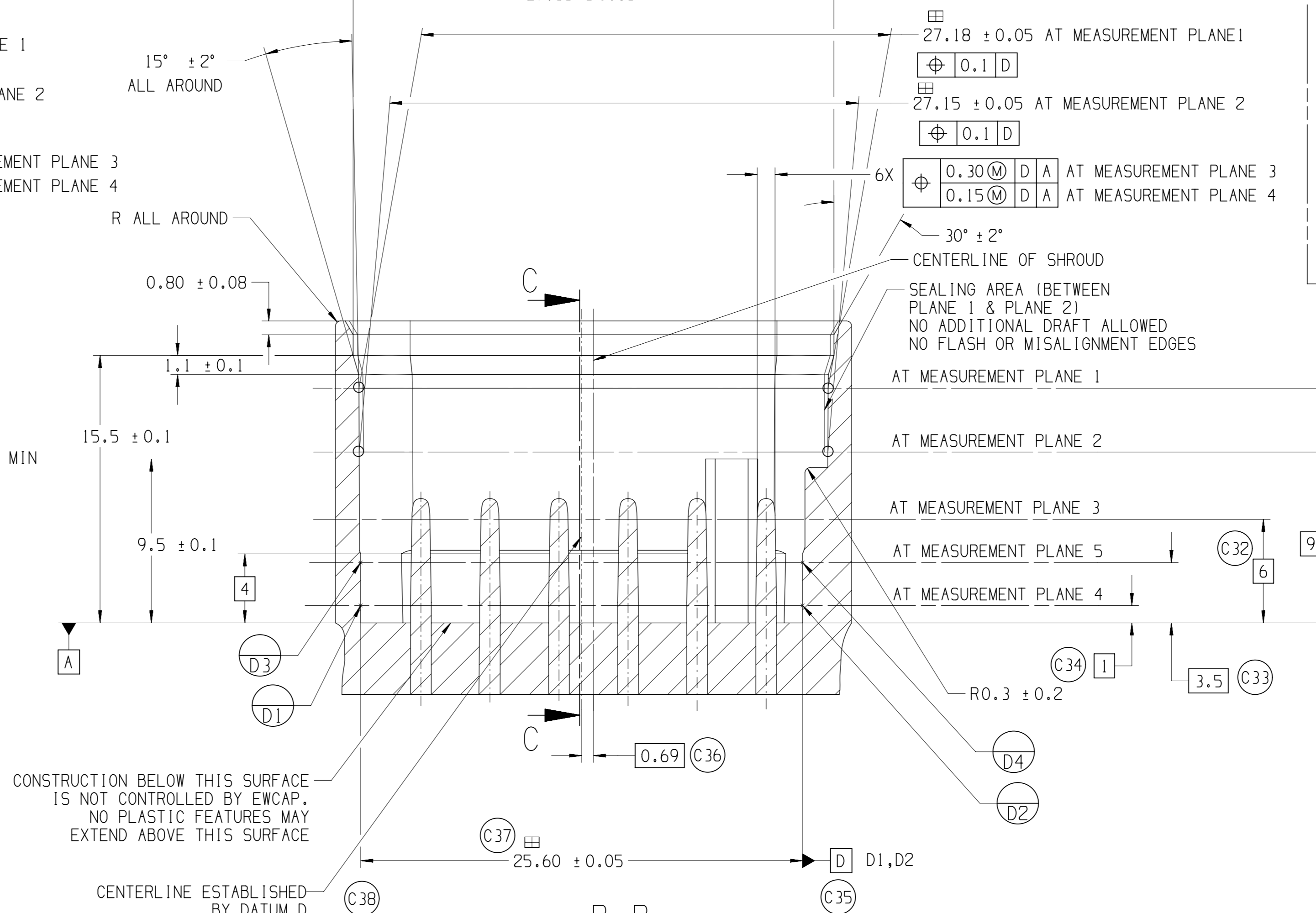
SECTION C-C



SECTION B-B



KEYING OPTION Z
THIS UNIVERSAL KEY OPTION IS NOT APPROVED BY USCAR/EWCAP FOR USE ON ORIGINAL EQUIPMENT DEVICES. HOWEVER, THIS KEY OPTION COULD BE ENCOUNTERED ON OLDER DEVICES.



- (C39) NOTES:**
- ALL DIMENSIONS SHOWN IN MILLIMETERS.
 - DIMENSIONING AND TOLERANCING PER ASME Y14.5M
 - 0.25 RADIUS ON ALL CORNERS SHOWN SHARP.
 - ALL UNSPECIFIED RADIUS 0.25.
 - REFER TO "SAE/USCAR 12 CONNECTOR DESIGN CRITERIA" FOR ADDITIONAL REQUIREMENTS.
 - EXCEPT WHERE NOTED, DRAFT ON OUTSIDE SURFACES IS PERMISSIBLE WITHIN TOLERANCE.
 - SYMBOL INDICATES DRAFT DIRECTION.
 - FOR TERMINAL MATERIAL, DIMENSIONAL AND COATING REQUIREMENTS, SEE EWCAP 001 BLADE DRAWING.
 - TO CLAIM USCAR COMPLIANCE, PARTS DESIGNED AND PRODUCED TO THIS FOOTPRINT DRAWING MUST BE TESTED TO AND MEET THE REQUIREMENTS OF SAE/USCAR 2.
 - REVERSE DRAFT PERMISSIBLE IN LATCH DETAILS.
 - ⊞ DENOTES DIMENSION THAT MAY BE UTILIZED TO MONITOR PART QUALITY.
 - A FULL SHROUD ON THE MATING CONNECTOR IS REQUIRED TO INSURE THE CONNECTOR-HEADER POLARIZATION FEATURES (OPTIONS A THRU F) WILL FUNCTION. THE FULL SHROUD ALSO PREVENTS SCOOP DAMAGE TO THE HEADER PINS.
 - THIS PART HAS BEEN PREVIOUSLY DESIGNED AND TOOLED WITH THE DATUM REFERENCES AS SHOWN. THE DATUM REFERENCES USED ON THIS DRAWING TAKES PRECEDENCE OVER THE EWCAP DRAWING GUIDELINE DATUM REFERENCE REQUIREMENT.

REV	DESCRIPTION	DATE	BY	CHK
155	D D1 WAS 14X R3.10 ± 0.05 R 15 VALID FROM 0-4 MM SEE SECTION B-B D2 ADDED MISSING DATUM TARGET POINTS B3, C2 C1 WAS 8.00 ± 0.05 C2 WAS 4.00 ± 0.05 C3 WAS 4.00 ± 0.05 C4 WAS 8.00 ± 0.05 C5 WAS 6.00 ± 0.05 C6 ADDED [0.1] D [B-C] A C7 WAS 6.00 ± 0.05 C8 WAS 10.00 ± 0.05 C9 ADDED 1.00 MAX C10 ADDED 1.00 MAX C11 REVISED DISCLAIMER NOTICE C12 ADDED 12X R0.3 0/-0.3 C13 WAS 2.8 0/-0.2 C14 WAS 1.45 0/-0.1 C15 REMOVED TEST DEVICE Ø 1.50 ± 0.01 C16 REVISED DETAIL NAME C17 ADDED R0.2 0/-0.2 C18 WAS 87 0/-2 C19 ADDED R0.3 0/-0.3 C20 WAS 12.2 ± 0.10 C21 WAS 14X R3.3 ± 0.2 C22 WAS 1.95 ± 0.20/0 C23 ADDED 12X R0.2 0/-0.2 C24 ADDED 12X R0.3 0/-0.3 C25 WAS 7.7 ± 0.3/0 [0.2] B C26 WAS 6.9 ± 0.1/0 [0.1] B C27 WAS 7.0 ± 0.1 C28 REMOVED 10.5 ± 0.1/0 C29 WAS 111.95 C30 WAS 27.7 ± 0.3/0 [0.2] C C31 WAS 13.55 C32 WAS 1 C33 ADDED 3.5 C34 ADDED 1 C35 REMOVED 2.1 C36 ADDED 0.69 C37 ADDED 25.60 ± 0.05 C38 REMOVED 23.45 ± 0.05/0 C39 REVISED NOTES	05-10-19	SR	CJ
098	C ADDED KEYING OPTIONS E, F, G & H AND ADDED NOTE FOR CONSTRUCTION BELOW DATUM A	01-03-14	SR	MM

REV	DESCRIPTION	DATE	BY	CHK
082	B ADDED KEYING OPTIONS E, F, G & H AND ADDED NOTE FOR CONSTRUCTION BELOW DATUM A	05-18-10	SR	FAH
-	A RELEASED	01-08-09	SR	FAH
CHANGE SERIAL NUMBER	LET	REVISION RECORD	DATE	DWN
LET	REVISION RECORD	DATE	DWN	CHK

TOLERANCES UNLESS OTHERWISE SPECIFIED:
DIMENSIONS ARE IN MILLIMETERS
ANGLES ± 2°
X.X ± 0.25 X.XX ± 0.10

EWCAP

SCALE: 5:1 DRAWN BY: RANGARAJAN CHECKED BY: FRANK HOLUB DATE: 11-19-2008

TITLE: DIRECT CONNECT INTERFACE 6 WAY (1 X 5) 1.2MM SCALED MALE

SHEET DRAWING NUMBER: 120-5-006-1-202 SIZE: DO NOT SCALE DRAWING REVISION LEVEL: E COMPUTER AIDED DRAWING: D

APTIV
PC10609203