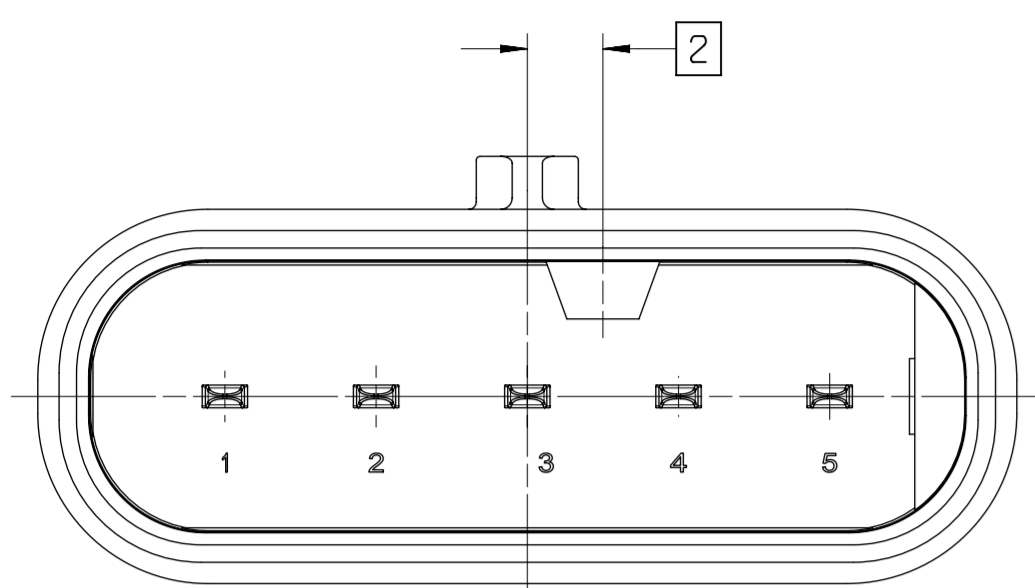
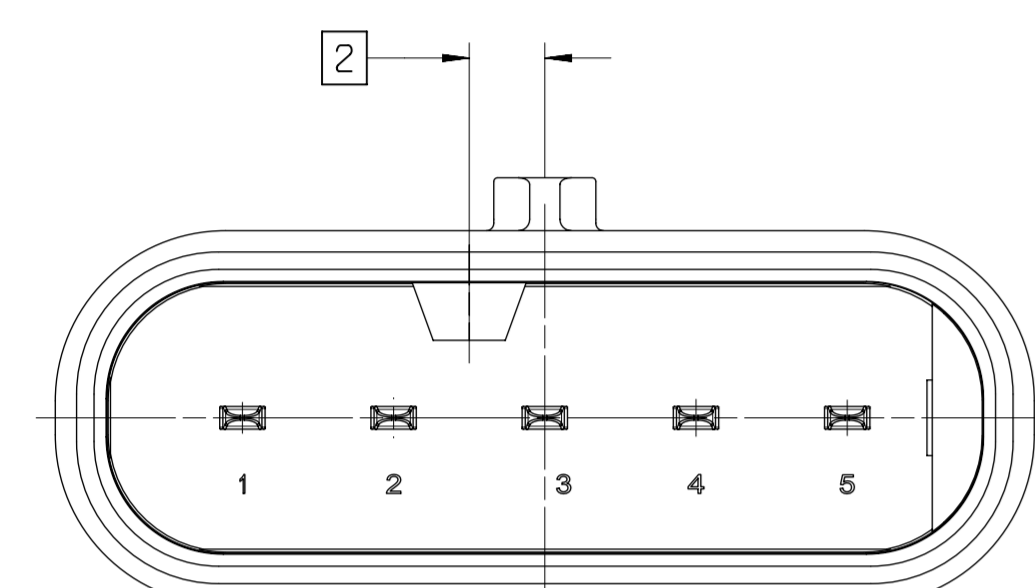


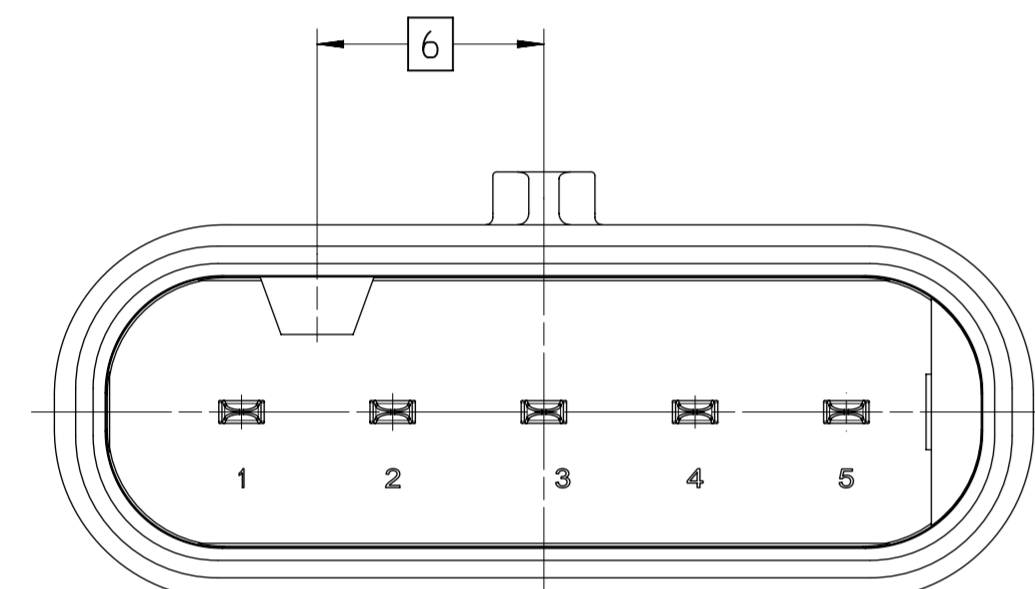
KEYING OPTION A



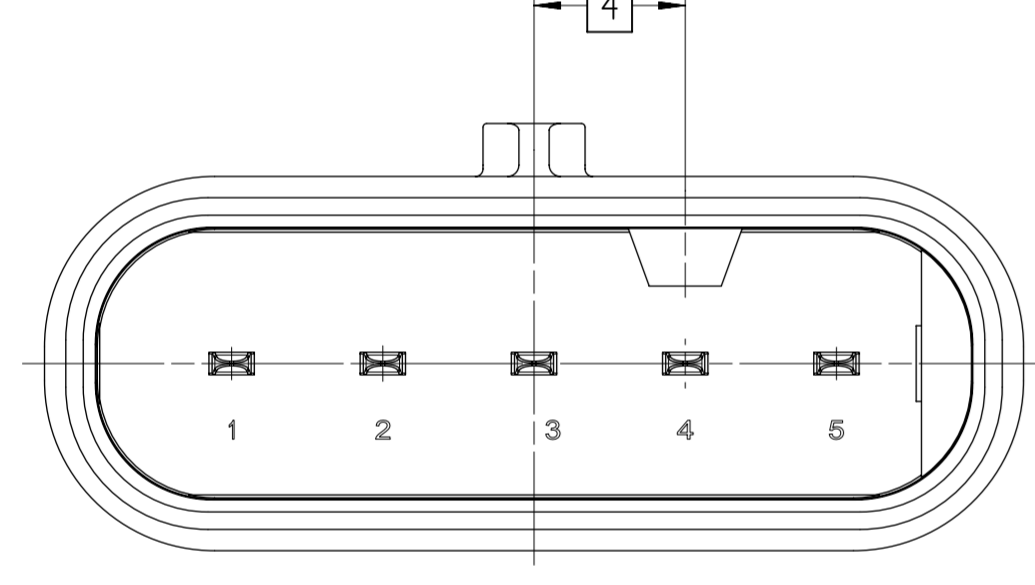
KEYING OPTION B



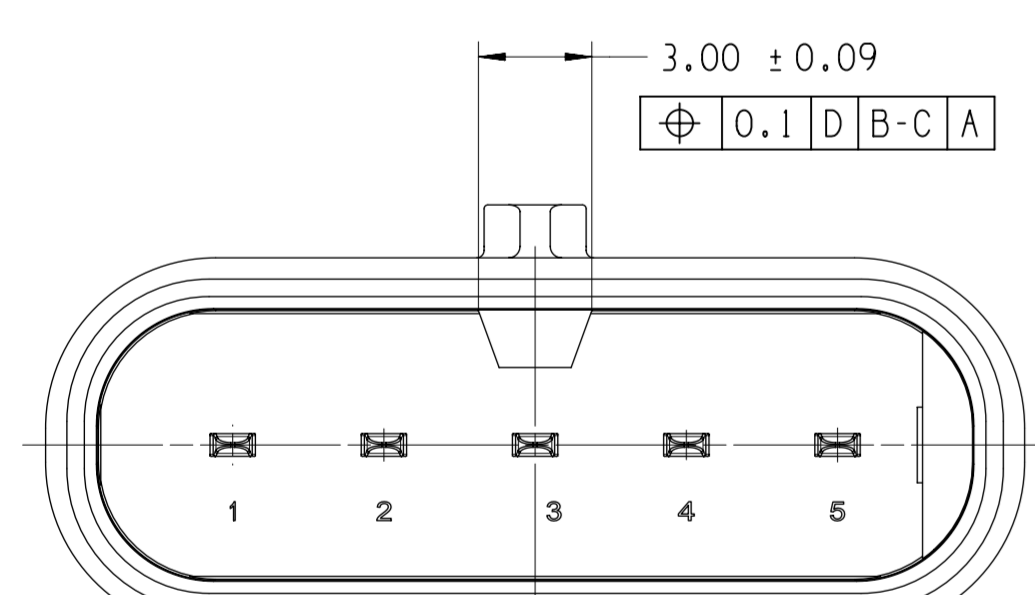
KEYING OPTION C



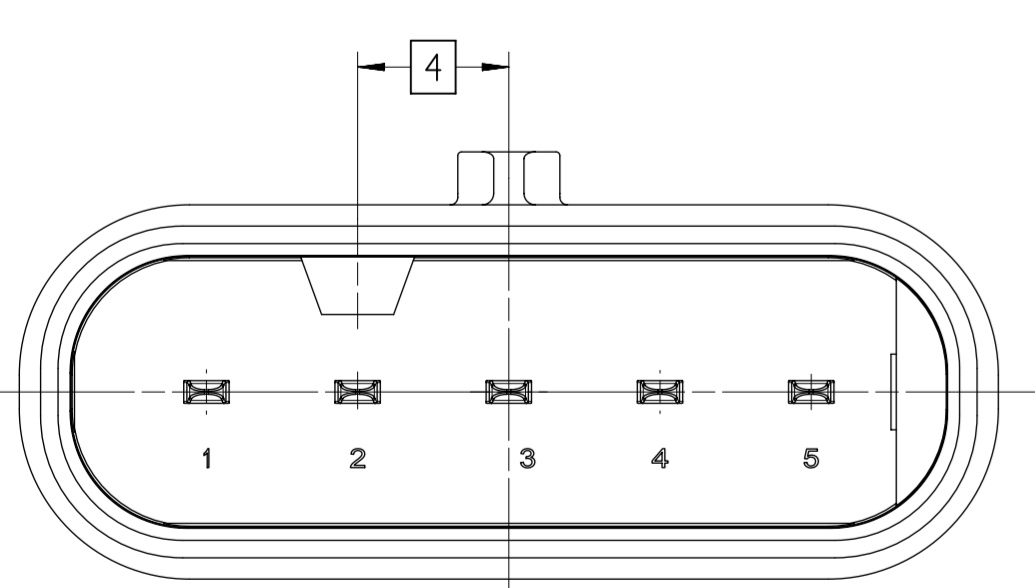
KEYING OPTION D



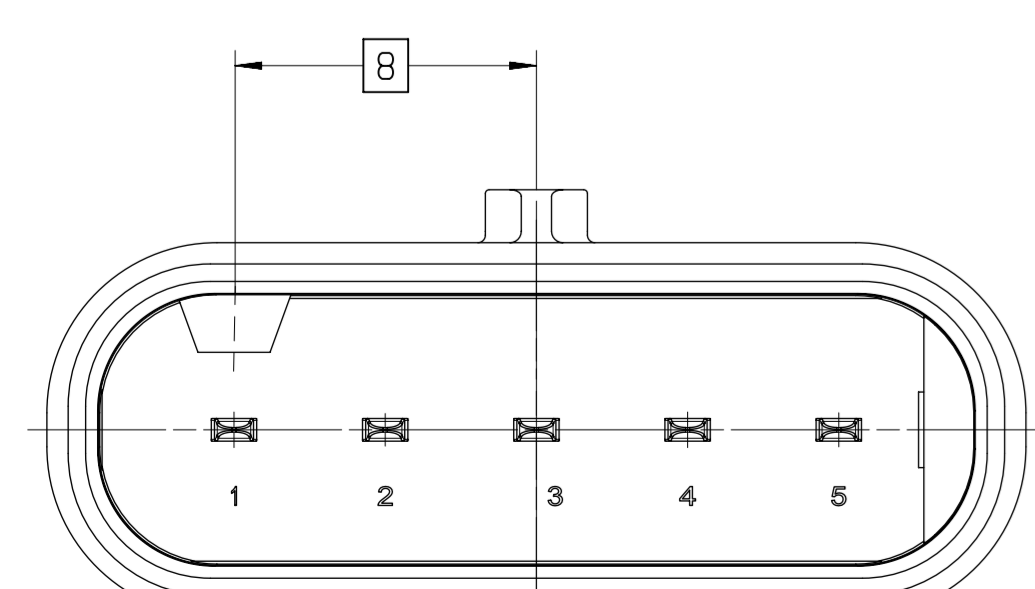
KEYING OPTION E



KEYING OPTION F

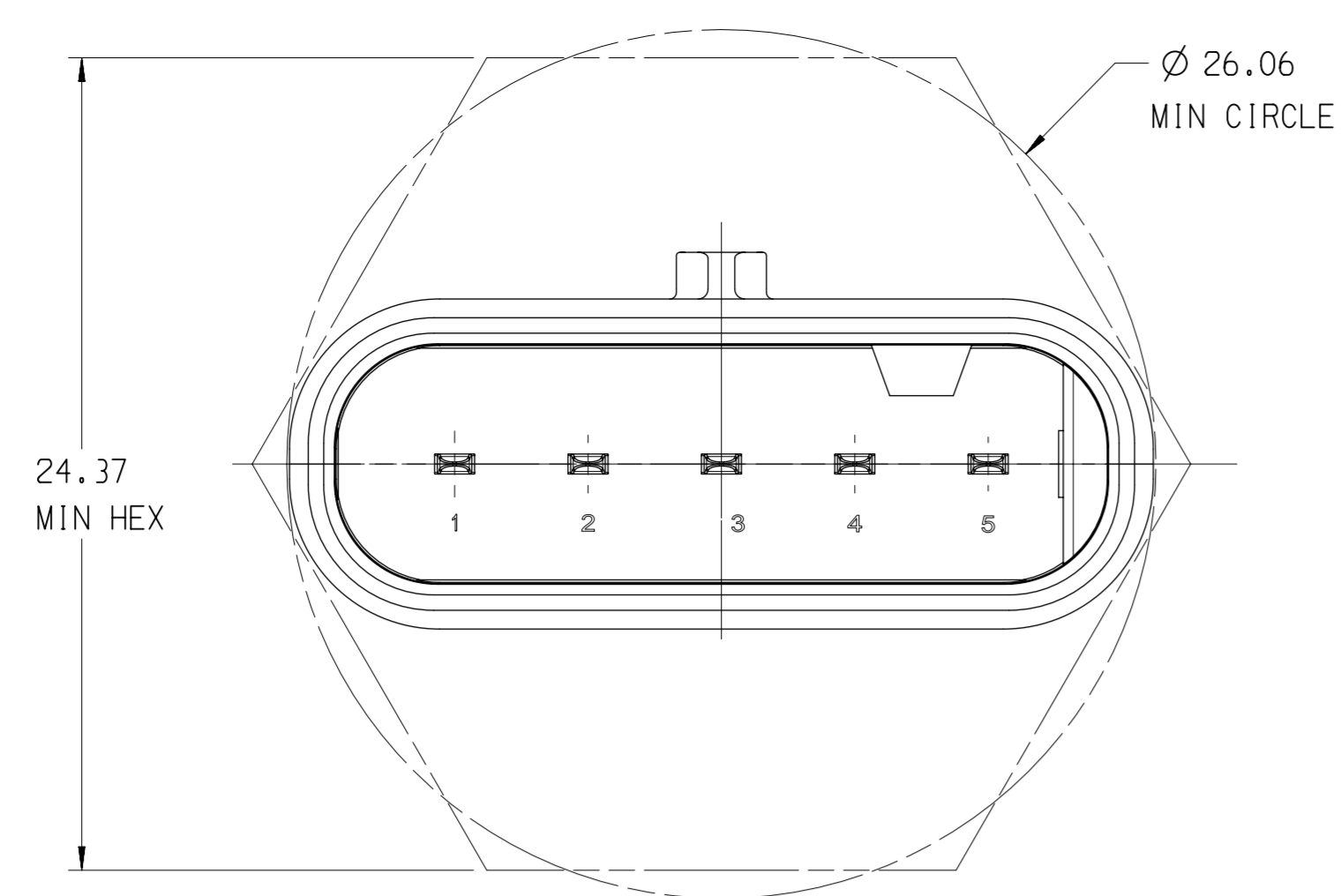


KEYING OPTION G

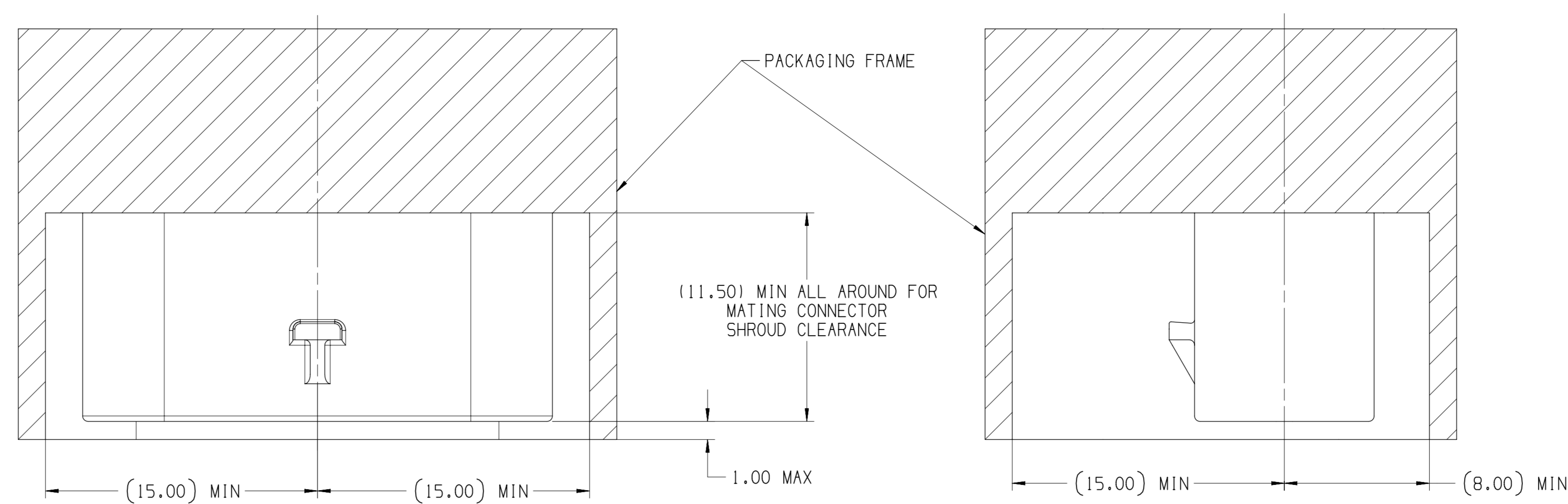


KEYING OPTION H

POLARIZATION VIEWS



MINIMUM FIT SIZE - PROVIDED FOR INFORMATIONAL PURPOSES ONLY (BASED ON MAXIMUM MATERIAL CONDITION 1)



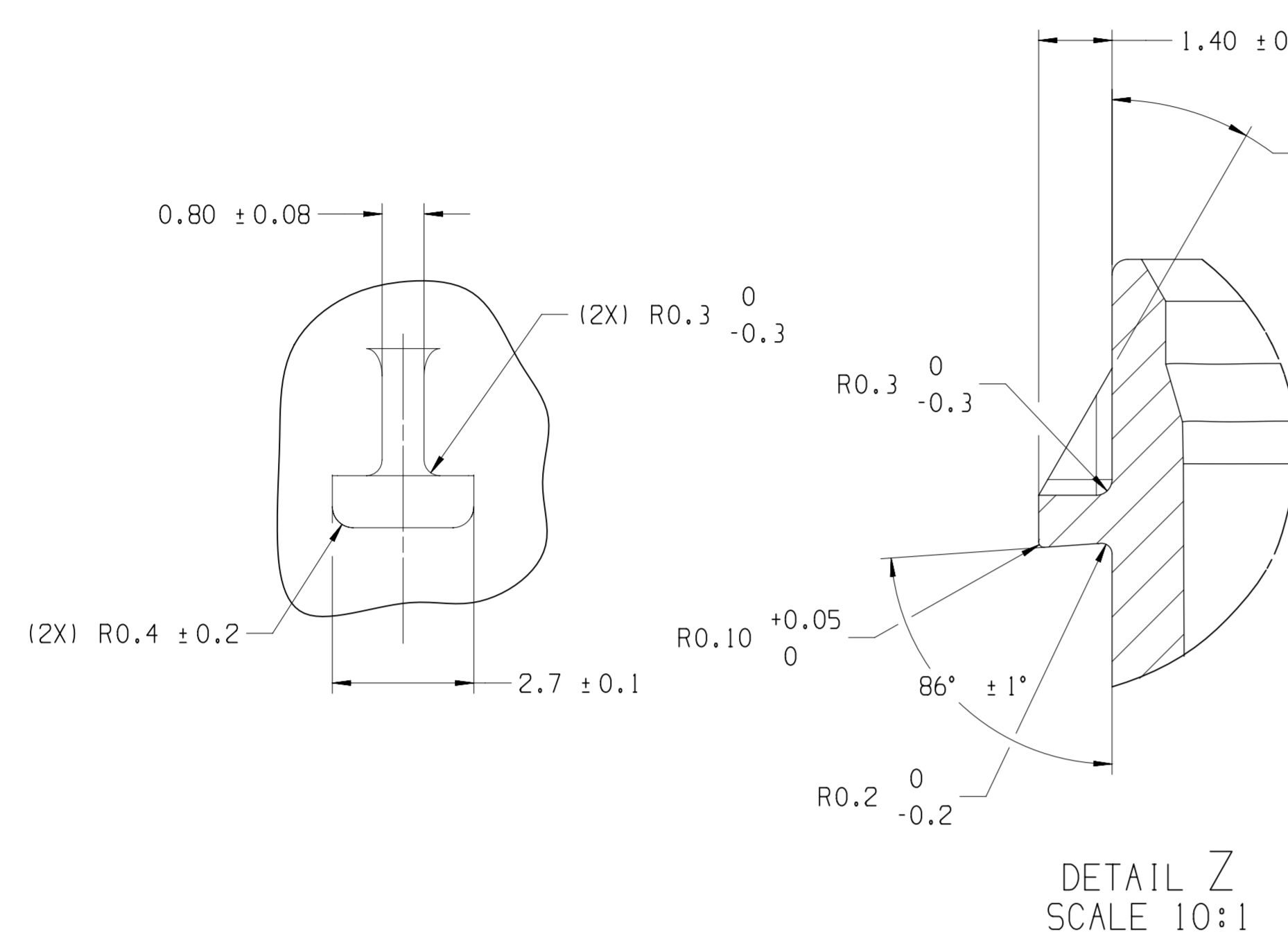
IF THE HEADER IS RECESSED INTO A POCKET, THESE DIMENSIONS REPRESENT THE MINIMUM CLEARANCE REQUIRED FOR THE MATING CONNECTOR SHROUD

NOTICE
THIS DRAWING OR PORTIONS OF IT ARE CONTROLLED BY THE ELECTRICAL WIRING COMPONENTS APPLICATION PARTNERSHIP (EWCAP) A SUBGROUP OF THE UNITED STATES COUNSEL FOR AUTOMOTIVE RESEARCH LLC (USCAR LLC).

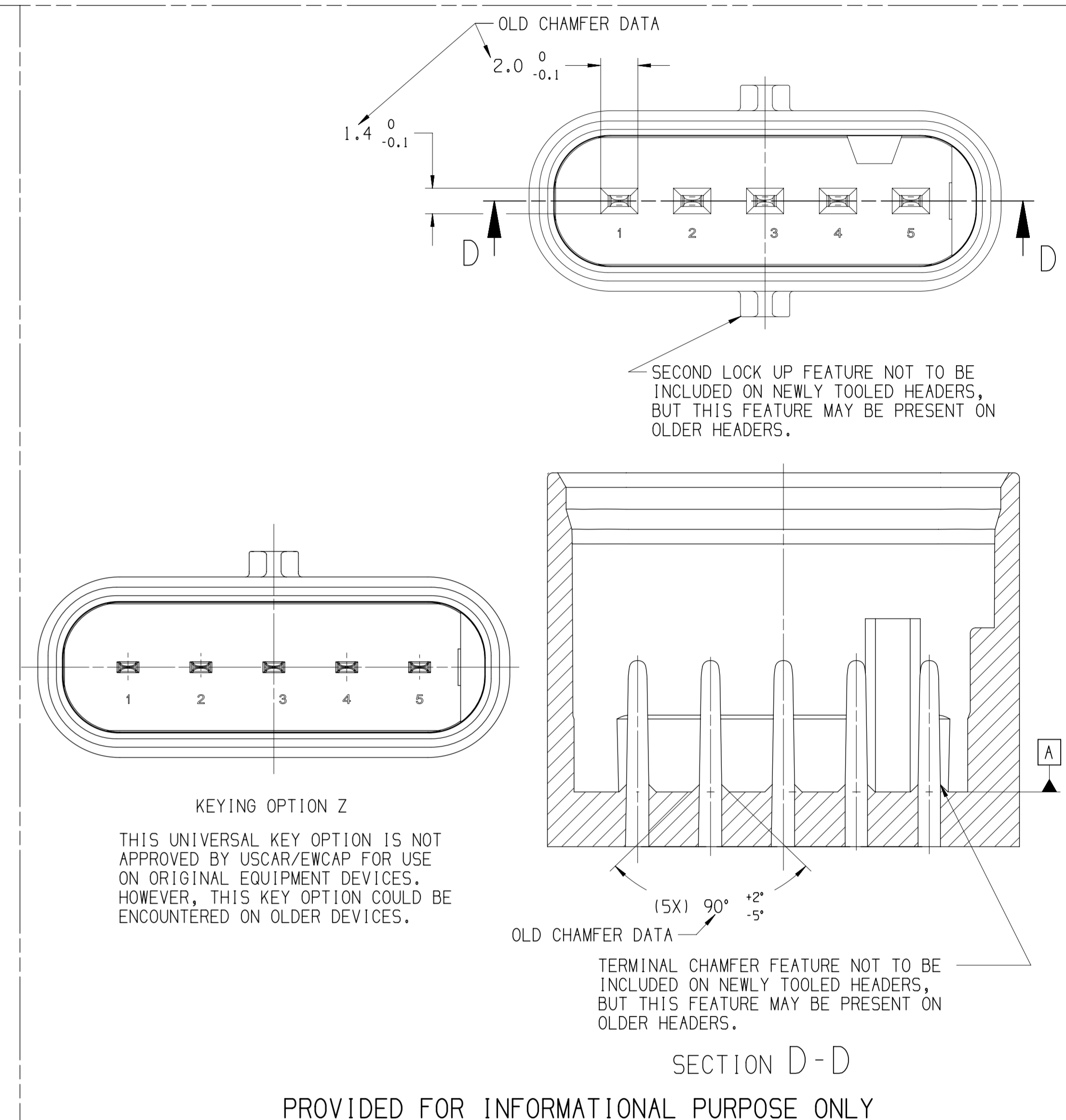
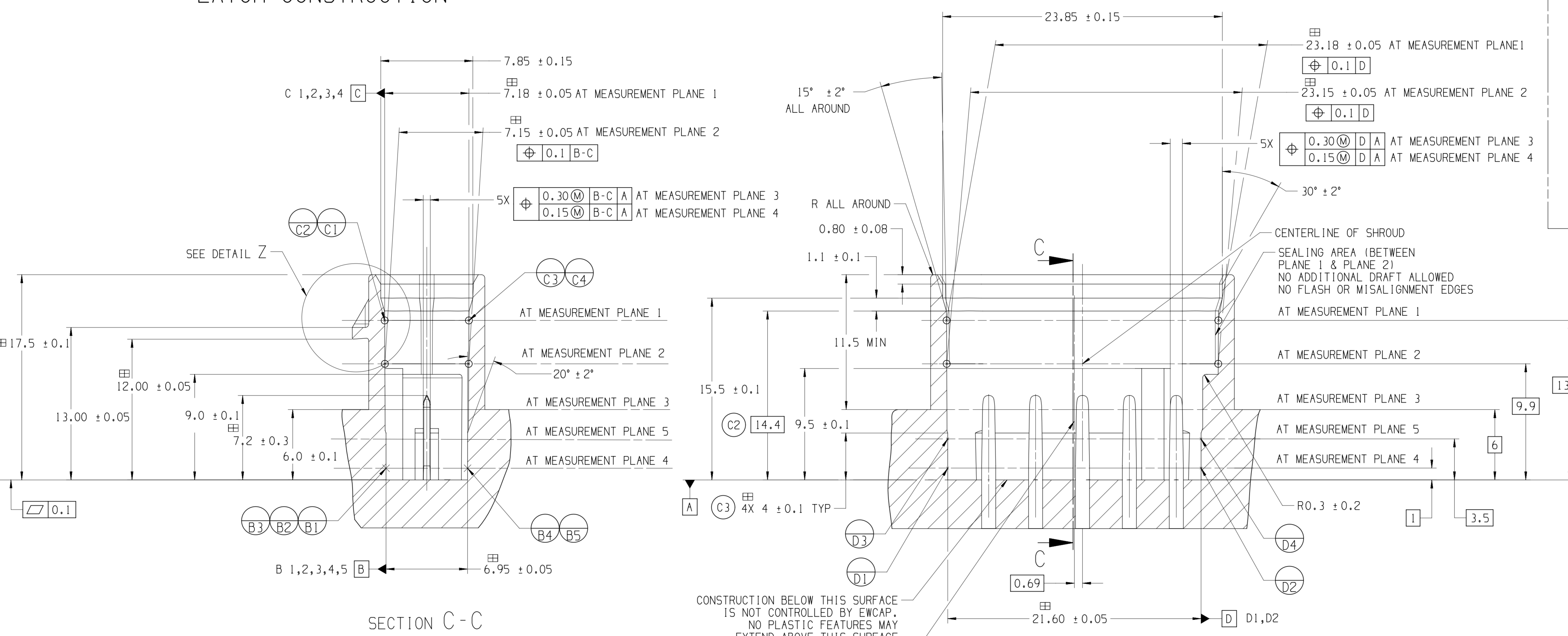
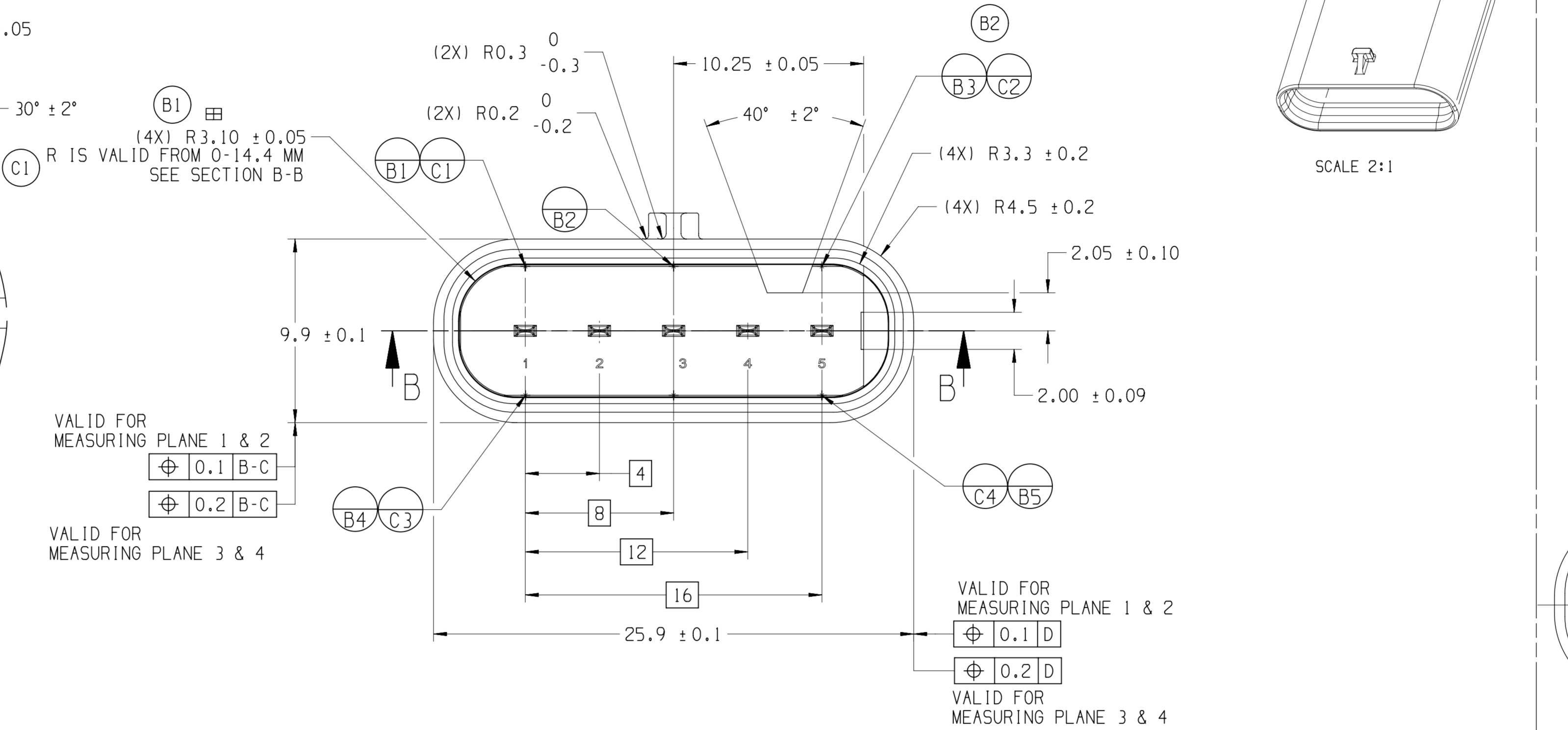
USCAR IS AN LLC CONSISTING OF MEMBERS FROM CHRYSLER GROUP, FORD MOTOR COMPANY AND GM COMPANY.

ANY CHANGE TO A EWCAP CONTROLLED PORTION OF THIS DRAWING, INCLUDING A REVISION RECORD CHANGE, MUST BE APPROVED, IN WRITING, BY THE RESPONSIBLE EWCAP REPRESENTATIVE FROM EACH USCAR MEMBER COMPANY. EACH EWCAP REPRESENTATIVE AUTHORIZED TO SIGN FOR HIS OR HER MEMBER COMPANY IS RESPONSIBLE FOR OBTAINING ALL NECESSARY APPROVALS WITHIN THAT COMPANY PRIOR TO SIGNING FOR THE APPROVAL OF THE CHANGE.

EWCAP EXPRESSLY PROHIBITS ANY PARTY FROM CHANGING EITHER ANY EWCAP CONTROLLED PORTION OF THIS DRAWING OR ANY ASSOCIATED TOOLING BEFORE RECEIVING APPROVAL, SIGNED BY THE AUTHORIZED REPRESENTATIVES, OF THE USCAR MEMBER COMPANIES. REFERENCE TO THE SIGNED CHANGE NOTICE MUST BE ENTERED IN THE DRAWING CONTROL COLUMN.



LATCH CONSTRUCTION



KEYING OPTION Z
THIS UNIVERSAL KEY OPTION IS NOT APPROVED BY USCAR/EWCAP FOR USE ON ORIGINAL EQUIPMENT DEVICES. HOWEVER, THIS KEY OPTION COULD BE ENCOUNTERED ON OLDER DEVICES.

SECOND LOCK UP FEATURE NOT TO BE INCLUDED ON NEWLY TOOLED HEADERS, BUT THIS FEATURE MAY BE PRESENT ON OLDER HEADERS.

TERMINAL CHAMFER FEATURE NOT TO BE INCLUDED ON NEWLY TOOLED HEADERS, BUT THIS FEATURE MAY BE PRESENT ON OLDER HEADERS.

SECTION D-D
PROVIDED FOR INFORMATIONAL PURPOSE ONLY

- NOTES:
- ALL DIMENSIONS SHOWN IN MILLIMETERS.
 - DIMENSIONING AND TOLERANCING PER ASME Y14.5M
 - 0.25 RADII ON ALL CORNERS SHOWN SHARP.
 - ALL UNSPECIFIED RADII 0.25.
 - REFER TO "SAE/USCAR 12 CONNECTOR DESIGN CRITERIA" FOR ADDITIONAL REQUIREMENTS.
 - EXCEPT WHERE NOTED, DRAFT ON OUTSIDE SURFACES IS PERMISSIBLE WITHIN TOLERANCE.
 - SYMBOL INDICATES DRAFT DIRECTION.
 - FOR TERMINAL MATERIAL, DIMENSIONAL AND COATING REQUIREMENTS, SEE EWCAP 001 BLADE DRAWING.
 - TO CLAIM USCAR COMPLIANCE, PARTS DESIGNED AND PRODUCED TO THIS FOOTPRINT DRAWING MUST BE TESTED TO AND MEET THE REQUIREMENTS OF SAE/USCAR 2.
 - REVERSE DRAFT PERMISSIBLE IN LATCH DETAILS.
 - Ø DENOTES DIMENSION THAT MAY BE UTILIZED TO MONITOR PART QUALITY.
 - A FULL SHROUD ON THE MATING CONNECTOR IS REQUIRED TO INSURE THE CONNECTOR-HEADER POLARIZATION FEATURES (OPTIONS A THRU F) WILL FUNCTION. THE FULL SHROUD ALSO PREVENTS SCOOP DAMAGE TO THE HEADER PINS.
 - THIS PART HAS BEEN PREVIOUSLY DESIGNED AND TOOLED WITH THE DATUM REFERENCES AS SHOWN. THE DATUM REFERENCES USED ON THIS DRAWING TAKES PRECEDENCE OVER THE EWCAP DRAWING GUIDELINE DATUM REFERENCE REQUIREMENT.

CHANGE SERIAL NUMBER	LET	REVISION RECORD	DATE	DWN	CHK
167	C	C1 WAS (4X) R3.10±0.05 C2 ADDED [14.4] C3 WAS [4]	08-07-20	KV	SR
155	B	B1 WAS (4X) R3.10±0.05 R15 VALID FROM 0-4 MM SEE SECTION B-B B2 ADDED MISSING DATUM TARGET POINTS B3, C2	05-10-19	SR	CJ
099	A	RELEASING 120-5-005-1-Z04, Z01 CHANGED TO NOT RECOMMENDED	11-14-13	SR	MGW

TOLERANCES (UNLESS OTHERWISE SPECIFIED)
DIMENSIONS ARE IN MILLIMETERS
ANGLES ± 2°
X.X ± 0.25
X.XX ± 0.10

EWCAP

SCALE: 5:1 DRAWN BY: RANGARAJAN CHECKED BY: MATT MAJOR DATE: 11-14-2013

TITLE: DIRECT CONNECT INTERFACE
5 WAY (1 X 5) 1.2MM SEALED MALE

SHEET: 1 OF 1 DRAWING NUMBER: 120-5-005-1-Z04 SIZE: E DO NOT SCALE DRAWING REVISION LEVEL: C

APTIV 35350633

D

C

B

A

D

C

B

A