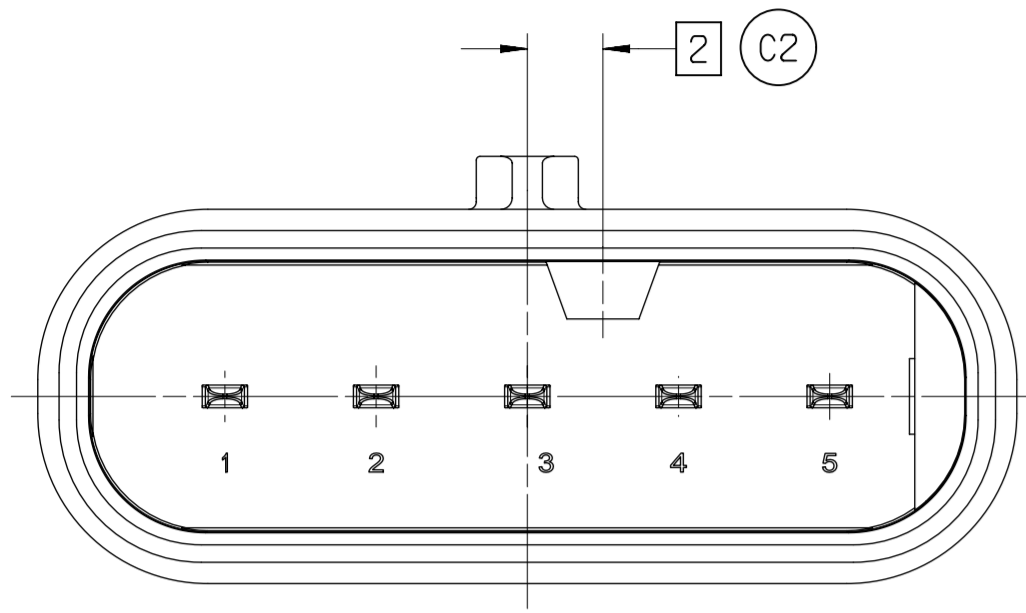
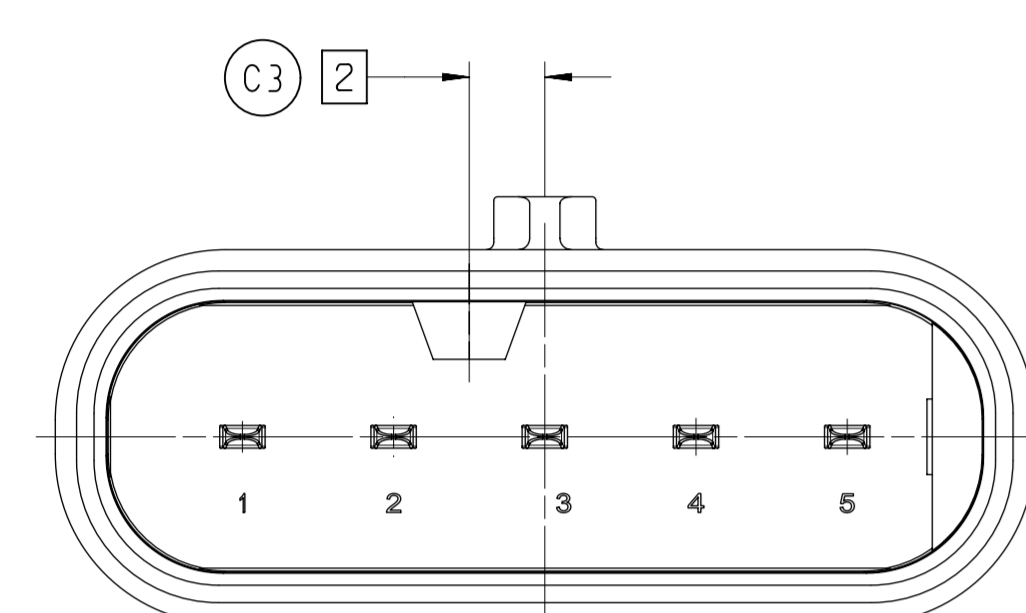


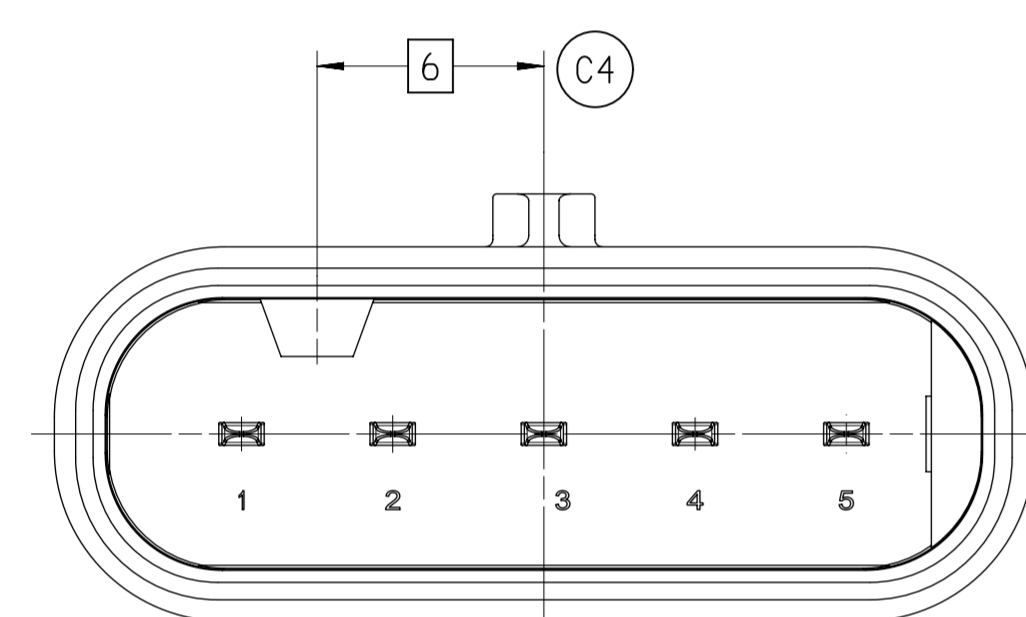
KEYING OPTION A



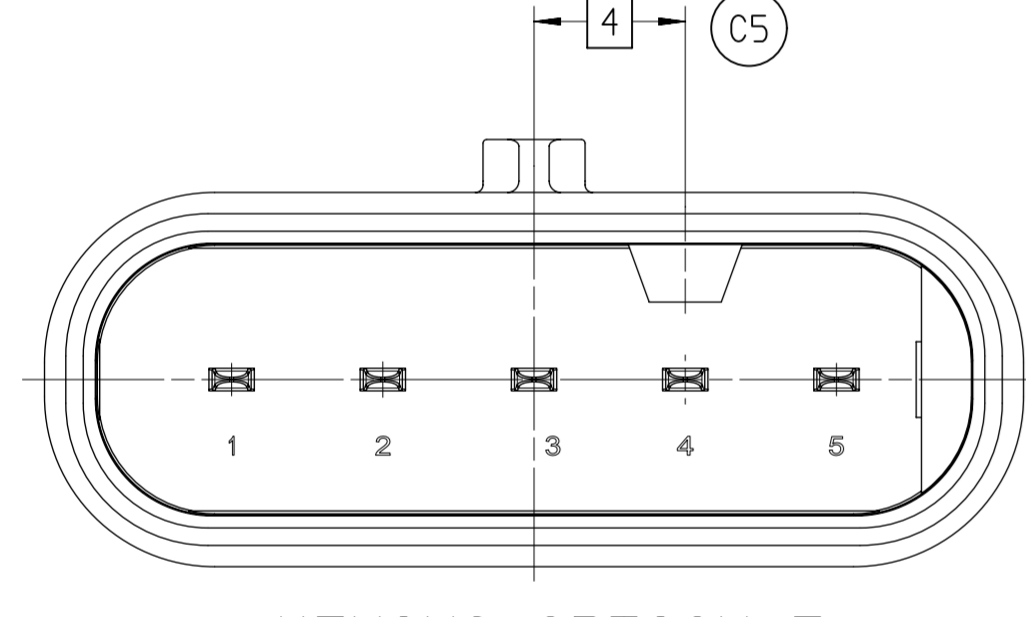
KEYING OPTION B



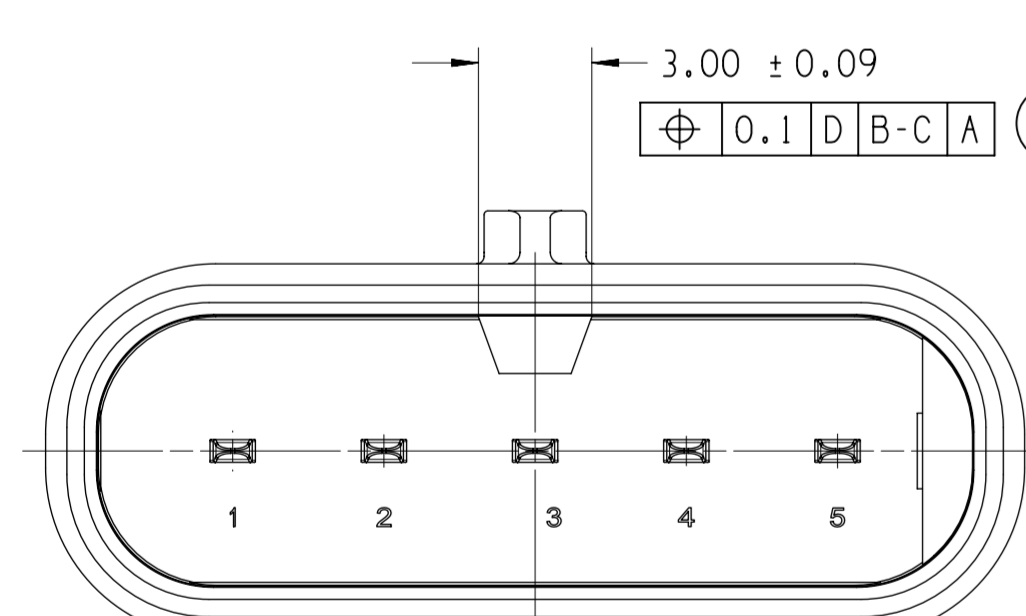
KEYING OPTION C



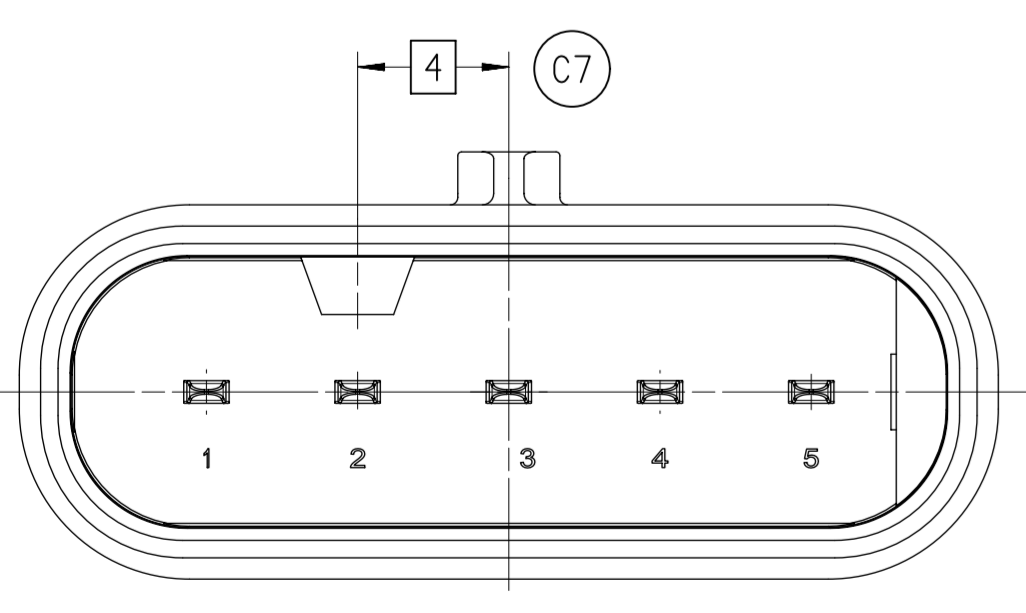
KEYING OPTION D



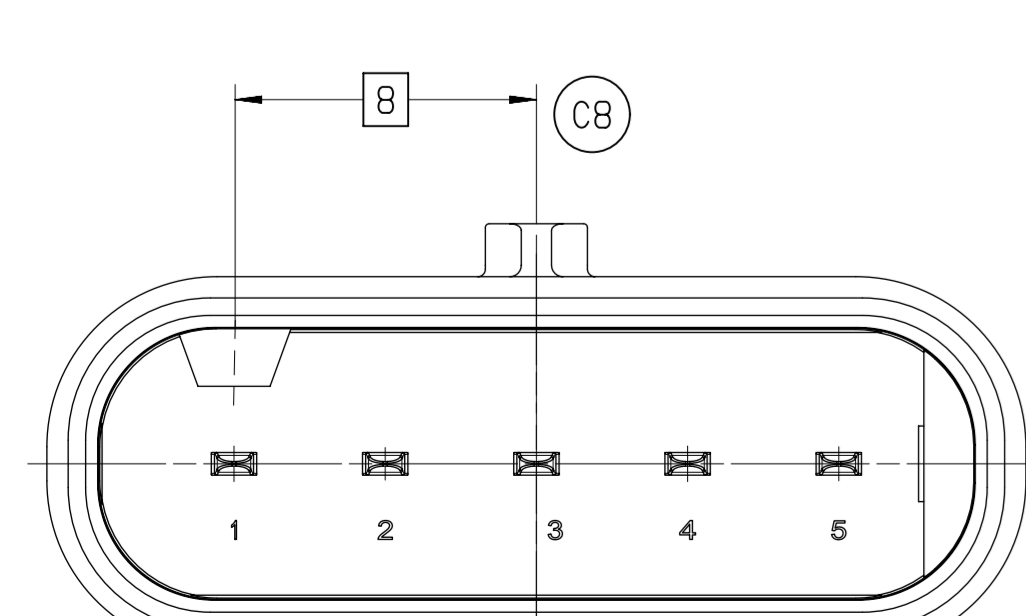
KEYING OPTION E



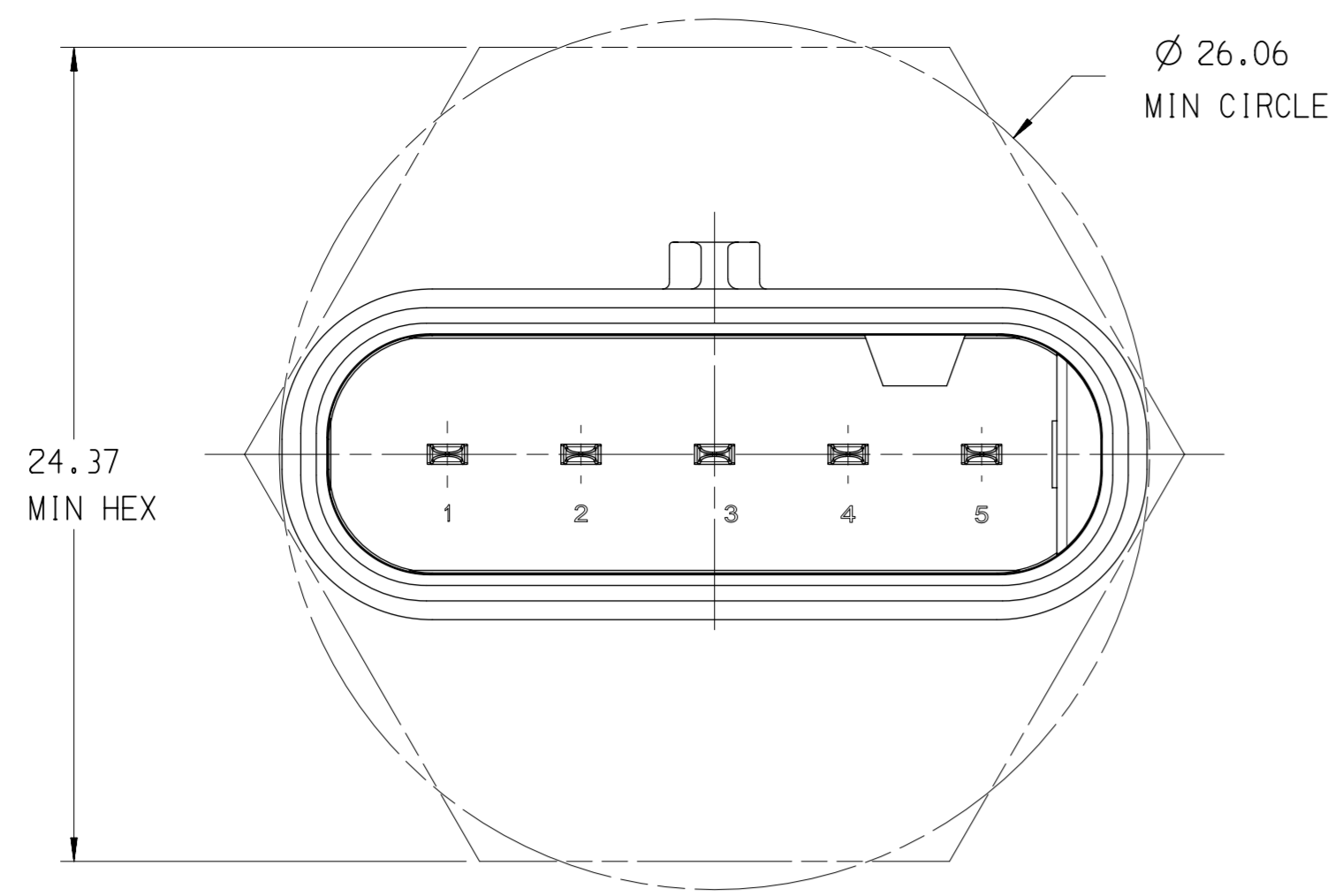
KEYING OPTION F



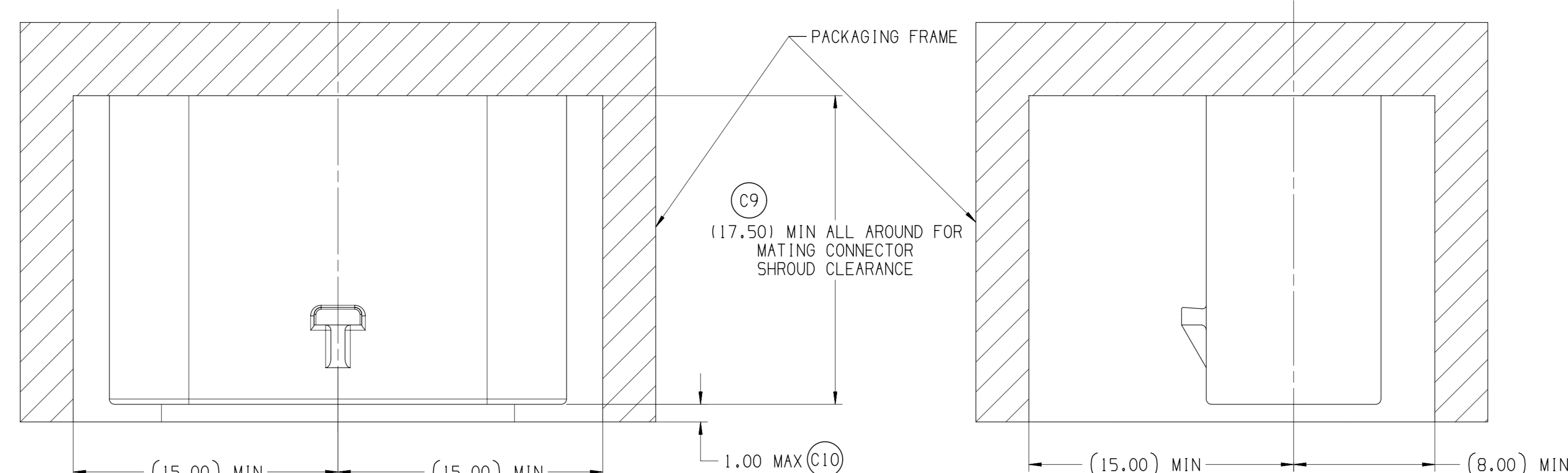
KEYING OPTION G



KEYING OPTION H  
POLARIZATION VIEWS

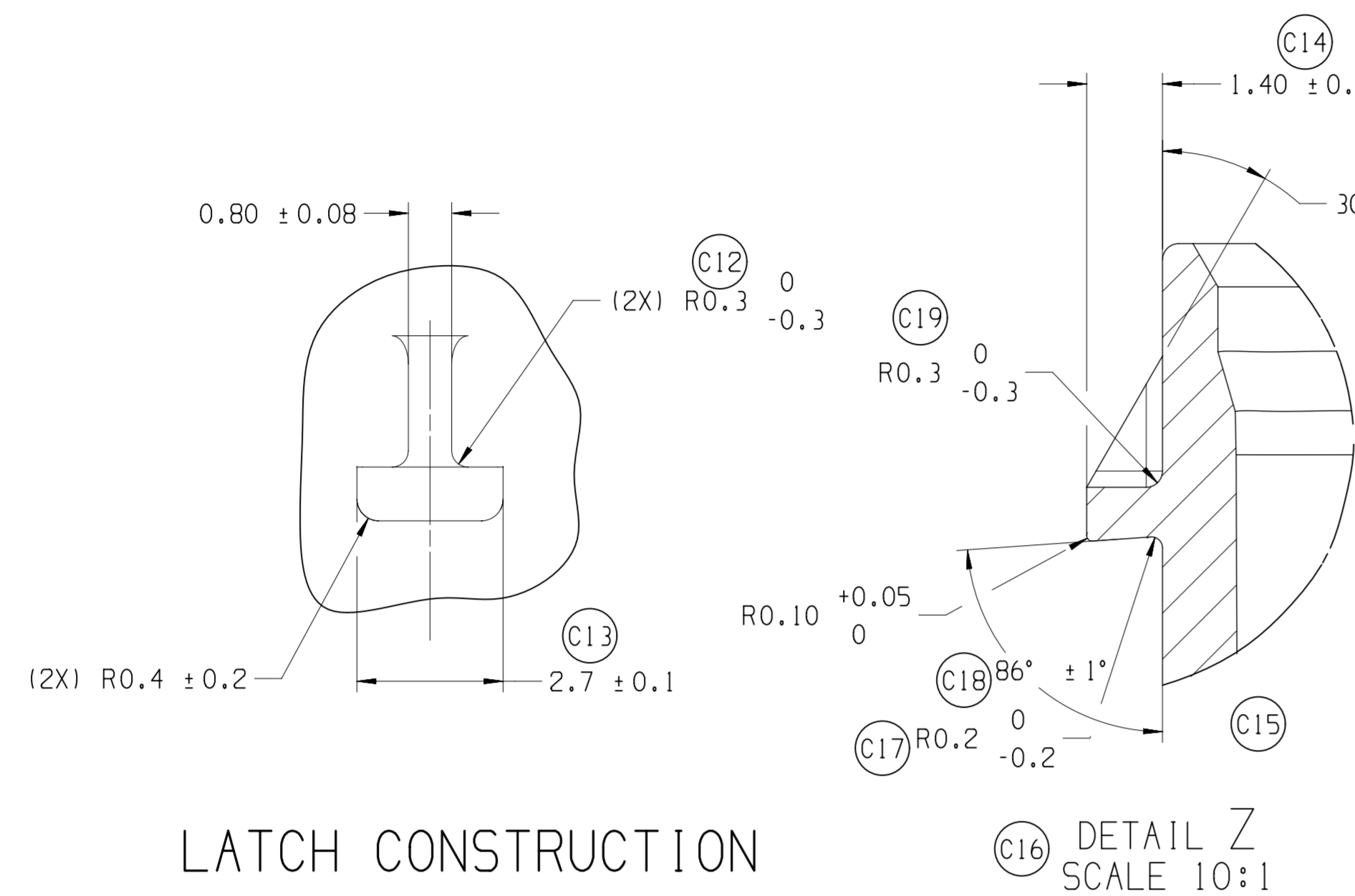


MINIMUM FIT SIZE - PROVIDED FOR INFORMATIONAL PURPOSES ONLY (BASED ON MAXIMUM MATERIAL CONDITION)



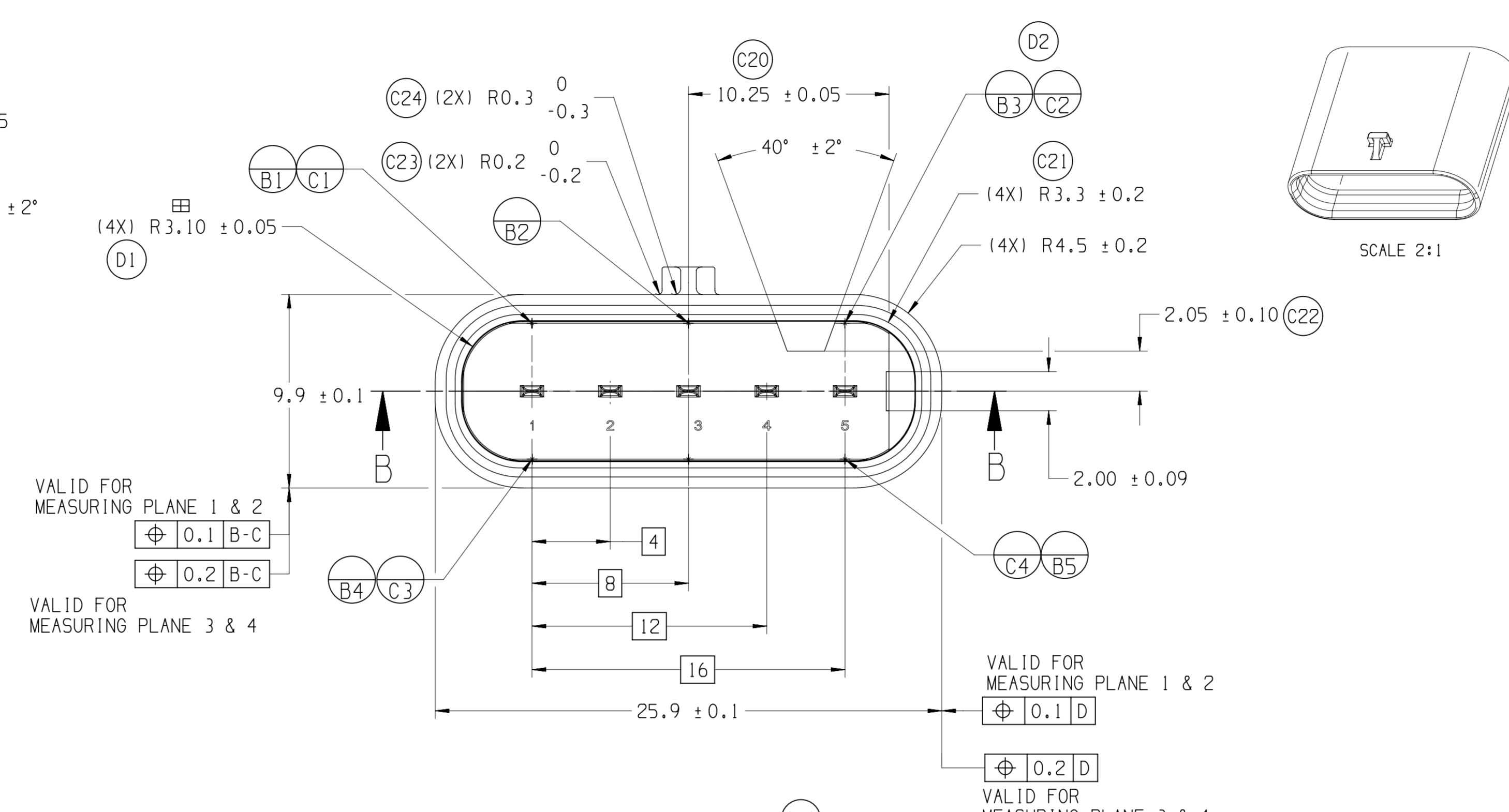
IF THE HEADER IS RECESSED INTO A POCKET, THESE DIMENSIONS REPRESENT THE MINIMUM CLEARANCE REQUIRED FOR THE MATING CONNECTOR SHROUD

**(C11) NOTICE**  
THIS DRAWING OR PORTIONS OF IT ARE CONTROLLED BY THE ELECTRICAL WIRING COMPONENTS APPLICATION PARTNERSHIP (EWCAP) A SUBGROUP OF THE UNITED STATES COUNSEL FOR AUTOMOTIVE RESEARCH LLC (USCAR LLC).  
USCAR IS AN LLC CONSISTING OF MEMBERS FROM CHRYSLER GROUP, FORD MOTOR COMPANY AND GM COMPANY.  
ANY CHANGE TO A EWCAP CONTROLLED PORTION OF THIS DRAWING, INCLUDING A REVISION RECORD CHANGE MUST BE APPROVED, IN WRITING, BY THE RESPONSIBLE EWCAP REPRESENTATIVE FROM EACH USCAR MEMBER COMPANY. EACH EWCAP REPRESENTATIVE AUTHORIZED TO SIGN FOR HIS OR HER MEMBER COMPANY IS RESPONSIBLE FOR OBTAINING ALL NECESSARY APPROVALS WITHIN THAT COMPANY PRIOR TO SIGNING FOR THE APPROVAL OF THE CHANGE.  
EWCAP EXPRESSLY PROHIBITS ANY PARTY FROM CHANGING EITHER ANY EWCAP CONTROLLED PORTION OF THIS DRAWING OR ANY ASSOCIATED TOOLING BEFORE RECEIVING APPROVAL, SIGNED BY THE AUTHORIZED REPRESENTATIVES, OF THE USCAR MEMBER COMPANIES. REFERENCE TO THE SIGNED CHANGE NOTICE MUST BE ENTERED IN THE DRAWING CONTROL COLUMN.

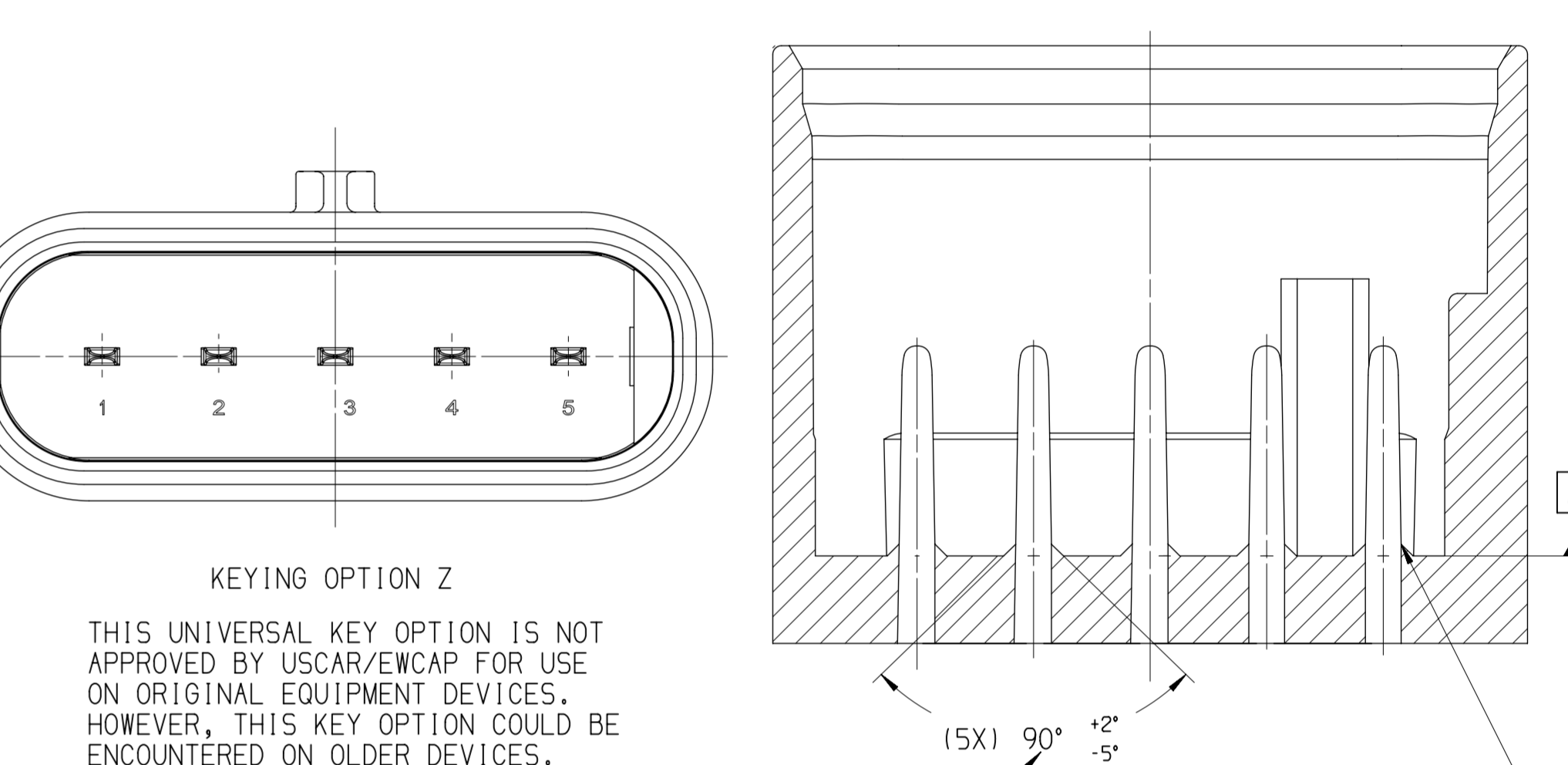
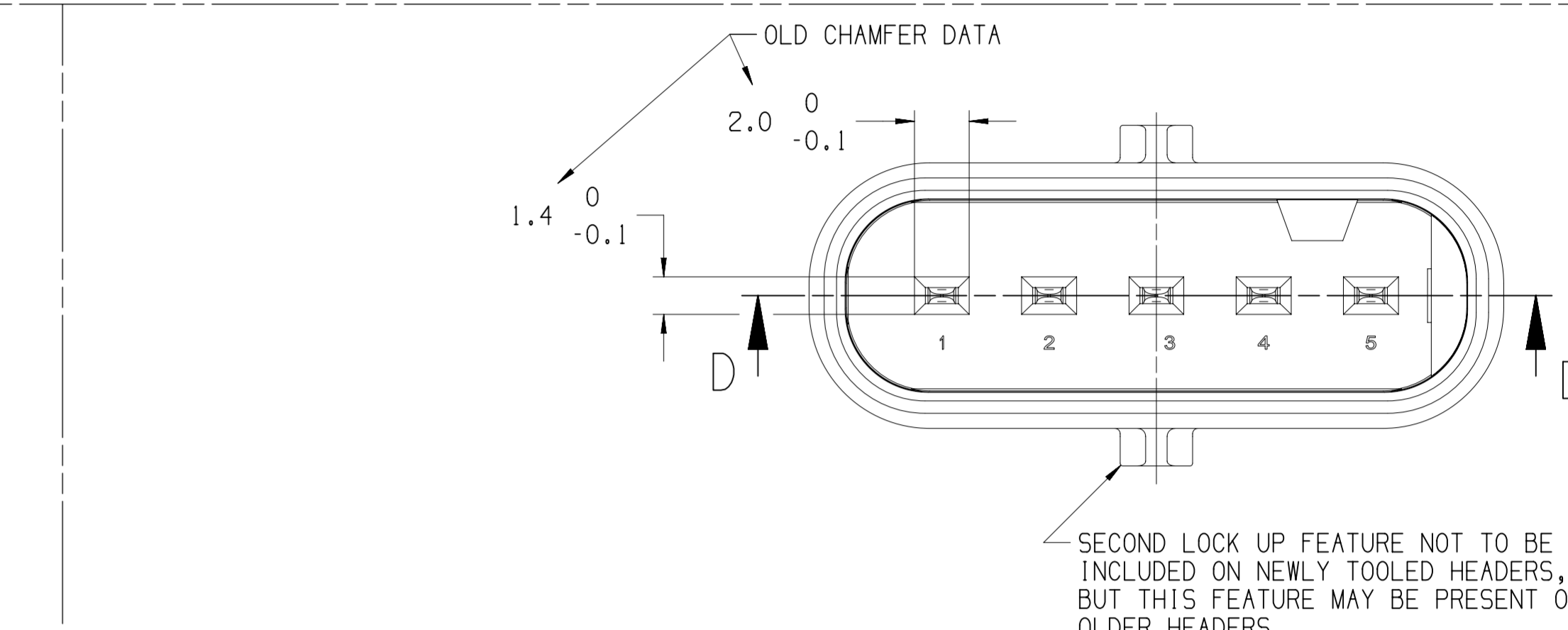


LATCH CONSTRUCTION

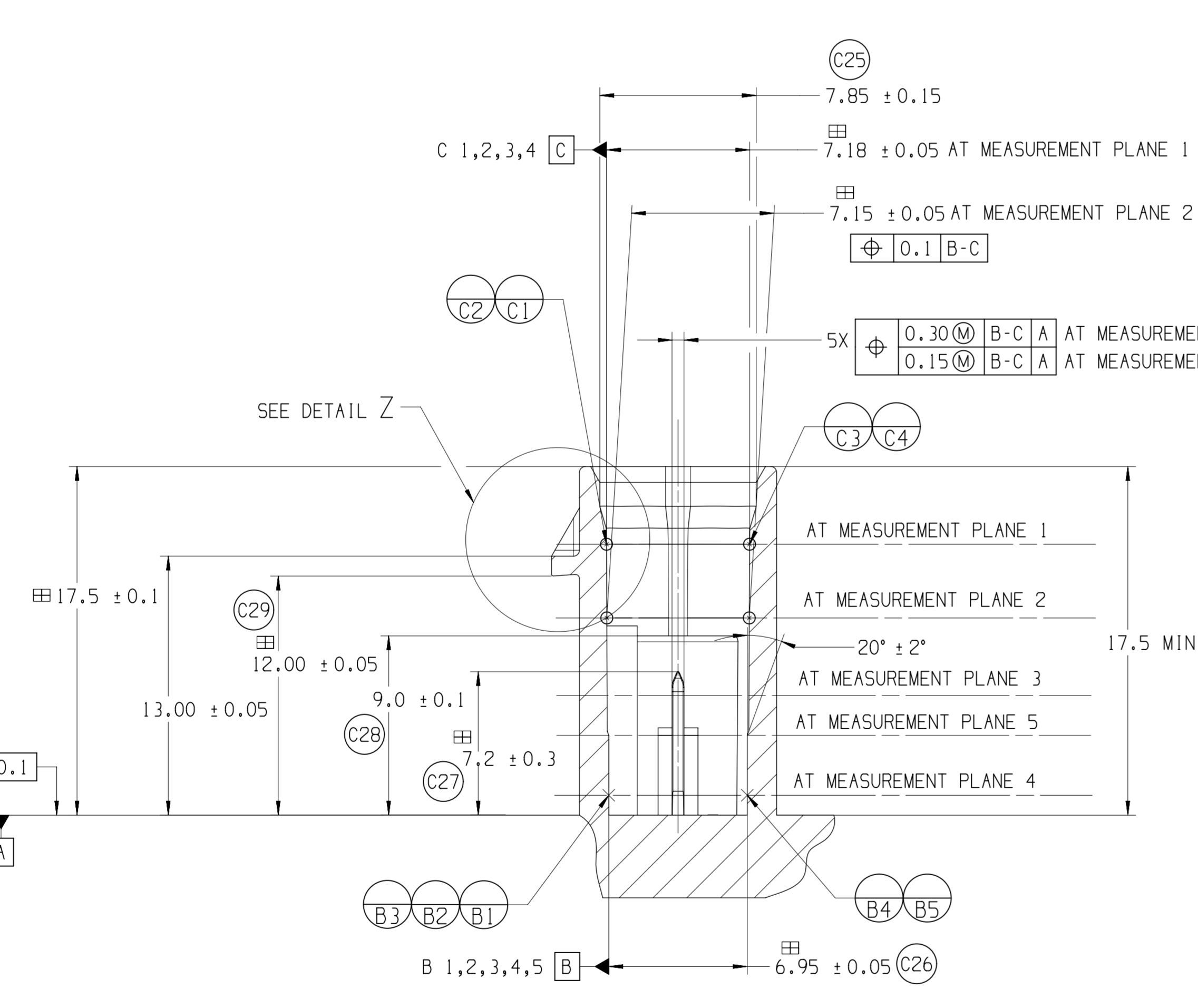
DETAIL Z  
SCALE 10:1



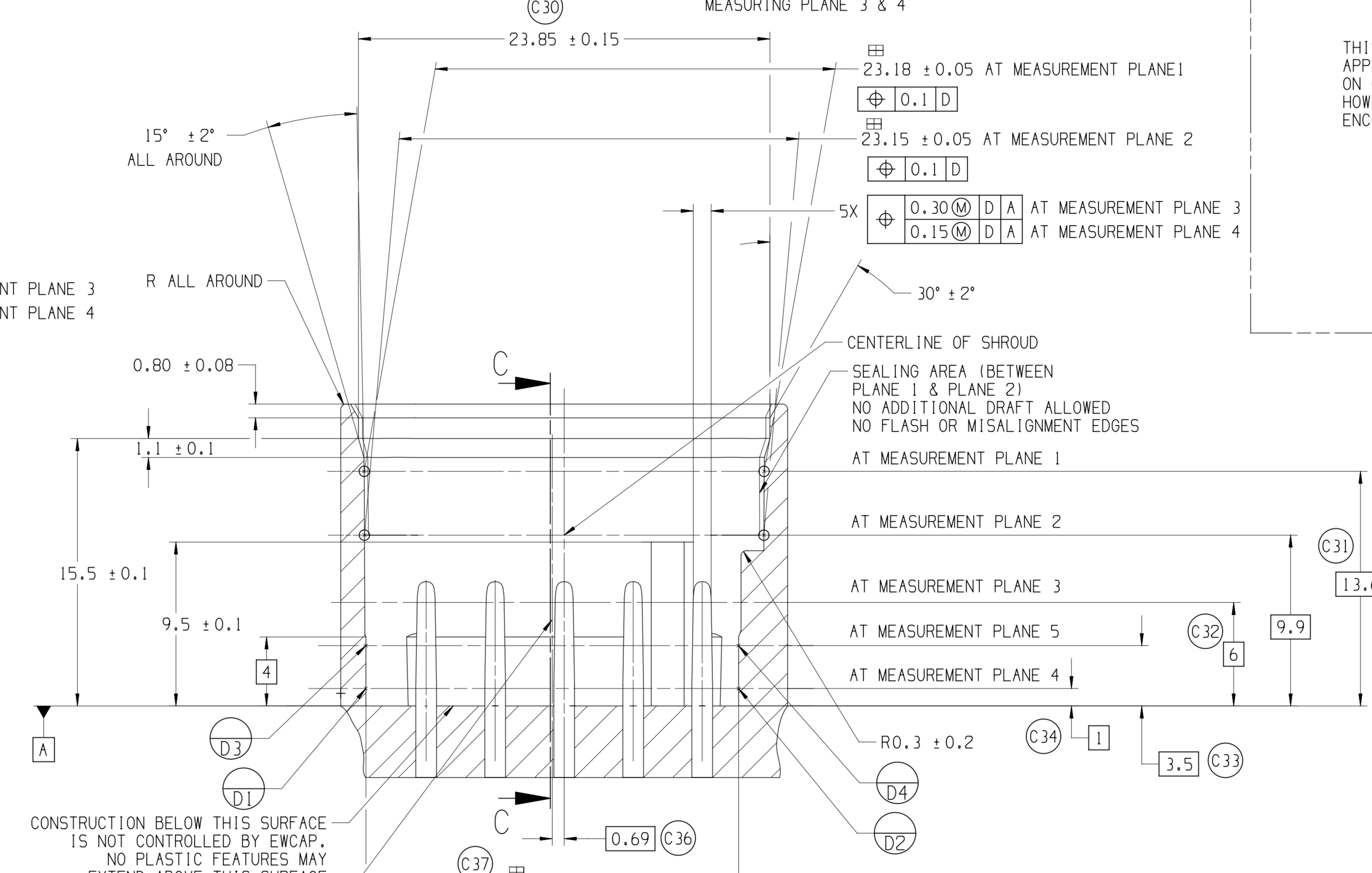
SCALE 2:1



SECTION D-D  
PROVIDED FOR INFORMATIONAL PURPOSE ONLY



SECTION C-C



SECTION B-B

- (C39) NOTES:**
- ALL DIMENSIONS SHOWN IN MILLIMETERS.
  - DIMENSIONING AND TOLERANCING PER ASME Y14.5M
  - 0.25 RADII ON ALL CORNERS SHOWN SHARP.
  - ALL UNSPECIFIED RADII 0.25.
  - REFER TO "SAE/JUSCAR 12 CONNECTOR DESIGN CRITERIA" FOR ADDITIONAL REQUIREMENTS.
  - EXCEPT WHERE NOTED, DRAFT ON OUTSIDE SURFACES IS PERMISSIBLE WITHIN TOLERANCE.
  - SYMBOL INDICATES DRAFT DIRECTION.
  - FOR TERMINAL MATERIAL, DIMENSIONAL AND COATING REQUIREMENTS, SEE EWCAP 001 BLADE DRAWING.
  - TO CLAIM USCAR COMPLIANCE, PARTS DESIGNED AND PRODUCED TO THIS FOOTPRINT DRAWING MUST BE TESTED TO AND MEET THE REQUIREMENTS OF SAE/JUSCAR 2.
  - REVERSE DRAFT PERMISSIBLE IN LATCH DETAILS.
  - Ⓜ DENOTES DIMENSION THAT MAY BE UTILIZED TO MONITOR PART QUALITY.
  - A FULL SHROUD ON THE MATING CONNECTOR IS REQUIRED TO INSURE THE CONNECTOR-HEADER POLARIZATION FEATURES (OPTIONS A THRU F) WILL FUNCTION. THE FULL SHROUD ALSO PREVENTS SCOOP DAMAGE TO THE HEADER PINS.
  - THIS PART HAS BEEN PREVIOUSLY DESIGNED AND TOOLED WITH THE DATUM REFERENCES AS SHOWN. THE DATUM REFERENCES USED ON THIS DRAWING TAKES PRECEDENCE OVER THE EWCAP DRAWING GUIDELINE DATUM REFERENCE REQUIREMENT.

REV	DESCRIPTION	DATE	BY	CHK
155	D1 WAS (4X) R3.10 ± 0.05 R15 VALID FROM 0-4 MM SEE SECTION B-B D2 ADDED MISSING DATUM TARGET POINTS B3, C2	05-10-19	SR	CJ
098	C1 WAS 6.00 ± 0.05 C2 WAS 2.00 ± 0.05 C3 WAS 2.00 ± 0.05 C4 WAS 6.00 ± 0.05 C5 WAS 4.00 ± 0.05 C6 ADDED 0.10 ± 0.10 B-C A C7 WAS 4.00 ± 0.05 C8 WAS 8.00 ± 0.05 C9 ADDED (17.50) C10 ADDED 1.00 MAX C11 REVISED DISCLAIMER NOTICE C12 ADDED (2X) R0.3 0/-0.3 C13 WAS 2.8 0/-0.2 C14 WAS 1.45 0/-0.10 C15 REMOVED TEST DEVICE Ø 1.50 ± 0.01 C16 REVISED DETAIL NAME C17 ADDED R0.2 0/-0.2 C18 WAS R7 0/-2 C19 ADDED R0.3 0/-0.3 C20 WAS 10.2 ± 0.1/0 C21 WAS (4X) R3.10 ± 0.1 C22 WAS 1.95 ± 0.20/0 C23 ADDED (2X) R0.2 0/-0.2 C24 ADDED (2X) R0.3 0/-0.3 C25 WAS 7.7 ± 0.3/0 0.2 ± 0.2 C26 WAS 6.9 ± 0.1/0 0.1 ± 0.1 C27 WAS 7.0 ± 0.1 C28 REMOVED 10.5 ± 0.1/0 C29 WAS (11.95) C30 WAS 23.7 ± 0.3/0 0.2 ± 0.2 C31 WAS (13.55) C32 WAS (1) C33 ADDED (3.5) C34 ADDED (1) C35 REMOVED (2.1) C36 ADDED (0.69) C37 ADDED 21.60 ± 0.05 C38 REMOVED 19.45 ± 0.05/0 C39 REVISED NOTES	01-03-14	SR	MGM
082	B ADDED KEYING OPTIONS E, F, G & H AND ADDED NOTE FOR CONSTRUCTION BELOW DATUM A	05-18-10	SR	FAH
	A RELEASED	01-08-09	SR	FAH
CHANGE SERIAL NUMBER	LET REVISION RECORD	DATE	DWN	CHK

TOLERANCES (UNLESS OTHERWISE SPECIFIED)  
DIMENSIONS ARE IN MILLIMETERS  
ANGLES ± 2°  
X.X ± 0.25  
X.XX ± 0.10

**EWCAP**

SCALE: 5:1 DRAWN BY: RANGARAJAN CHECKED BY: FRANK HOLUB DATE: 11-19-2008  
TITLE: DIRECT CONNECT INTERFACE 5 WAY (1 X 5) 1.2MM SEALED MALE  
SHEET: 1 OF 1 DRAWING NUMBER: 120-S-005-1-Z02 SIZE: E DO NOT SCALE DRAWING REVISION LEVEL: D  
APTV PCC0609185