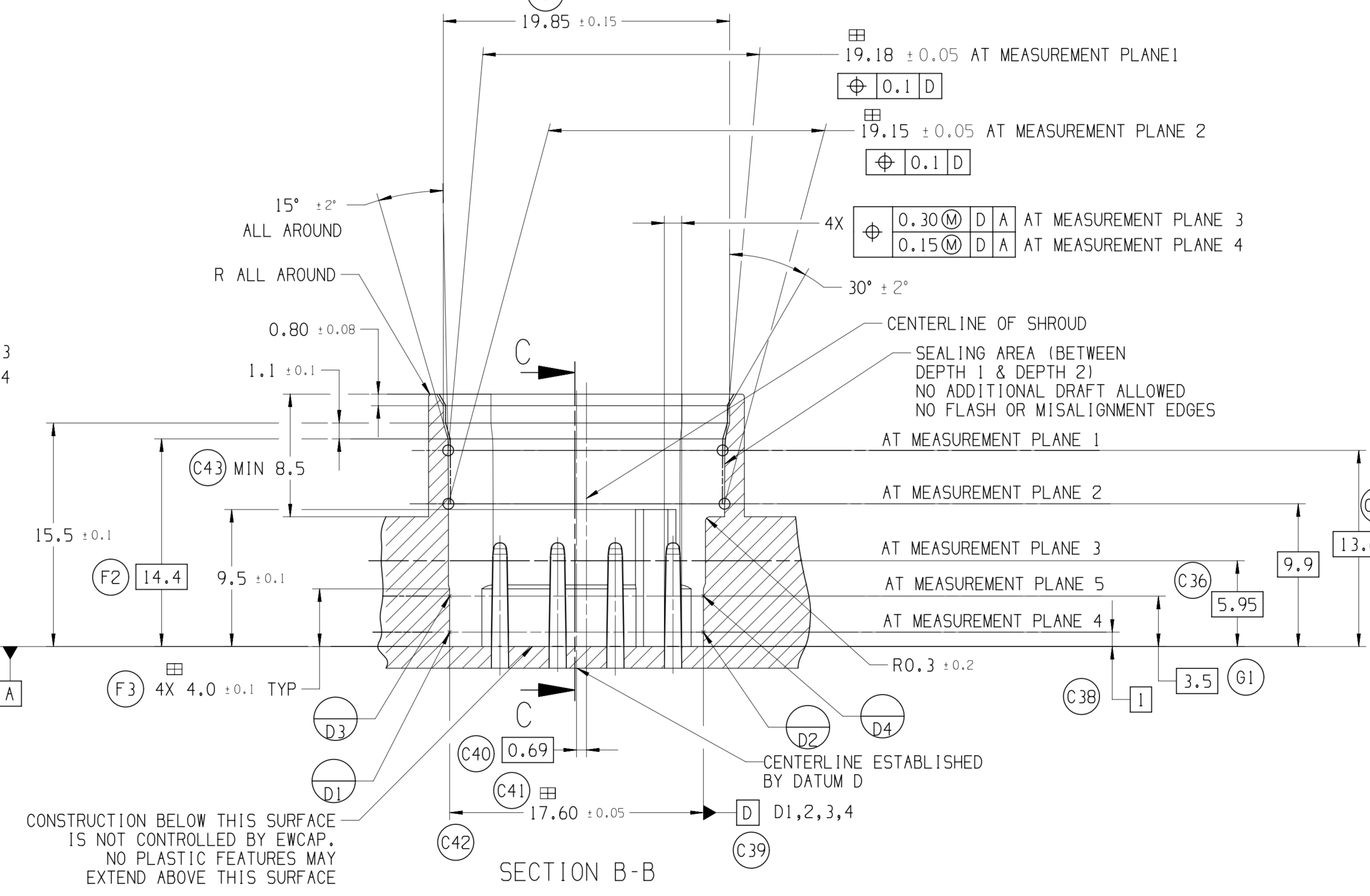
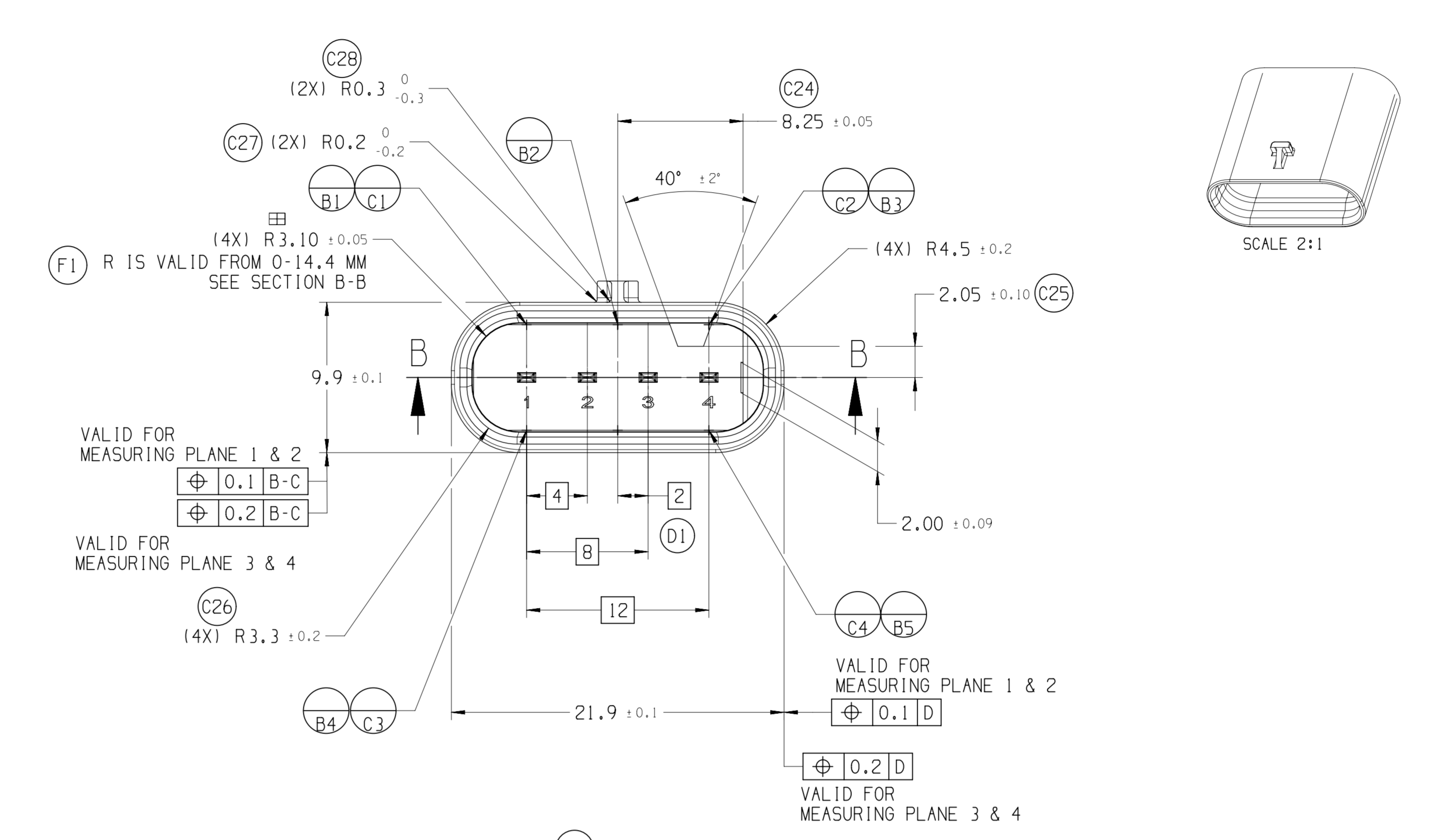
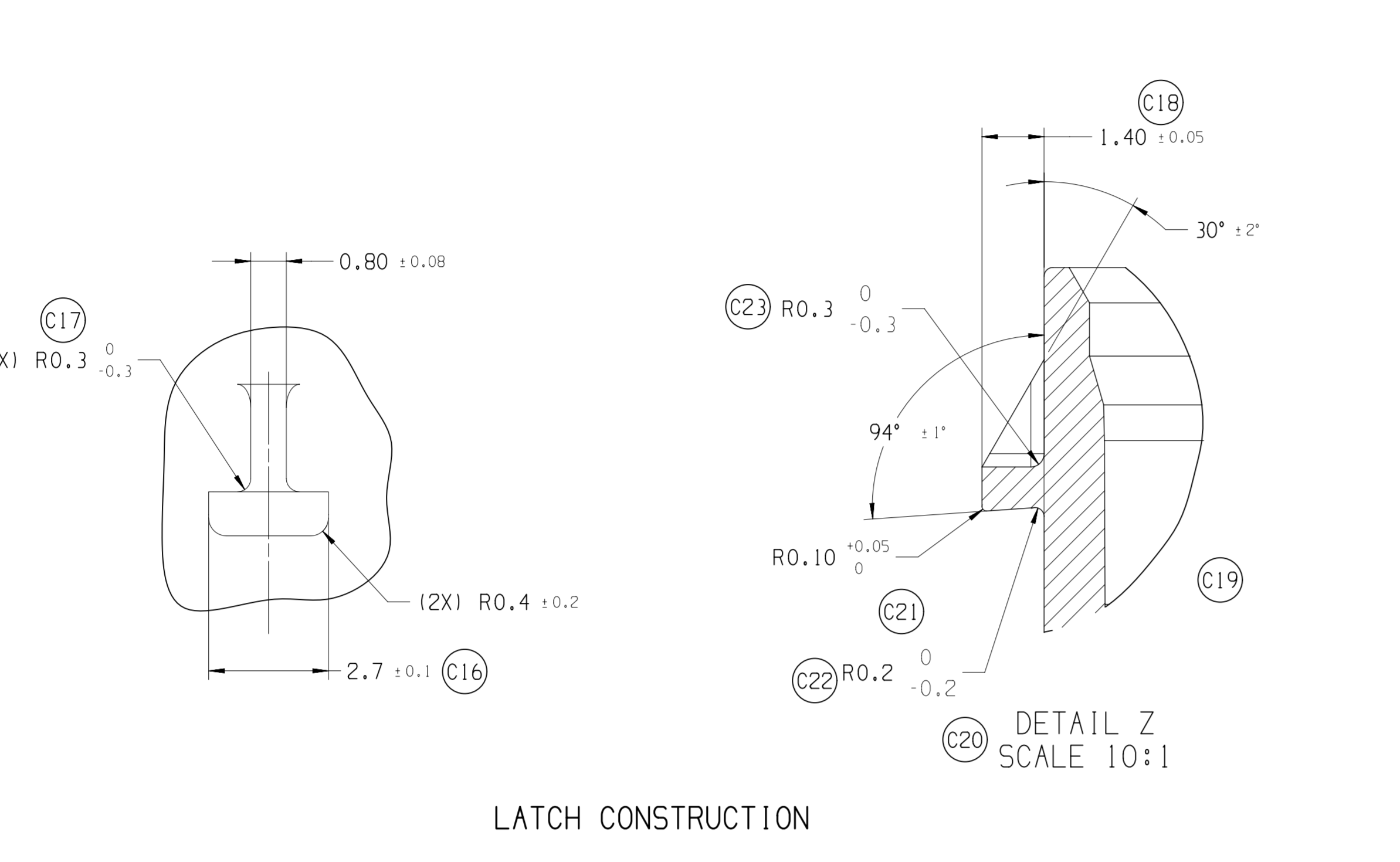
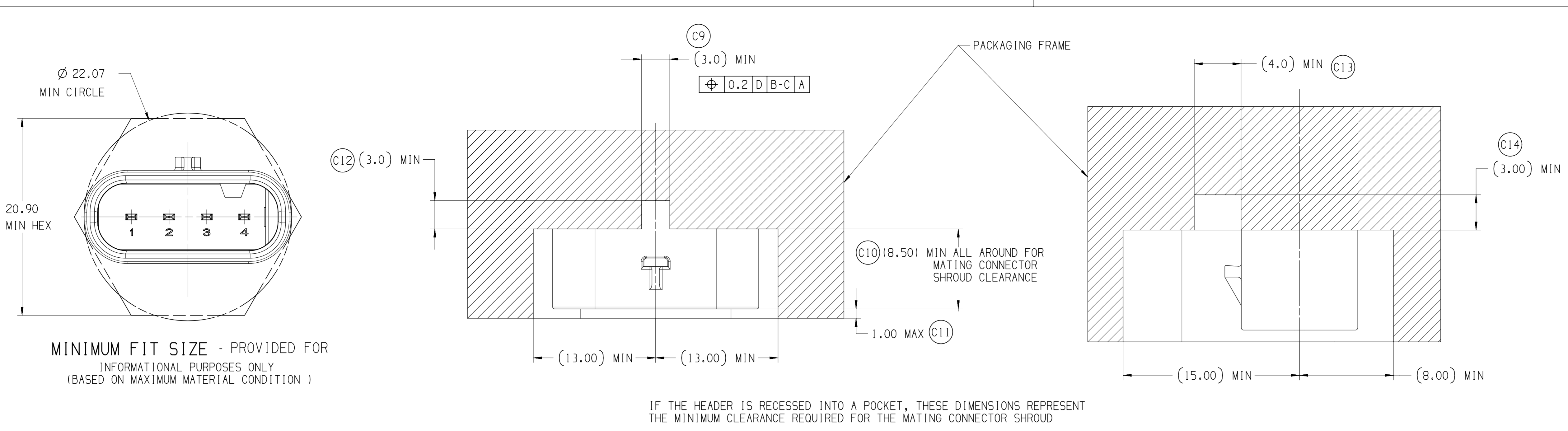


POLARIZATION VIEWS



- (C44) NOTES:
- ALL DIMENSIONS SHOWN IN MILLIMETERS.
  - DIMENSIONING AND TOLERANCING PER ASME Y14.5M
  - 0.25 RADII ON ALL CORNERS SHOWN SHARP.
  - ALL UNSPECIFIED RADII 0.25.
  - REFER TO "SAE/USCAR 12 CONNECTOR DESIGN CRITERIA" FOR ADDITIONAL REQUIREMENTS.
  - EXCEPT WHERE NOTED, DRAFT ON OUTSIDE SURFACES IS PERMISSIBLE WITHIN TOLERANCE.
  - SYMBOL INDICATES DRAFT DIRECTION.
  - FOR TERMINAL MATERIAL, DIMENSIONAL AND COATING REQUIREMENTS, SEE EWCAP 001 BLADE DRAWING.
  - TO CLAIM USCAR COMPLIANCE, PARTS DESIGNED AND PRODUCED TO THIS FOOTPRINT DRAWING MUST BE TESTED TO AND MEET THE REQUIREMENTS OF SAE/USCAR 2.
  - REVERSE DRAFT PERMISSIBLE IN LATCH DETAILS.
  - ⊕ DENOTES DIMENSION THAT MAY BE UTILIZED TO MONITOR PART QUALITY.
  - A FULL SHROUD ON THE MATING CONNECTOR IS REQUIRED TO INSURE THE CONNECTOR-HEADER POLARIZATION FEATURES (OPTIONS A THRU F) WILL FUNCTION. THE FULL SHROUD ALSO PREVENTS SCOOP DAMAGE TO THE HEADER PINS.
  - THIS PART HAS BEEN PREVIOUSLY DESIGNED AND TOOLED WITH THE DATUM REFERENCES AS SHOWN. THE DATUM REFERENCES USED ON THIS DRAWING TAKES PRECEDENCE OVER THE EWCAP DRAWING GUIDELINE DATUM REFERENCE REQUIREMENT.

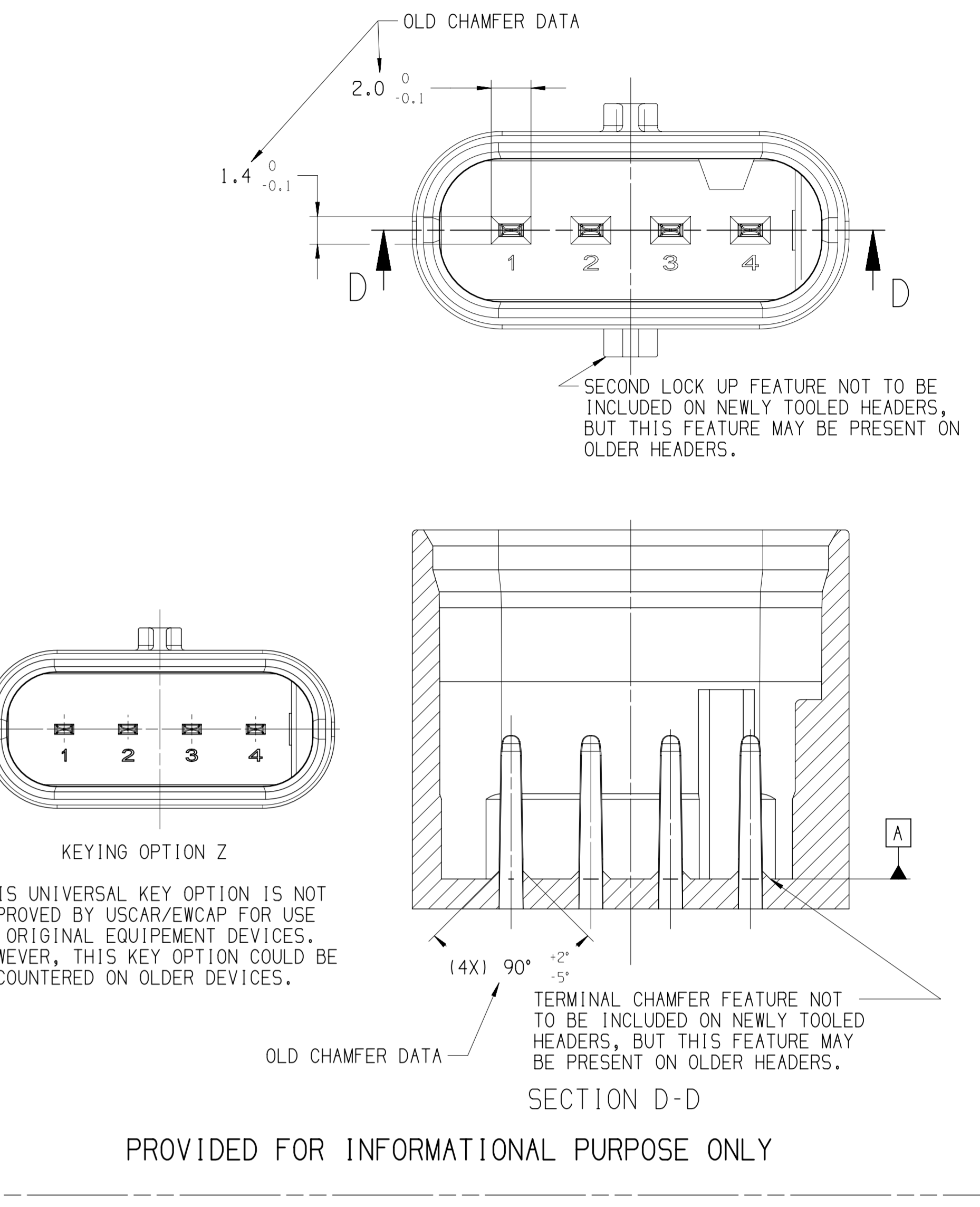
NOTICE

(C15) THIS DRAWING OR PORTIONS OF IT ARE CONTROLLED BY THE ELECTRICAL WIRING COMPONENTS APPLICATION PARTNERSHIP (EWCAP), A SUBGROUP OF THE UNITED STATES COUNSEL FOR AUTOMOTIVE RESEARCH LLC (USCAR LLC).

USCAR IS AN LLC CONSISTING OF MEMBERS FROM CHRYSLER GROUP, FORD MOTOR COMPANY AND GM COMPANY.

ANY CHANGE TO A EWCAP CONTROLLED PORTION OF THIS DRAWING, INCLUDING A REVISION RECORD CHANGE MUST BE APPROVED, IN WRITING, BY THE RESPONSIBLE EWCAP REPRESENTATIVE FROM EACH USCAR MEMBER COMPANY. EACH EWCAP REPRESENTATIVE AUTHORIZED TO SIGN FOR HIS OR HER MEMBER COMPANY IS RESPONSIBLE FOR OBTAINING ALL NECESSARY APPROVALS WITHIN THAT COMPANY PRIOR TO SIGNING FOR THE APPROVAL OF THE CHANGE.

EWCAP EXPRESSLY PROHIBITS ANY PARTY FROM CHANGING EITHER ANY EWCAP CONTROLLED PORTION OF THIS DRAWING OR ANY ASSOCIATED TOOLING BEFORE RECEIVING APPROVAL, SIGNED BY THE AUTHORIZED REPRESENTATIVES, OF THE USCAR MEMBER COMPANIES. REFERENCE TO THE SIGNED CHANGE NOTICE MUST BE ENTERED IN THE DRAWING CONTROL COLUMN.



176	H	H1 ADDED (13.00) MIN	08-14-23	KV	SR
175	G	G1 WAS (4,5)	08-14-23	KV	SR
167	F	F1 WAS (4X) R3.10±0.05 F2 ADDED (14,4) F3 WAS 4.0±0.1	08-14-23	KV	SR
162	E	E1 UPDATED DIMENSION ORIGIN	01-29-20	KV	SR
148	D	D1 ADDED (2)	11-29-17	K6	BB
098	C	C1 WAS 4.80±0.05 C2 WAS 1.60±0.05 C3 WAS 1.60±0.05 C4 WAS 4.80±0.05 C5 WAS 3.20±0.05 C6 ADDED (0.1) D B-C A C7 WAS 3.20±0.05 C8 WAS 6.40±0.05 C9 WAS (13.01) C10 ADDED (8.5) C11 ADDED 1.00 MAX C12 WAS (13.0) C15 REVISED DISCLAIMER NOTICE C16 WAS 2.8±0.02 C17 ADDED (2X) R0.3 0/-0.3 C18 WAS 1.45 0/-0.10 C19 REMOVED TEST DEVICE Ø 1.50±0.01 C20 REVISED DETAIL NAME C21 WAS 87° 0/-2° C22 ADDED R0.2 0/-0.2 C23 ADDED R0.3 0/-0.3 C24 WAS 8.2 ±0.1/0 C25 WAS 1.95 ±0.20/0 C26 WAS (4X) R3.4 ±0.1 C27 ADDED (2X) R0.2 0/-0.2 C28 ADDED (2X) R0.3 0/-0.3 C29 WAS 7.7 ±0.3/0 (0.2) B C30 WAS 6.9 ±0.1/0 (0.1) B C31 WAS 7.0±0.1 C32 REMOVED (0.5±0.1/0 C33 WAS (11.95) C34 WAS 19.7 ±0.3/0 (0.2) C C35 WAS (13.55) C36 WAS (1) C37 ADDED (4.5) C38 ADDED (1) C39 REMOVED (2.1) C40 ADDED (0.69) C41 ADDED 17.60±0.05 C42 REMOVED 15.45 ±0.05/0 C43 WAS MIN. 8.4 C44 REVISED NOTES	12-10-13	SR	MGM
082	B	ADDED KEYING OPTIONS E, F, G & H AND ADDED NOTE FOR CONSTRUCTION BELOW DATUM A	05-18-10	SR	FAH
-	A	RELEASED	01-09-09	SR	FAH

TOLERANCES (UNLESS OTHERWISE SPECIFIED)  
DIMENSIONS ARE IN MILLIMETERS

ANGLES ± 2°  
X.X ± 0.25  
X.XX ± 0.10

EWCAP

SCALE: 5:1 DRAWN BY: RANGARAJAN CHECKED BY: FRANK HOLLUB DATE: 11-20-2008

TITLE: DIRECT CONNECT INTERFACE  
4 WAY (1 X 4) 1.2MM SEALED MALE

SHEET: DRAWING NUMBER: 120-S-004-1-Z01 SIZE: E DO NOT SCALE DRAWING REVISION LEVEL: H

APTV 35179180