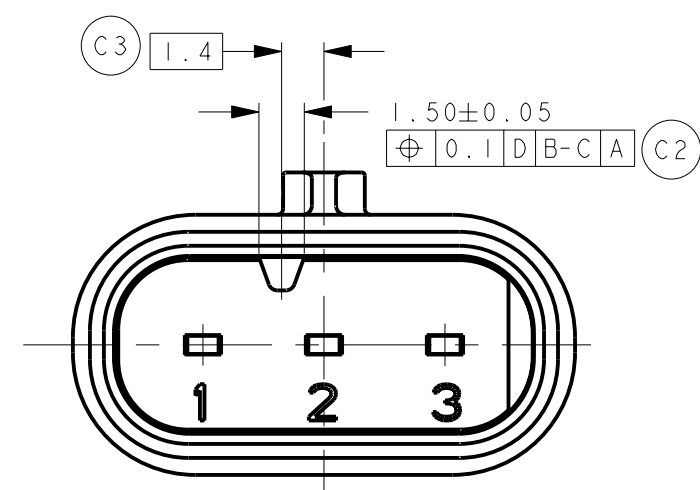
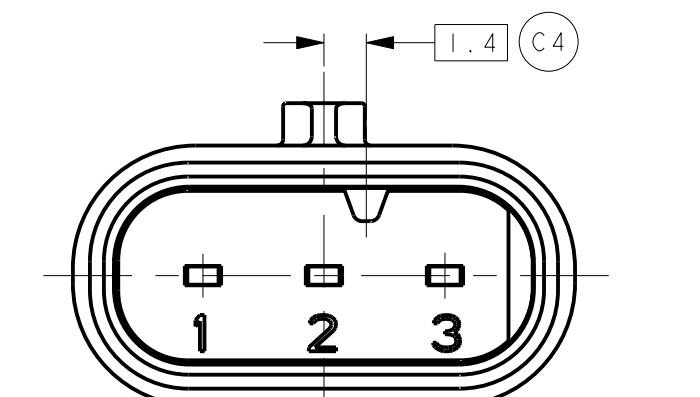


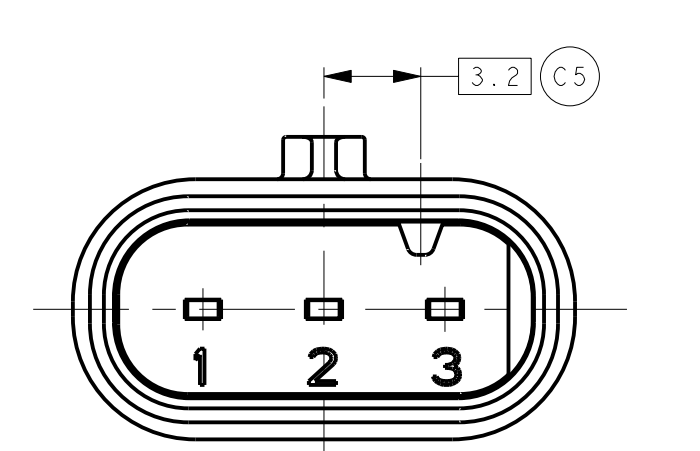
KEYING OPTION A



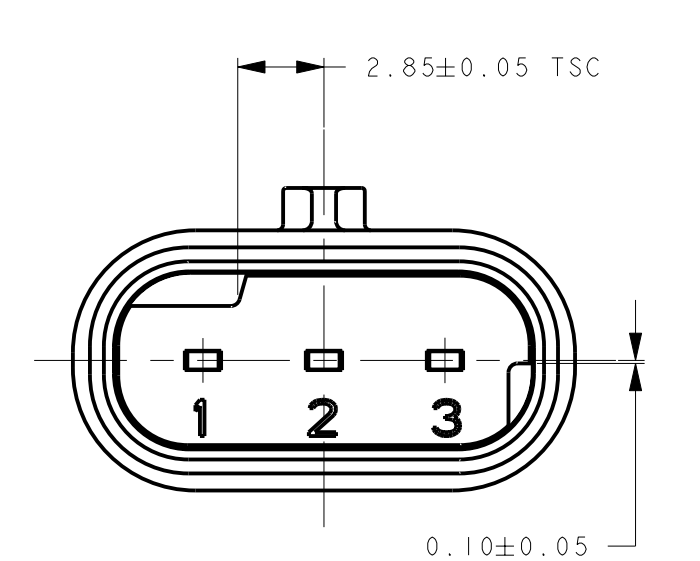
KEYING OPTION B



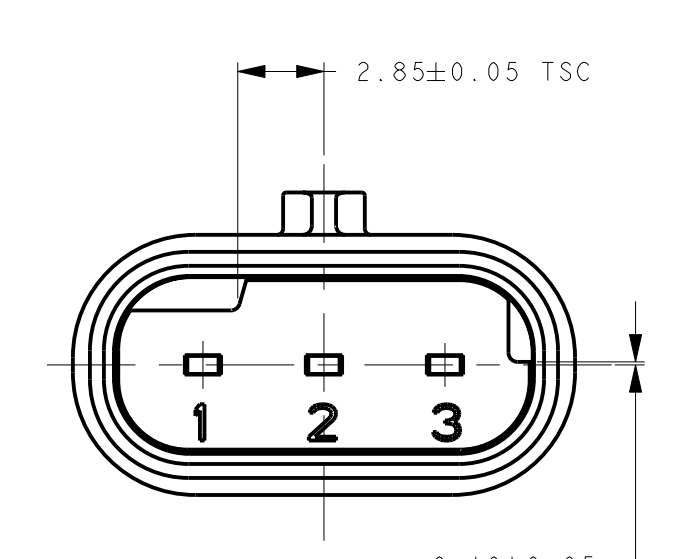
KEYING OPTION C



KEYING OPTION D

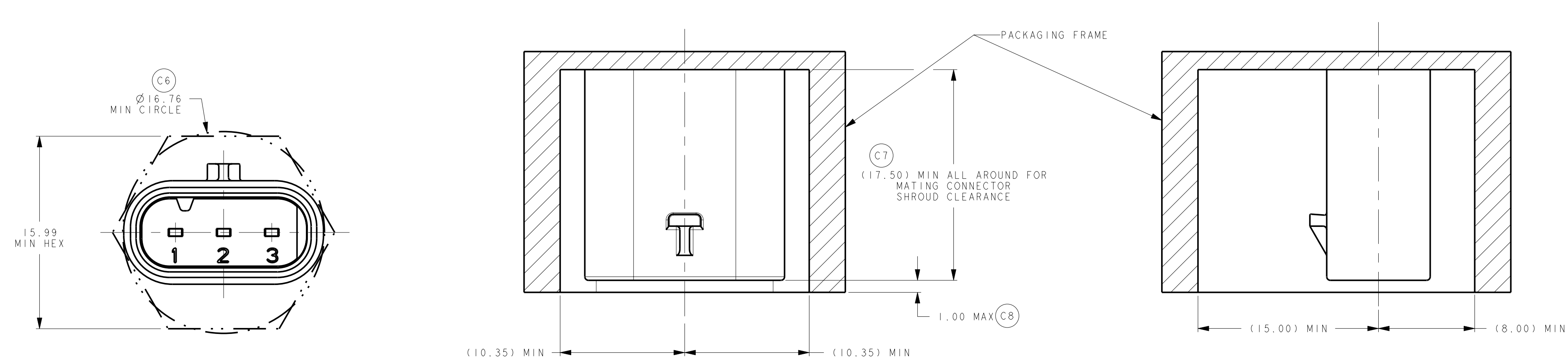


KEYING OPTION E



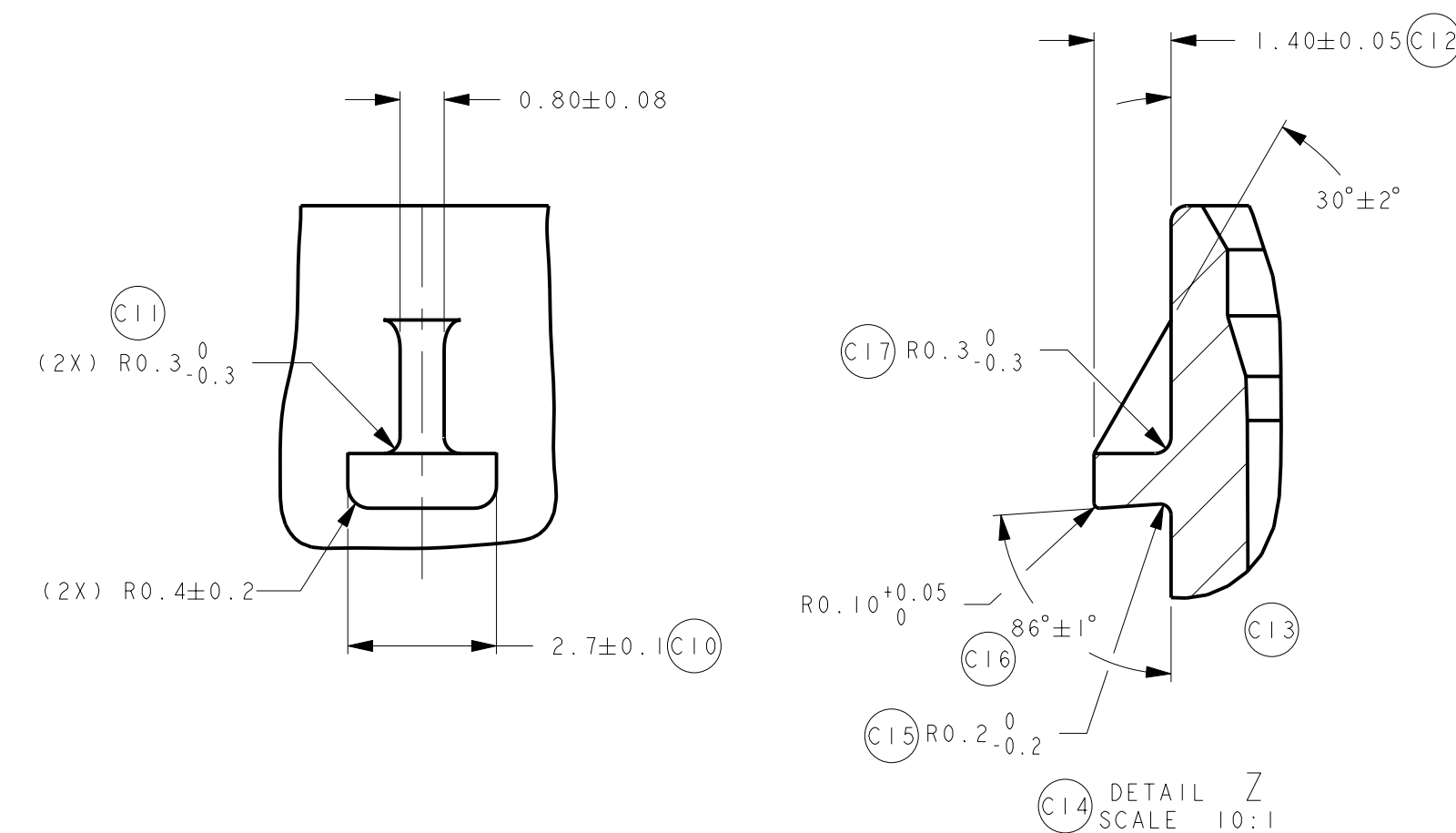
KEYING OPTION F

POLARIZATION VIEWS

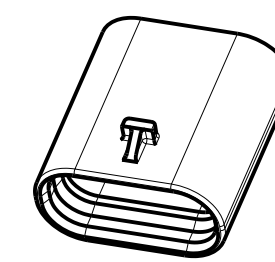
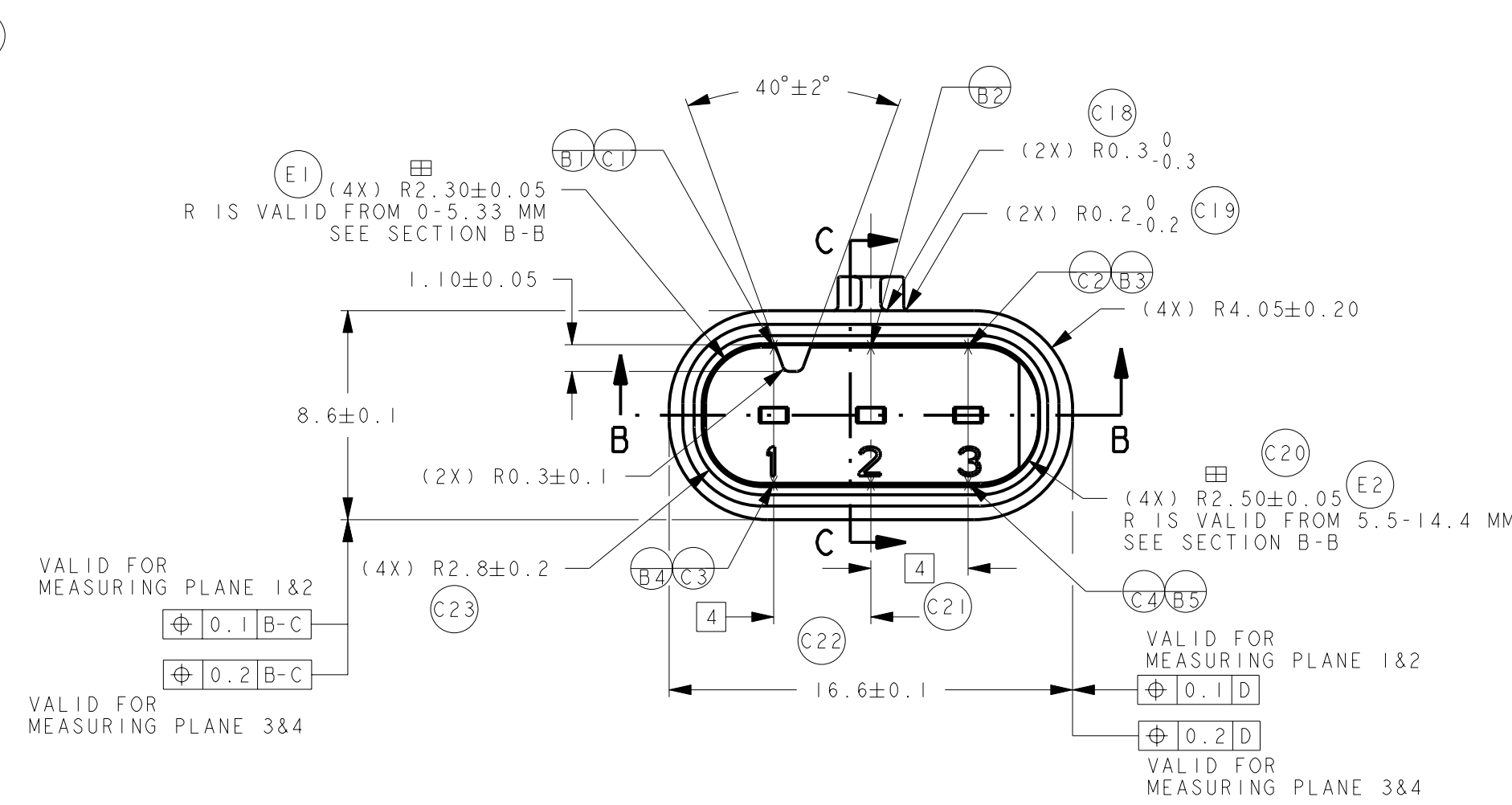


MINIMUM FIT SIZE - PROVIDED FOR INFORMATIONAL PURPOSES ONLY (BASED ON MAXIMUM MATERIAL CONDITION)

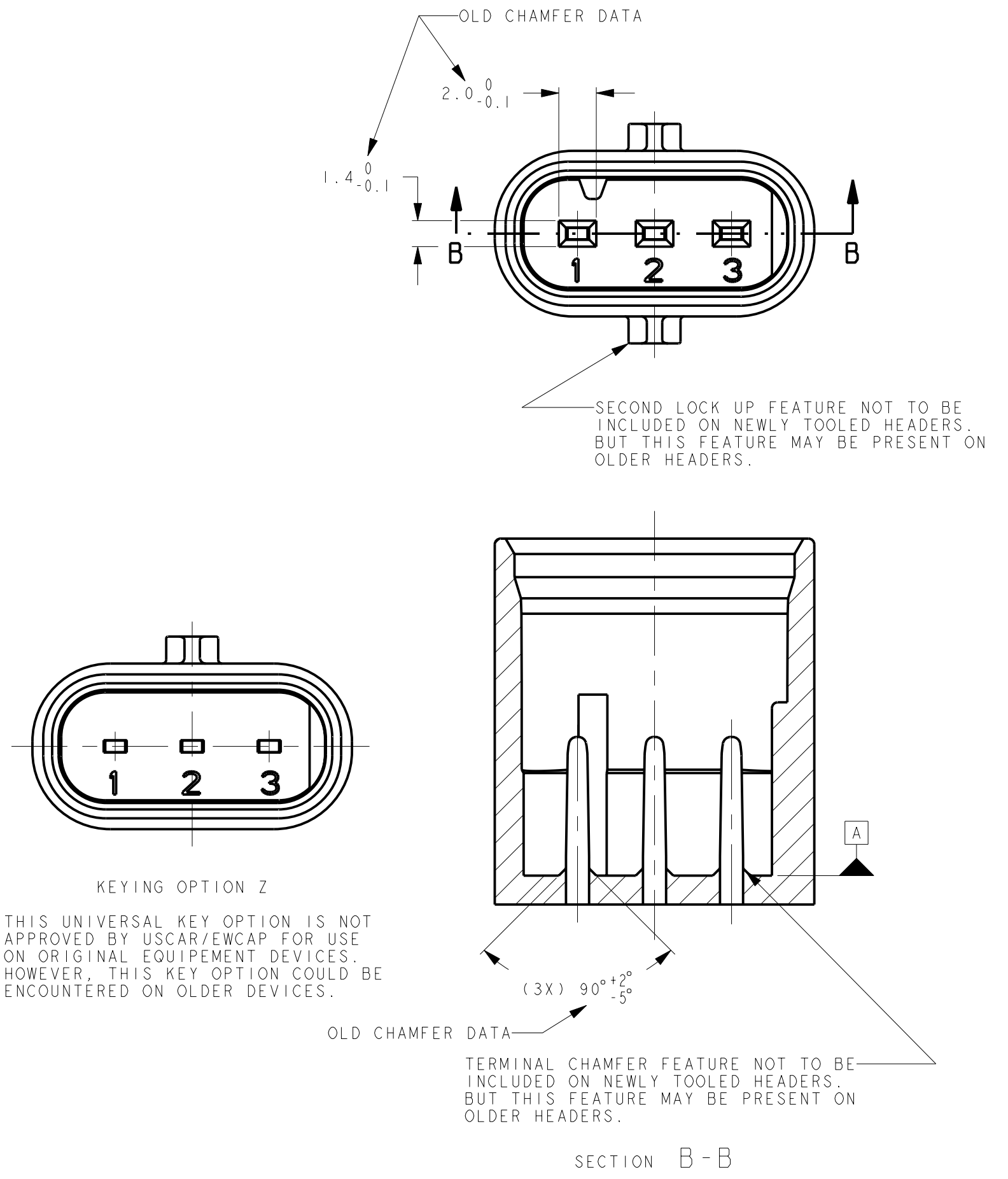
IF THE HEADER IS RECESSED INTO A POCKET, THESE DIMENSIONS REPRESENT THE MINIMUM CLEARANCE REQUIRED FOR THE MATING CONNECTOR SHROUD



LATCH CONSTRUCTION

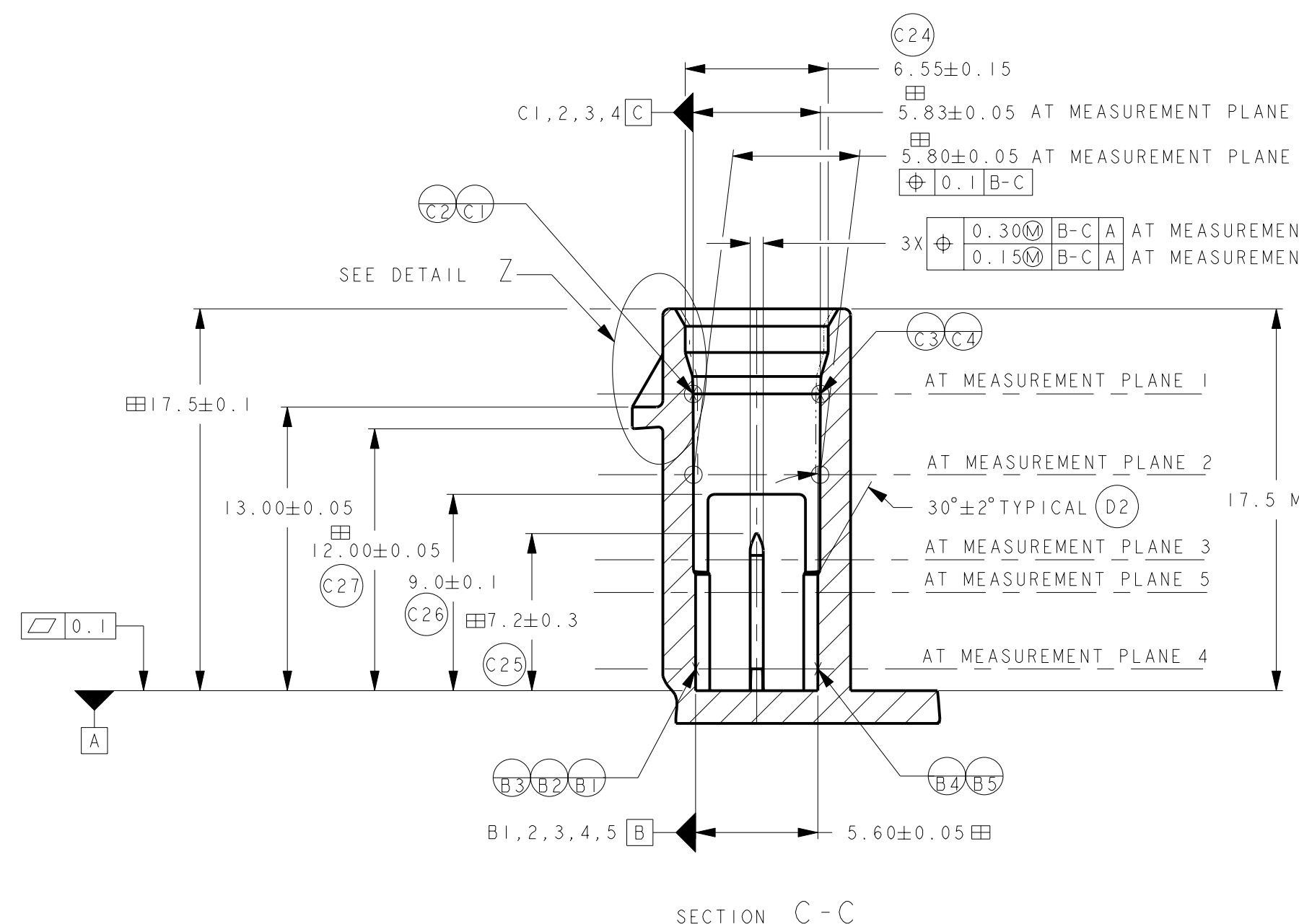


SCALE 2:1

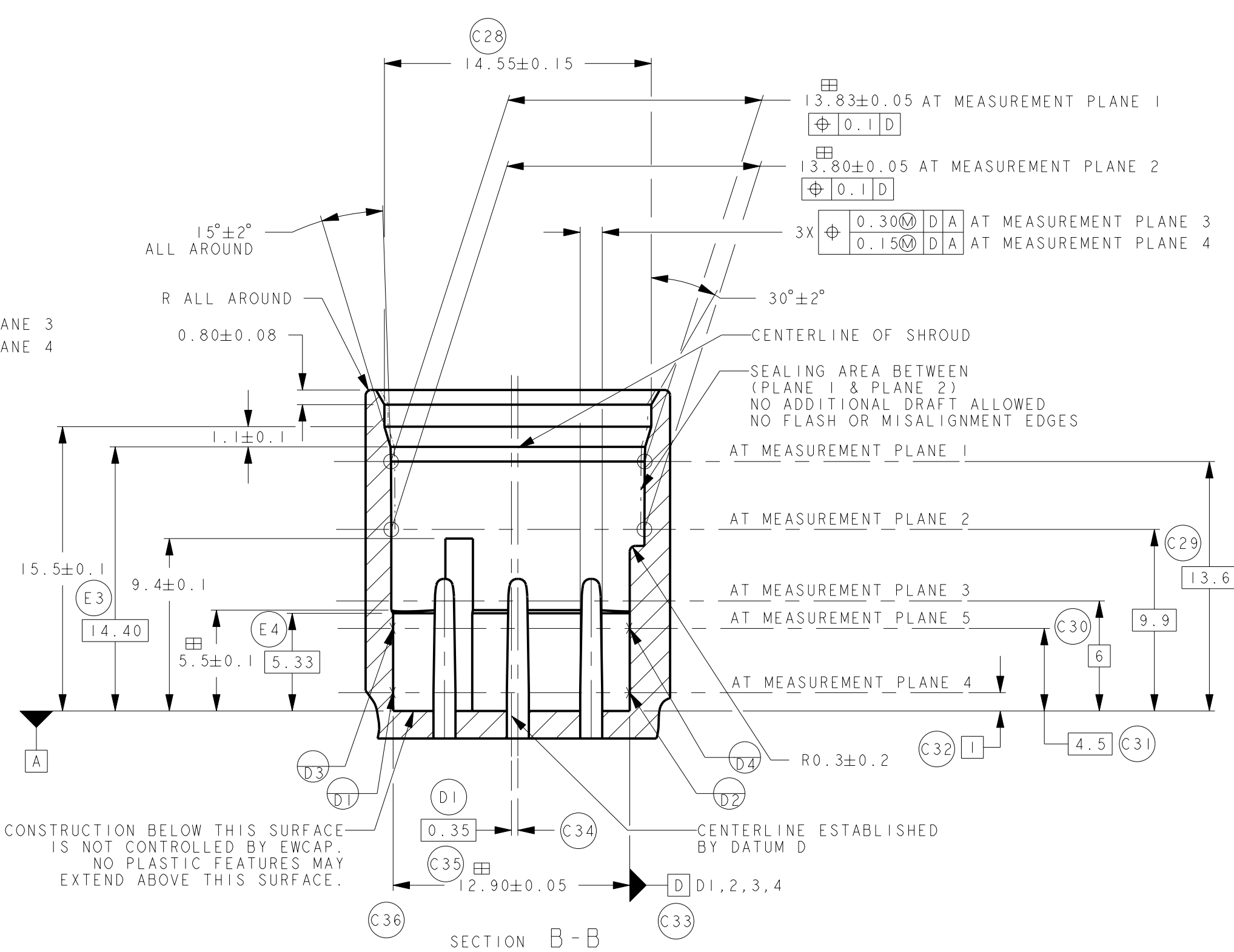


KEYING OPTION Z
THIS UNIVERSAL KEY OPTION IS NOT APPROVED BY USCAR/EWCAP FOR USE ON ORIGINAL EQUIPMENT DEVICES. HOWEVER, THIS KEY OPTION COULD BE ENCOUNTERED ON OLDER DEVICES.

PROVIDED FOR INFORMATIONAL PURPOSES ONLY



SECTION C-C



SECTION B-B

- NOTES:
- ALL DIMENSIONS SHOWN IN MILLIMETERS.
 - DIMENSIONING AND TOLERANCING PER ASME Y14.5M.
 - 0.25 RADII ON ALL CORNERS SHOWN SHARP.
 - ALL UNSPECIFIED RADII 0.25.
 - REFER TO "SAE/USCAR 12 CONNECTOR DESIGN CRITERIA" FOR ADDITIONAL REQUIREMENTS.
 - EXCEPT WHERE NOTED, DRAFT ON OUTSIDE SURFACES IS PERMISSIBLE WITHIN TOLERANCE.
 - SYMBOL INDICATES DRAFT DIRECTION.
 - FOR TERMINAL MATERIAL, DIMENSIONAL AND COATING REQUIREMENTS, SEE EWCAP 001 BLADE DRAWING.
 - TO CLAIM USCAR COMPLIANCE, PARTS DESIGNED AND PRODUCED TO THIS FOOTPRINT DRAWING MUST BE TESTED TO AND MEET THE REQUIREMENTS OF SAE/USCAR 2.
 - REVERSE DRAFT PERMISSIBLE IN LATCH DETAILS.
 - ⊞ DENOTES DIMENSION THAT MAY BE UTILIZED TO MONITOR PART QUALITY.
 - A FULL SHROUD ON THE MATING CONNECTOR IS REQUIRED TO INSURE THE CONNECTOR-HEADER POLARIZATION FEATURES (OPTIONS A THRU F) WILL FUNCTION. THE FULL SHROUD ALSO PREVENTS SCOOP DAMAGE TO THE HEADER PINS.
 - THIS PART HAS BEEN PREVIOUSLY DESIGNED AND TOOLED WITH THE DATUM REFERENCES AS SHOWN. THE DATUM REFERENCES USED ON THIS DRAWING TAKES PRECEDENCE OVER THE EWCAP DRAWING GUIDELINE DATUM REFERENCE REQUIREMENT.

| | | | | | |
|---|---|---|------------------------|----------------|-------------|
| 167 | E | E1 WAS (4X) R2.30±0.05 E2 WAS (4X) R2.50±0.05 E3 ADDED (1.4) E4 ADDED (5.33) | 08-16-23 | KV | SR |
| 105 | D | D1 SECTION B-B WAS BASIC 0.38 D2 ADDED TYPICAL SECTION C-C | 1-08-14 | JC | RCB |
| 098 | C | C1 WAS 3.20±0.05 C2 ADDED (0.1) D-B-C-A C3 WAS 1.40±0.05 C4 WAS 1.40±0.05 C5 WAS 3.20±0.05 C6 WAS Ø16.8 MIN CIRCLE C7 ADDED (17.50) C8 ADDED 1.00 MAX C9 REVISED DISCLAIMER NOTICE C10 WAS 2.8 0/-0.2 C11 ADDED (2X) R0.3 0/-0.3 C12 WAS 1.45 0/-0.1 C13 REMOVED TEST DEVICE Ø1.50±0.01 C14 REVISED DETAIL NAME C15 ADDED R0.2 0/-0.2 C16 WAS 87° 0/-2° C17 ADDED R0.3 0/-0.3 C18 ADDED (2X) R0.3 0/-0.3 C19 ADDED (2X) R0.2 0/-0.2 C20 WAS (4X) R2.5±0.5 C21 ADDED (0.1) C22 REMOVED (0.1) C23 WAS (4X) R2.8±0.1 C24 WAS 6.4 +0.3/0 (0.2) B C25 WAS 7.0±0.1 C26 REMOVED 10.5 +0.1/0 C27 WAS (11.95) C28 WAS 14.4 +0.3/0 (0.2) C C29 WAS (13.53) C30 WAS (1) C31 ADDED (4.5) C32 ADDED (1) C33 REMOVED 10.10 +0.05/0 C34 ADDED (0.38) C35 ADDED (2.30±0.05) C36 REMOVED (2.8) C37 REVISED NOTES | 01-03-14 | SR | MGM |
| 082 | B | ADDED KEYING OPTIONS E & F AND ADDED NOTE FOR CONSTRUCTION BELOW DATUM A | 05-18-10 | SR | FAH |
| - | A | RELEASED | 01-08-09 | SR | FAH |
| CHANGE SERIAL NUMBER | LET | REVISION RECORD | DATE | DWN | CHK |
| TOLERANCES (UNLESS OTHERWISE SPECIFIED) DIMENSIONS ARE IN MILLIMETERS ANGLES ± 2° X.X ± 0.25 X.XX ± 0.10 | | | | | |
| EWCAP | | | | | |
| SCALE | 5:1 | DRAWN BY | RANGARAJAN | CHECKED BY | FRANK HOLUB |
| TITLE | DIRECT CONNECT INTERFACE 3 WAY (1 X 3) 1.2MM SEALED MALE | | | | |
| SHEET | DRAWING NUMBER | SIZE | DO NOT SCALE DRAWING | REVISION LEVEL | |
| 1 of 1 | 120-S-003-1-202 | E | COMPUTER AIDED DRAWING | E | |



35467832