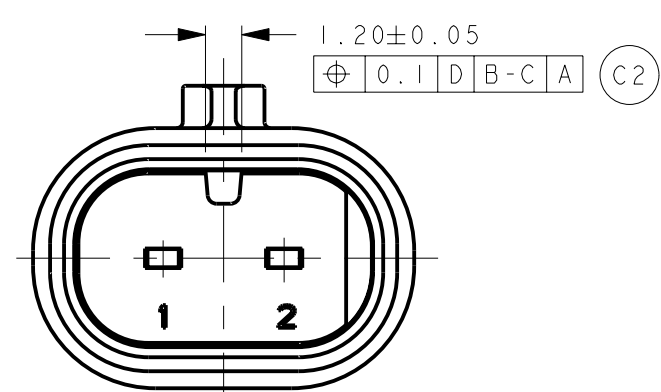
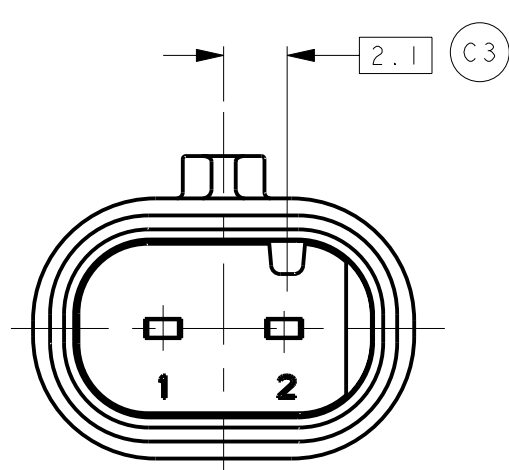


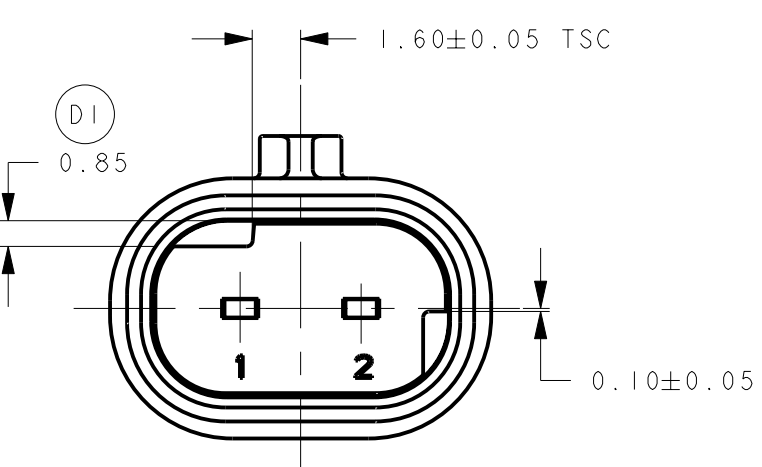
KEYING OPTION A



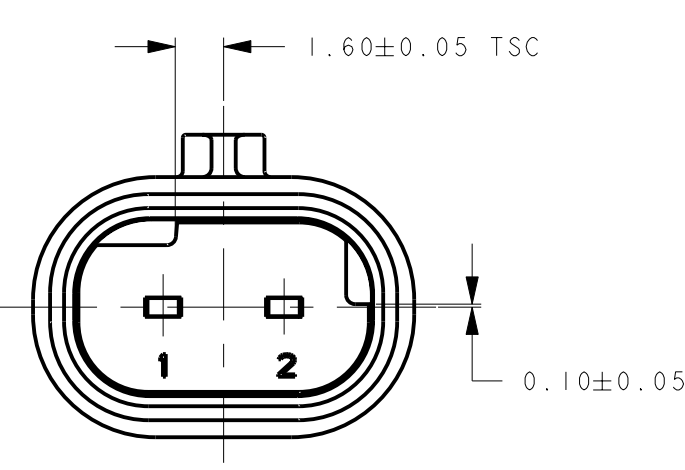
KEYING OPTION B



KEYING OPTION C

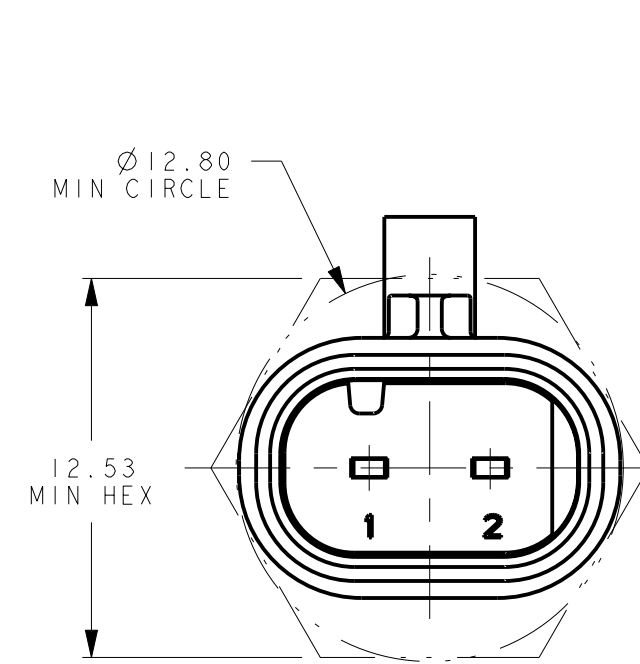


KEYING OPTION E

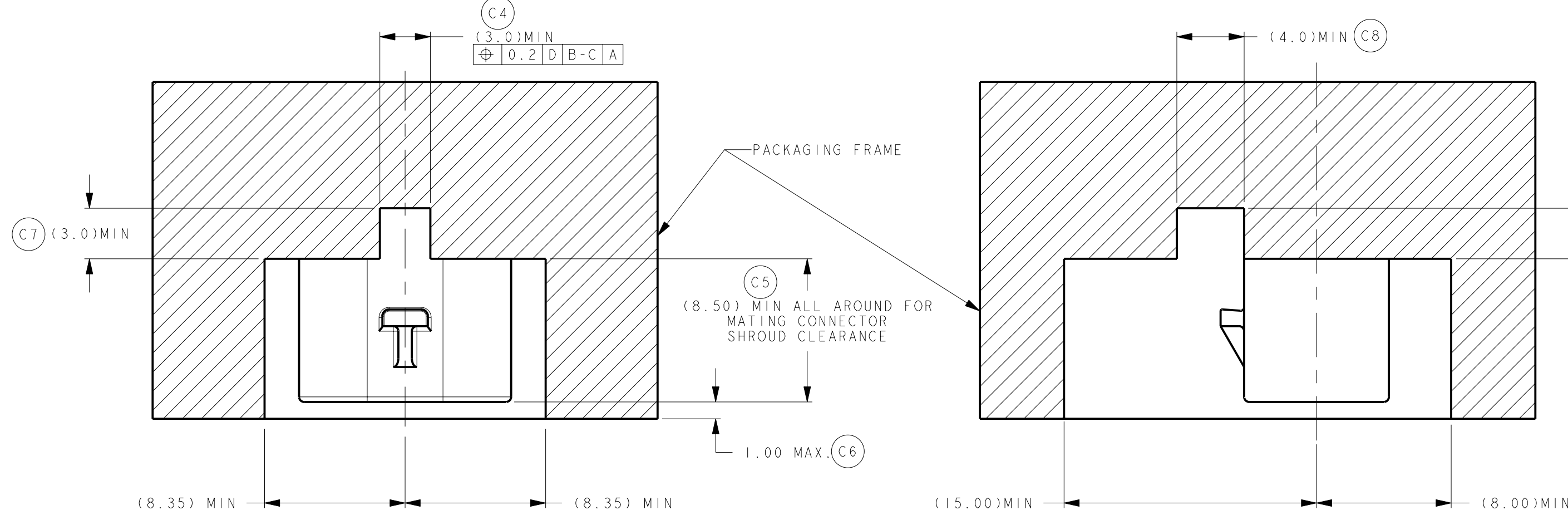


KEYING OPTION F

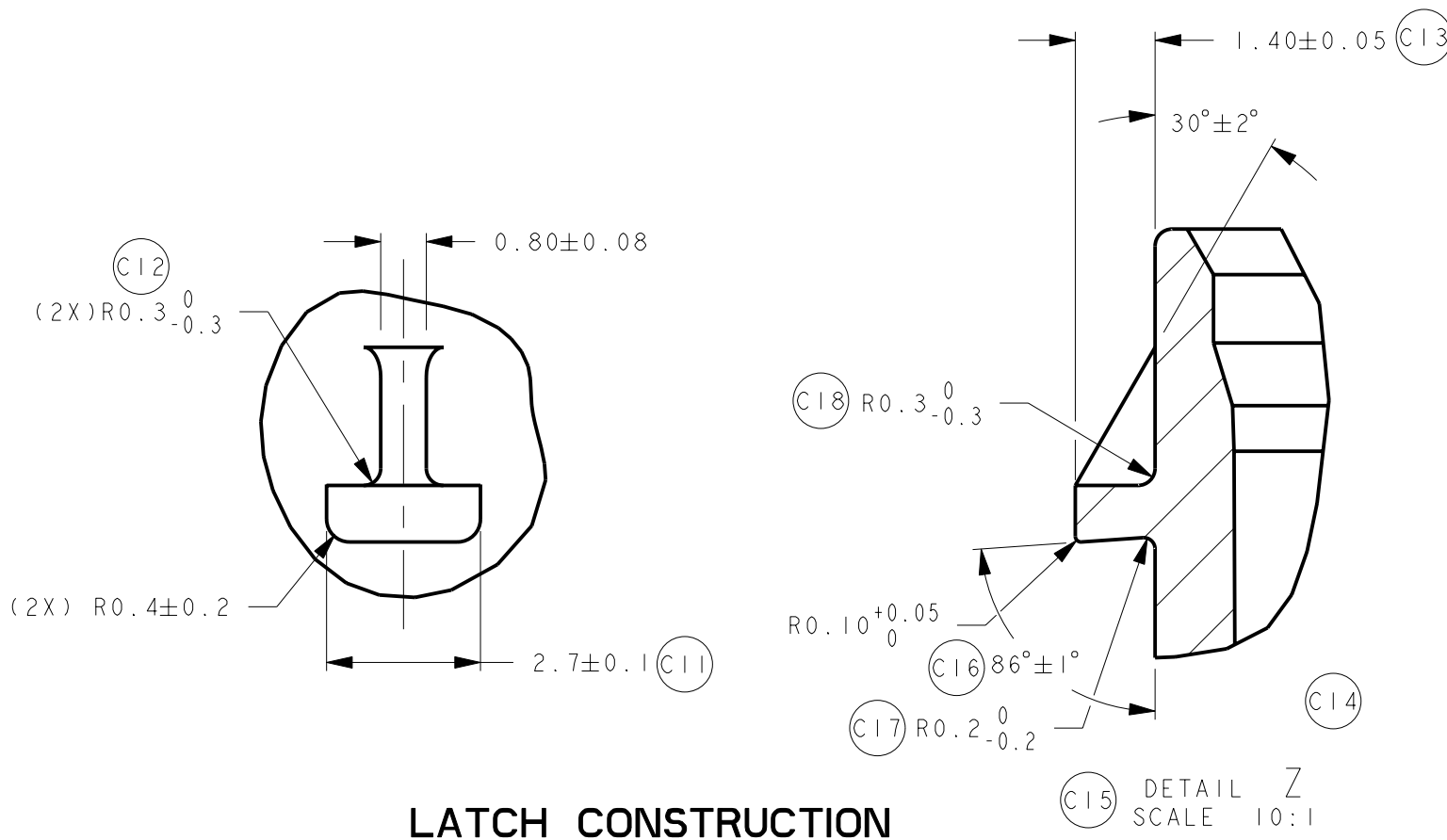
POLARIZATION VIEWS



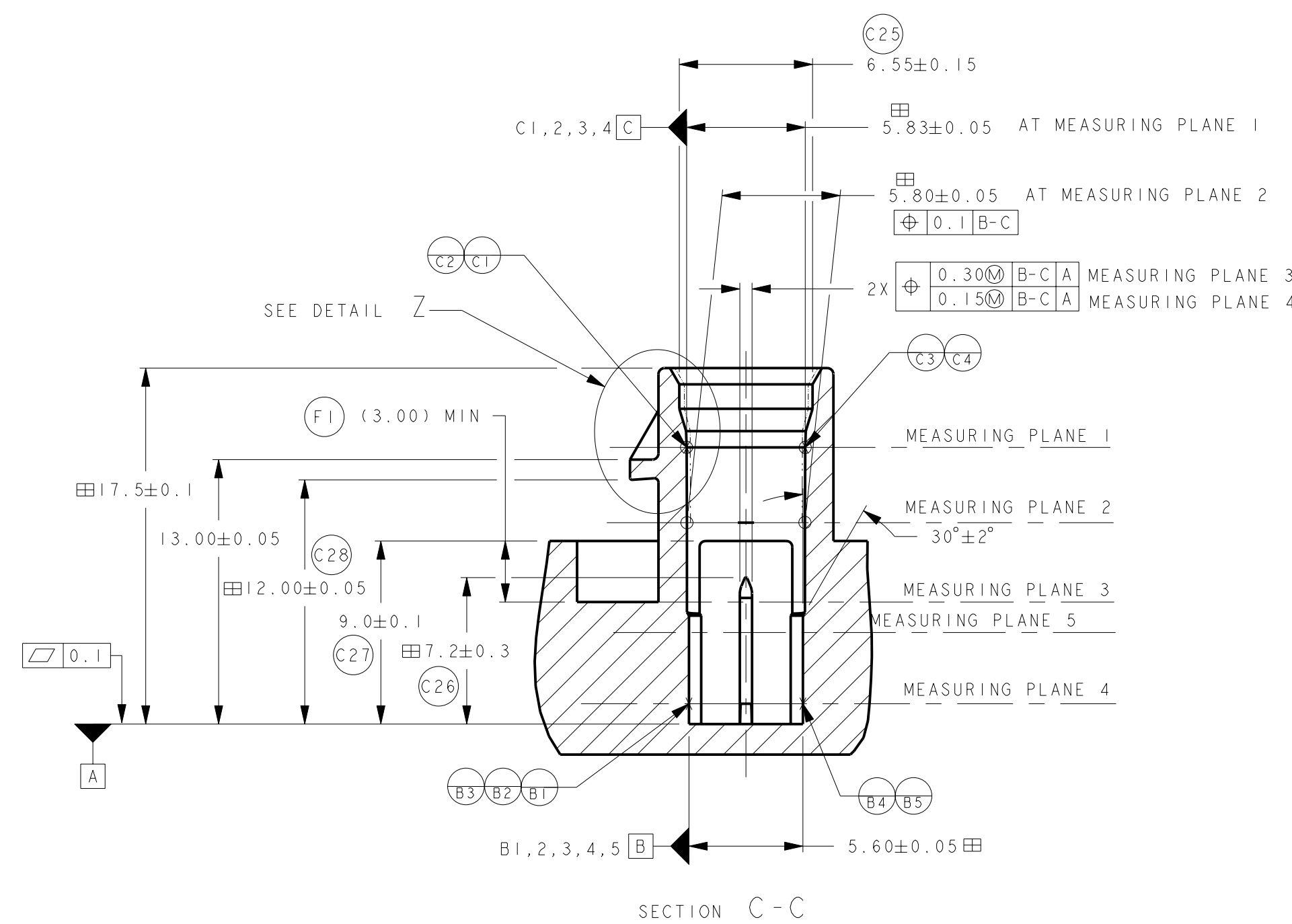
MINIMUM FIT SIZE - PROVIDED FOR INFORMATIONAL PURPOSES ONLY (BASED ON MAXIMUM MATERIAL CONDITION)



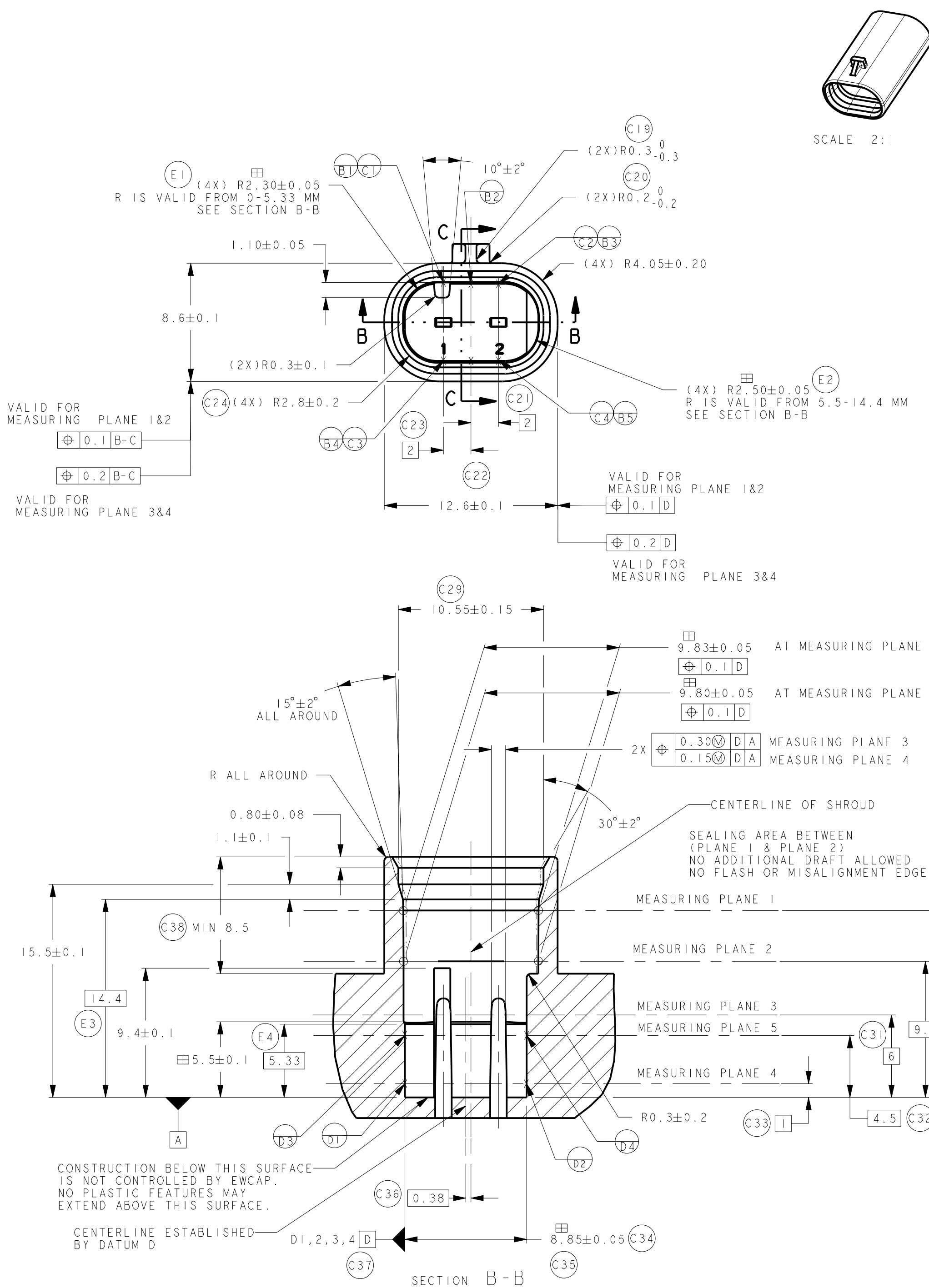
IF THE HEADER IS RECESSED INTO A POCKET, THESE DIMENSIONS REPRESENT THE MINIMUM CLEARANCE REQUIRED FOR THE MATING CONNECTOR SHROUD



LATCH CONSTRUCTION



SECTION C-C



SECTION B-B

- NOTES:
- ALL DIMENSIONS SHOWN IN MILLIMETERS.
 - DIMENSIONING AND TOLERANCING PER ASME Y14.5M.
 - 0.25 RADIUS ON ALL CORNERS SHOWN SHARP.
 - ALL UNSPECIFIED RADIUS 0.25.
 - REFER TO "SAE/USCAR 12 CONNECTOR DESIGN CRITERIA" FOR ADDITIONAL REQUIREMENTS.
 - EXCEPT WHERE NOTED, DRAFT ON OUTSIDE SURFACES IS PERMISSIBLE WITHIN TOLERANCE.
 - SYMBOL INDICATES DRAFT DIRECTION.
 - FOR TERMINAL MATERIAL, DIMENSIONAL AND COATING REQUIREMENTS, SEE EWCAP 001 BLADE DRAWING.
 - TO CLAIM USCAR COMPLIANCE, PARTS DESIGNED AND PRODUCED TO THIS FOOTPRINT DRAWING MUST BE TESTED TO AND MEET THE REQUIREMENTS OF SAE/USCAR 2.
 - REVERSE DRAFT PERMISSIBLE IN LATCH DETAILS.
 - DENOTES DIMENSION THAT MAY BE UTILIZED TO MONITOR PART QUALITY.
 - A FULL SHROUD ON THE MATING CONNECTOR IS REQUIRED TO INSURE THE CONNECTOR-HEADER POLARIZATION FEATURES (OPTIONS A THRU F) WILL FUNCTION. THE FULL SHROUD ALSO PREVENTS SCOOP DAMAGE TO THE HEADER PINS.
 - THIS PART HAS BEEN PREVIOUSLY DESIGNED AND TOOLED WITH THE DATUM REFERENCES AS SHOWN. THE DATUM REFERENCES USED ON THIS DRAWING TAKES PRECEDENCE OVER THE EWCAP DRAWING GUIDELINE DATUM REFERENCE REQUIREMENT.

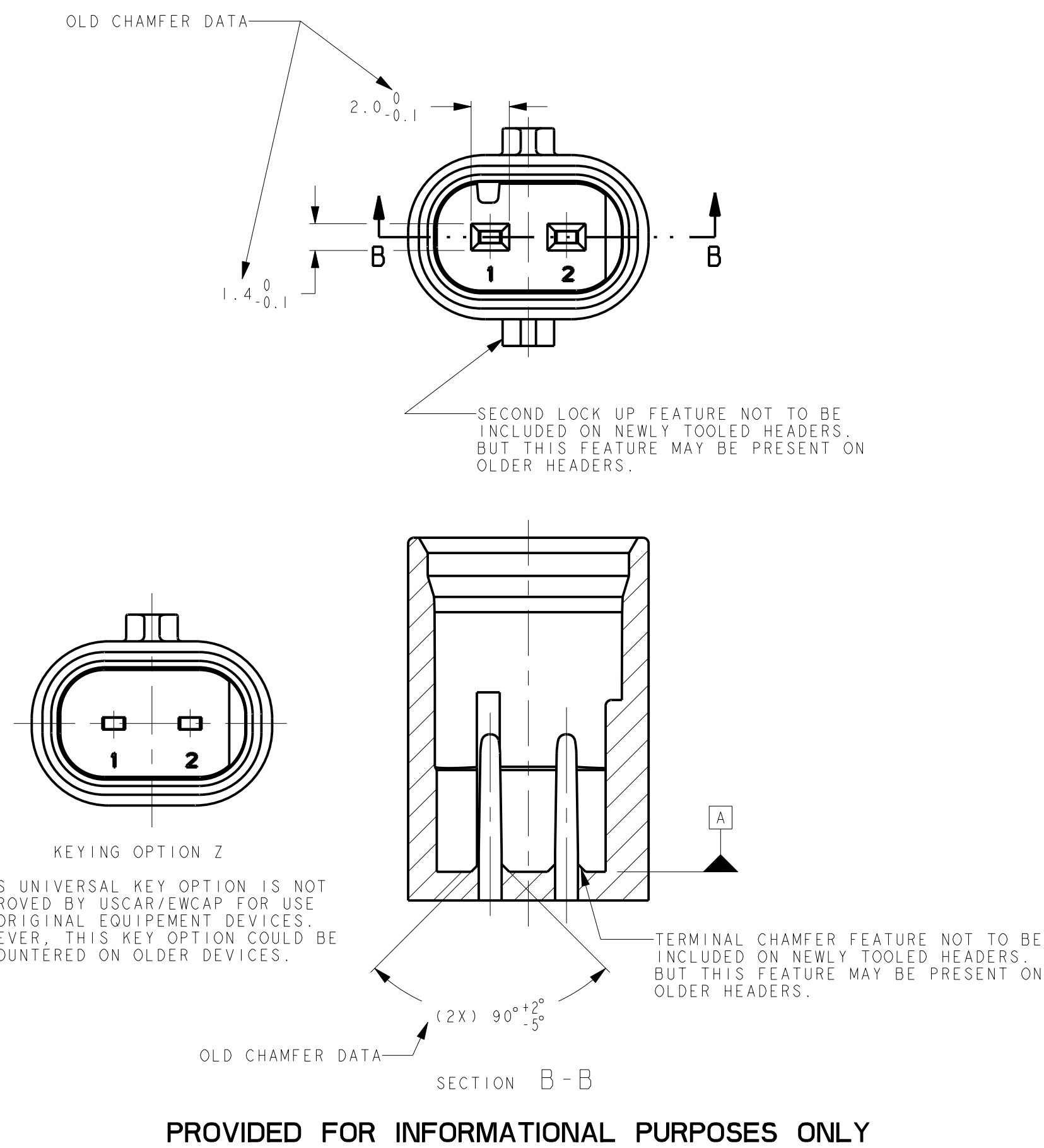
NOTICE

THIS DRAWING OR PORTIONS OF IT ARE CONTROLLED BY THE ELECTRICAL WIRING COMPONENTS APPLICATION PARTNERSHIP (EWCAP), A SUBGROUP OF THE UNITED STATES COUNSEL FOR AUTOMOTIVE RESEARCH LLC (USCAR LLC).

USCAR IS AN LLC CONSISTING OF MEMBERS FROM CHRYSLER GROUP, FORD MOTOR COMPANY AND GM COMPANY.


ANY CHANGE TO A EWCAP CONTROLLED PORTION OF THIS DRAWING, INCLUDING A REVISION RECORD CHANGE MUST BE APPROVED, IN WRITING, BY THE RESPONSIBLE EWCAP REPRESENTATIVE FROM EACH USCAR MEMBER COMPANY. EACH EWCAP REPRESENTATIVE AUTHORIZED TO SIGN FOR HIS OR HER MEMBER COMPANY IS RESPONSIBLE FOR OBTAINING ALL NECESSARY APPROVALS WITHIN THAT COMPANY PRIOR TO SIGNING FOR THE APPROVAL OF THE CHANGE.

EWCAP EXPRESSLY PROHIBITS ANY PARTY FROM CHANGING EITHER ANY EWCAP CONTROLLED PORTION OF THIS DRAWING OR ANY ASSOCIATED TOOLING BEFORE RECEIVING APPROVAL. APPROVAL MUST BE OBTAINED FROM THE AUTHORIZED REPRESENTATIVES OF THE USCAR MEMBER COMPANIES. REFERENCE TO THE SIGNED CHANGE NOTICE MUST BE ENTERED IN THE DRAWING CONTROL COLUMN.



KEYING OPTION Z

176	F	F1	ADDED (3.00) MIN	08-16-23	KV	SR
167	E	E1	WAS (4X) R2.30±0.05	08-16-23	KV	SR
		E2	WAS (4X) R2.50±0.05			
		E3	ADDED (1.4) D			
		E4	ADDED (5.33)			
164	D	D1	ADDED 0.85	08-16-23	KV	SR
		C1	WAS 2.10±0.05			
		C2	WAS (0.05) C			
		C3	WAS 2.10±0.05			
		C4	WAS (3.0)			
		C5	ADDED (8.50)			
		C6	ADDED 1.00 MAX			
		C7	WAS (3.0)			
		C8	WAS (4.0)			
		C9	WAS (3.0)			
		C10	REVISED DISCLAIMER NOTICE			
		C11	WAS 2.8 0/-0.2			
		C12	ADDED (2X) R0.3 0/-0.3			
		C13	WAS 1.45 0/-0.10			
		C14	REMOVED TEST DEVICE Ø1.50±0.01			
		C15	REVISED DETAIL NAME			
		C16	WAS 8 0/-2			
		C17	ADDED R0.2 0/-0.2			
		C18	ADDED R0.3 0/-0.3			
		C19	ADDED (2X) R0.3 0/-0.3			
		C20	ADDED (2X) R0.2 0/-0.2			
		C21	ADDED (2)			
		C22	REMOVED (2)			
		C23	ADDED (2)			
		C24	WAS (4X) R2.8±0.1			
		C25	WAS 6.4 ±0.3/0 (0.2 B)			
		C26	WAS 7.0±0.1			
		C27	REMOVED 10.5±0.1/0			
		C28	WAS (11.95)			
		C29	WAS 10.4 ±0.3/0 (0.2 C)			
		C30	WAS (3.55)			
		C31	WAS (1)			
		C32	ADDED (4.5)			
		C33	ADDED (1)			
		C34	ADDED 8.85±0.05			
		C35	REMOVED 6.05 ±0.05/0			
		C36	ADDED (0.38)			
		C37	REMOVED (2.8)			
		C38	WAS MIN. 8.4			
		C39	REVISED NOTES			
082	B		ADDED KEYING OPTIONS E & F AND ADDED NOTE FOR CONSTRUCTION BELOW DATUM A	05-18-10	SR	FAH
-	A		RELEASED	01-08-09	SR	FAH
CHANGE SERIAL NUMBER	LET		REVISION RECORD	DATE	DWN	CHK

TOLERANCES (UNLESS OTHERWISE SPECIFIED) DIMENSIONS ARE IN MILLIMETERS				THIRD ANGLE PROJECTION	
ANGLES ± 2°					
X.X ± 0.25		X.XX ± 0.10			
EWCAP					
SCALE	5:1	DRAWN BY	RANGARAJAN	CHECKED BY	FRANK HOLUB
				DATE 11-19-08	
DIRECT CONNECT INTERFACE 2 WAY (1 X 2) 1.2MM SEALED MALE					
SHEET	DRAWING NUMBER		SIZE	DO NOT SCALE DRAWING	REVISION LEVEL
1 of 1	120-S-002-1-Z01		E	COMPUTER AIDED DRAWING	F



35467829