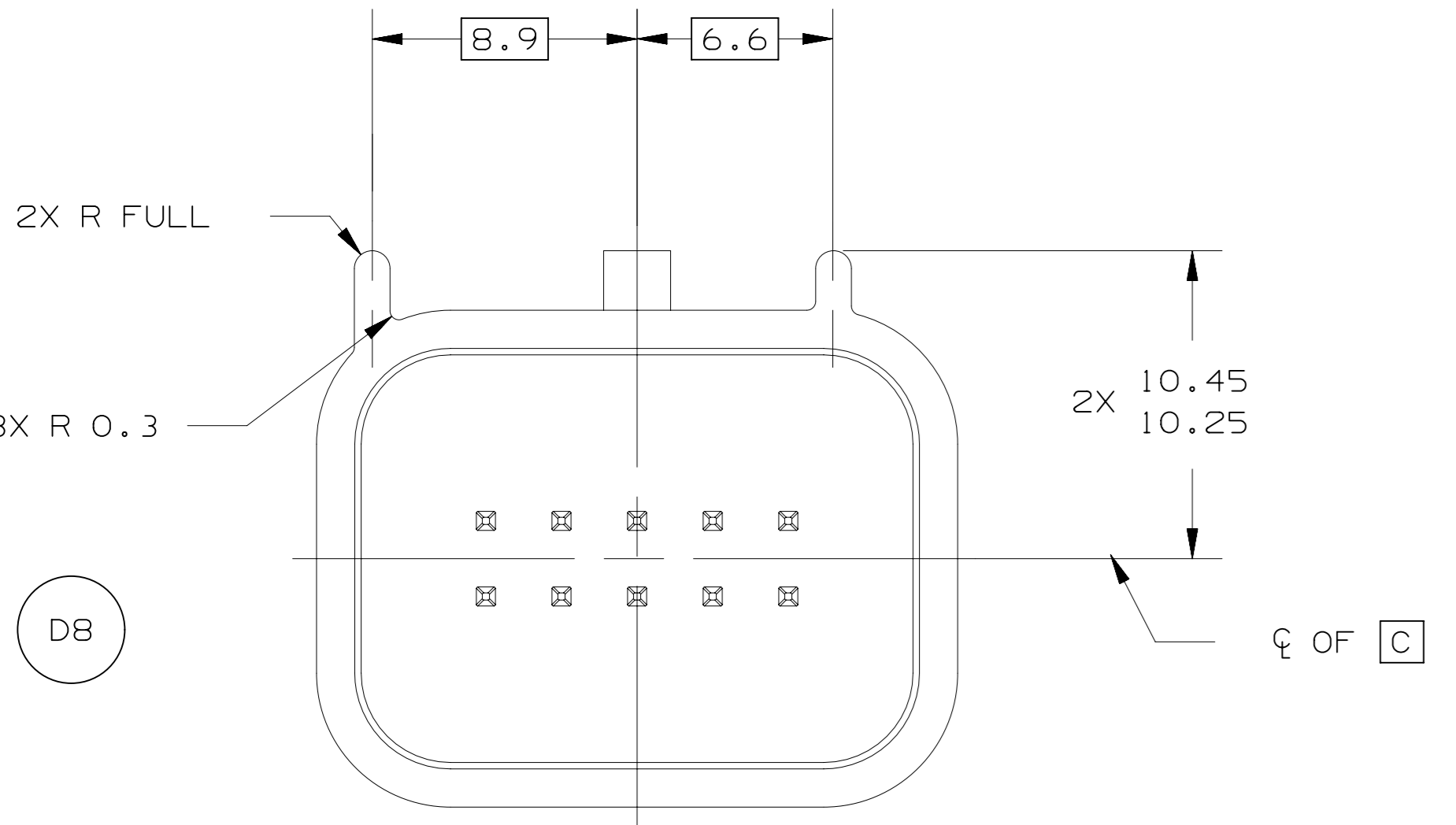
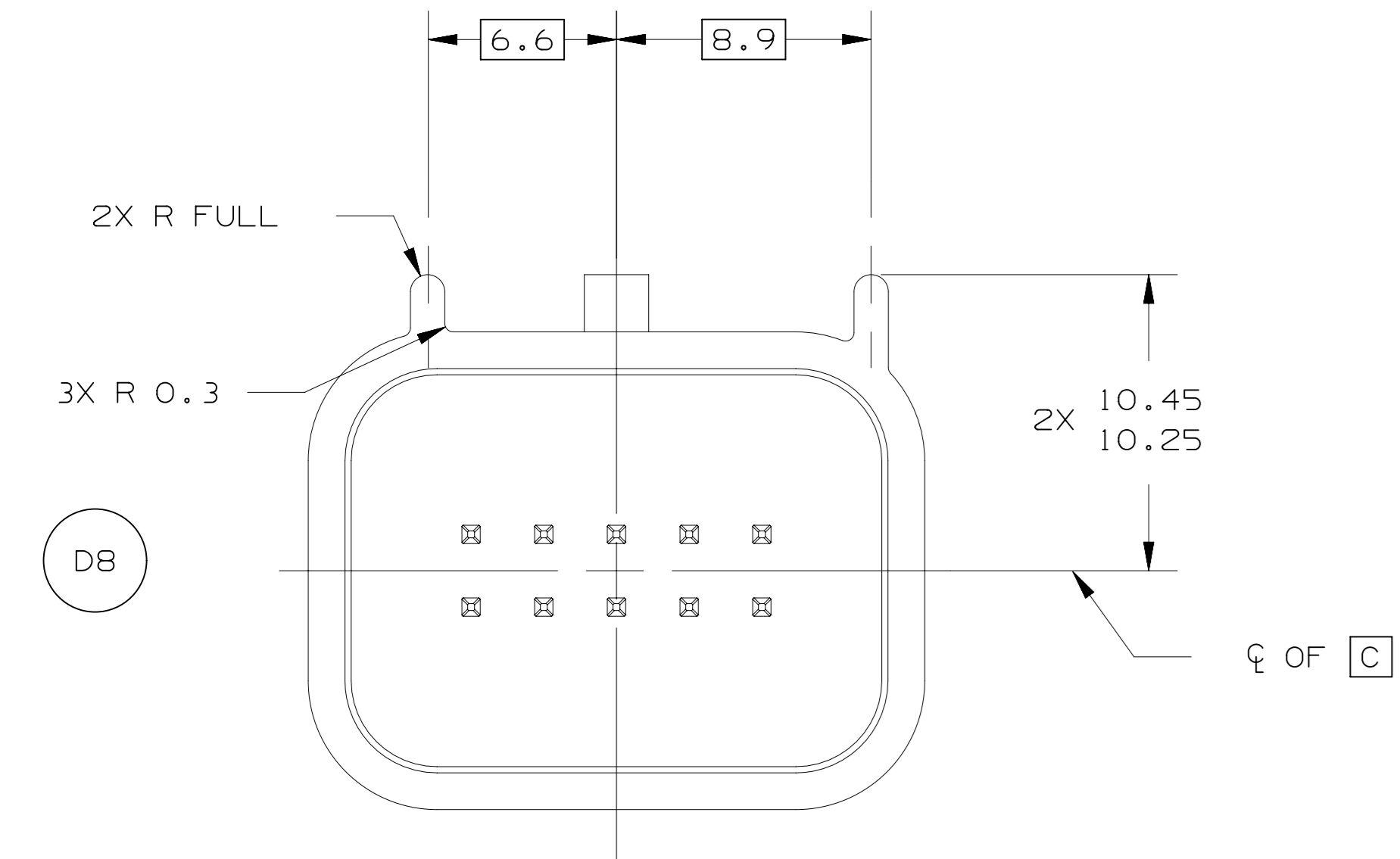


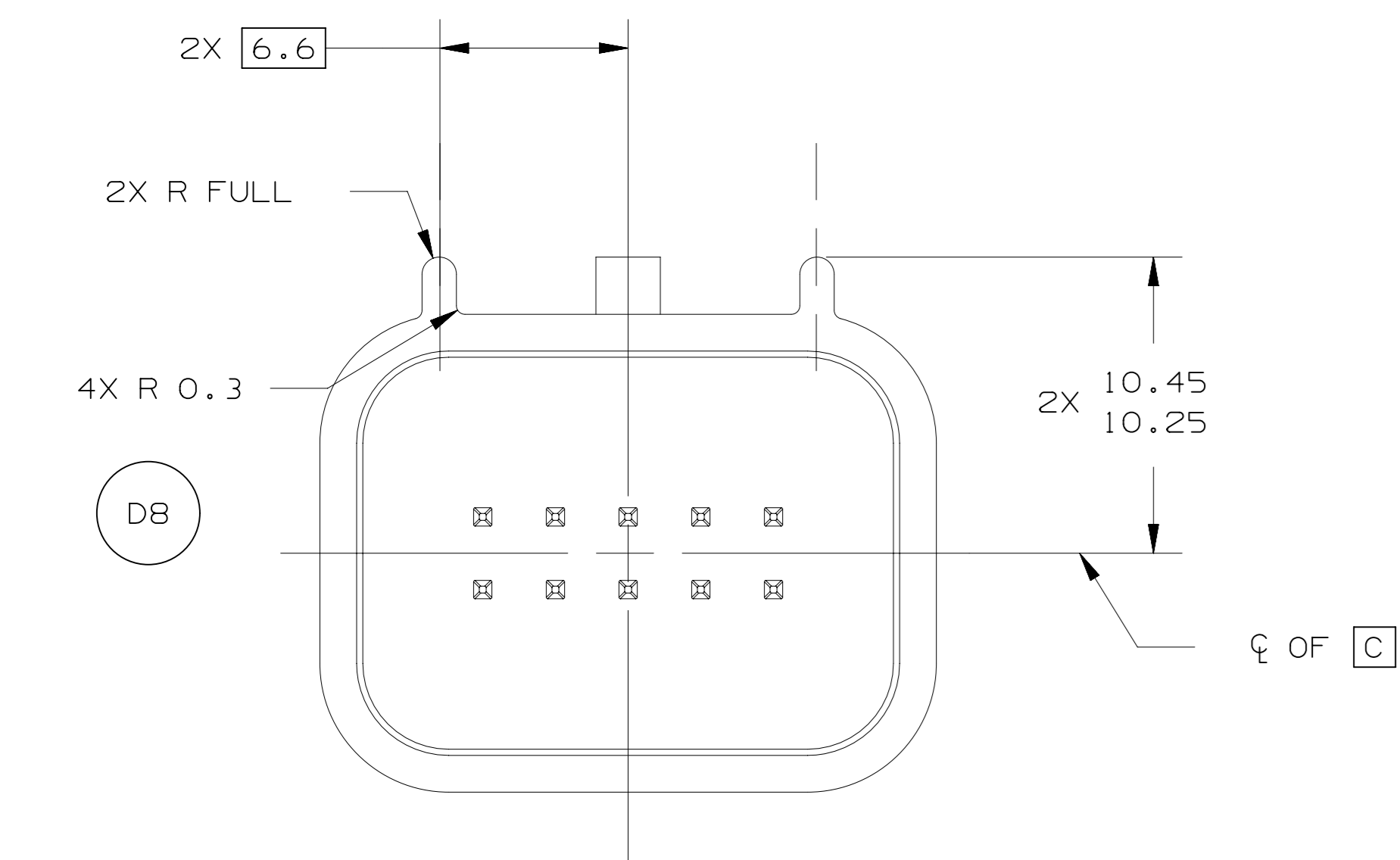
064-S-010-2-A01
(OPTION A)



064-S-010-2-B01
(OPTION B)



064-S-010-2-C01
(OPTION C)

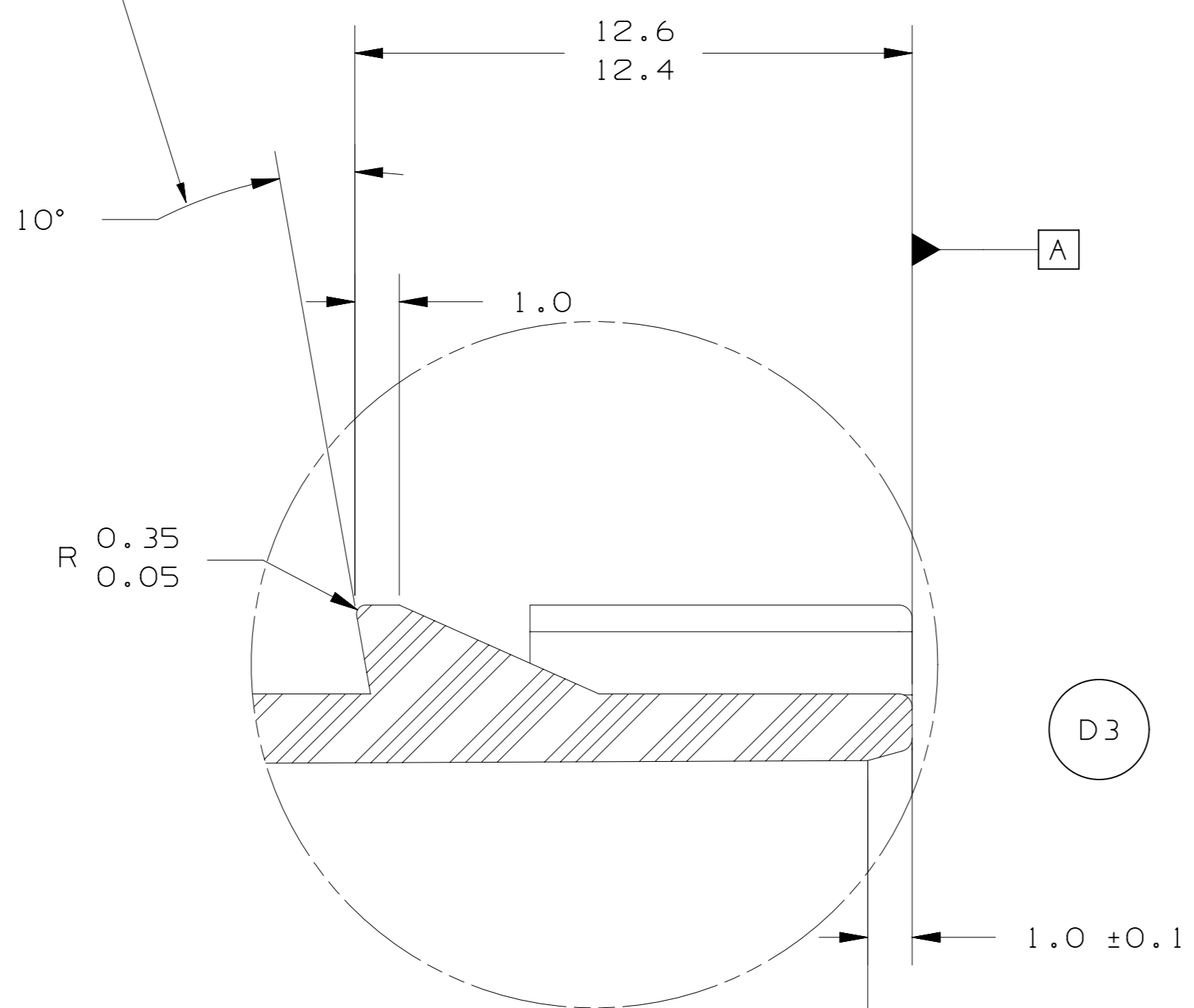


064-S-010-2-D01
(OPTION D1)

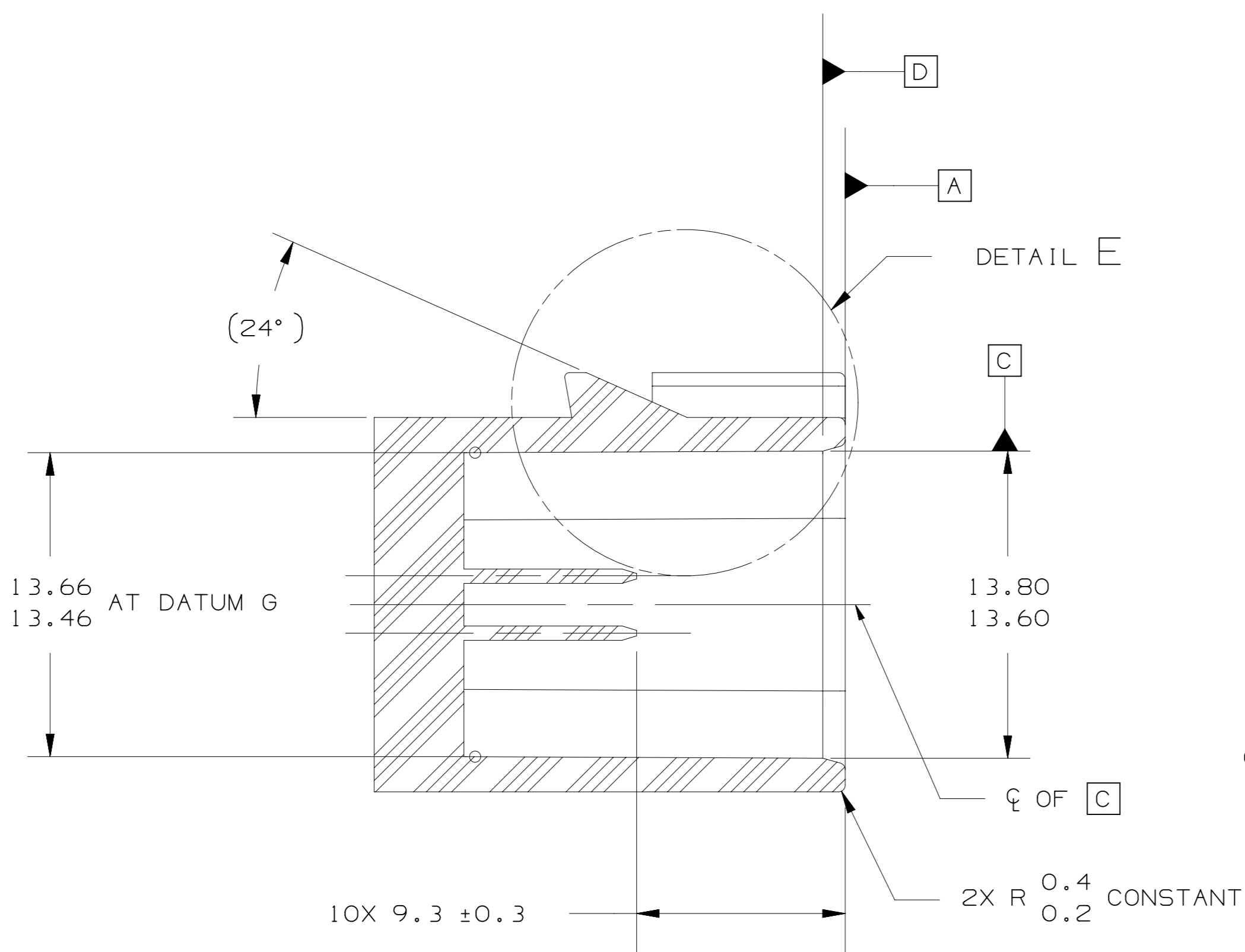
064-S-010-2-D01	D	GREEN
064-S-010-2-C01	C	BROWN
064-S-010-2-B01	B	GREY
064-S-010-2-A01	A	BLACK
EWCAP P/N	OPTION	MATING CONNECTOR COLOR

F1

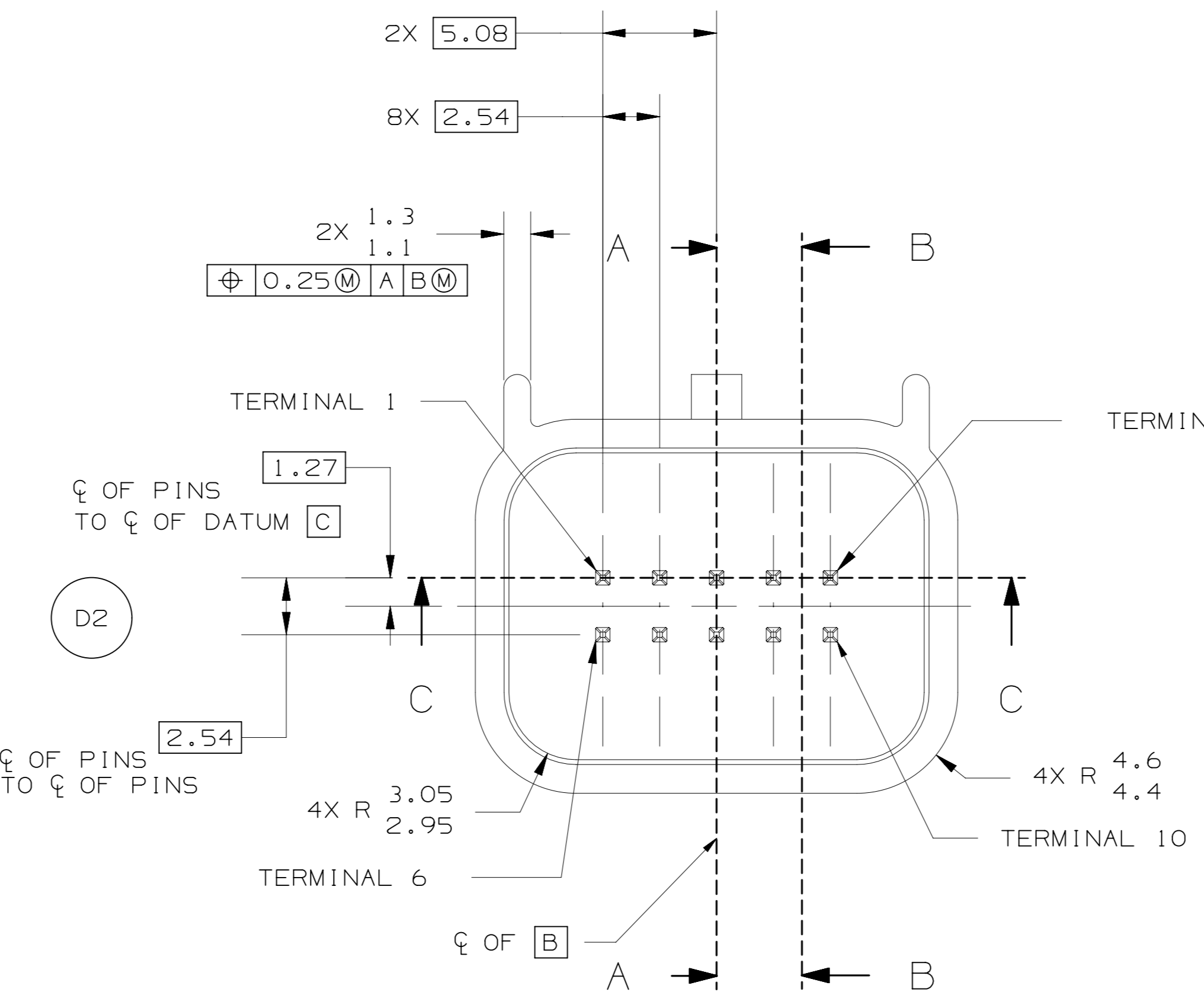
ELIMINATION OF BACK ANGLE
REQUIRES APPROVAL OF
RESPONSIBLE ENGINEER



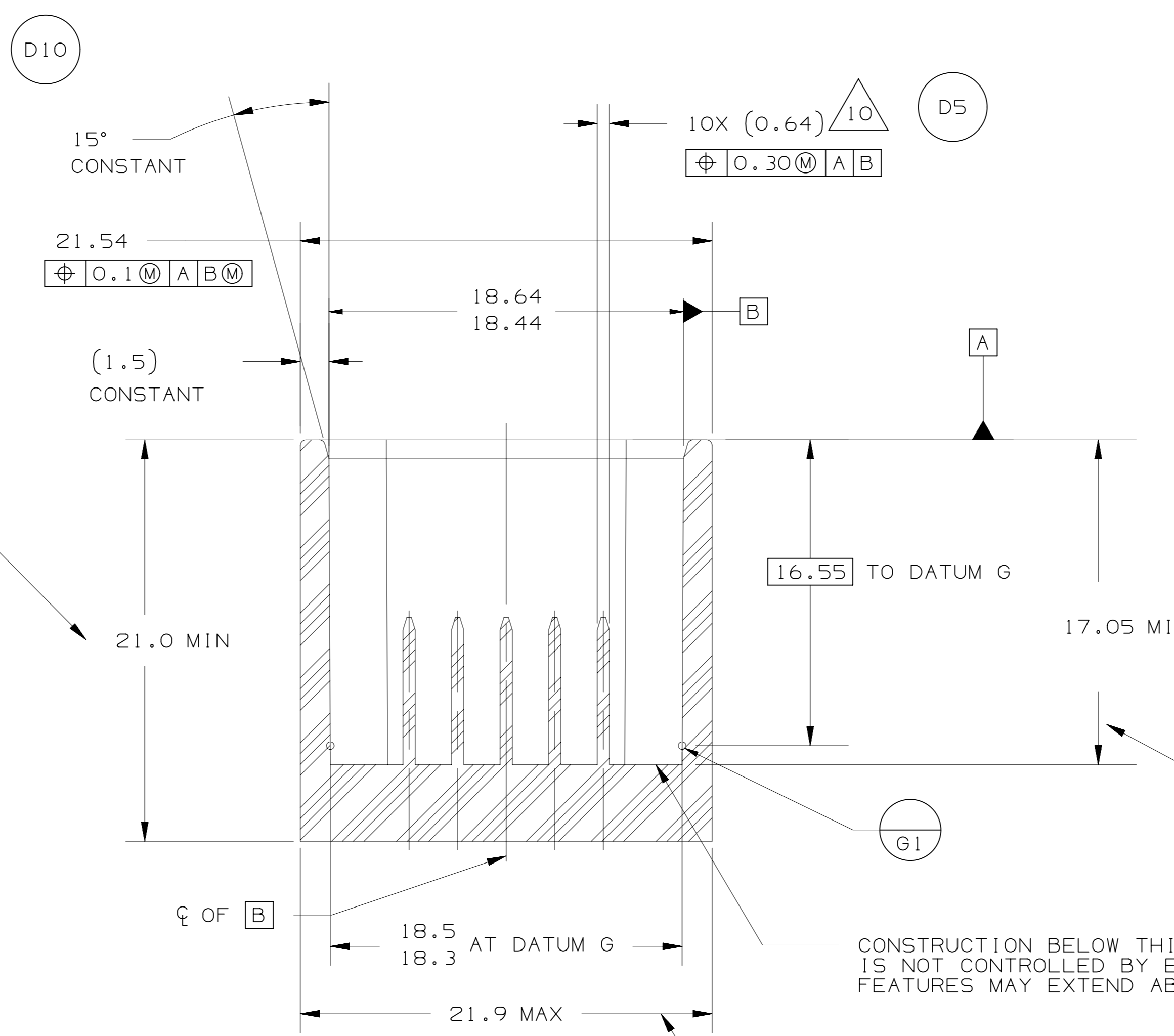
DETAIL E
SCALE B:1



SECTION A - A



OPTION A SHOWN



SECTION C - C

CONSTRUCTION BELOW THIS SURFACE
IS NOT CONTROLLED BY EWCAP. NO PLASTIC
FEATURES MAY EXTEND ABOVE THIS SURFACE

MINIMUM CLEARANCE REQUIRED ON
OUTSIDE SURFACE OF HEADER FOR
MATING CONNECTOR SHROUD

15°

(1.5)

21.54

18.64

18.44

18.5

18.3

21.9

21.0

17.05

16.55

15°

(1.5)

21.54

18.64

18.44

18.5

18.3

21.9

21.0

17.05

16.55

15°

(1.5)

21.54

18.64

18.44

18.5

18.3

21.9

21.0

17.05

16.55

15°

(1.5)

21.54

18.64

18.44

18.5

18.3

21.9

21.0

17.05

16.55

15°

(1.5)

21.54

18.64

18.44

18.5

18.3

21.9

21.0

17.05

16.55

15°

(1.5)

21.54

18.64

18.44

18.5

18.3

21.9

21.0

17.05

16.55

15°

(1.5)

21.54

18.64

18.44

18.5

18.3

21.9

21.0

17.05

16.55

15°

(1.5)

21.54

18.64

18.44

18.5

18.3

21.9

21.0

17.05

16.55

15°

(1.5)

21.54

18.64

18.44

18.5

18.3

21.9

21.0

17.05

16.55

15°

(1.5)

21.54

18.64

18.44

18.5

18.3

21.9

21.0

17.05

16.55

15°

(1.5)

21.54

18.64

18.44

18.5

18.3

21.9

21.0

17.05

16.55

15°

(1.5)

21.54

18.64

18.44

18.5

18.3

21.9

21.0

17.05

16.55

15°

(1.5)

21.54

18.64

18.44

18.5

18.3

21.9

21.0

17.05

16.55

15°

(1.5)

21.54

18.64

18.44

18.5

18.3

21.9

21.0

17.05

16.55

15°

(1.5)

21.54

18.64

18.44

18.5

18.3

21.9

21.0

17.05

16.55

15°

(1.5)

21.54

18.64

18.44

18.5

18.3

21.9

21.0

17.05

16.55

15°

(1.5)

21.54

18.64

18.44

18.5

18.3

21.9

21.0

17.05

16.55

15°

(1.5)

21.54

18.64

18.44

18.5

18.3

21.9

21.0

17.05

16.55

15°

(1.5)

21.54

18.64

18.44

18.5

18.3

21.9

21.0

17.05

16.55

15°

(1.5)

21.54

18.64

18.44

18.5

18.3

21.9

21.0

17.05

16.55

15°

(1.5)

21.54

18.64

18.44

18.5

18.3

21.9

21.0

17.05

16.55

15°

(1.5)

21.54

18.64

18.44

18.5

18.3

21.9

21.0

17.05

16.55

15°

(1.5)

21.54

18.64

18.44

18.5

18.3

21.9

21.0

17.05

16.55

15°

(1.5)

21.54

18.64

18.44

18.5

18.3

21.9

21.0

17.05

16.55

15°

(1.5)

21.54

18.64

18.44

18.5

18.3

21.9

21.0

17.05

16.55

15°

(1.5)

21.54

18.64

18.44

18.5

18.3

21.9

21.0

17.05

16.55

15°

(1.5)

21.54

18.64

18.44

18.5

18.3

21.9

21.0

17.05

16.55

15°

(1.5)

21.54

18.64

18.44

18.5

18.3

21.9

21.0

17.05

16.55

15°

(1.5)

21.54

18.64