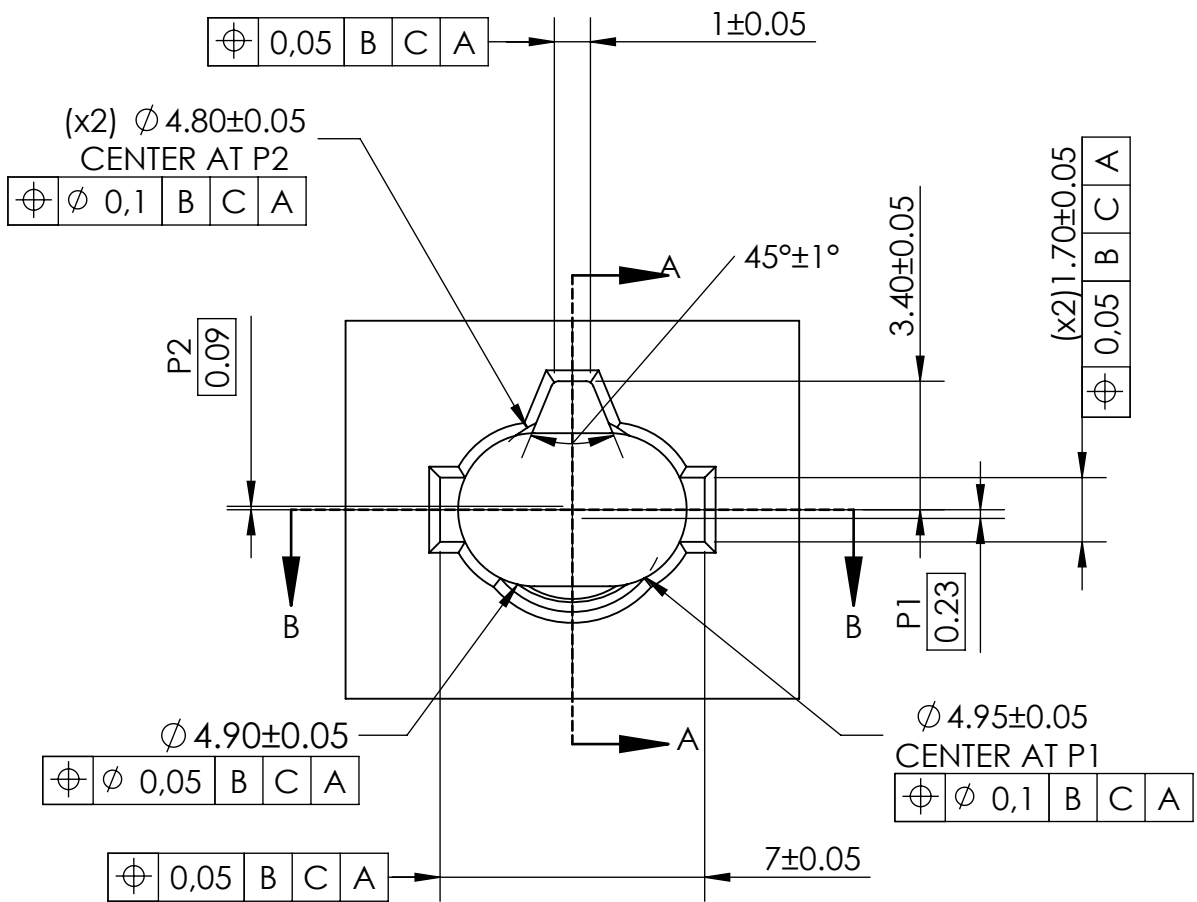
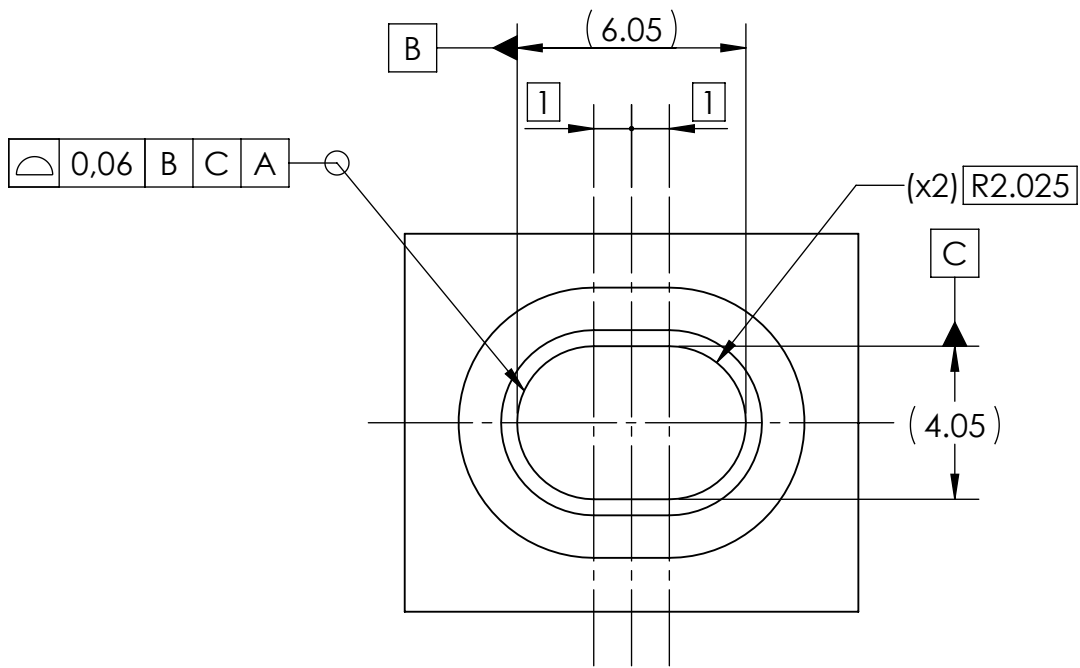
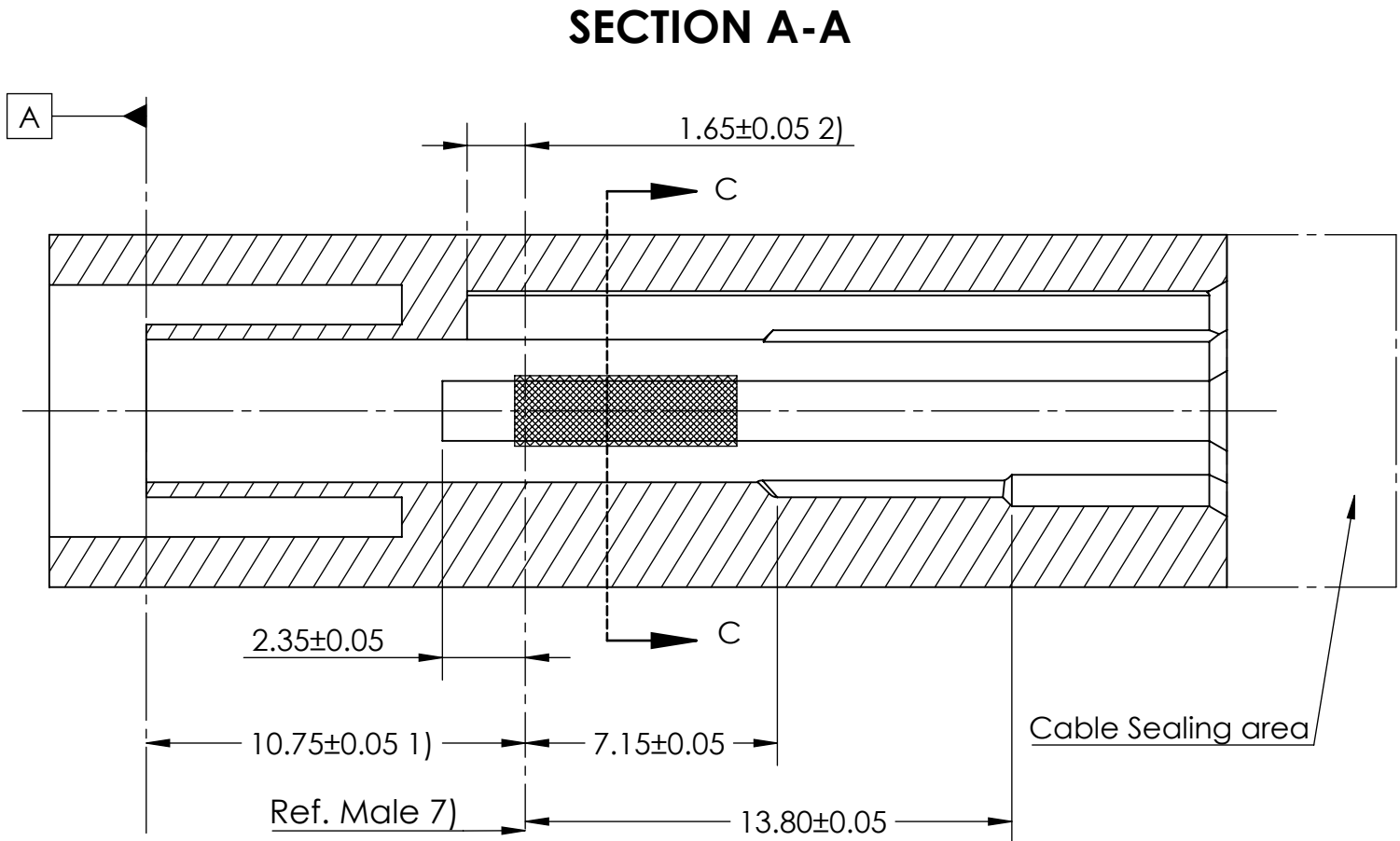
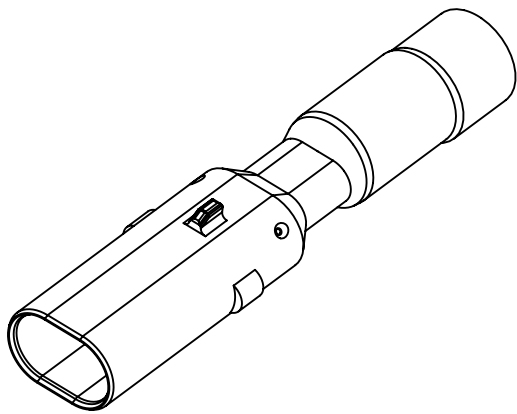


NOTICE:  
This drawing, or portions of it are controlled by the Electrical Wiring Components Application Partnership(EWCAP ) a subgroup of the United States Council for Automotive Research LLC (USCAR LLC).

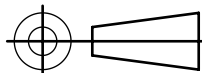
USCAR is an LLC consisting of members from FCA US LLC, Ford Motor Company and GM Corporation.

Any change to a EWCAP controlled portion of this drawing, including a revision record change must be approved, in writing, by the responsible EWCAP representative from each USCAR member company. Each EWCAP representative authorized to sign for his or her member company is responsible for obtaining all necessary approvals within that company prior to signing for the approval of the change.

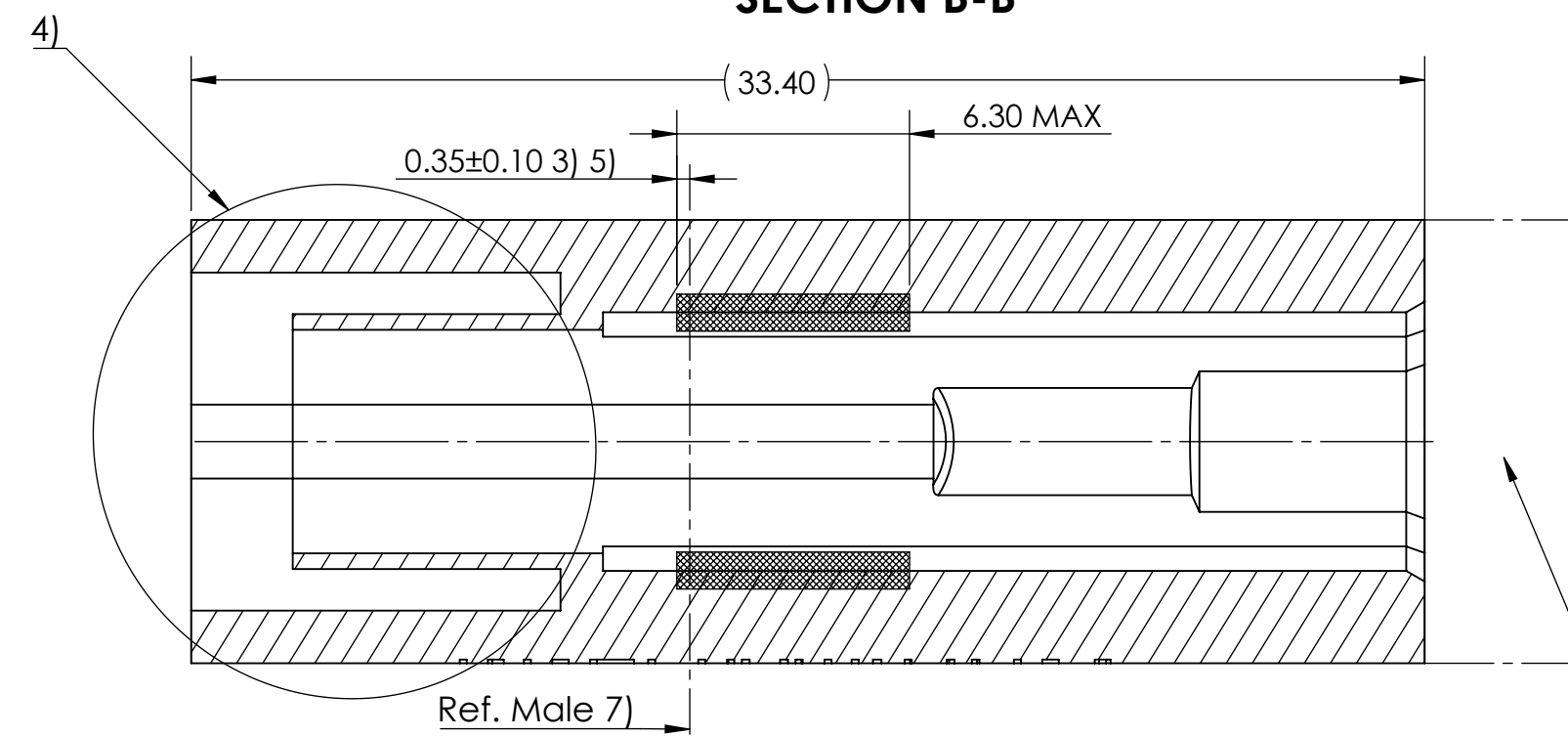
EWCAP expressly prohibits any party from changing either any EWCAP controlled portion of this drawing or any associated tooling before receiving approval, signed by the authorized representatives, of the USCAR member companies. Reference to the signed change notice must be entered in the drawing control column.



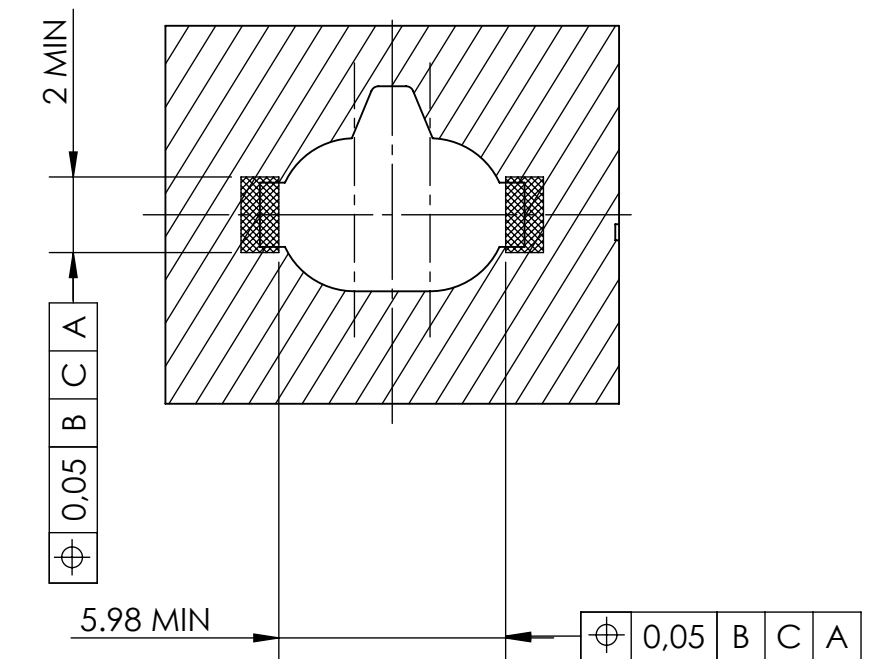
- 1) POSITION OF PRIMARY LOCK.
- 2) FRONT STOP SURFACE FOR PRIMARY LOCK.
- 3) POSITION OF SECONDARY LOCK.
- 4) CONSIDERATION MUST BE MADE ON INTERFACE COMPATIBILITY (USCAR OR OTHERWISE) WHEN INCORPORATING FEATURES NOT DEFINED IN THIS CAVITY DETAIL.
- 5) VALID FOR APPLICATIONS WITH INDEPENDENT SECONDARY LOCK. DIMENSION SHOWS FINAL POSITION WITH ASSEMBLED TERMINAL.
- 6) POSITION OF FIRST CONTACT POINT.
- 7) REFERENCE IS GIVEN WHEN CRIMPED CABLE IS BEING PULLED BACK/UNDER TENSILE LOAD.
- 8) DIMENSION IS GIVEN WHEN MATED HOUSINGS ARE BEING PUSHED IN OR PULLED BACK.

-	A	INITIAL RELEASE			
CHANGE SERIAL #	REV.	REVISION RECORD		DATE	DWN CHK
TOLERANCES (UNLESS OTHERWISE SPECIFIED)				<div>THIRD ANGLE PROJECTION</div> 	
DIMENSIONS ARE IN MILLIMETERS					
ANGLES ± 2 °					
USCAR-EWCAP					
SCALE 5:1		DRAWN BY E MARGULIS		CHECKED BY ---	
				DATE 20/06/2024	
TITLE					
1DP MALE UNIVERSAL CAVITY DRAWING					
SHEET	DRAWING NUMBER			SIZE	DO NOT SCALE DRAWING
1 of 3	CAV-S/U-STP-M-001			A2	COMPUTER AIDED DRAWING
					REVISION LEVEL
					A

# SECTION B-B



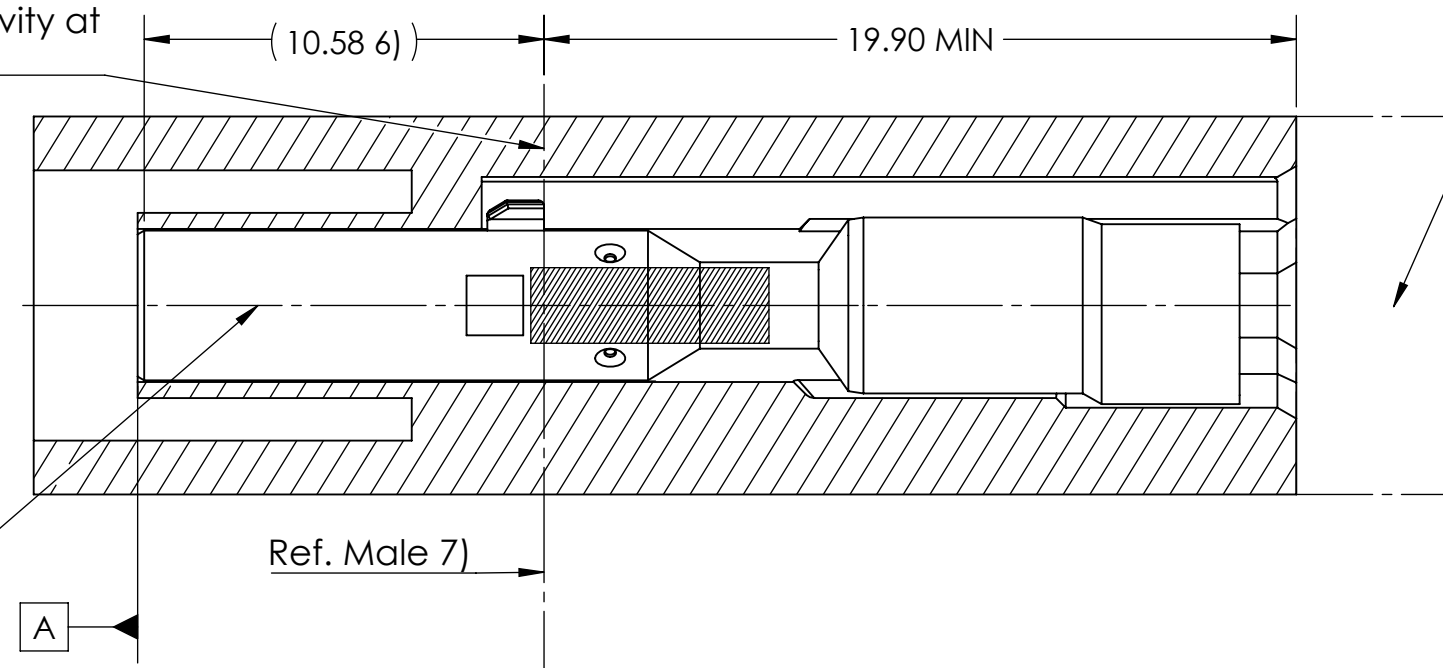
# SECTION C-C



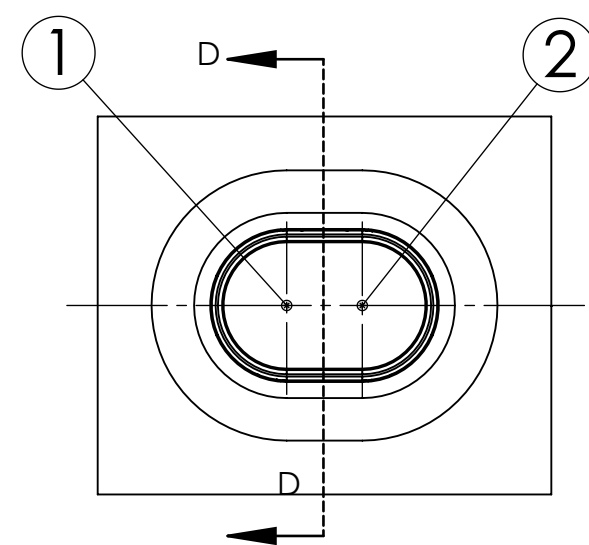
# SECTION D-D

Drawing shows connector fully assembled

Terminal primary lock feature within cavity at this surface (Ref. Male)



# Pinning



MALE TERMINAL SUB-ASSEMBLY

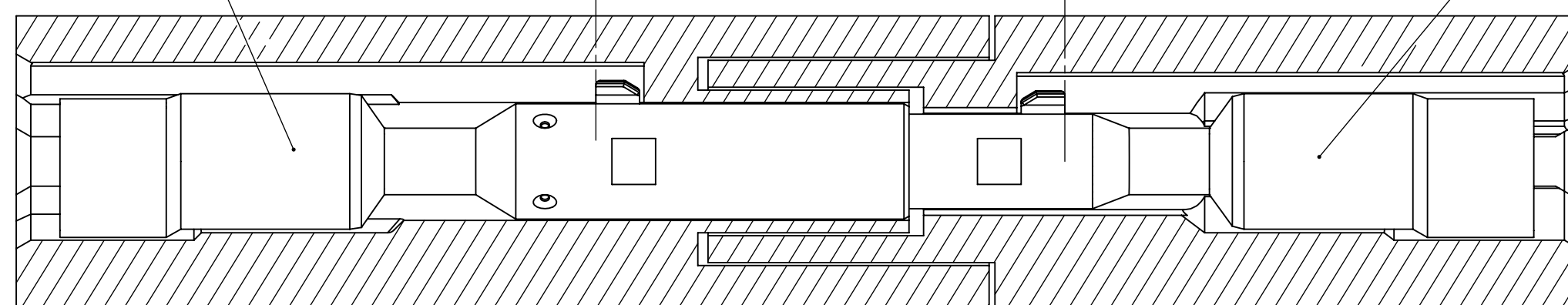
MALE TERMINAL SUB-ASSEMBLY

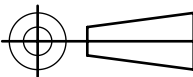
Ref. M 7)

16.10±0.25 8)

Ref. F 7)

FEMALE TERMINAL SUB-ASSEMBLY



TOLERANCES (UNLESS OTHERWISE SPECIFIED)				<div>THIRD ANGLE PROJECTION</div> 	
DIMENSIONS ARE IN MILLIMETERS					
ANGLES ± 2 °					
<div>USCAR-EWCAP</div>					
SCALE 5:1		DRAWN BY E MARGULIS		CHECKED BY ---	
				DATE 20/06/2024	
<div>TITLE</div> <div>1DP MALE UNIVERSAL CAVITY DRAWING</div>					
SHEET 2 of 3	DRAWING NUMBER CAV-S/U-STP-M-001			SIZE A2	DO NOT SCALE DRAWING COMPUTER AIDED DRAWING
					REVISION LEVEL A

NOTICE

EWCAP HAS SELECTED COMMON DIMENSIONS FOR THE CONNECTOR(S) DEPICTED AND DESCRIBED HEREIN (LISTED BELOW). FURTHER, EWCAP HAS SELECTED FOR PUBLICATION THIS DRAWING (AND ITS COMPANION ELECTRONIC MODEL) PREPARED BY RAYDIAL AUTOMOTIVE AS REPRESENTATIVE OF A CONNECTOR HAVING THESE DIMENSIONS. IN EXCHANGE FOR THE CONSIDERATION OF THE SELECTION OF THIS DRAWING FOR PUBLICATION (INCLUDING POSTING ON EWCAP'S WEBSITE) AND OTHER GOOD AND VALUABLE CONSIDERATION FLOWING FROM THIS SELECTION, RAYDIAL AUTOMOTIVE HEREBY AGREES ON BEHALF OF ITSELF AND ITS SUCCESSORS AND ASSIGNS, WITH RESPECT TO ANY COPYRIGHTS IT MAY HAVE IN THIS DRAWING AS WELL AS ANY PATENT RIGHTS IT MAY HAVE IN THE CONNECTOR ILLUSTRATED IN THIS DRAWING, NOT TO ENFORCE SUCH COPYRIGHTS AND PATENTS AGAINST ANY PERSON OR ENTITY ON ACCOUNT OF THEIR ACTIVITIES TO MAKE, HAVE MADE, USE AND SELL THE CONNECTOR ILLUSTRATED IN THIS DRAWING FOR VEHICULAR APPLICATIONS. THE TERM "CONNECTOR" AS USED IN THIS PARAGRAPH IS LIMITED SOLELY TO THE STRUCTURE SPECIFICALLY ILLUSTRATED IN THIS DRAWING.

NO WARRANTIES OR INDEMNITIES OF ANY KIND ARE MADE OR IMPLIED BY RAYDIAL AUTOMOTIVE OR EWCAP. IN PARTICULAR THERE ARE NO EXPRESS OR IMPLIED WARRANTIES OF FITNESS FOR A PARTICULAR PURPOSE, MERCHANTABILITY, NON-INFRINGEMENT OR ANY OTHER WARRANTY OF ANY KIND. IN ADDITION, THERE ARE NO EXPRESS OR IMPLIED WARRANTIES OR INDEMNITIES OF ANY KIND RELATING TO THIRD PARTY CLAIMS ARISING UNDER THE INTELLECTUAL PROPERTY LAWS OF ANY COUNTRY. ANYONE USING THE INFORMATION IN THIS DRAWING DOES SO AT THEIR OWN RISK.

APPLICABLE EWCAP DRAWING NUMBERS:  
777-U-002-1-Z01

TOLERANCES (UNLESS OTHERWISE SPECIFIED)			<div>THIRD ANGLE PROJECTION</div>	
DIMENSIONS ARE IN MILLIMETERS				
ANGLES ± 2 °				
USCAR-EWCAP				
SCALE 5:1		DRAWN BY E MARGULIS		CHECKED BY ---
				DATE 20/06/2024
TITLE 1DP MALE UNIVERSAL CAVITY DRAWING				
SHEET 3 of 3	DRAWING NUMBER CAV-S/U-STP-M-001		SIZE A2	DO NOT SCALE DRAWING COMPUTER AIDED DRAWING
				REVISION LEVEL A