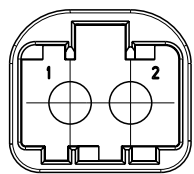
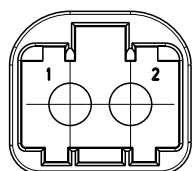


POLARIZATION CODING
SCALE 2:1



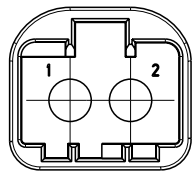
CODE A
RIBS 1,3,5,7

CODE B
RIBS 2,4,6,8



CODE C
RIBS 1,3,6,8

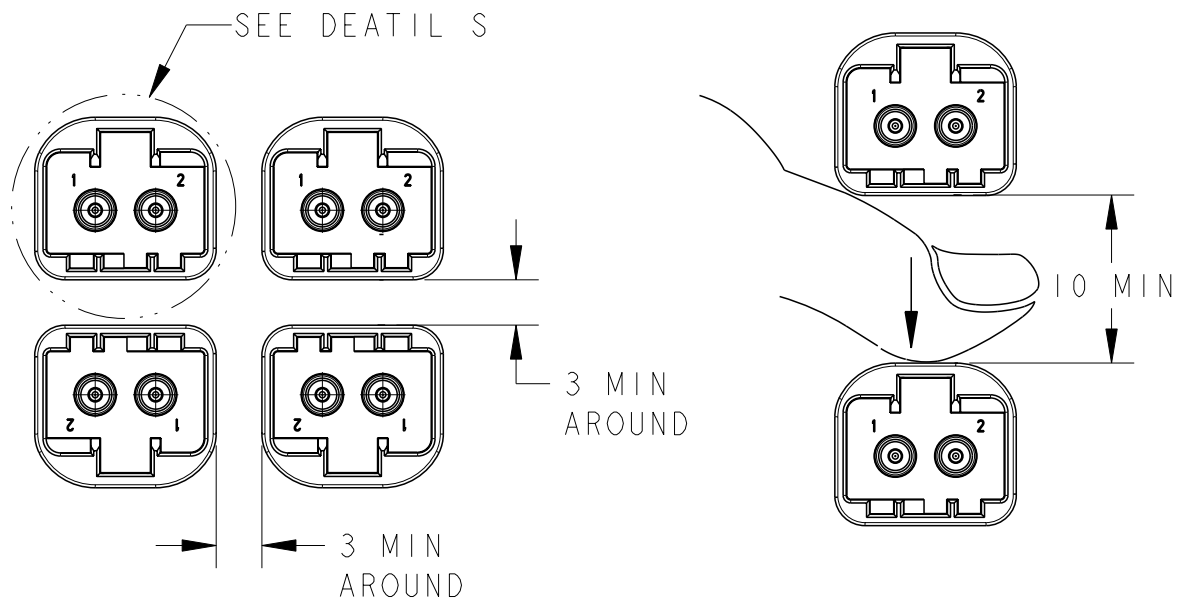
CODE D
RIBS 2,4,5,7



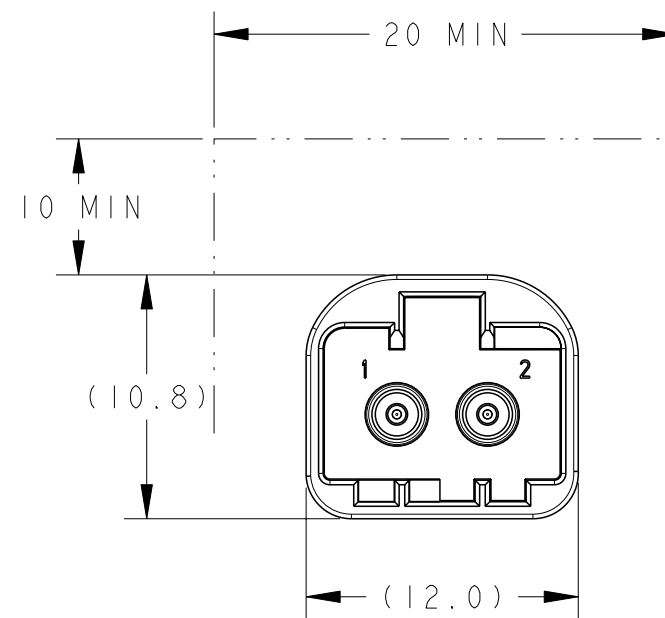
CODE E
RIBS 3,4,7,8

CODE F
RIBS 1,2,5,6

PACKAGING VIEWS



HOUSING PLACEMENT ON THE BOARD
SCALE 2:1
REQUIRED SPACE FOR ACTUATION
(CABLE CONNECTOR NEEDS TO BE CONSIDERED)



DETAIL S
SCALE 3:1
REQUIRED SPACE FOR ACTUATION
(CABLE CONNECTOR NEEDS TO BE CONSIDERED)

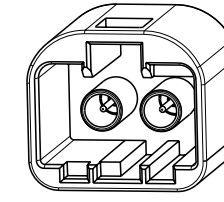
NOTICE

THIS DRAWING, OR PORTIONS OF IT, ARE CONTROLLED BY THE ELECTRICAL WIRING COMPONENTS APPLICATION PARTNERSHIP (EWCAP), A SUBGROUP OF THE UNITED STATES COUNSEL FOR AUTOMOTIVE RESEARCH LLC (USCAR LLC).

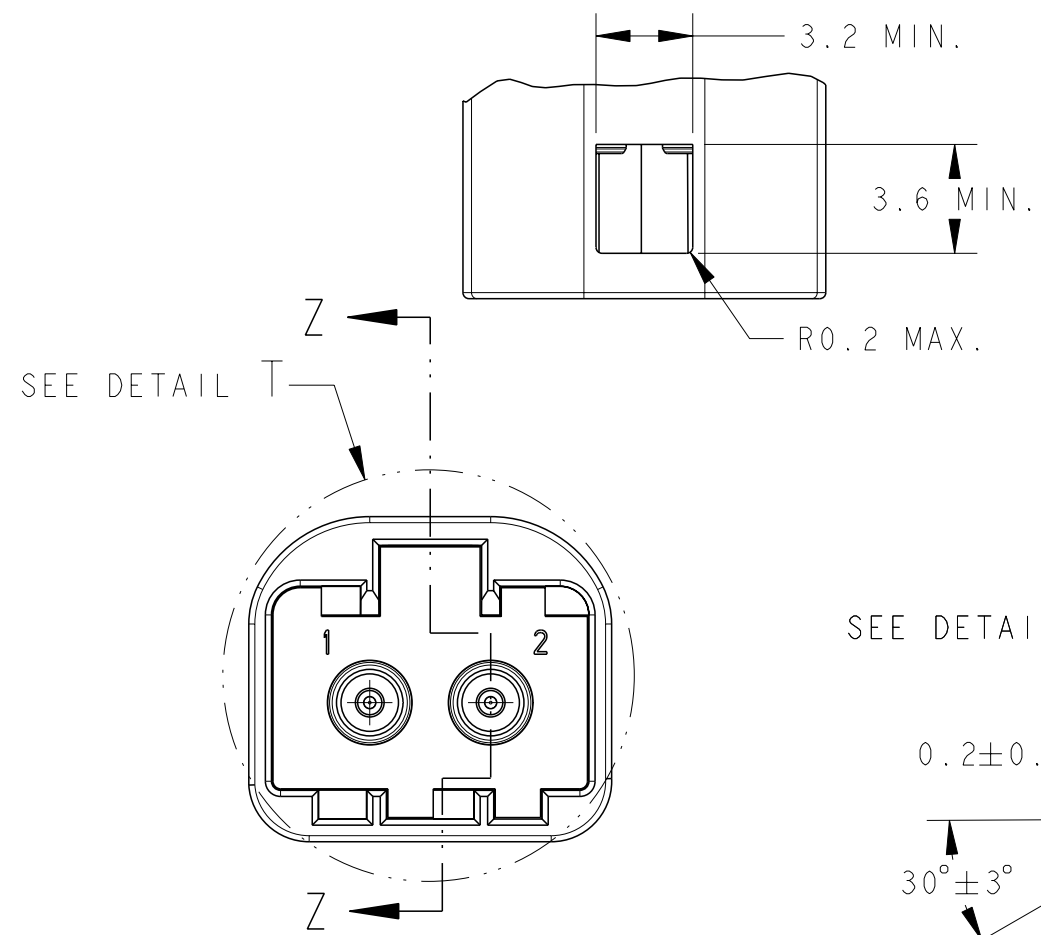
USCAR IS A LLC CONSISTING OF MEMBERS FROM FCA US LLC, FORD MOTOR COMPANY, AND GM CORPORATION.

ANY CHANGE TO A EWCAP CONTROLLED PORTION OF THIS DRAWING, INCLUDING A REVISION RECORD CHANGE MUST BE APPROVED, IN WRITING, BY THE RESPONSIBLE EWCAP REPRESENTATIVE FROM EACH USCAR MEMBER COMPANY. EACH EWCAP REPRESENTATIVE AUTHORIZED TO SIGN FOR HIS OR HER MEMBER COMPANY IS RESPONSIBLE FOR OBTAINING ALL NECESSARY APPROVALS WITHIN THAT COMPANY PRIOR TO SIGNING FOR THE APPROVAL OF THE CHANGE.

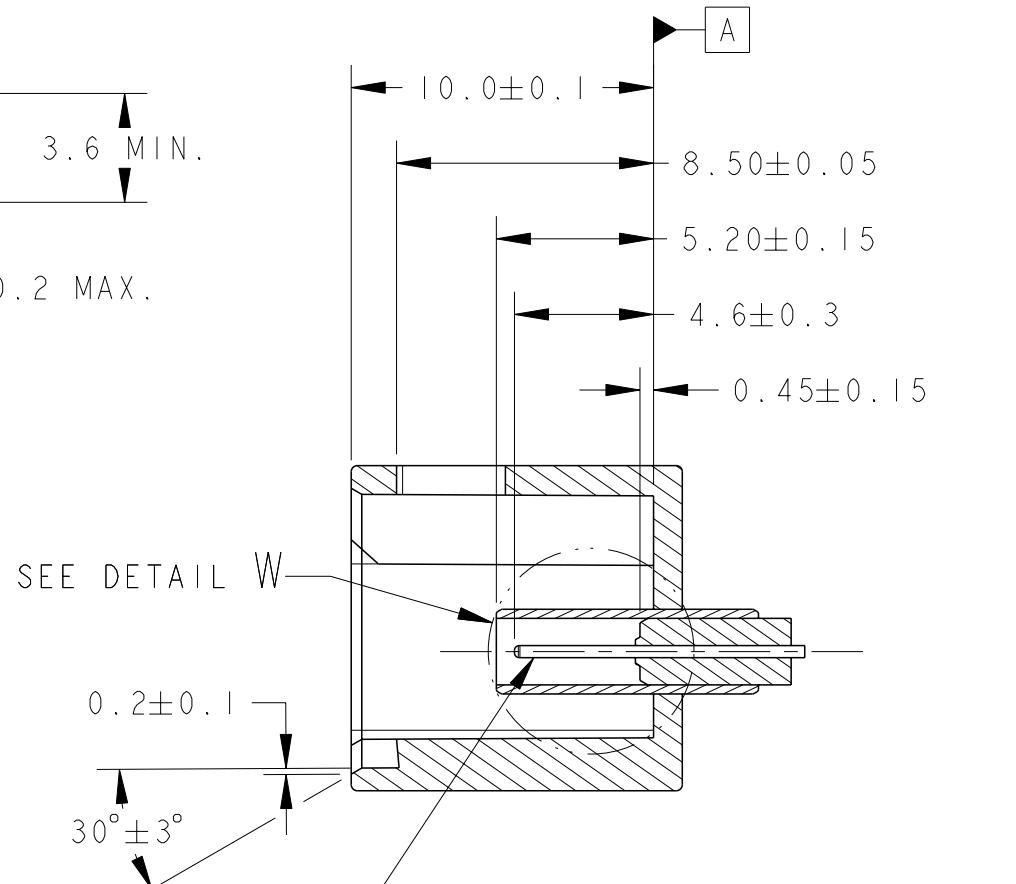
EWCAP EXPRESSLY PROHIBITS ANY PARTY FROM CHANGING EITHER ANY EWCAP CONTROLLED PORTION OF THIS DRAWING OR ANY ASSOCIATED TOOLING BEFORE RECEIVING APPROVAL, SIGNED BY THE AUTHORIZED REPRESENTATIVES, OF THE USCAR MEMBER COMPANIES. REFERENCE TO THE SIGNED CHANGE NOTICE MUST BE ENTERED IN THE DRAWING CONTROL COLUMN.



ISOMETRIC VIEW
SCALE 2:1




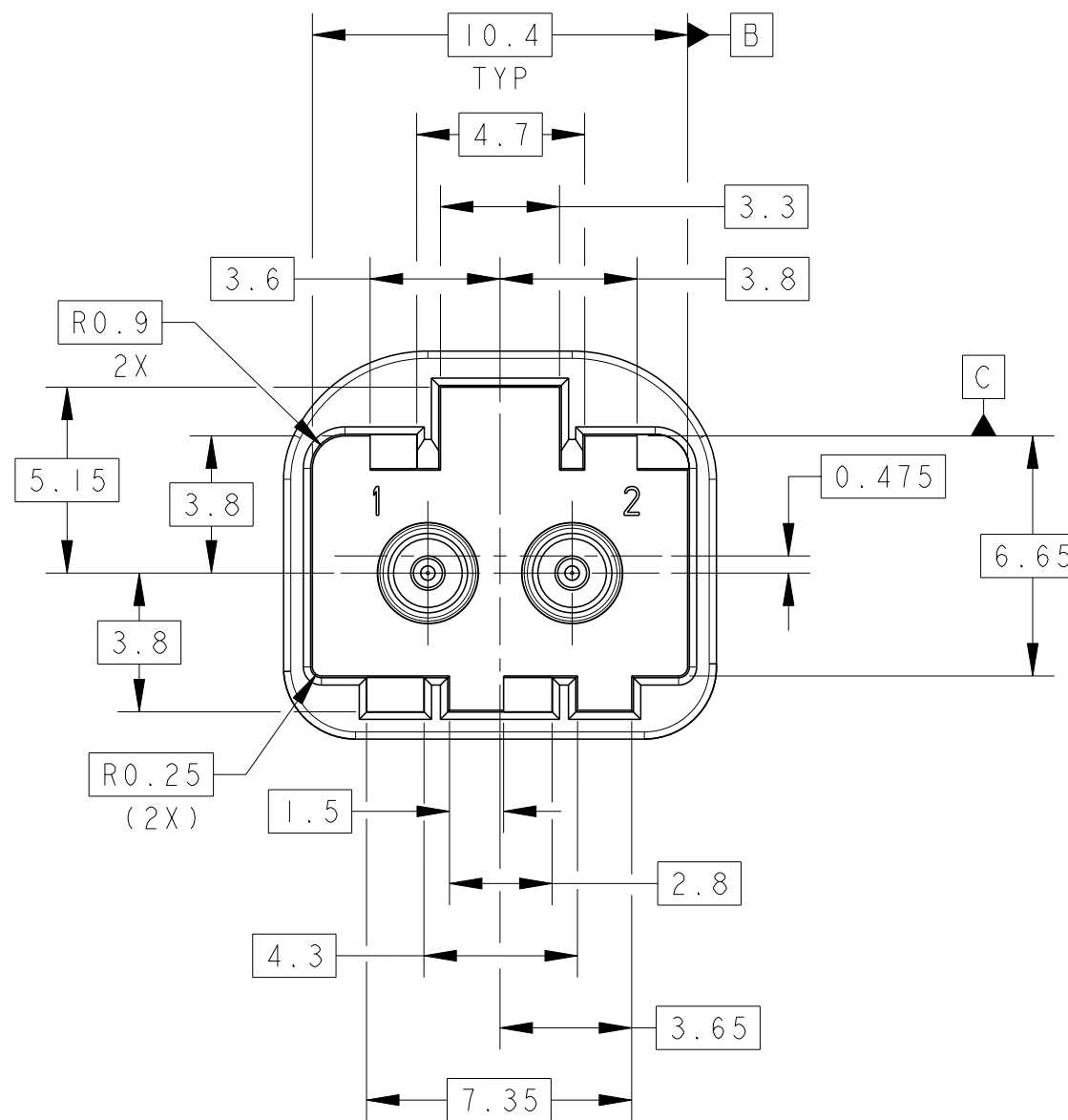
CODE "A" AS SHOWN
(FOR REFERENCE ONLY)



SECTION Z-Z

NOTES: UNLESS OTHERWISE SPECIFIED

1. DIMENSIONING AND TOLERANCING PER ASME Y14.5M.
 2. 0.25 MAX RADII ON ALL CORNERS SHOWN SHARP.
 3. ALL UNSPECIFIED RADII 0.25 MAX.
 4. STANDARD COLORS FOR POLARIZATION (SEE CHART IN LEFT LOWER CORNER OF THE DRAWING SHEET).
 5. REFER TO "SAE/USCAR 12 CONNECTOR DESIGN CRITERIA" FOR ADDITIONAL REQUIREMENTS.
 6. EXCEPT WHERE NOTED, DRAFT ON OUTSIDE SURFACES IS PERMISSIBLE WITHIN TOLERANCE.
 7.  SYMBOL DENOTES DIMENSIONS THAT MAY BE UTILIZED TO MONITOR PART QUALITY.
 8. WHEN USING SILVER PLATED TERMINALS, THE SILVER PLATING MUST STOP A MINIMUM OF 1mm FROM HEADER PLASTIC.
 9. THIS INTERFACE DRAWING, WHEN CREATED, WAS COMPATIBLE WITH THE MATE-AX DESIGN FROM TE CONNECTIVITY

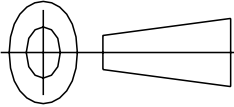


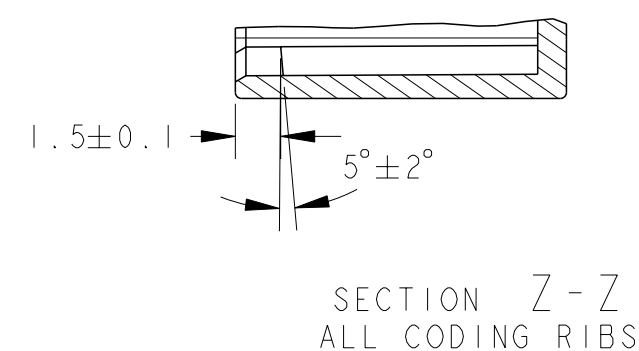
DETAIL T
SCALE 5:1

888-U-002-1-A03	A	JET BLACK
888-U-002-1-B03	B	PURE WHITE
888-U-002-1-C03	C	LIGHT BLUE
888-U-002-1-D03	D	CLARET VIOLET
888-U-002-1-E03	E	MAY GREEN
888-U-002-1-F03	F	NUT BROWN
EWCAP P/N	POLARITY	MATING CONNECTOR COLOR

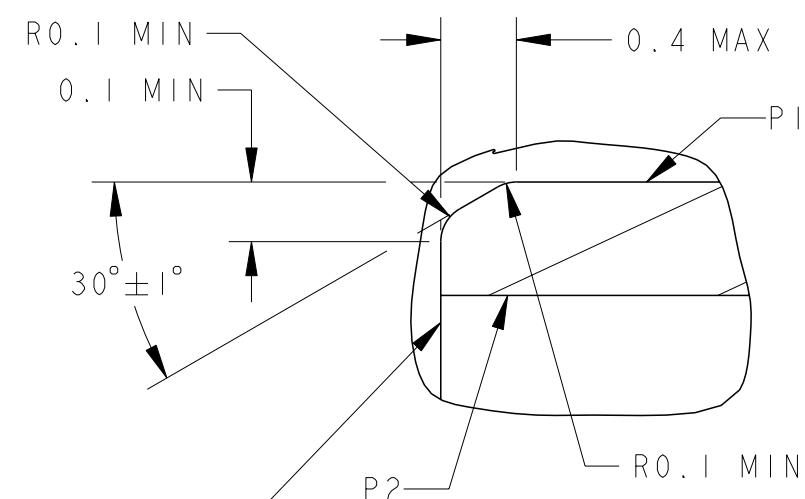


208-18048

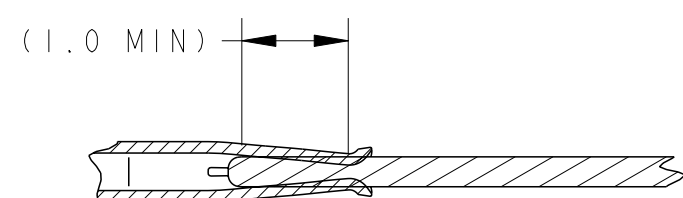
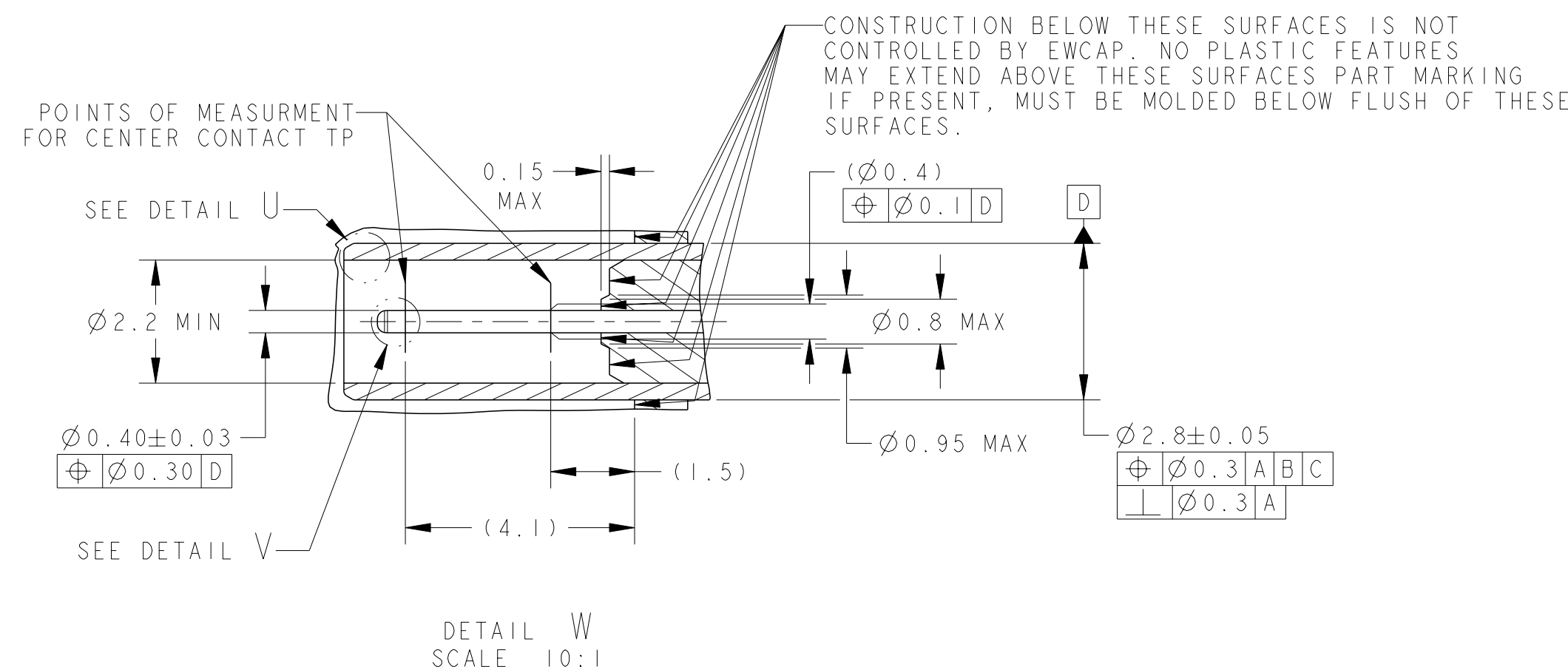
-	A	INITIAL RELEASE	04-08-20	MP	JH
CHANGE SERIAL NUMBER	LET	REVISION RECORD	DATE	DWN	CHK
TOLERANCES (UNLESS OTHERWISE SPECIFIED)					
DIMENSIONS ARE IN MILLIMETERS					
ANGLES ± 1°					
X.X ± 0.1 X.XX ± 0.05					
USCAR-EWCAP					
SCALE	4:1	DRAWN BY MAHANTAGOUDA	CHECKED BY JOHN HALL	DATE 04-08-20	
TITLE MINI COAX INTERFACE, UNSEALED, 2 POS					
SHEET 1 OF 3	DRAWING NUMBER 888-U-002-1-Z03		SIZE A2	DO NOT SCALE DRAWING COMPUTER AIDED DRAWING	
				REVISION LEVEL 2	



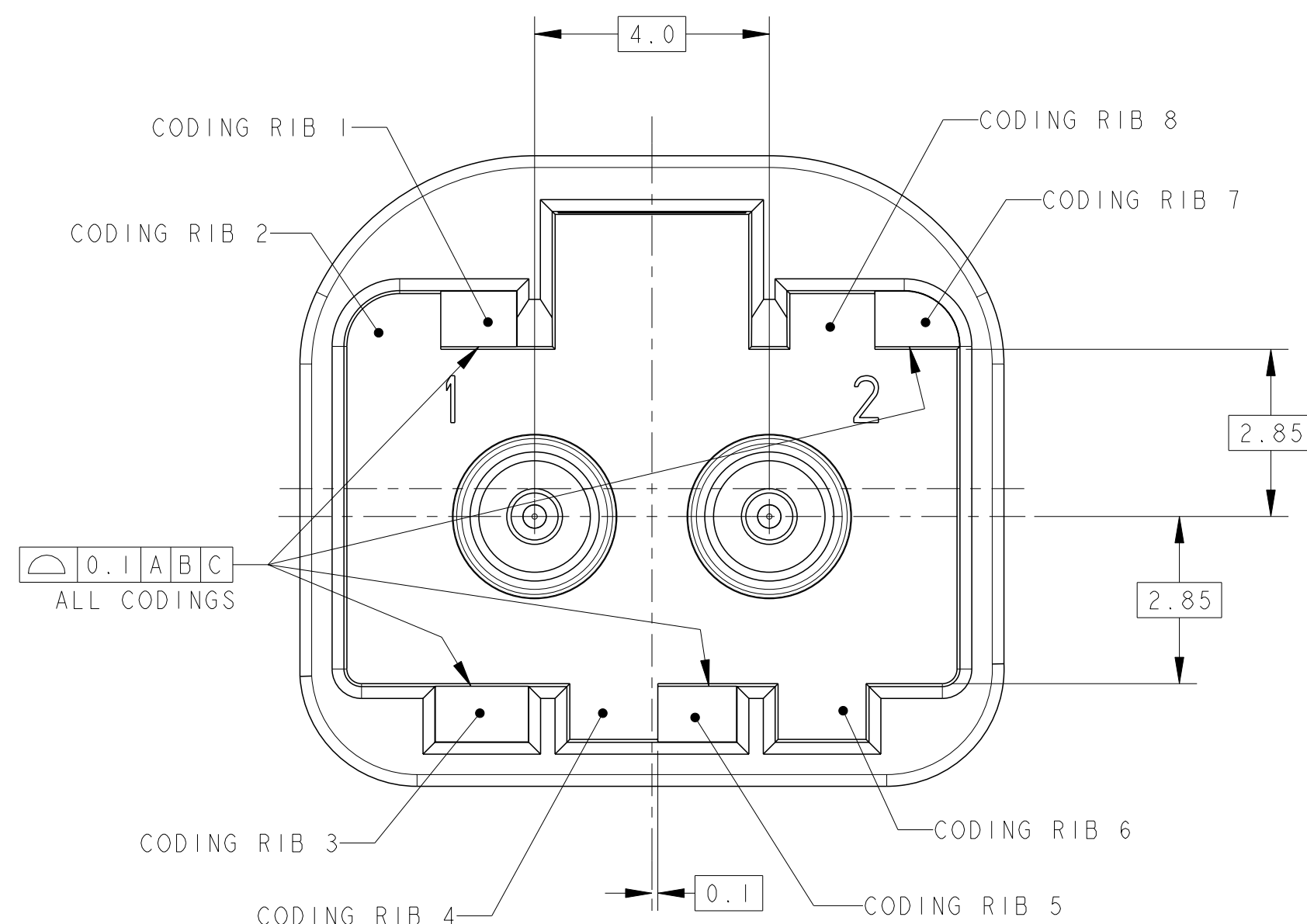
NO BURR, DISPLACEMENTS
OR SHARP EDGES PERMITTED
IN AREAS BETWEEN P1 ↔ P2



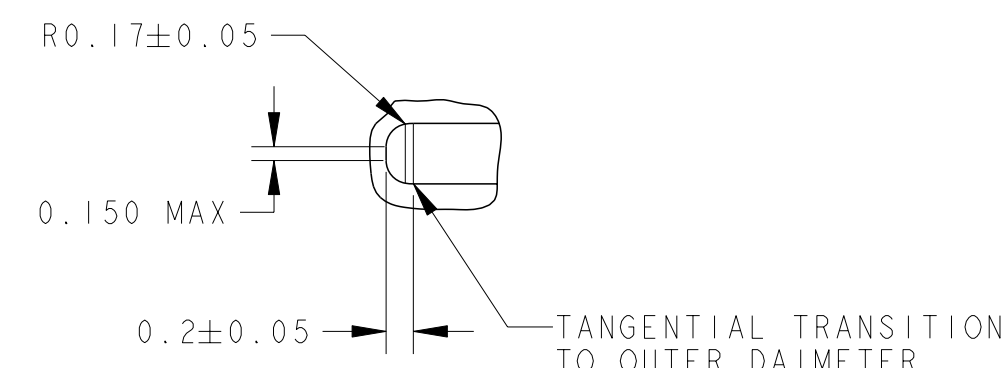
DETAIL U
SCALE 50:1



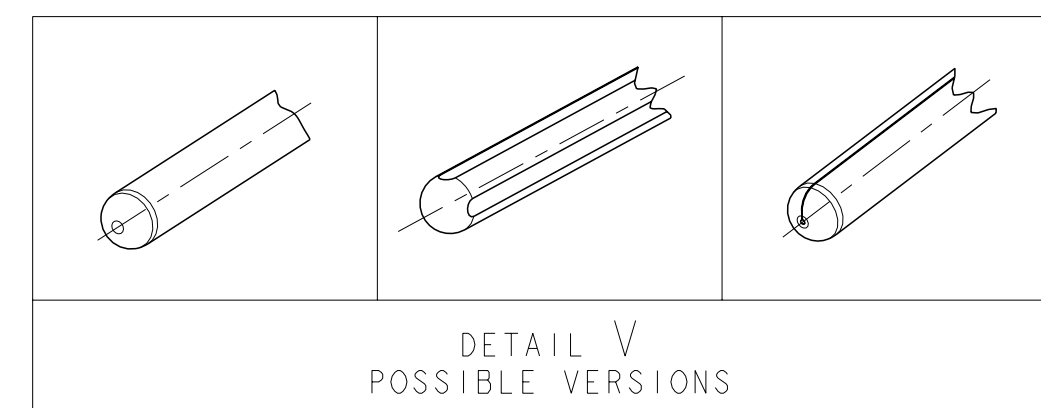
SOCKET CONTACT - CONTACT WIPE
SCALE 10:1



POLARIZATION CODING RIB LOCATIONS
SCALE 10:1
ALL CODING RIBS
(CODE A SHOWN FOR REFERENCE ONLY
SEE POLARIZATION CODING TABLE)



DETAIL V
SCALE 20:1



OPTION 1: 0.8µm MIN Sn OVER 1.0µm MIN Ni	OUTER CONTACT
OPTION 2: HOT DIPPED 0.8µm MIN Sn	INNER CONTACT
2.0µm MIN Ag OVER 1.0µm MIN Ni	PLATING OF CONTACT AREA

TOLERANCES (UNLESS OTHERWISE SPECIFIED)	THIRD ANGLE PROJECTION
DIMENSIONS ARE IN MILLIMETERS	
ANGLES ± 1°	
X.X ± 0.1	X.XX ± 0.05

USCAR-EWCAP

SCALE 4:1	DRAWN BY MAHANTAGOUDA	CHECKED BY JOHN HALL	DATE 04-08-20
-----------	-----------------------	----------------------	---------------

TITLE
MINI COAX INTERFACE, UNSEALED, 2 POS



208-18048

SHEET 2 OF 3	DRAWING NUMBER 888-U-002-1-Z03	SIZE A2	DO NOT SCALE DRAWING COMPUTER AIDED DRAWING	REVISION LEVEL 2
--------------	--------------------------------	---------	--	------------------

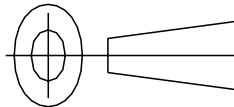
EWCAP LEGAL NOTICE
(REQUIRED ON ALL EWCAP DRAWINGS)
REVISION 7-18-2019

NOTICE

EWCAP HAS SELECTED COMMON DIMENSIONS FOR THE CONNECTOR(S) DEPICTED AND DESCRIBED HEREIN (LISTED BELOW). FURTHER, EWCAP HAS SELECTED FOR PUBLICATION THIS DRAWING (AND ITS COMPANION ELECTRONIC MODEL) PREPARED BY TE CONNECTIVITY AS REPRESENTATIVE OF A CONNECTOR HAVING THESE DIMENSIONS. IN EXCHANGE FOR THE CONSIDERATION OF THE SELECTION OF THIS DRAWING FOR PUBLICATION (INCLUDING POSTING ON EWCAP'S WEB SITE) AND OTHER GOOD AND VALUABLE CONSIDERATION FLOWING FROM THIS SELECTION, TE CONNECTIVITY HEREBY AGREES ON BEHALF OF ITSELF AND ITS SUCCESSORS AND ASSIGNS, WITH RESPECT TO ANY COPYRIGHTS IT MAY HAVE IN THIS DRAWING AS WELL AS ANY PATENT RIGHTS IT MAY HAVE IN THE CONNECTOR ILLUSTRATED IN THIS DRAWING, NOT TO ENFORCE SUCH COPYRIGHTS AND PATENTS AGAINST ANY PERSON OR ENTITY ON ACCOUNT OF THEIR ACTIVITIES TO MAKE, HAVE MADE, USE AND SELL THE CONNECTOR ILLUSTRATED IN THIS DRAWING FOR VEHICULAR APPLICATIONS. THE TERM "CONNECTOR" AS USED IN THIS PARAGRAPH IS LIMITED SOLELY TO THE STRUCTURE SPECIFICALLY ILLUSTRATED IN THIS DRAWING. NO WARRANTIES OR INDEMNITIES OF ANY KIND ARE MADE OR IMPLIED BY TE CONNECTIVITY OR EWCAP. IN PARTICULAR THERE ARE NO EXPRESS OR IMPLIED WARRANTIES OF FITNESS FOR A PARTICULAR PURPOSE, MERCHANTABILITY, NON-INFRINGEMENT OR ANY OTHER WARRANTY OF ANY KIND. IN ADDITION, THERE ARE NO EXPRESS OR IMPLIED WARRANTIES OR INDEMNITIES OF ANY KIND RELATING TO THIRD PARTY CLAIMS ARISING UNDER THE INTELLECTUAL PROPERTY LAWS OF ANY COUNTRY. ANYONE USING THE INFORMATION IN THIS DRAWING DOES SO AT THEIR OWN RISK.

APPLICABLE EWCAP DRAWING NUMBERS:
888-U-002-1-Z03



TOLERANCES (UNLESS OTHERWISE SPECIFIED)				THIRD ANGLE PROJECTION		
DIMENSIONS ARE IN MILLIMETERS						
ANGLES ± 1°						
X.X ± 0.1 X.XX ± 0.05						
USCAR-EWCAP						
SCALE	4:1	DRAWN BY MAHANTAGOUDA		CHECKED BY JOHN HALL	DATE 04-08-20	
TITLE						
MINI COAX INTERFACE, UNSEALED, 2 POS						
SHEET 3 OF 3	DRAWING NUMBER 888-U-002-1-Z03			SIZE A2	DO NOT SCALE DRAWING COMPUTER AIDED DRAWING	REVISION LEVEL 2