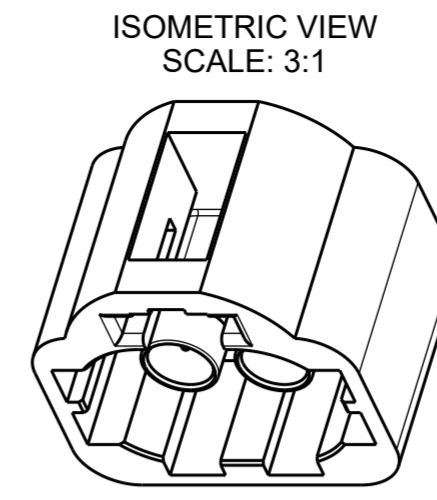
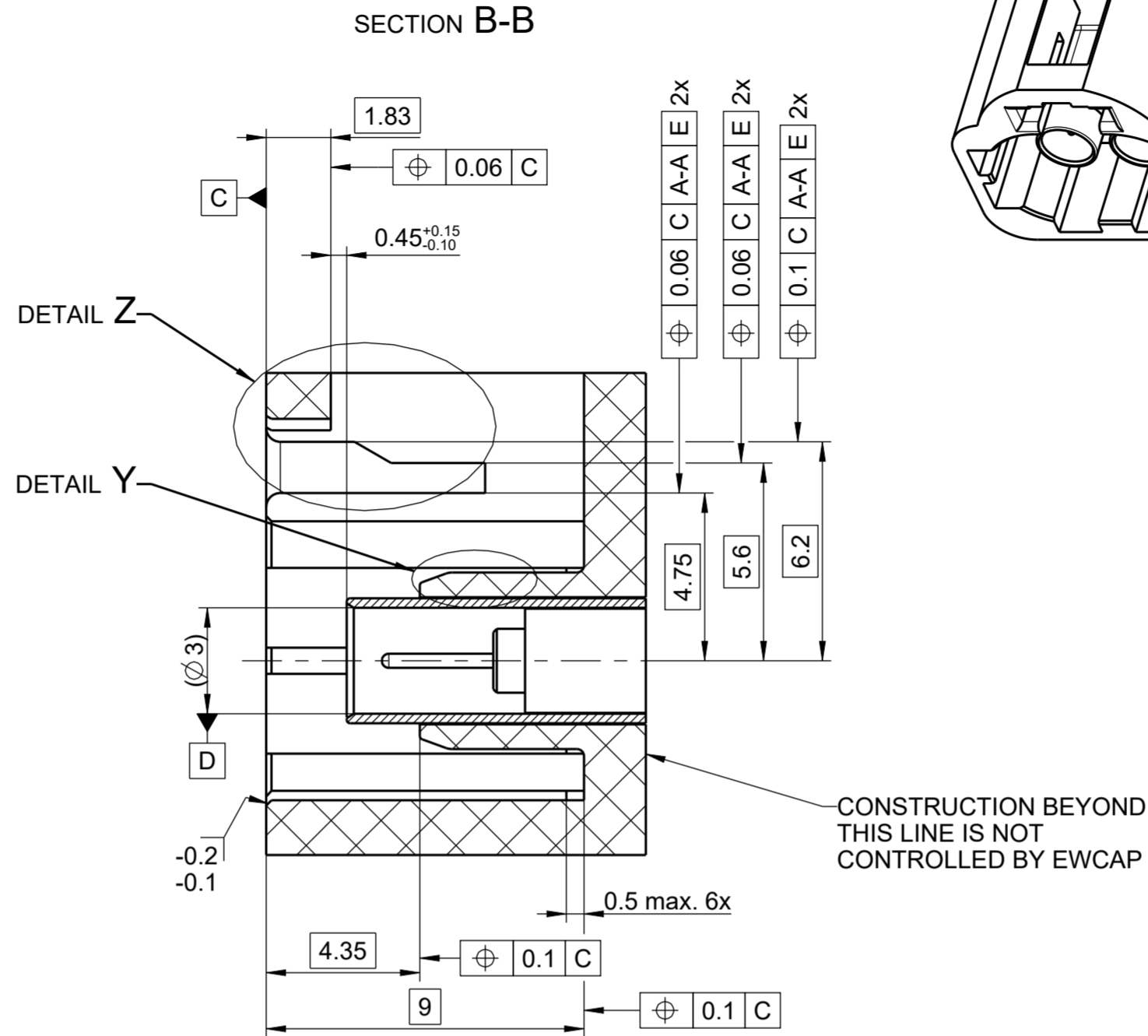
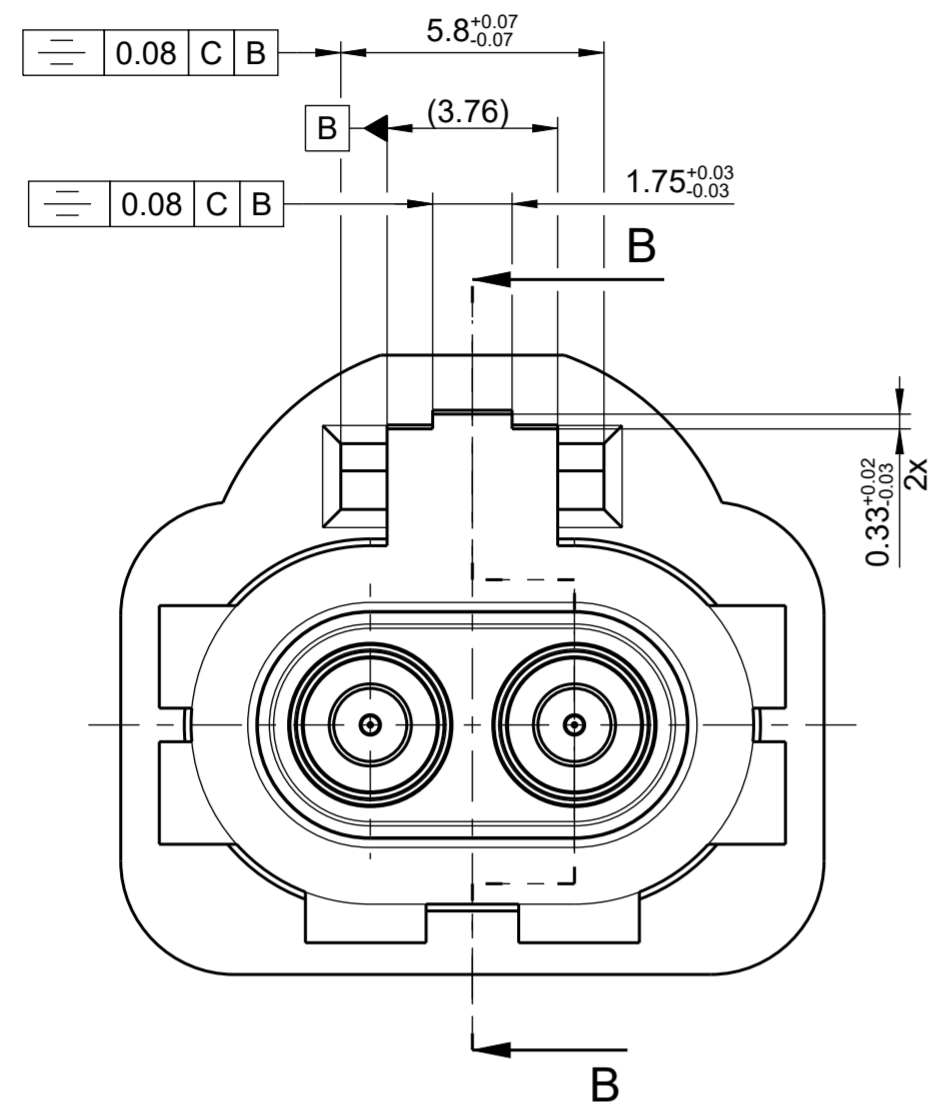
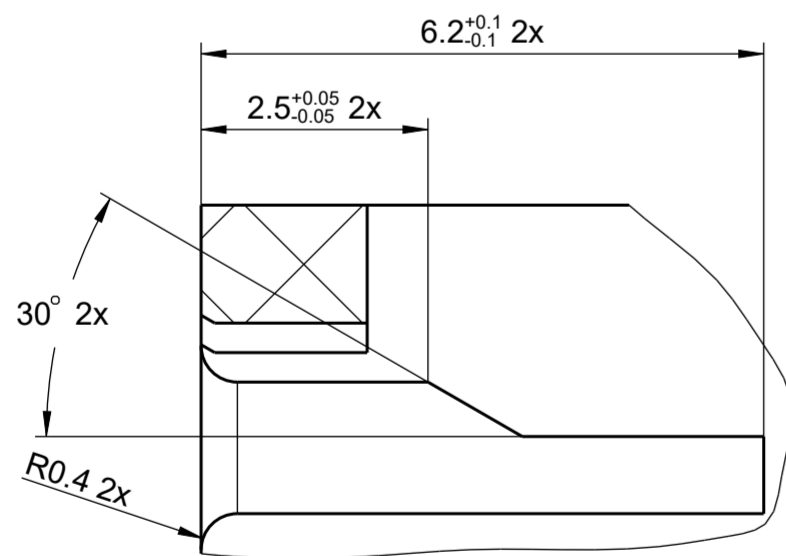


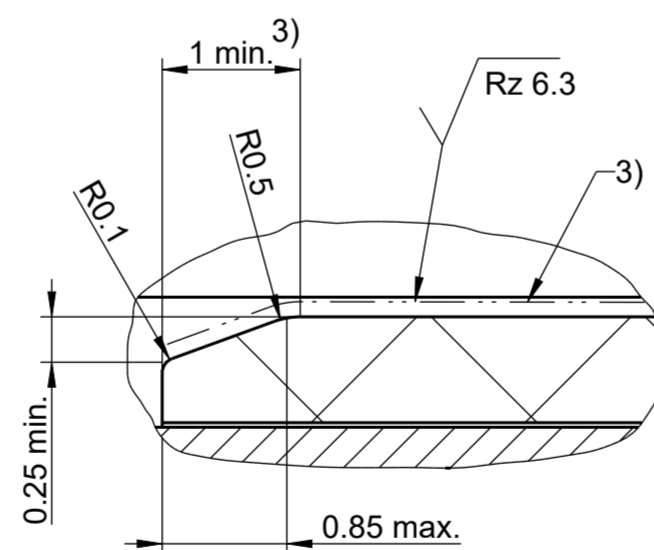
HIGH SPEED FAKRA MINI WATERPROOF



DETAIL Z
12:1



DETAIL Y
20:1



NOTES:

- 1) BASE DOCUMENT FOR THE CONTACT IS THE USCAR DRAWING: 888-U-001-1-Z02 (SHEET 1)
- 2) SEALING SURFACE TO BE FREE OF SURFACE FLAWS
- 3) POSITION OF SEAL, THREE SEALING LIPS HAVE TO BE ENGAGED
- 4) ESCAPE PATH FOR CONDENSATION IS REQUIRED BUT NOT SHOWN
- 5) FREE SPACE FOR MATING PART

NOTICE:

This drawing, or portions of it are controlled by the Electrical Wiring Components Application Partnership (EWCAP) a subgroup of the United States Council for Automotive Research LLC (USCAR LLC).

USCAR is an LLC consisting of members from FCA US LLC, Ford Motor Company and GM Corporation.

Any change to a EWCAP controlled portion of this drawing, including a revision record change must be approved, in writing, by the responsible EWCAP representative from each USCAR member company. Each EWCAP representative authorized to sign for his or her member company is responsible for obtaining all necessary approvals within that company prior to signing for the approval of the change.

EWCAP expressly prohibits any party from changing either any EWCAP controlled portion of this drawing or any associated tooling before receiving approval, signed by the authorized representatives, of the USCAR member companies. Reference to the signed change notice must be entered in the drawing control column.

		A	INITIAL RELEASE		03/11/22
CHANGE SERIAL NUMBER	LET		REVISION RECORD	DATE	DWN CHK
TOLERANCES (UNLESS OTHERWISE SPECIFIED)					
DIMENSIONS ARE IN MILLIMETERS					
DIMENSIONING AND TOLERANCE IN ACCORDANCE WITH ASME Y14.5-2009					
				THIRD ANGLE PROJECTION	

USCAR-EWCAP

SCALE	6:1	DRAWN BY	S. STROM	CHECKED BY	C. SCHMIDT	DATE	03/11/22
-------	-----	----------	----------	------------	------------	------	----------

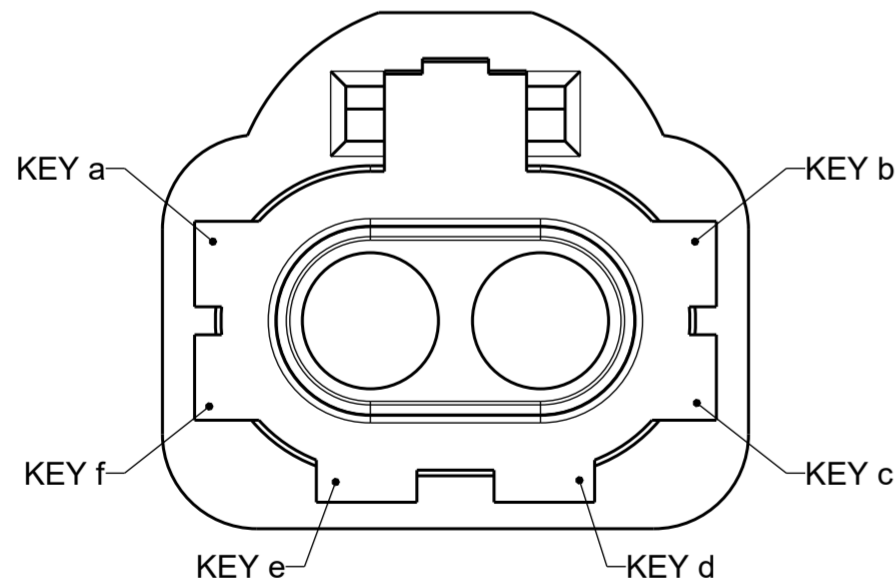
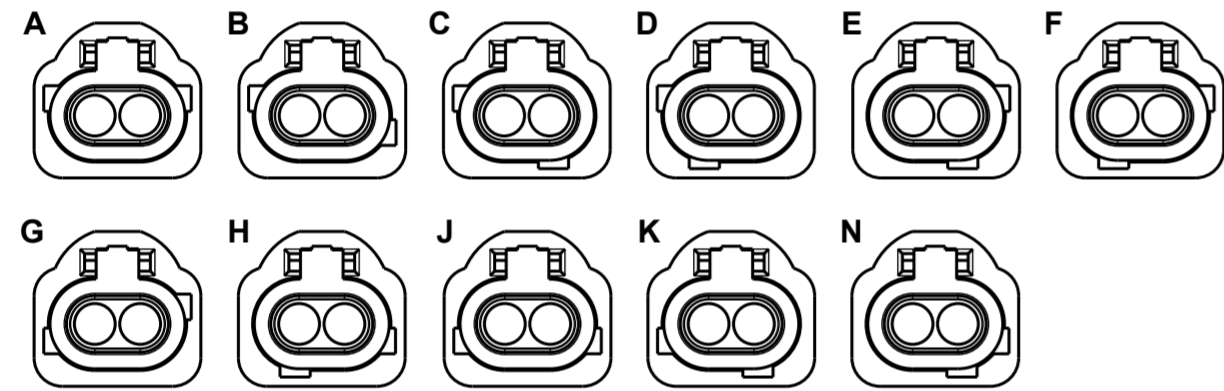
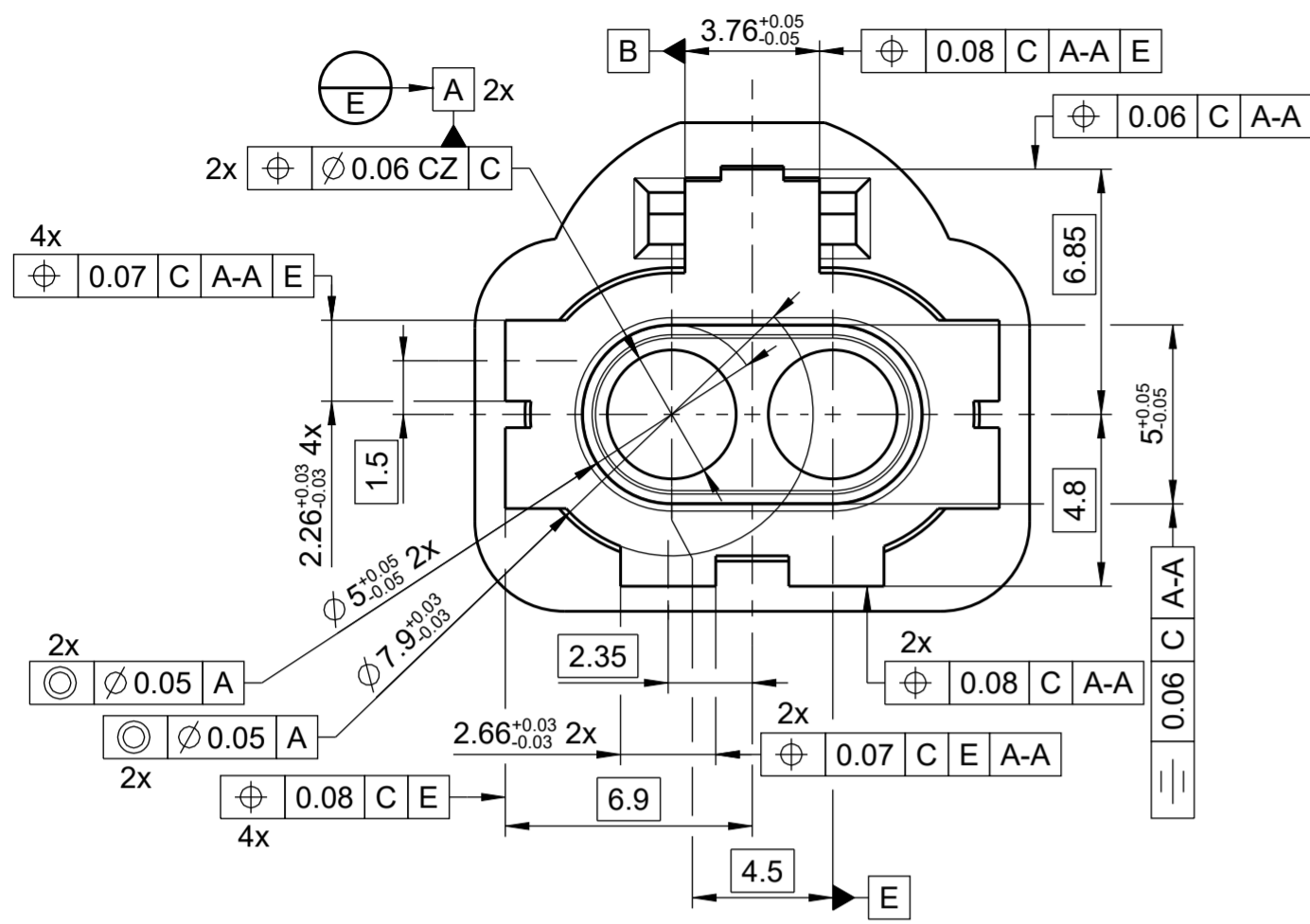
TITLE							
HIGH SPEED MINI WATERPROOF-DOUBLE INTERFACE COAX CONNECTOR. 50 OHM.							

Rosenberger

D-84526 Tittmoning
Germany

SHEET	1 of 3	DRAWING NUMBER	888-S-002-1-Z01	SIZE	A2	DO NOT SCALE DRAWING	COMPUTER AIDED DRAWING	REVISION LEVEL	A
-------	--------	----------------	-----------------	------	----	----------------------	------------------------	----------------	---

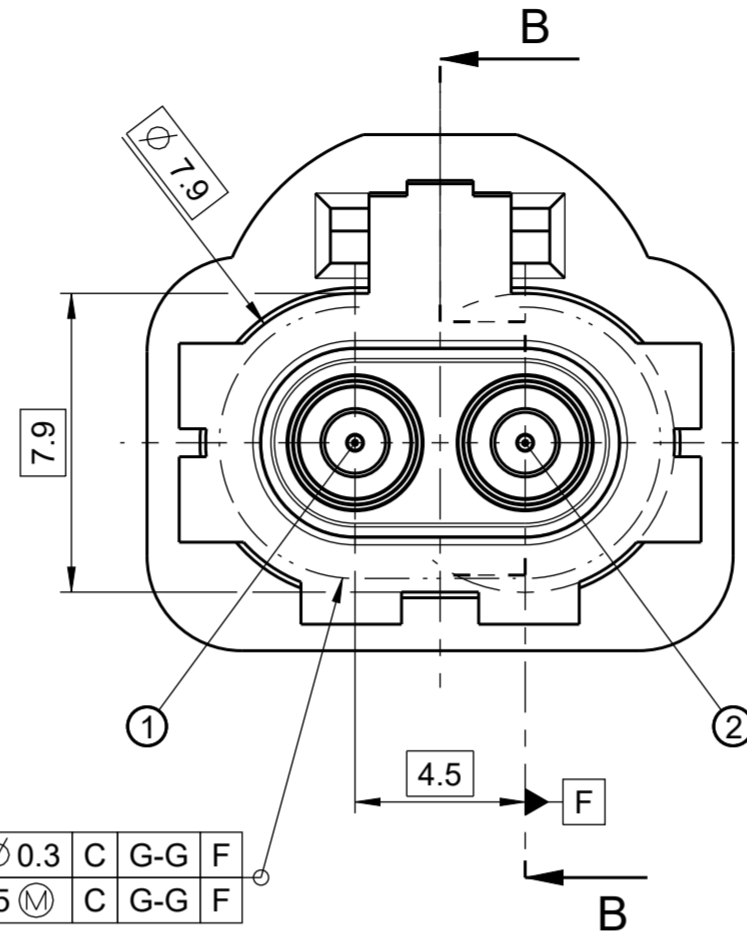
CODING



EWCAP REF #	CODE	KEY	COLOR	SIMILAR RAL-NO
888-S-002-1-N01	N	c-d	PASTEL GREEN	6019
888-S-002-1-K01	K	d-f	CURRY	1027
888-S-002-1-J01	J	c-f	BEIGE	1001
888-S-002-1-H01	H	c-e	LIGHT PINK	3015
888-S-002-1-G01	G	b-f	PLATINUM GREY	7036
888-S-002-1-F01	F	b-e	NUT BROWN	8011
888-S-002-1-E01	E	b-d	MAY GREEN	6017
888-S-002-1-D01	D	a-e	CLARET VIOLET	4004
888-S-002-1-C01	C	a-d	LIGHT BLUE	5012
888-S-002-1-B01	B	a-c	PURE WHITE	9010
888-S-002-1-A01	A	a-b	JET BLACK	9005

HIGH SPEED FAKRA MINI WATERPROOF

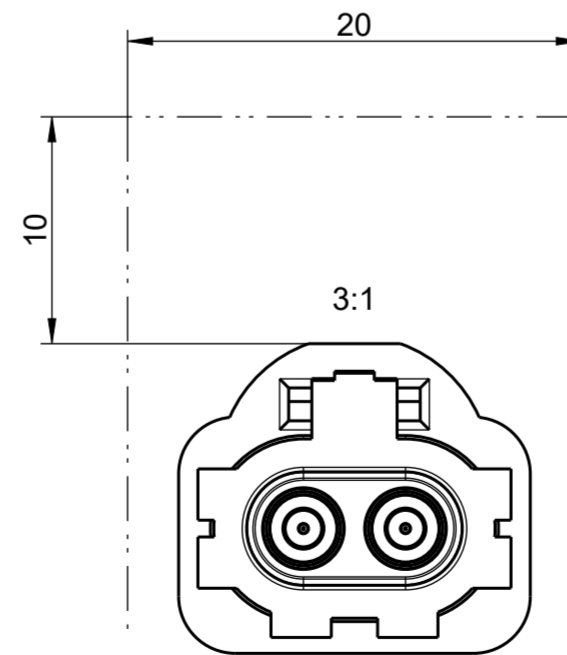
(X) NUMBER FOR PINNING



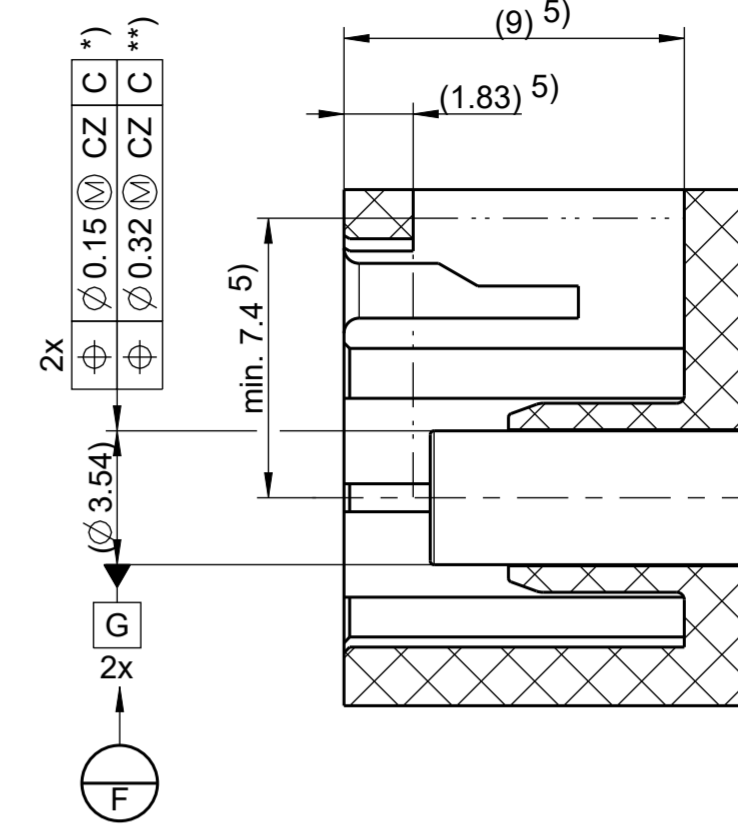
- *) $\text{Ø} 0.3$ C G-G F
- ***) $\text{Ø} 0.35$ M C G-G F

*) APPLIES ONLY FOR PCB-PLUG, REFERRING TO MEASURING PLANE 1.
 **) APPLIES ONLY FOR FLOATING OUTER CONTACT OF THE CABLE PLUG, REFERRING TO MEASURING PLANE 1.

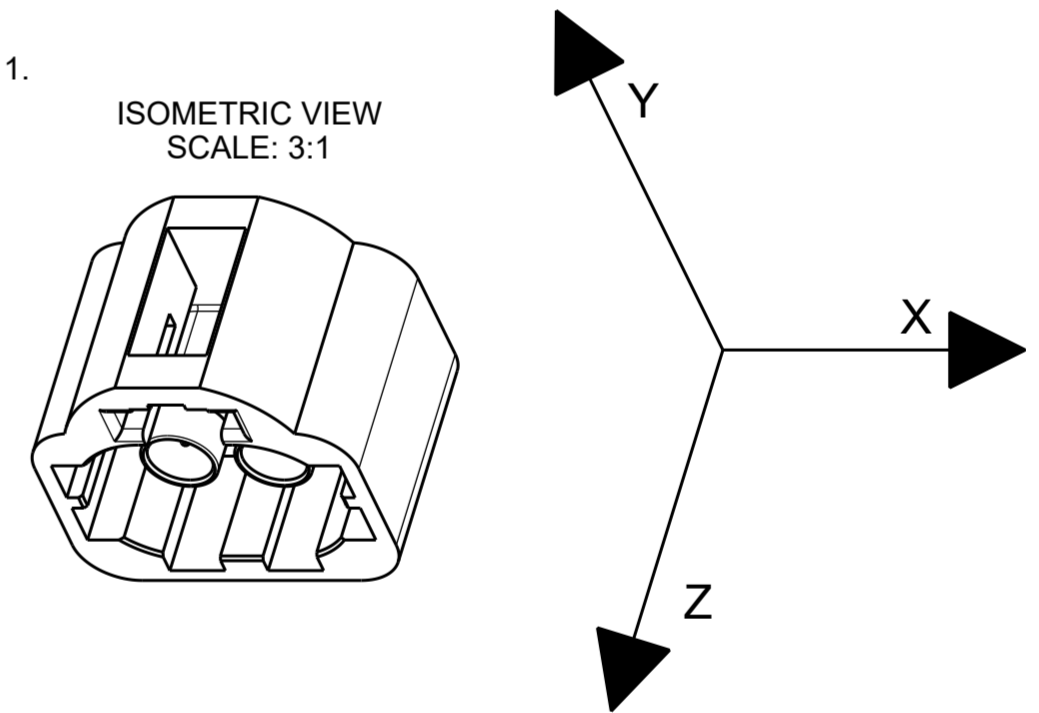
REQUIRED SPACE FOR ACTUATION



SECTION B-B



Explanation of the Datum plane



- A-A -> Orientation of the housing in the Z-direction on the XY plane, position of the outer contact
- B -> Limitation of the rotation about the Z-axis
- C -> Front surface
- D -> Outer contact is reference for inner contact
- E -> Reference plane housing
- F -> Reference plane outer contact
- G -> Outer contact reference for housing

TOLERANCES (UNLESS OTHERWISE SPECIFIED)		THIRD ANGLE PROJECTION	
DIMENSIONS ARE IN MILLIMETERS			
DIMENSIONING AND TOLERANCE IN ACCORDANCE WITH ASME Y14.5-2009			

USCAR-EWCAP

SCALE: 5:1	DRAWN BY: S. STROM	CHECKED BY: C. SCHMIDT	DATE: 03/11/22
------------	--------------------	------------------------	----------------

TITLE
**HIGH SPEED MINI WATERPROOF-DOUBLE INTERFACE
 COAX CONNECTOR. 50 OHM.**

Rosenberger
 D-84526 Tittmoning
 Germany

SHEET: 2 of 3	DRAWING NUMBER: 888-S-002-1-Z01	SIZE: A2	DO NOT SCALE DRAWING COMPUTER AIDED DRAWING	REVISION LEVEL: A
---------------	---------------------------------	----------	--	-------------------

NOTICE

EWCAP HAS SELECTED COMMON DIMENSIONS FOR THE CONNECTOR(S) DEPICTED AND DESCRIBED HEREIN (LISTED BELOW). FURTHER, EWCAP HAS SELECTED FOR PUBLICATION THIS DRAWING (AND ITS COMPANION ELECTRONIC MODEL) PREPARED BY ROSENBERGER AS REPRESENTATIVE OF A CONNECTOR HAVING THESE DIMENSIONS. IN EXCHANGE FOR THE CONSIDERATION OF THE SELECTION OF THIS DRAWING FOR PUBLICATION (INCLUDING POSTING ON EWCAP'S WEB SITE) AND OTHER GOOD AND VALUABLE CONSIDERATION FLOWING FROM THIS SECTION, ROSENBERGER HEREBY AGREES ON BEHALF OF ITSELF AND ITS SUCCESSORS AND ASSIGNS, WITH RESPECT TO ANY COPYRIGHTS IT MAY HAVE IN THIS DRAWING AS WELL AS ANY PATENT RIGHTS IT MAY HAVE IN THE CONNECTOR ILLUSTRATED IN THIS DRAWING, NOT TO ENFORCE SUCH COPYRIGHTS AND PATENTS AGAINST ANY PERSON OR ENTITY ON ACCOUNT OF THEIR ACTIVITIES TO MAKE, HAVE MADE, USE AND SELL THE CONNECTOR ILLUSTRATED IN THIS DRAWING FOR VEHICULAR APPLICATIONS. THE TERM "CONNECTOR" AS USED IN THIS PARAGRAPH IS LIMITED SOLELY TO THE STRUCTURE SPECIFICALLY ILLUSTRATED IN THIS DRAWING.

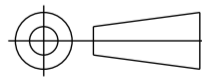
SIGNED M. ZEBHAUSER FOR ROSENBERGER. DATE: 03/11/22
 NAME AND TITLE OF SIGNER: M. ZEBHAUSER

THE PERSON SIGNING THIS AGREEMENT REPRESENTS AND WARRANTS THAT (1) HE OR SHE IS DULY AUTHORIZED AND HAS LEGAL CAPACITY TO EXECUTE AND DELIVER AGREEMENT ON BEHALF OF ROSENBERGER, (2) THE EXECUTION AND DELIVERY OF THIS AGREEMENT AND THE PERFORMANCE OF ROSENBERGER PURSUANT TO THE TERMS OUTLINED ABOVE HAVE BEEN DULY AUTHORIZED AND THAT THIS AGREEMENT IS A VALID AND LEGAL AGREEMENT BINDING ON MARCH 11, 2022 AND ENFORCEMENT IN ACCORDANCE WITH ITS TERMS.

NO WARRANTIES OR INDEMNITIES OF ANY KIND ARE MADE OR IMPLIED BY ROSENBERGER OR EWCAP. IN PARTICULAR THERE ARE NO EXPRESS OR IMPLIED WARRANTIES OF FITNESS FOR A PARTICULAR PURPOSE, MERCHANTABILITY, NON-INFRINGEMENT OR ANY OTHER WARRANTY OF ANY KIND. IN ADDITION, THERE ARE NO EXPRESS OR IMPLIED WARRANTIES OR INDEMNITIES OF ANY KIND RELATING TO THIRD PARTY CLAIMS ARISING UNDER THE INTELLECTUAL PROPERTY LAWS OF ANY COUNTRY. ANYONE USING THE INFORMATION IN THIS DRAWING DOES SO AT THEIR OWN RISK.

APPLICABLE EWCAP DRAWING NUMBERS:
 888-U-001-1-Z02

Rosenberger
 D-84526 Tittmoning
 Germany

TOLERANCES (UNLESS OTHERWISE SPECIFIED)		THIRD ANGLE PROJECTION	
DIMENSIONS ARE IN MILLIMETERS			
DIMENSIONING AND TOLERANCE IN ACCORDANCE WITH ASME Y14.5-2009			
<i>USCAR-EWCAP</i>			
SCALE ---	DRAWN BY S. STROM	CHECKED BY C. SCHMIDT	DATE 03/11/22
TITLE HIGH SPEED MINI WATERPROOF-DOUBLE INTERFACE COAX CONNECTOR. 50 OHM.			
SHEET 3 of 3	DRAWING NUMBER 888-S-002-1-Z01	SIZE A2	REVISION LEVEL A
		DO NOT SCALE DRAWING COMPUTER AIDED DRAWING	