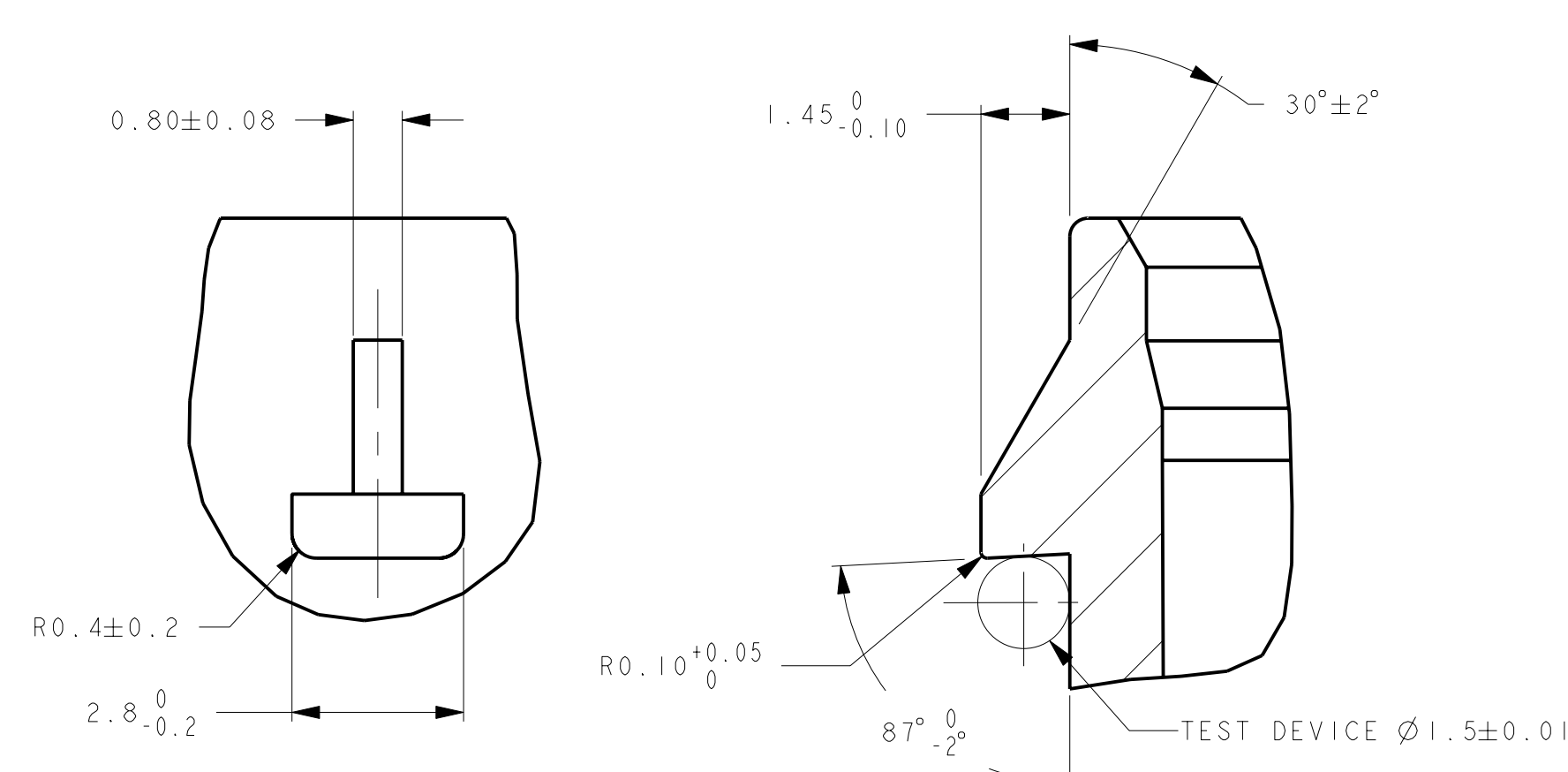


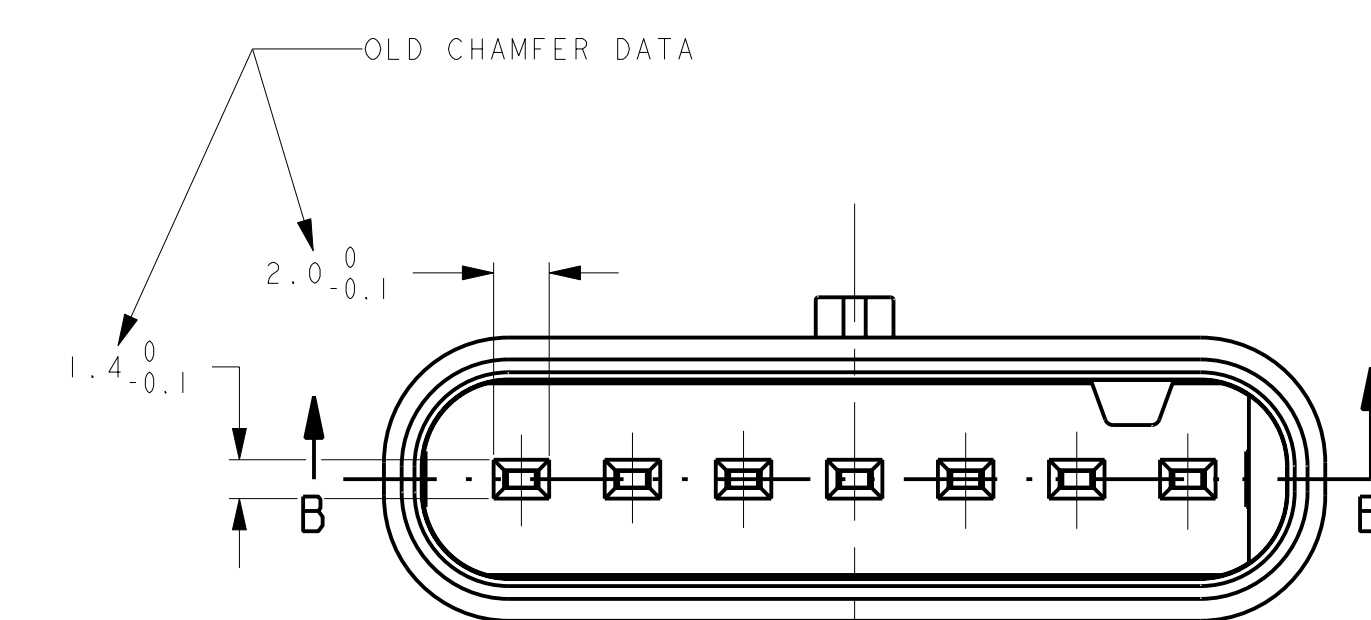
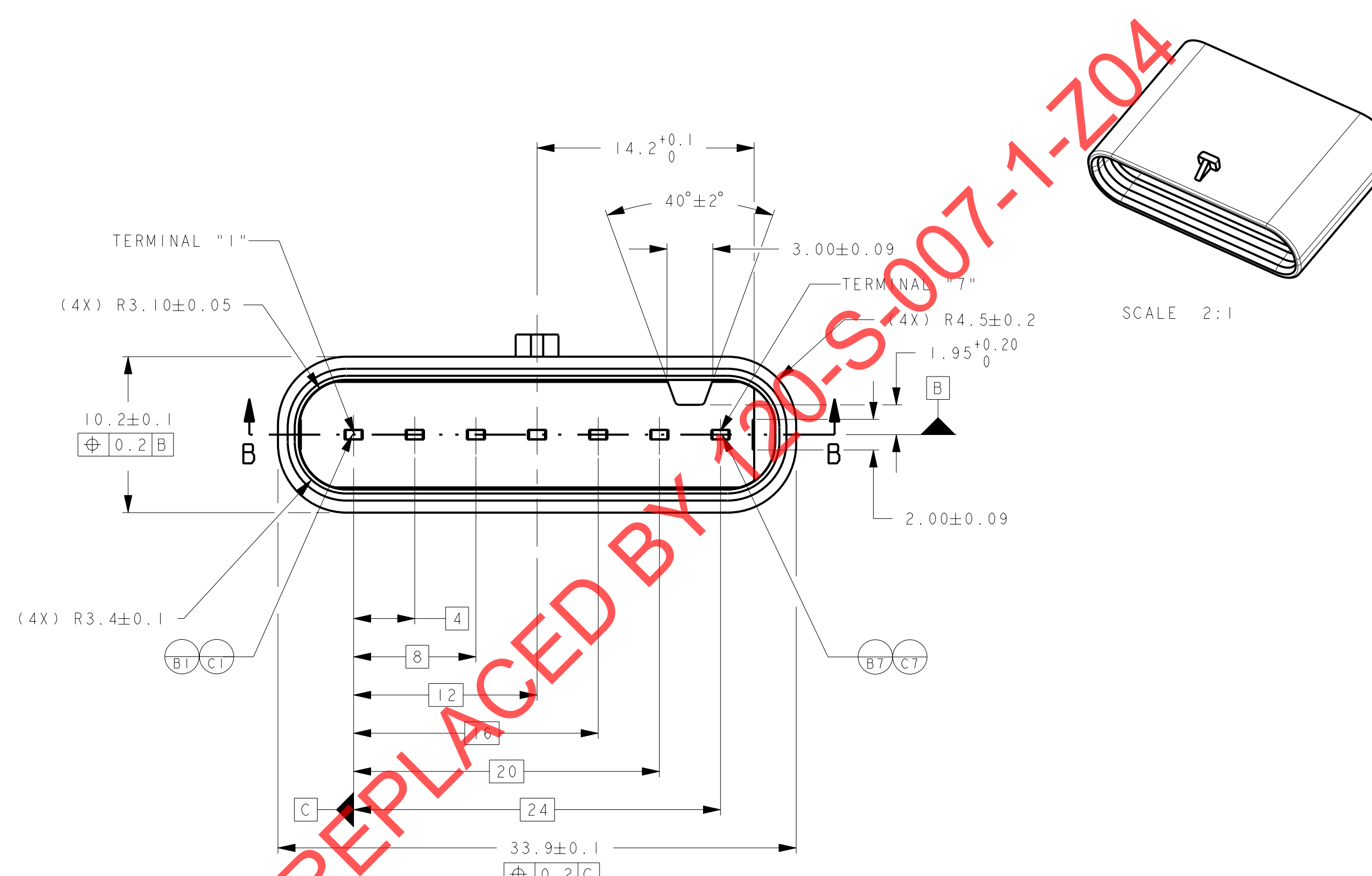
IF THE HEADER IS RECESSED INTO A POCKET, THESE DIMENSIONS REPRESENT THE MINIMUM CLEARANCE REQUIRED FOR THE MATING CONNECTOR SHROUD

NOTICE

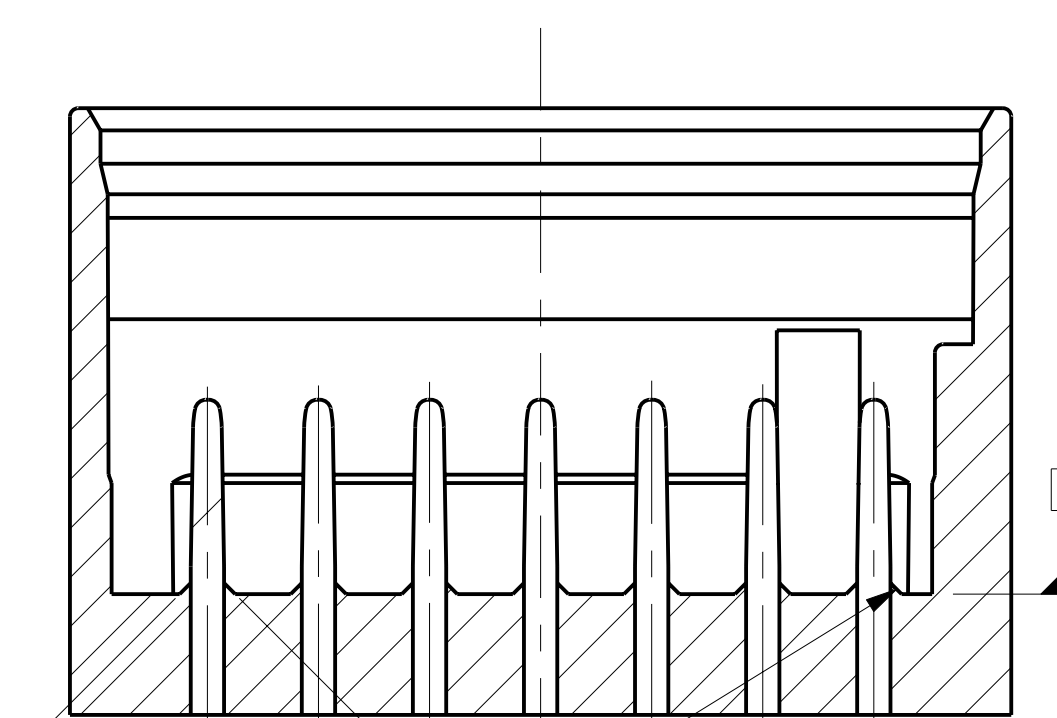
THIS DRAWING, OR PORTIONS OF IT, ARE CONTROLLED BY THE ELECTRICAL WIRING COMPONENTS APPLICATION PARTNERSHIP (EWCAP), A SUBGROUP OF THE UNITED STATES CONSORTIUM FOR AUTOMOTIVE RESEARCH (USCAR). USCAR PARTNERSHIP BETWEEN GENERAL MOTORS CORPORATION, FORD MOTOR COMPANY, AND CHRYSLER CORPORATION. ANY CHANGE TO A EWCAP CONTROLLED PORTION OF THIS DRAWING, INCLUDING A "RECORD CHANGE," MUST BE APPROVED, IN WRITING, BY THE RESPONSIBLE EWCAP MEMBER FROM EITHER COMPANY. THE MEMBER OF EITHER COMPANY WHO SIGNED FOR HIS OR HER COMPANY IS RESPONSIBLE FOR OBTAINING ALL NECESSARY APPROVALS WITHIN THAT COMPANY PRIOR TO SIGNING FOR APPROVAL OF THE CHANGE. EWCAP EXPRESSLY PROHIBITS ANYONE FROM CHANGING EITHER ANY EWCAP CONTROLLED PORTION OF THIS DRAWING OR ANY ASSOCIATED TOOLING BEFORE RECEIVING AN APPROVAL SIGNED BY AN AUTHORIZED REPRESENTATIVE FROM EACH EWCAP PARTNER. REFERENCE TO THE SIGNED APPROVAL FORM MUST BE ENTERED IN THIS DRAWING'S CONTROL COLUMN.



LATCH CONSTRUCTION



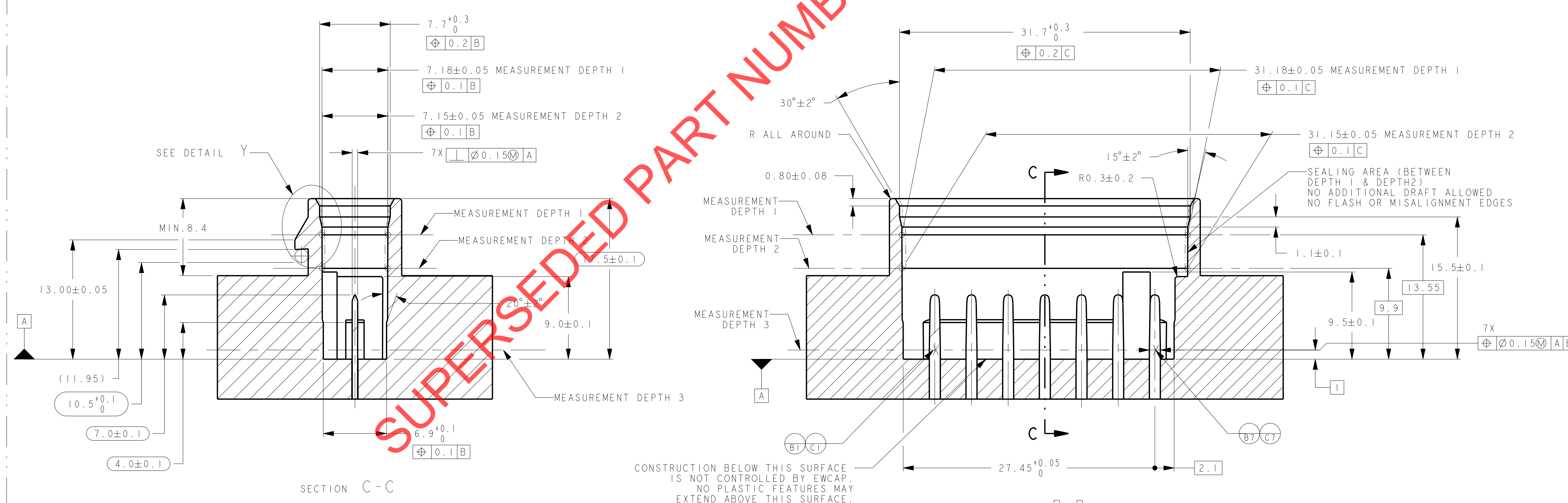
—SECOND LOCK UP FEATURE NOT TO BE INCLUDED ON NEWLY TOOLED HEADERS, BUT THIS FEATURE MAY BE PRESENT ON OLDER HEADERS.



—SECOND LOCK UP FEATURE NOT TO BE INCLUDED ON NEWLY TOOLED HEADERS, BUT THIS FEATURE MAY BE PRESENT ON OLDER HEADERS.

SECTION B - E

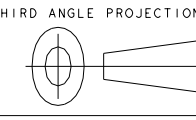
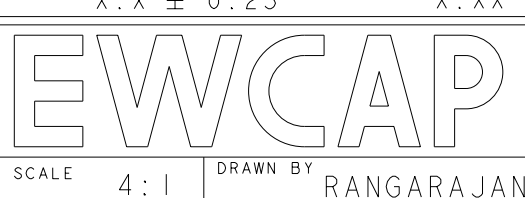
PROVIDED FOR INFORMATIONAL PURPOSES ONLY




SECTION B-B

NOTES: UNLESS OTHERWISE SPECIFIED

1. ALL DIMENSIONS SHOWN IN MILLIMETERS.
2. DIMENSIONING AND TOLERANCING PER ASME Y14.5M-1994
3. RADIi ON ALL CORNERS SHOWN SHARP OR ALL UNSPECIFIED RADIi: 0.25 EXCEPT AS NOTED.
4. A FULL SPOOLD ON THE MATING CONNECTOR IS REQUIRED TO ASSURE THAT THE CONNECTOR HEADER POLYMERIZATION FEATURES (OPTIONAL) AND THE FUNCTION OF THE FULL SPOOLD ALSO PREVENTS SCOOP DAMAGE TO THE HEADER PINS. REFER TO SAE EWCAP-42 FOR CONCEPT DESIGN GUIDE LINES" FOR ADDITIONAL INFORMATION.
5. REFER TO USCAR/EWCAP PART LIST AS FOUND ON WEBSITE [HTTP://WWW.USCARTEAMS.ORG](http://www.uscarteams.org)
6. FOR BLADE BASE MATERIAL, PLATING AND PROCESS LUBRICANT SEE EWCAP DRW. NO. EWCAP-001
7. THIS PART HAS BEEN PREVIOUSLY DESIGNED AND TOOLED WITH THE DATUM REFERENCES AS SHOWN. THE DATUM REFERENCE USED ON THIS DRAWING TAKES PRECEDENCE OVER THE EWCAP DRAWING DATE AND DATUM REFERENCE.

099	C	ADDED NOTE CHANGING STATUS TO NOT RECOMMENDED	12-13-13	SR	MO
082	B	ADDED KEYING OPTIONS E,F,G & H AND ADDED NOTE FOR CONSTRUCTION BELOW DATUM A	05-19-10	SR	FA
-	A	RELEASED	01-08-09	SR	FA
CHANGE SERIAL NUMBER	LET	REVISION RECORD	DATE	DWN	CH
TOLERANCES (UNLESS OTHERWISE SPECIFIED):			 THIRD ANGLE PROJECTION		
DIMENSIONS ARE IN MILLIMETERS					
X . X ± . 025 X . XX ± 0 . 10					
X . X ± . 025 X . XX ± 0 . 10					
					
SCALE: 4:1		DRAWN BY: RANGARAJAN		CHECKED BY: FRANK HOLUB	
TITLE:		DATE: 11-20-20			
		DIRECT CONNECT INTERFACE 3WAY (1 X 7) 1.2MM SEALED MALE			
SHEET: DRAWING NUMBER:		SIZE: E		REVISION: C	
1 of 1 120-S-007-1-201		DO NOT SCALE DRAWING COMPUTER AIDED DRAWING			



PCIO563824

NOT RECOMMENDED FOR NEW APPLICATIONS. SEE 120-S-007-1-Z04