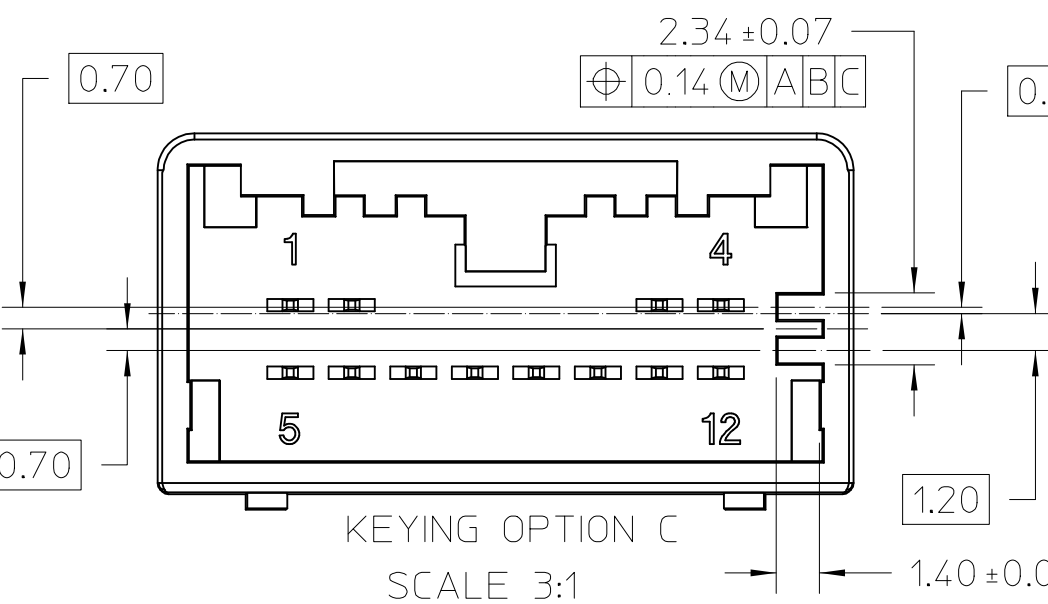
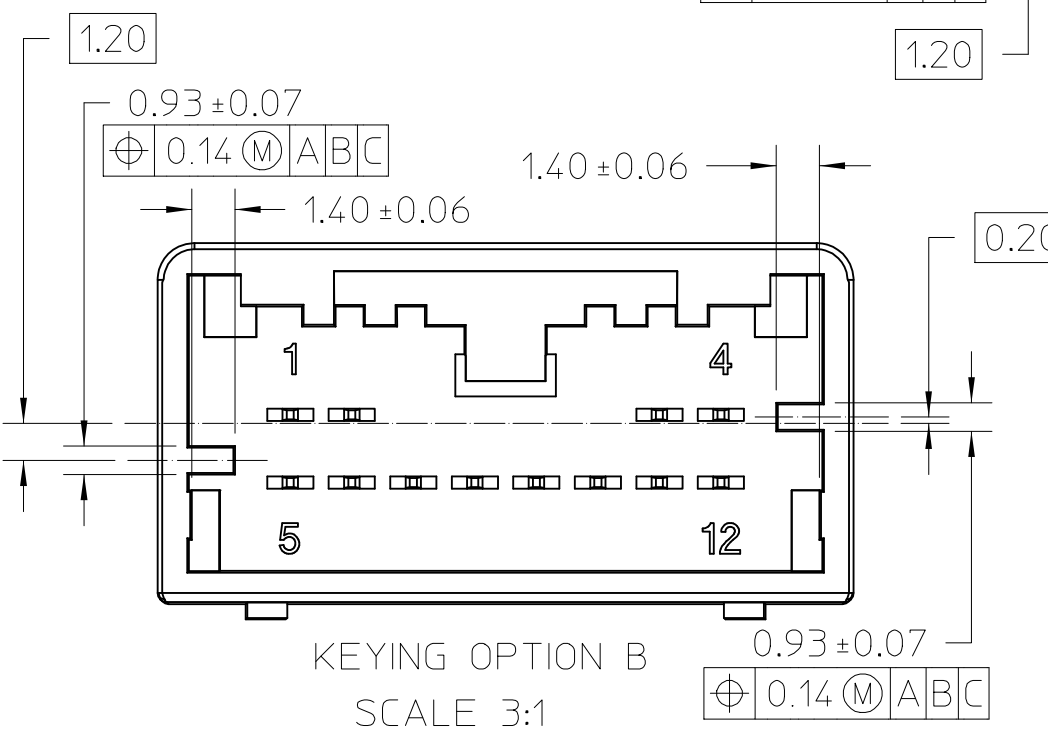
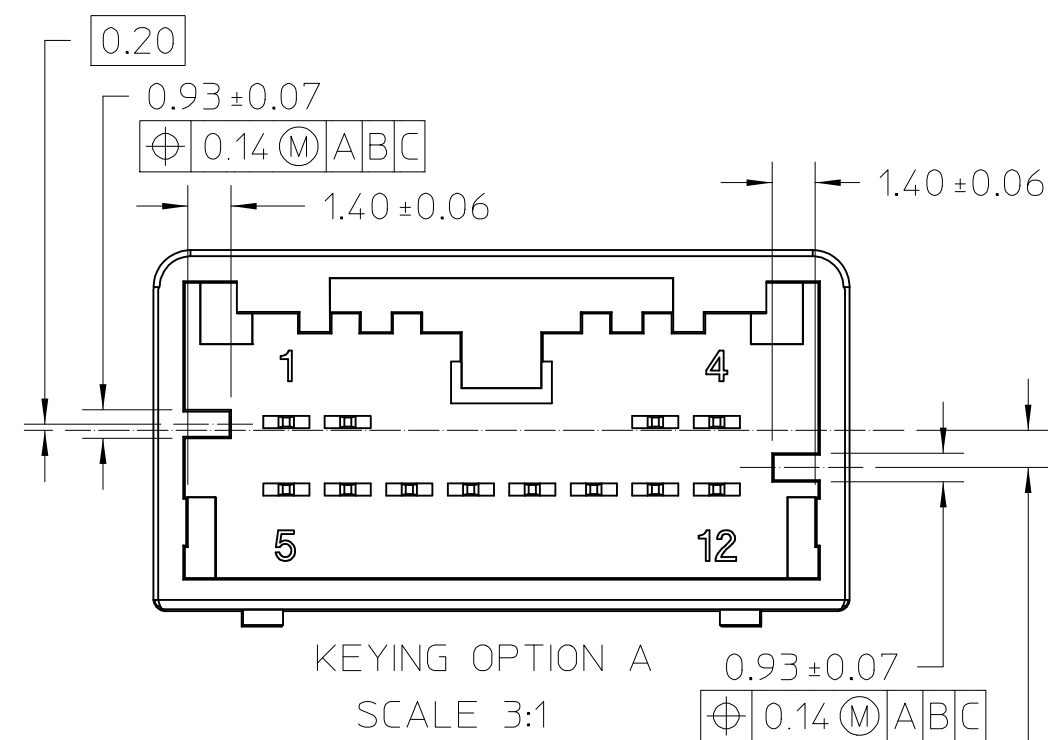
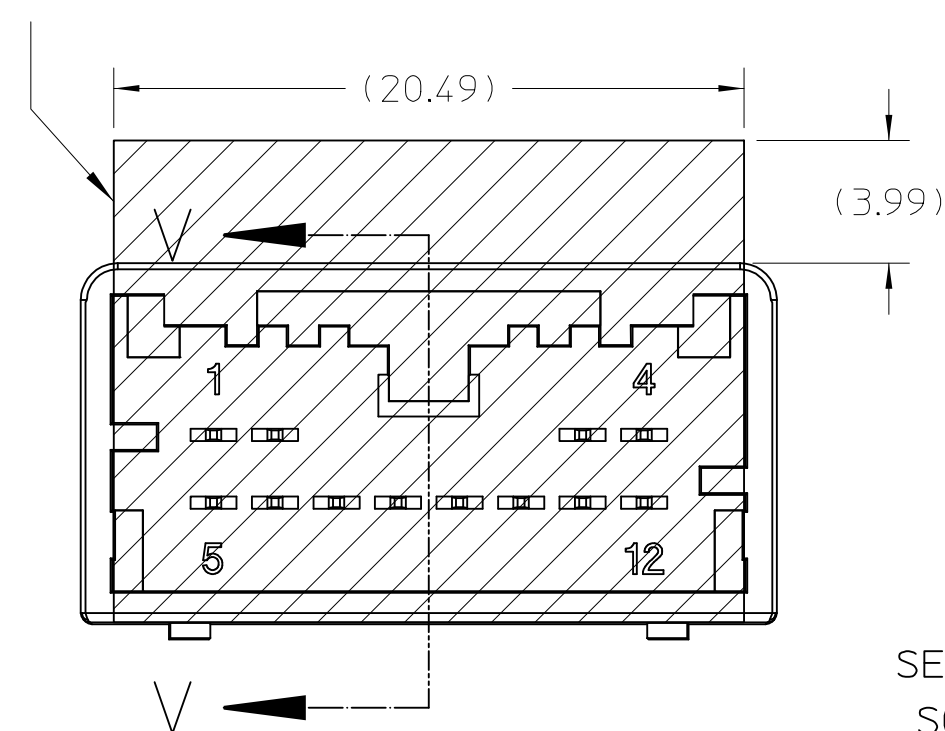


INDEX OPTIONS

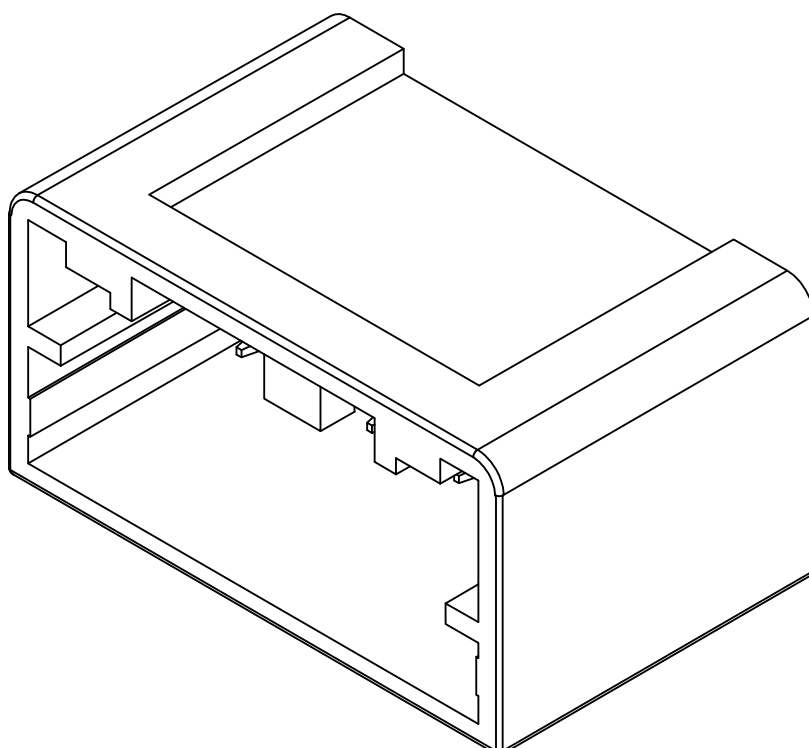
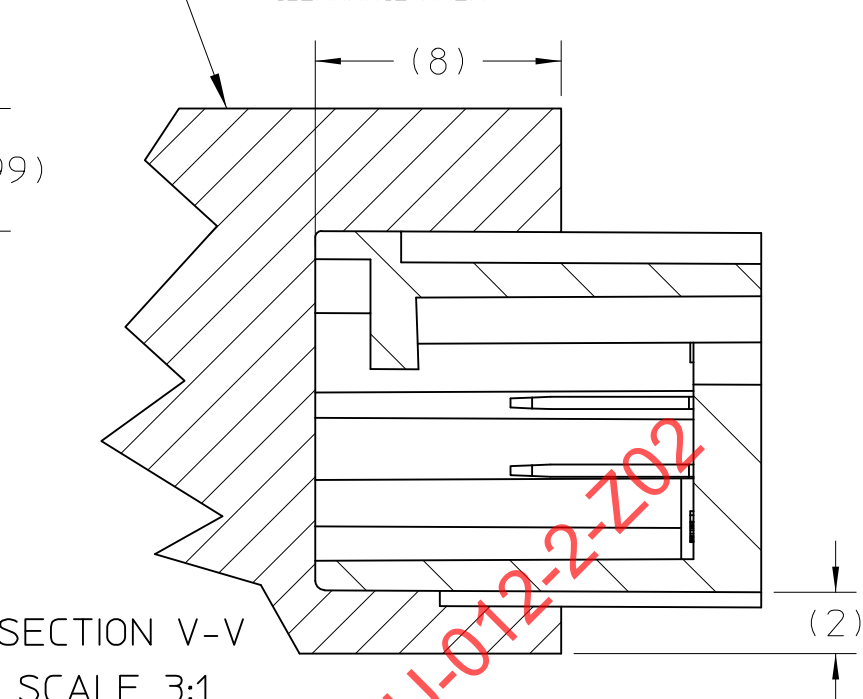
PACKAGING VIEW



REQUIRED FEMALE CONNECTOR  
CLEARANCE AREA



REQUIRED FEMALE CONNECTOR  
CLEARANCE AREA




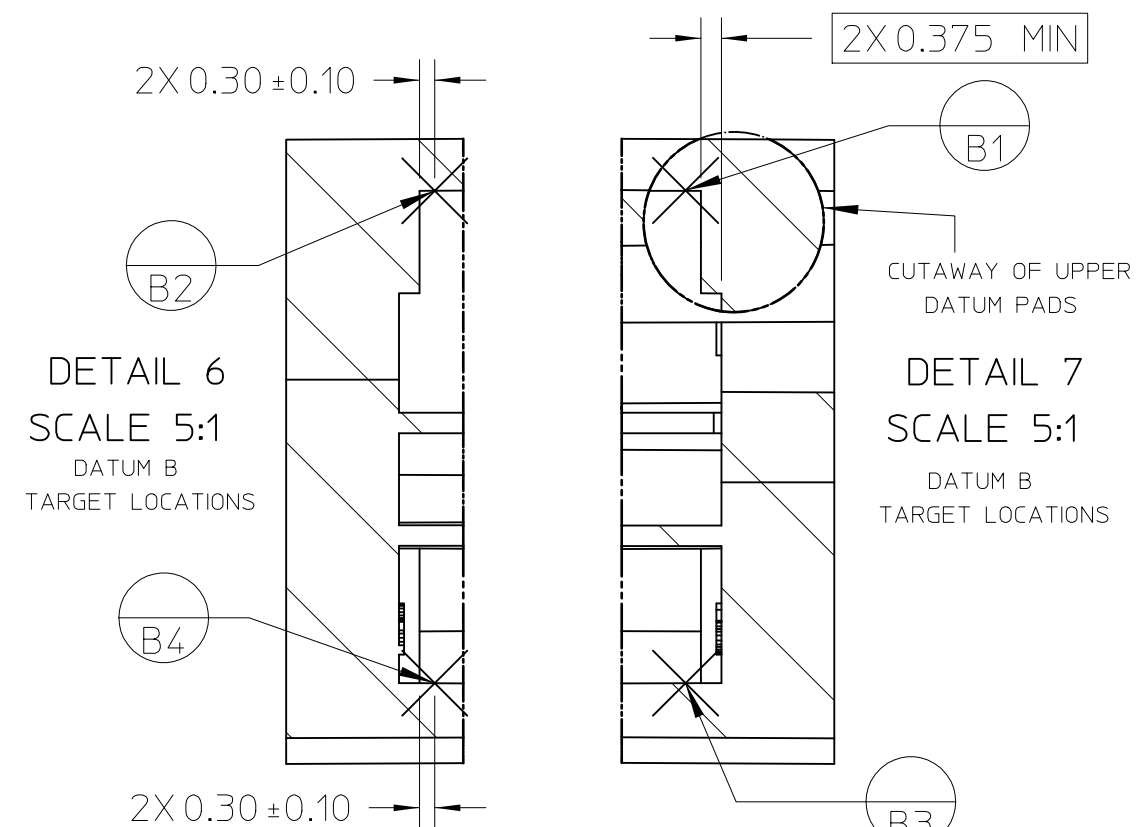
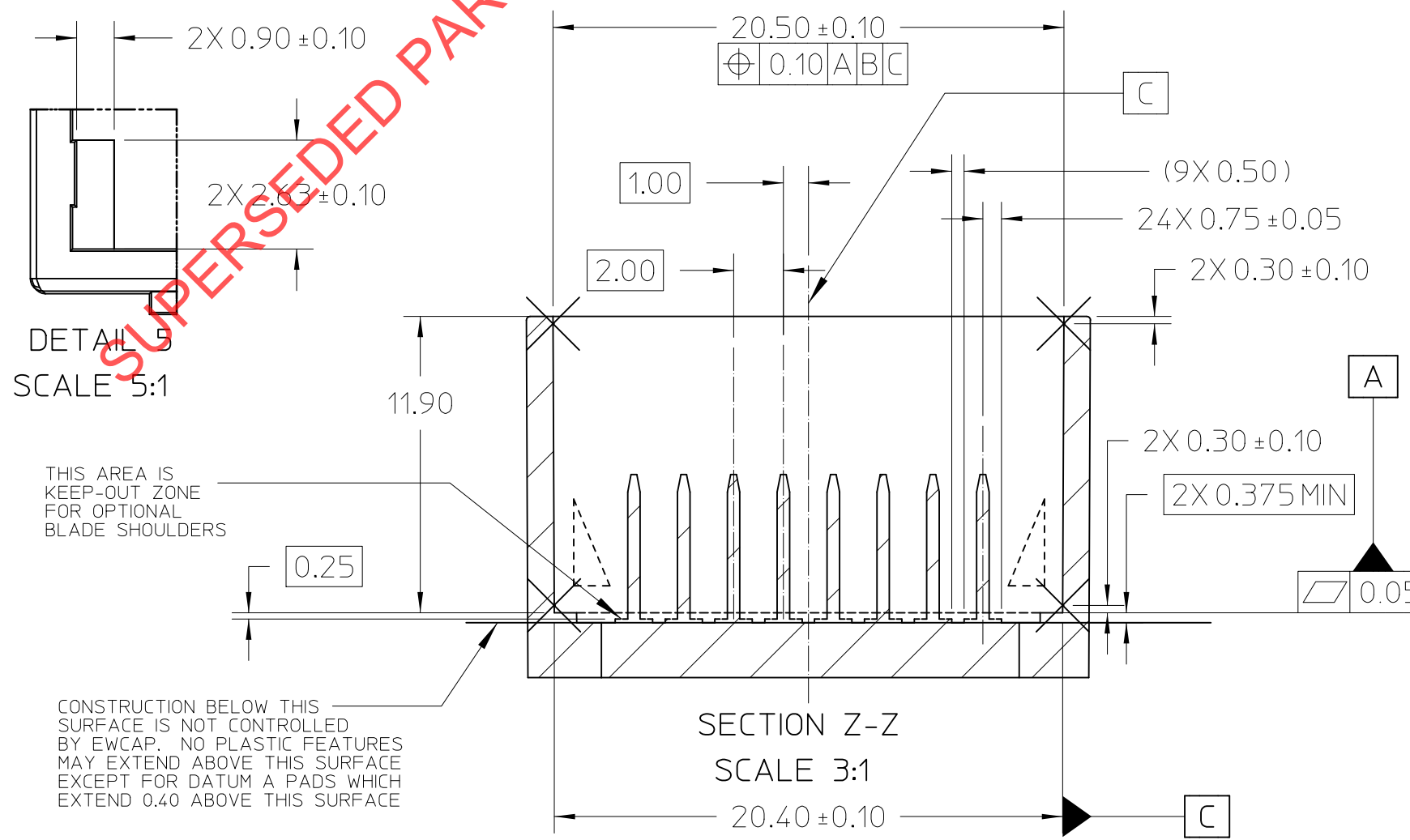
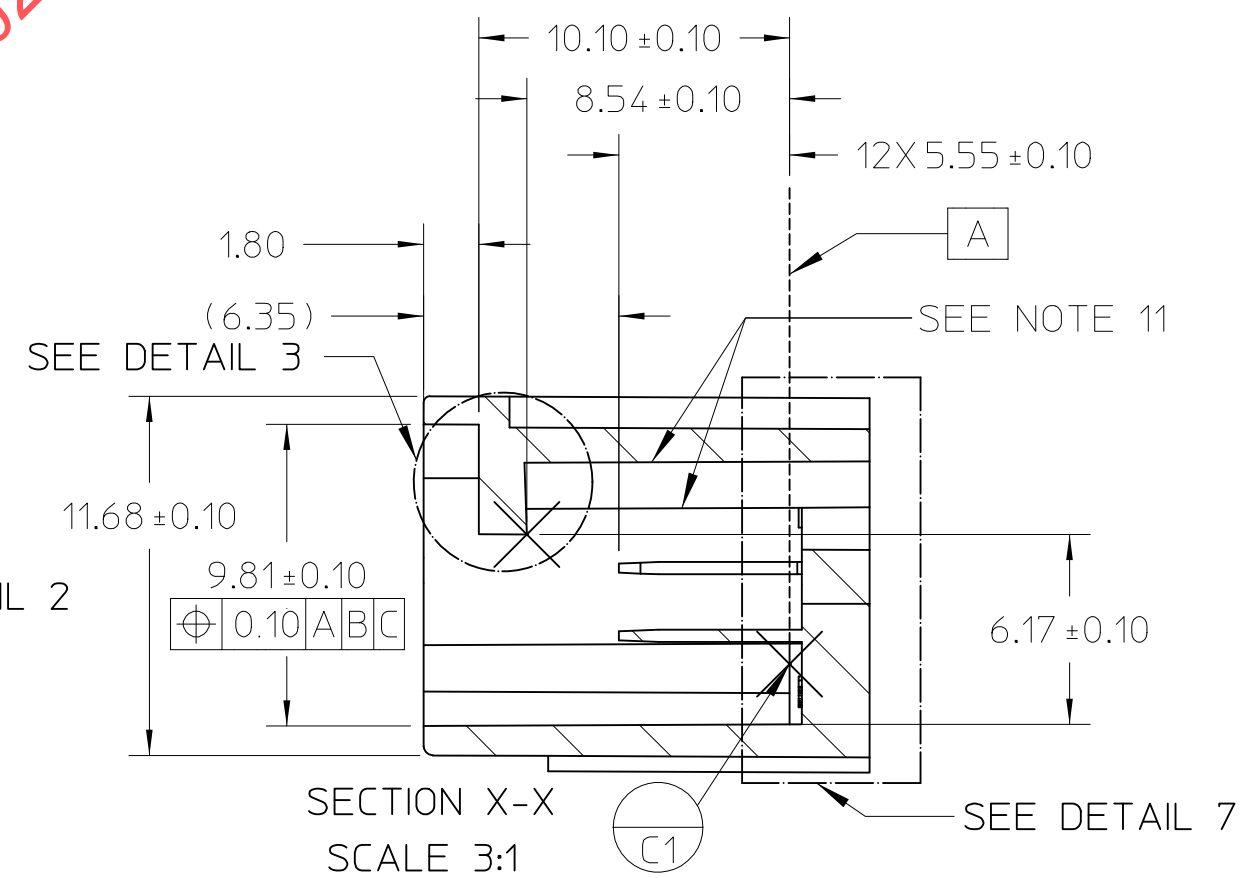
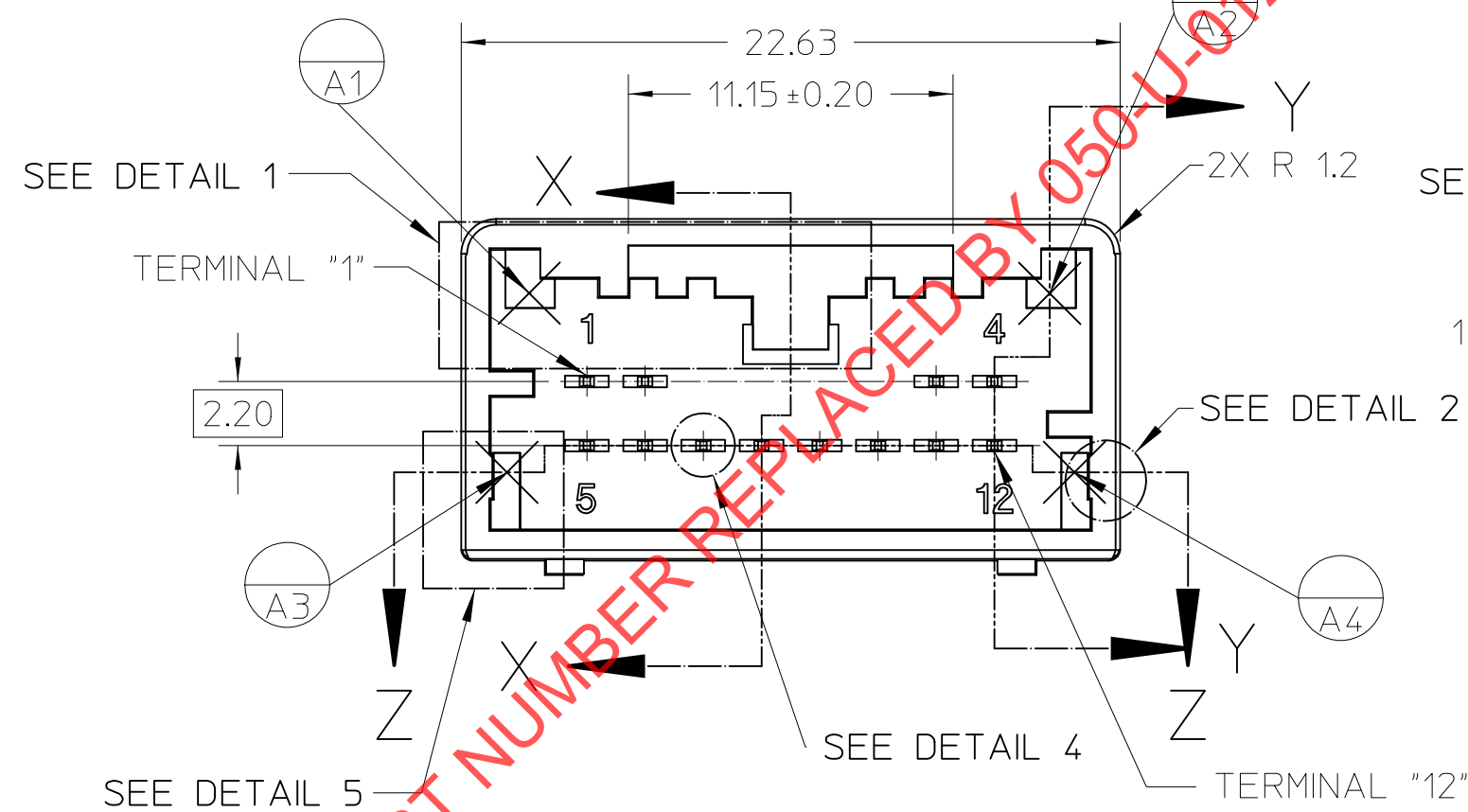
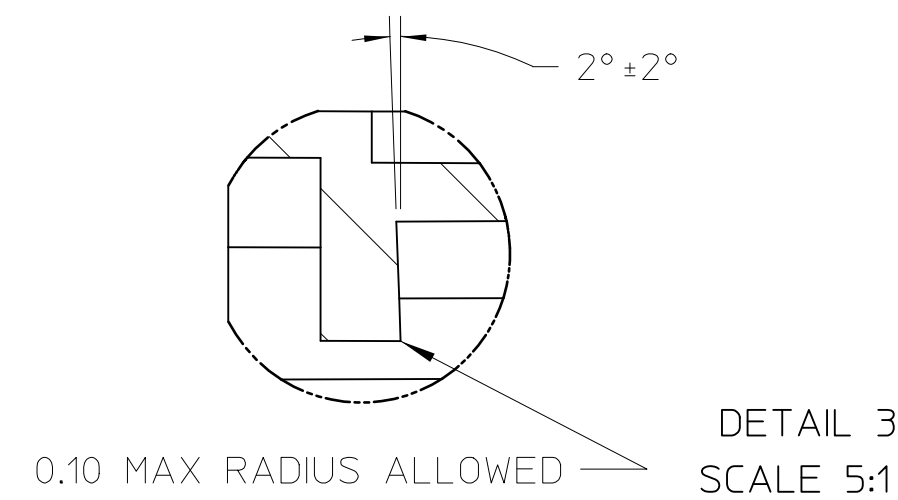
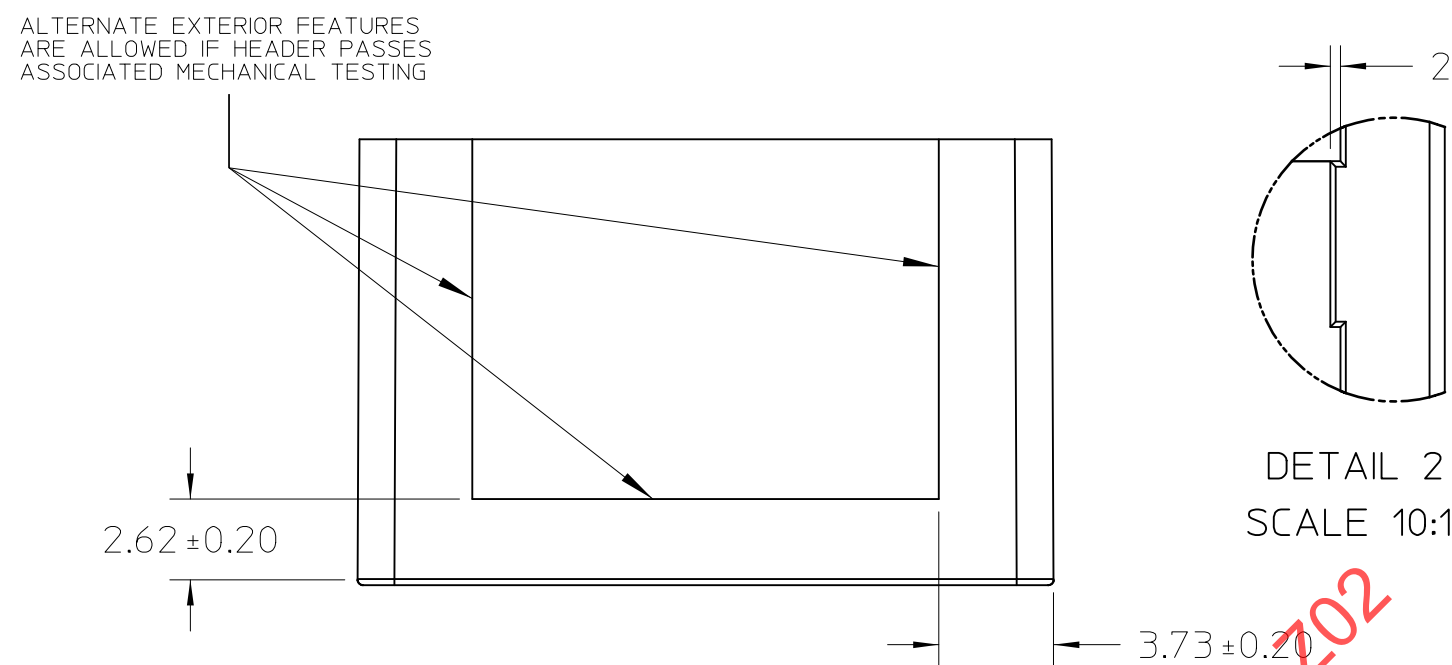
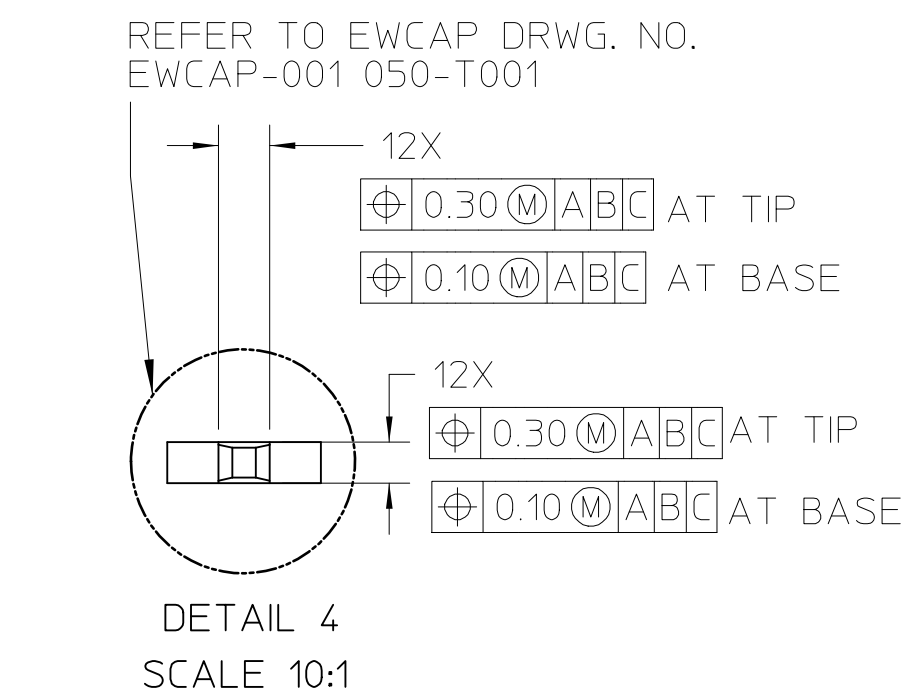
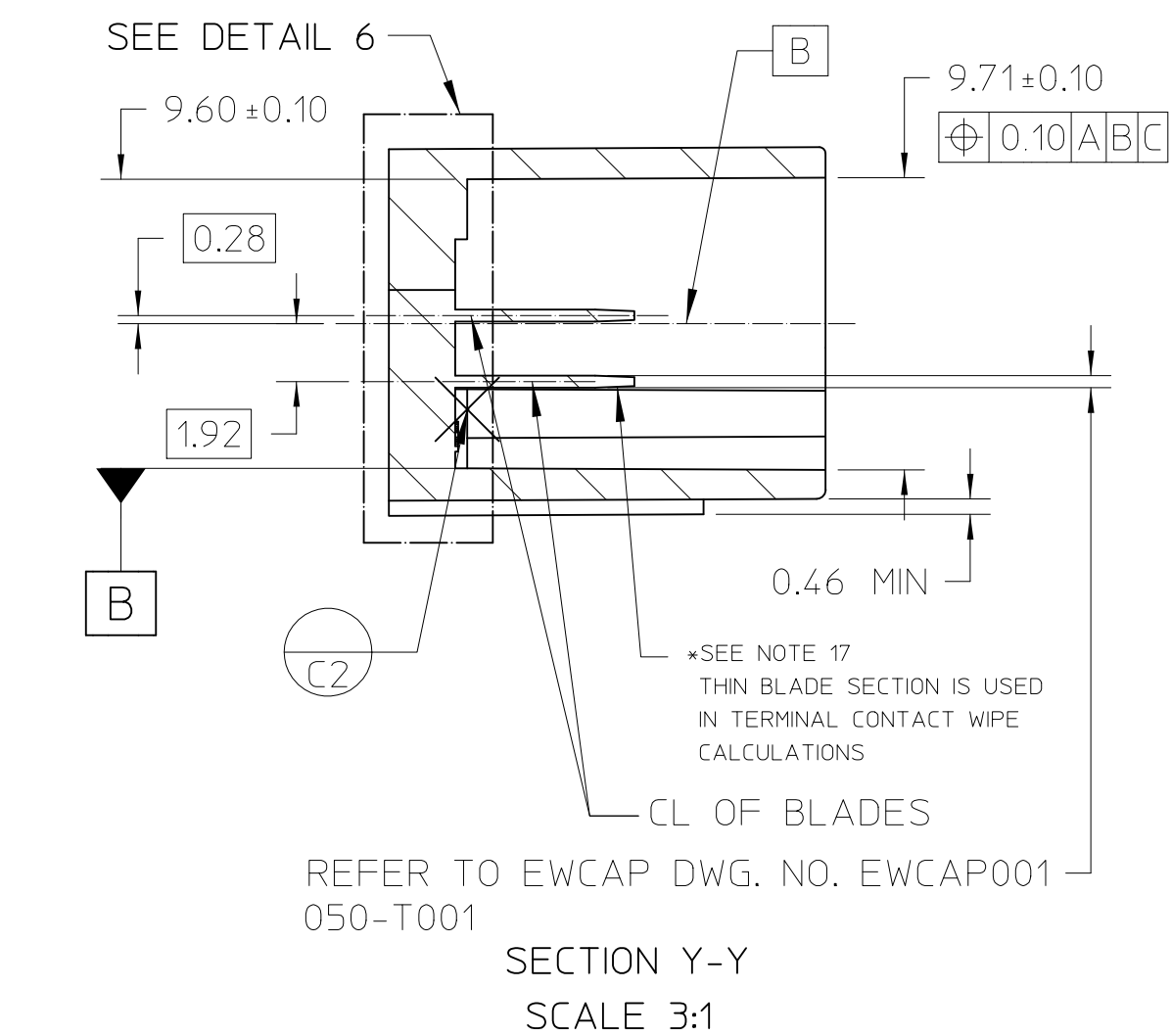
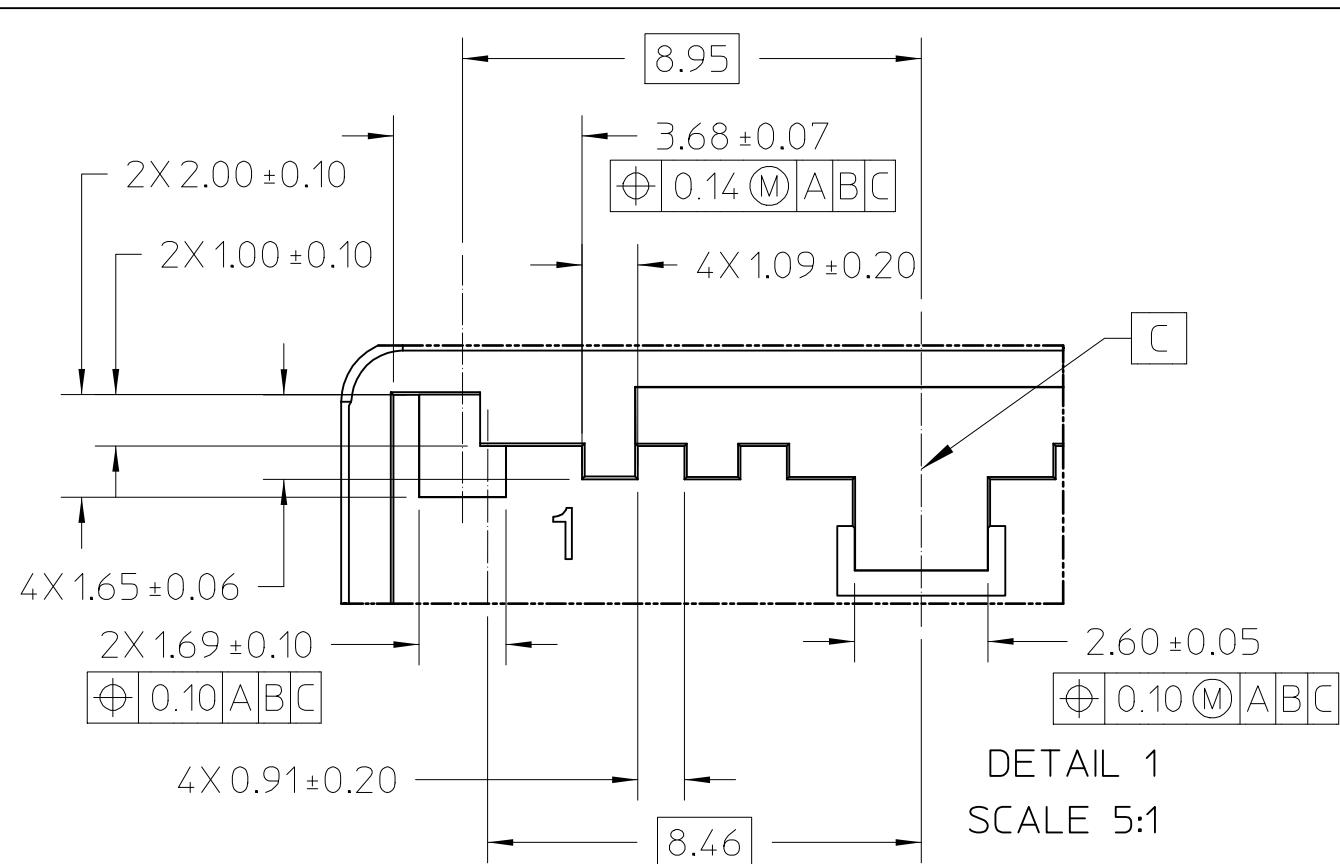
NOTES: UNLESS OTHERWISE SPECIFIED

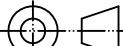
1. ALL DIMENSIONS SHOWN IN MILLIMETERS.
2. DIMENSIONING AND TOLERANCING PER ASME Y14.5M-2009
3. 0.20 RADII MAX ON ALL CORNERS SHOWN SHARP.
4. UNSPECIFIED RADII: 0.30 MAX EXCEPT AS NOTED.
5. STANDARD COLORS FOR POLARIZATION (SEE CHART).  
DEVIATION REQUIRES APPROVAL OF AUTHORIZED PERSON.
6. REFER TO "SAE/USCAR - 12 CONNECTOR GUIDELINES"  
FOR ADDITIONAL REQUIREMENTS.
7. EXCEPT WHERE NOTED, DRAFT ON OUTSIDE SURFACES IS PERMISSIBLE  
WITHIN TOLERANCE.
8. SYMBOL INDICATES DRAFT DIRECTION.
9. FOR TERMINAL MATERIAL, DIMENSIONAL, AND COATING REQUIREMENTS  
AND ANY BLADE TERMINAL DESIGN INFORMATION NOT SHOWN ON THIS  
DRAWING SEE EWCAP DWG. NO. EWCAP-001
10. TO CLAIM USCAR COMPLIANCE, PARTS DESIGNED AND PRODUCED TO  
THIS FOOTPRINT DRAWING MUST BE TESTED TO AND MEET THE  
REQUIREMENTS OF SAE/USCAR - 2.
11. REVERSE DRAFT PERMISSIBLE IN LATCH DETAILS.
12. REFER TO USCAR/EWCAP PART LIST AS FOUND ON WEBSITE  
<http://www.uscarteams.org>
13. THIS IS A 100% CAD GENERATED PART. THE CAD MATHEMATICAL DATA  
IS THE MASTER FOR THIS PART. FOR DIMENSIONAL OR ANY INFORMATION  
NOT SHOWN ON THIS DRAWING, ANALYZE THE CAD MODEL.
14. INTERFACE APPLIES TO DISCRETE HEADERS ONLY.  
ENTIRE HEADER MUST SINGLE PIECE AND NOT INCORPORATED INTO  
A LARGER MODULE.
15. DESIGN IS NOT CPA CAPABLE.
16. CONNECTOR LOCK OVERTRAVEL OF 0.15MM MINIMUM IS ALLOWED.
17. PROVIDE FOR A MINIMUM OF 0.7MM MINIMUM RSS TERMINAL ENGAGEMENT  
BEGINNING ON THE THIN BLADE SECTION BEYOND THE MALE TERMINAL  
COINED EDGE. THE MATING FEMALE CONNECTOR SHALL BE PULLED ALL  
THE WAY BACK IN THE HEADER CAVITY AND THE FEMALE TERMINAL  
SHALL BE PULLED ALL THE WAY BACK IN THE FEMALE CONNECTOR  
CAVITY.

SUPERSEDED PART NUMBER REPLACED BY 050-U-012-2-Z02

molex®

CHANGE SERIAL NUMBER	A	INITIAL RELEASE	3-26-12	TM	SM
	LET	REVISION RECORD	DATE	DWN	CHK
	TOLERANCES (UNLESS OTHERWISE SPECIFIED): DIMENSIONS ARE IN MILLIMETERS			<div>THIRD ANGLE PROJECTION</div> 	
	ANGLES ±3°				
	.X±0.25				
			.XX±0.13		
EWCAP					
SCALE	3 - 1	DRAWN BY	T. MACHUGA	CHECKED BY	S. MARCEAU
TITLE				DATE	
12 WAY UNSEALED INTERFACE 0.50 MM CONNECTORS					
SHEET	DRAWING NUMBER		SIZE	REVISION LEVEL	
1 of 3	050-U-012-2-Z01		B	A	
DO NOT SCALE DRAWING COMPUTER AIDED DRAWING					



TOLERANCES (UNLESS OTHERWISE SPECIFIED)				<div>THIRD ANGLE PROJECTION</div> 	
DIMENSIONS ARE IN MILLIMETERS					
ANGLES ±3°					
X±0.25		XX±0.13			
<div>EWCAP</div>					
SCALE 3 - 1		DRAWN BY T. MACHUGA		CHECKED BY S. MARCEAU	
				DATE 8-8-12	
TITLE					
12 WAY UNSEALED INTERFACE					
0.50 MM CONNECTORS					
SHEET 2 of 3		DRAWING NUMBER 050-U-012-2-Z01		SIZE B	
				DO NOT SCALE DRAWING COMPUTER AIDED DRAWING	
				REVISION LEVEL A	

molex®

STANDARD NOTICE

THIS DRAWING, OR PORTIONS OF IT ARE CONTROLLED BY THE ELECTRICAL WIRING COMPONENTS APPLICATION PARTNERSHIP (EWCAP) A SUBGROUP OF THE UNITED STATES CONSORTIUM FOR AUTOMOTIVE RESEARCH LLC (USCAR LLC).

USCAR IS AN LLC CONSISTING OF MEMBERS FROM CHYSLER GROUP, FORD MOTOR COMPANY, AND GM COMPANY.

ANY CHANGE TO A EWCAP CONTROLLED PORTION OF THIS DRAWING INCLUDING A REVISION RECORD CHANGE MUST BE APPROVED, IN WRITING, BY THE RESPONSIBLE EWCAP REPRESENTATIVE FROM EACH USCAR MEMBER COMPANY. EACH EWCAP REPRESENTATIVE AUTHORIZED TO SIGN FOR HIS OR HER COMPANY IS RESPONSIBLE FOR OBTAINING ALL NECESSARY APPROVALS WITHIN THAT COMPANY PRIOR TO SIGNING FOR APPROVAL OF THE CHANGE.

EWCAP EXPRESSLY PROHIBITS ANY PARTY FROM CHANGING EITHER ANY EWCAP CONTROLLED PORTION OF THIS DRAWING OR ANY ASSOCIATED TOOLING BEFORE RECEIVING AN APPROVAL, SIGNED BY THE AUTHORIZED REPRESENTATIVES, OF THE USCAR MEMBER COMPANIES. REFERENCE TO THE SIGNED CHANGE NOTICE MUST BE ENTERED IN THE DRAWING CONTROL COLUMN.

SUPERSEDED PART NUMBER REPLACED BY 050-U-012-2-Z02



TOLERANCES (UNLESS OTHERWISE SPECIFIED)		THIRD ANGLE PROJECTION	
DIMENSIONS ARE IN MILLIMETERS			
ANGLES ±3°			
.X±0.25		.XX±0.13	
<b>EWCAP</b>			
SCALE 3 - 1	DRAWN BY T. MACHUGA	CHECKED BY S. MARCEAU	DATE 3-26-12
TITLE 12 WAY UNSEALED INTERFACE 0.50 MM CONNECTORS			
SHEET 3 of 3	DRAWING NUMBER 050-U-012-2-Z01	SIZE B	DO NOT SCALE DRAWING COMPUTER AIDED DRAWING
			REVISION LEVEL A