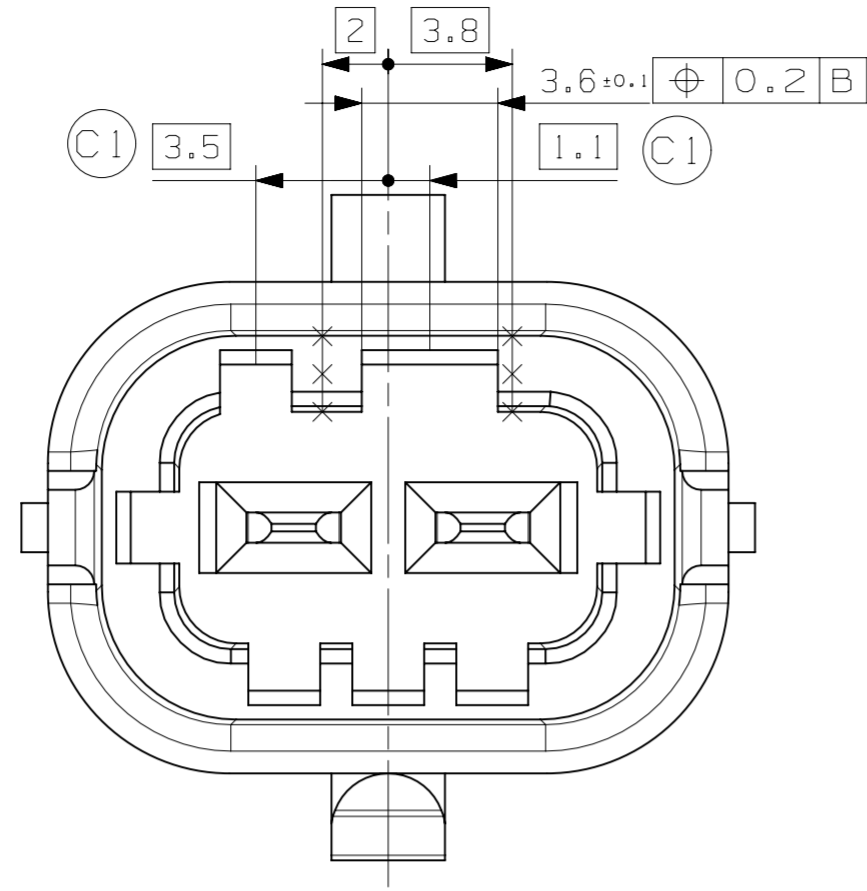
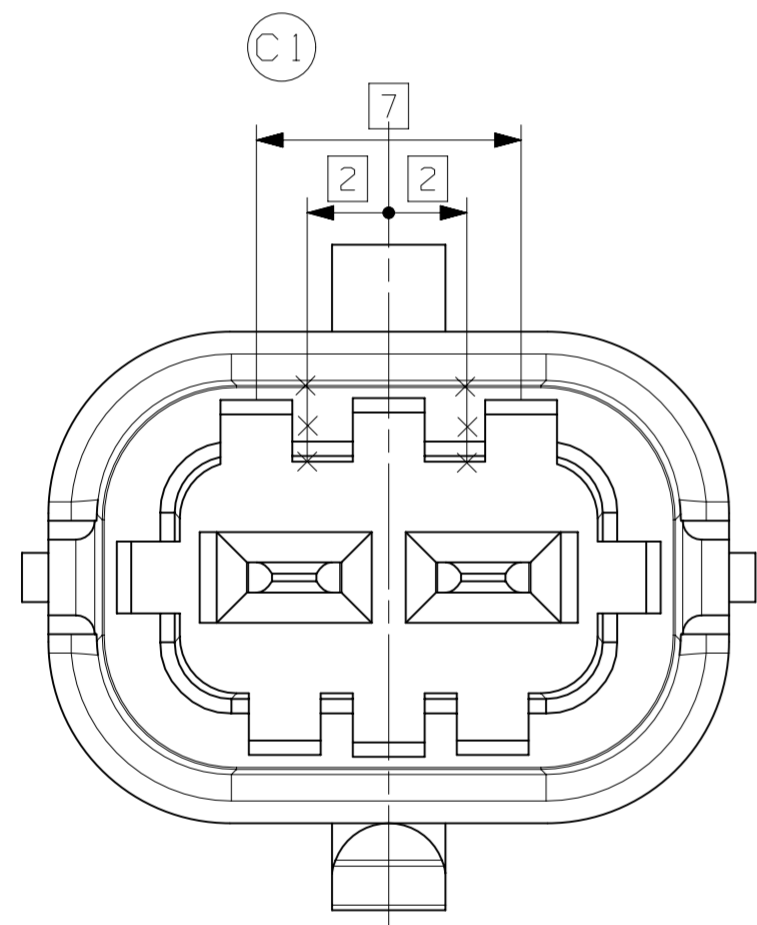


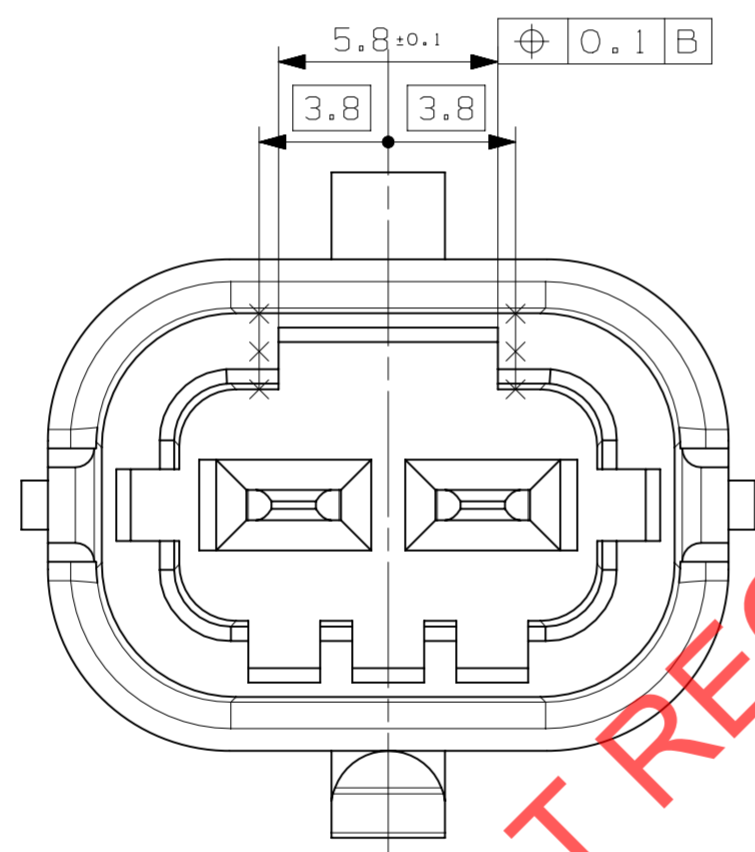
KEYING OPTION C (5:1)



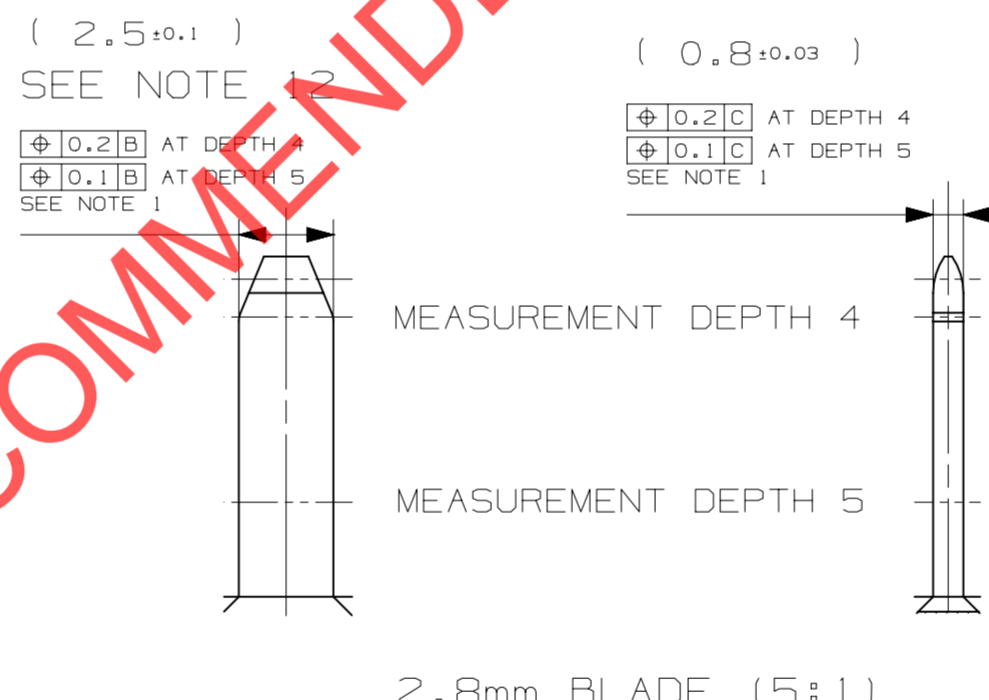
KEYING OPTION D (5:1)



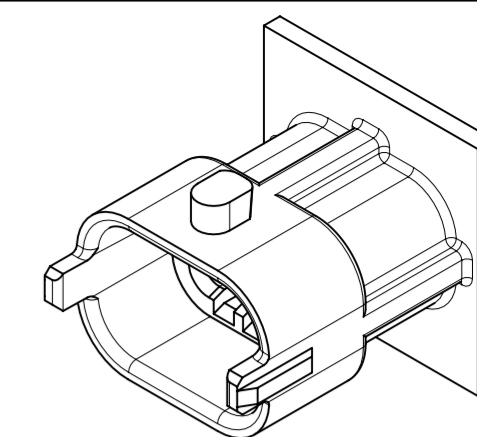
KEYING OPTION A (5:1)



KEYING OPTION B (5:1)



2.8mm BLADE (5:1)



SCALE 2:1

NOTICE

THIS DRAWING, OR PORTIONS OF IT, ARE CONTROLLED BY THE ELECTRICAL WIRING COMPONENTS APPLICATION PARTNERSHIP (EWCAP), A SUBGROUP OF THE UNITED STATES COUNCIL FOR AUTOMOTIVE RESEARCH LLC (USCAR LLC).

USCAR IS A LLC CONSISTING OF MEMBERS FROM CHRYSLER GROUP LLC, FORD MOTOR COMPANY, AND GM CORPORATION.

ANY CHANGE TO A EWCAP CONTROLLED PORTION OF THIS DRAWING, INCLUDING A REVISION RECORD MUST BE APPROVED, IN WRITING, BY THE RESPONSIBLE EWCAP REPRESENTATIVE FROM EACH USCAR MEMBER COMPANY.

EACH EWCAP REPRESENTATIVE AUTHORIZED TO SIGN FOR HIS OR HER MEMBER COMPANY IS RESPONSIBLE FOR OBTAINING ALL NECESSARY APPROVALS WITHIN THAT COMPANY PRIOR TO SIGNING FOR THE APPROVAL OF THE CHANGE.

EWCAP EXPRESSLY PROHIBITS ANY PARTY FROM CHANGING EITHER ANY EWCAP CONTROLLED PORTION OF THIS DRAWING OR ANY ASSOCIATED TOOLING BEFORE RECEIVING APPROVAL, SIGNED BY THE AUTHORIZED REPRESENTATIVES, OF THE USCAR MEMBER COMPANIES. REFERENCE TO THE SIGNED CHANGE NOTICE MUST BE ENTERED IN THE DRAWING CONTROL COLUMN.

NOT RECOMMENDED BY OEMS

NOTES: UNLESS OTHERWISE SPECIFIED

1. DIMENSIONING AND TOLERANCING PER ASME Y14.5M.
2. 0.25 MAX RADIUS ON ALL CORNERS SHOWN SHARP.
3. ALL UNSPECIFIED RADIUS 0.25 MAX.
4. STANDARD COLORS FOR POLARIZATION (SEE CHART IN LEFT LOWER CORNER OF THE DRAWING SHEET)
5. REFER TO "SAE/USCAR 12 CONNECTOR DESIGN CRITERIA" FOR ADDITIONAL REQUIREMENTS.
6. EXCEPT WHERE NOTED, DRAFT ON OUTSIDE SURFACES IS PERMISSIBLE WITHIN TOLERANCE.
7. SYMBOL INDICATES DRAFT DIRECTION.
8. FOR TERMINAL MATERIAL, DIMENSIONAL, AND OTHER REQUIREMENTS SEE EWCAP 001.
9. TO CLAIM USCAR COMPLIANCE, PARTS DESIGNED AND PRODUCED TO THIS FOOTPRINT DRAWING MUST BE TESTED TO AND MEET THE REQUIREMENTS OF SAE/USCAR 2.
10. REVERSE DRAFT PERMISSIBLE IN LATCH DETAILS.
11. SYMBOL DENOTES RECOMMENDED DIMENSIONS THAT MAY BE USED TO MONITOR PART QUALITY.
12. 2.8MM WIDE BLADES MAY BE PRESENT ON OLDER HEADERS.

280-S-002-1-A02	A	BLACK
280-S-002-1-B02	B	LT. GRAY
280-S-002-1-C02	C	DARK GRAY
280-S-002-1-D02	D	BLACK
EWCAP P/N	OPTION	COLOR

113	D3	ADDED CENTER SLOT & TYP. EXCEPT AS NOTED	11-20-15	JK	MS
113	D2	CORRECTED DIMENSION LINE LOCATION	11-20-15	JK	MS
113	D1	WAS 0.25	11-20-15	JK	MS
107	C7	Was Profile 0.1	6-22-15	JK	MS
107	C6	Profile Of Line Was Incorrect Line	6-22-15	JK	MS
107	C5	Added True Position 0.3 to Datum B	6-22-15	JK	MS
107	C4	Was 5.5 +/- 0.1 With True Position	6-22-15	JK	MS
107	C3	Dimensions Were Not Shown as Basic	6-22-15	JK	MS
107	C2	Removed View	6-22-15	JK	MS
107	C1	Updated GD&T Key Options A Through D	6-22-15	JK	MS
103	B	Adjusted Datum Structure for Clarity	8-09-14	JS	KI
102	A	Initial release	7-16-14	JS	MS
	A1	Profile line tolerance was 0.05			
	A2	Added true position			
	A3	Change to basic dimension and remove tolerance in 4 places			
	A4	Remove feature control from 2 places			
	EU	Release for engineering use only do not tool	05-10-14	CHC	MS
CHANGE SERIAL NUMBER	LET	REVISION RECORD	DATE	DWN	CHK

TOLERANCES (UNLESS OTHERWISE SPECIFIED)		THIRD ANGLE PROJECTION
DIMENSIONS ARE IN MILLIMETERS		
ANGLES ± 0° 30'		

EWCAP			
SCALE 5:1	DRAWN BY C.H.CHAN	CHECKED BY K.INOUE	DATE 04-10-14
TITLE 2.8mm 2WAY SINGLE ROW SEALED DEVICE CONNECTOR			
SHEET 1 OF 2	DRAWING NUMBER 280-S-002-1-Z02	SIZE C	DO NOT SCALE DRAWING COMPUTER AIDED DRAWING
			REVISION LEVEL D

SUMITOMO ELECTRIC  
WIRING SYSTEMS

CCH.UFB912.0515.2014

