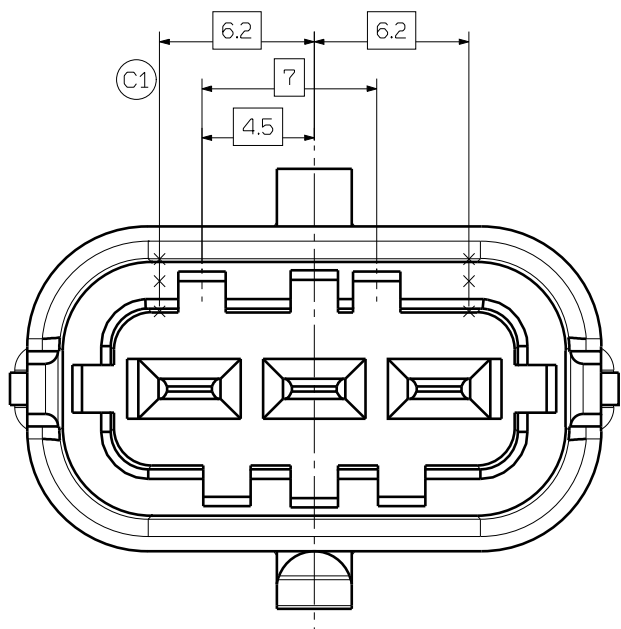
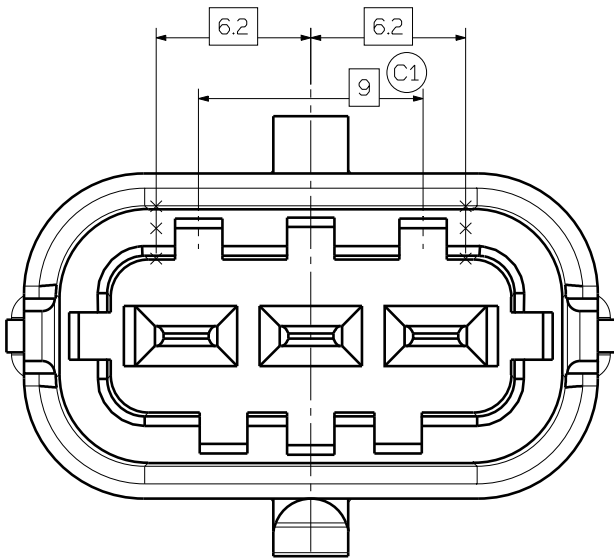


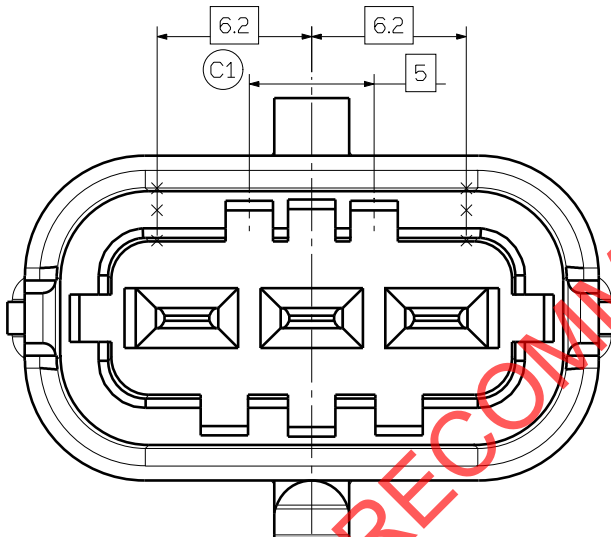
KEYING OPTION C  
SCALE 5:1



KEYING OPTION D  
SCALE 5:1



KEYING OPTION A  
SCALE 5:1



KEYING OPTION B  
SCALE 5:1

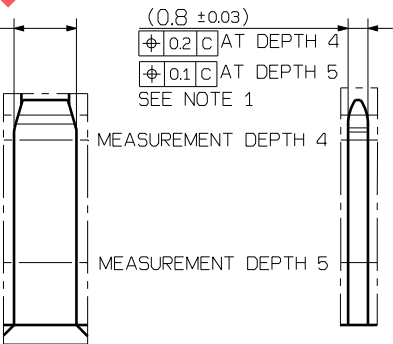
NOTES: UNLESS OTHERWISE SPECIFIED

1. DIMENSIONING AND TOLERANCING PER ASME Y14.5M.  
2. 0.25 MAX RADII ON ALL CORNERS SHOWN SHARP.  
3. ALL UNSPECIFIED RADII 0.25 MAX.  
4. STANDARD COLORS FOR POLARIZATION (SEE CHART IN LEFT LOWER CORNER OF DRAWING SHEET).  
5. REFER TO "SAE/USCAR 12 CONNECTOR DESIGN CRITERIA" FOR ADDITIONAL REQUIREMENTS.  
6. EXCEPT WHERE NOTED, DRAFT ON OUTSIDE SURFACES IS PERMISSIBLE WITHIN TOLERANCE.  
7. SYMBOL INDICATES DRAFT DIRECTION.  
8. FOR TERMINAL MATERIAL, DIMENSIONAL, AND OTHER REQUIREMENTS SEE EWCAP 001.  
9. TO CLAIM USCAR COMPLIANCE, PARTS DESIGNED AND PRODUCED TO THIS FOOTPRINT DRAWING MUST BE TESTED TO, AND MEET, THE REQUIREMENTS OF SAE/USCAR 2.  
10. REVERSE DRAFT PERMISSIBLE IN LATCH DETAILS.  
11. SYMBOL DENOTES RECOMMENDED DIMENSIONS THAT MAY BE USED TO MONITOR PART QUALITY.  
12. 2.8MM WIDE BLADES MAY BE PRESENT ON OLDER HEADERS.

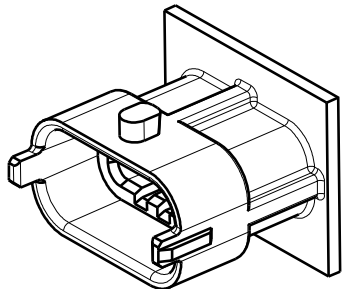
208-S-003-1-A02	A	BLACK
208-S-003-1-B02	B	LIGHT GRAY
208-S-003-1-C02	C	DARK GRAY
208-S-003-1-D02	D	BLACK
EWCAP P/N	OPTION	COLOR

C2

(2.5 ±0.1)  
SEE NOTE 12  
Ø 0.2 [C] AT DEPTH 4  
Ø 0.1 [B] AT DEPTH 5  
SEE NOTE 1



2.8mm BLADE  
SCALE 5:1



SCALE 2:1

NOTICE

THIS DRAWING, OR PORTIONS OF IT, ARE CONTROLLED BY THE ELECTRICAL WIRING COMPONENTS APPLICATION PARTNERSHIP (EWCAP).

A SUBGROUP OF THE UNITED STATES COUNCIL FOR AUTOMOTIVE RESEARCH LLC (USCAR LLC).

USCAR IS A LLC CONSISTING OF MEMBERS FROM FCA USA LLC, FORD MOTOR COMPANY, AND GM CORPORATION.

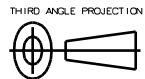
ANY CHANGE TO AN EWCAP CONTROLLED PORTION OF THIS DRAWING, INCLUDING A REVISION RECORD, MUST BE APPROVED IN WRITING BY THE RESPONSIBLE EWCAP REPRESENTATIVE FROM EACH USCAR MEMBER COMPANY.

EACH EWCAP REPRESENTATIVE AUTHORIZED TO SIGN FOR HIS OR HER MEMBER COMPANY IS RESPONSIBLE FOR OBTAINING ALL NECESSARY APPROVALS WITHIN THAT COMPANY, PRIOR TO SIGNING FOR THE APPROVAL OF THE CHANGE.

EWCAP EXPRESSLY PROHIBITS ANY PARTY FROM CHANGING EITHER ANY EWCAP CONTROLLED PORTION OF THIS DRAWING OR ANY ASSOCIATED TOOLING BEFORE RECEIVING APPROVAL, SIGNED BY THE AUTHORIZED REPRESENTATIVES, OF THE USCAR MEMBER COMPANIES. REFERENCE TO THE SIGNED CHANGE NOTICE MUST BE ENTERED IN THE DRAWING CONTROL COLUMN.

131	E	Drawing number changed was 280-S-003-A-Z02	09-15-16	ET	WL
113	D3	Added Middle Slots	12-21-15	DI	NT
113	D2	Corrected Dimension Line Location .	12-21-15	DI	NT
113	D1	was 0.25.	12-21-15	DI	NT
107	C7	was Profile 0.1.	06-22-15	JK	MS
107	C6	Profile of Line was Incorrect Line.	06-22-15	JK	MS
107	C5	Added True Position 0.3 to Datum B.	06-22-15	JK	MS
107	C4	was 10 ±0.1 with True Position	06-22-15	JK	MS
107	C3	Dimensions were Not Shown as Basic.	06-22-15	JK	MS
107	C2	Removed View.	06-22-15	JK	MS
107	C1	Updated GD&T Key Options A Through D.	06-22-15	JK	MS
103	B	Adjusted Datum Structure for Clarity.	08-09-14	JS	KI
102	A	Initial Release.	07-29-14	JS	KI
CHANGE SERIAL NUMBER	LET	REVISION RECORD	DATE	DWN	CHK

TOLERANCES (UNLESS OTHERWISE SPECIFIED)  
DIMENSIONS ARE IN MILLIMETERS  
ANGLES ± 0° 30'



EWCAP

SCALE 5:1	DRAWN BY C.H. CHAN	CHECKED BY K. INOUE	DATE 04-10-14
TITLE 2.8mm 3WAY SINGLE ROW SEALED DEVICE CONNECTOR			
SHEET 1 of 2	DRAWING NUMBER 280-S-003-1-Z02	SIZE C	DO NOT SCALE DRAWING COMPUTER AIDED DRAWING
		REVISION LEVEL E	

SUMITOMO ELECTRIC  
WIRING SYSTEMS  
CCH.UFB913.12.21.2014

DWG SIZE A2/C

