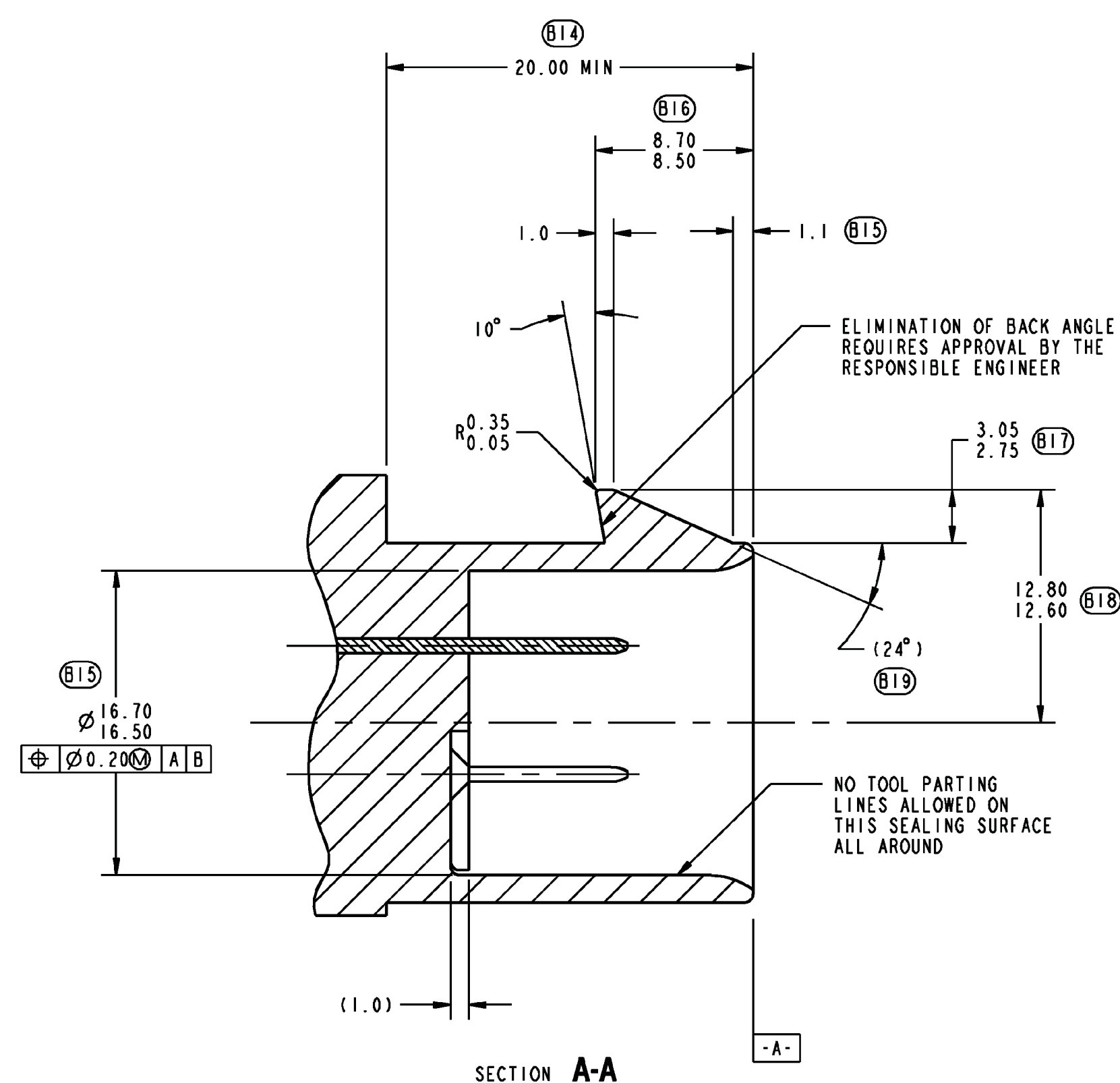
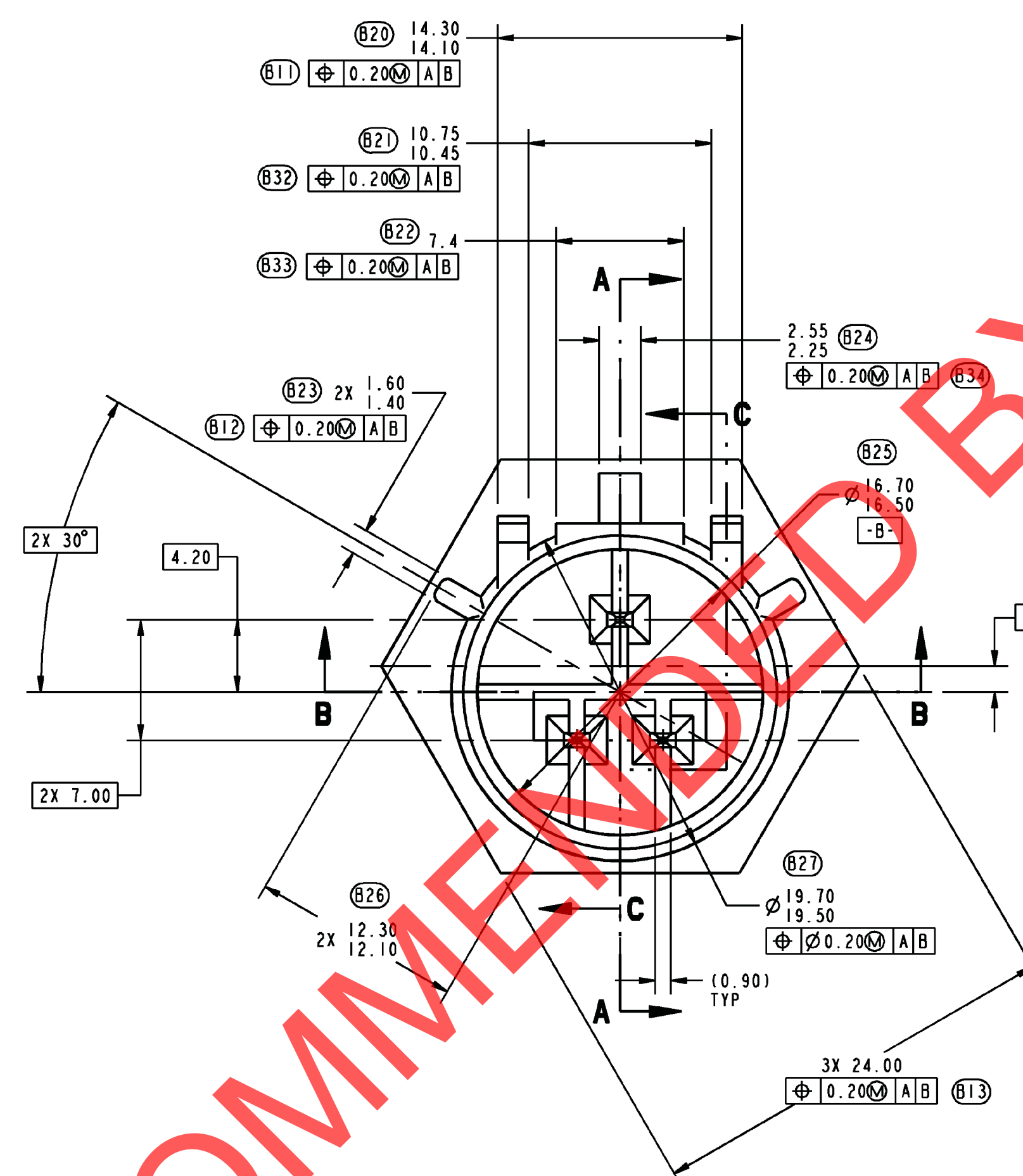


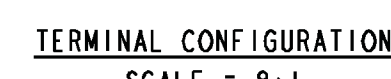
FULL SIZE VIEWS



SECTION A-A



## SECTION



## SECTION B-I

(C2) (B35) NOTES:

1. ALL DIMENSIONS SHOWN IN MILLIMETERS.
2. RADI ON ALL CORNERS SHOWN SHARP OR ALL UNSPECIFIED RADI: 0.25 MAX. EXCEPT AS NOTED.

(3) STANDARD COLORS FOR POLARIZATIONS - DEVIATION REQUIRES APPROVAL OF AUTHORIZED PERSON.



**MALE TERMINAL AND ELECTRICAL REQUIREMENTS**  
(EXCEPTIONS MUST BE APPROVED BY THE RESPONSIBLE ENGINEER)

**BASE MATERIAL** - COPPER ALLOY

**ELECTRICAL CONDUCTIVITY** -  $\geq 28\%$  IACS AT  $20^{\circ}\text{C}$  (AS ANNEALED).

USE OF MATERIALS WITH CONDUCTIVITY  $< 28\%$  IACS OR NON-COPPER ALLOYS ARE ACCEPTABLE WHEN APPROVED BY THE RESPONSIBLE ENGINEER.

**CONTACT AREA PLATING -**  
**TIN -** FOR UP TO 125°C MAX. CONTINUOUS TEMPERATURE  
**BARrier PLATE -** (OPTIONAL FOR SOLDERABILITY) UNDERPLATE WITH COPPER 0.0025MM (100 MICRO-INCHES) MIN. THICKNESS  
**TOP LAYER -** 0.0050±0.0025MM (200 MICRO-INCHES) TIN

PRECIOUS METAL - (WHEN SPECIFIED)  
 BARRIER LAYER - (OPTIONAL FOR SOLDERABILITY) UNDERPLATE WITH COPPER 0.0025MM (100 MICRO-INCHES) MIN. THICKNESS  
 INTERMEDIATE LAYER #1 - NICKEL - 0.0012MM (50 MICRO-INCHES) MIN. NICKEL ELECTROPLATE  
 INTERMEDIATE LAYER #2 - (OPTIONAL) - 0.001MM (40 MICRO-INCHES) MIN. PALLADIUM ELECTROPLATE  
 TOP PLATING - 0.001MM (40 MICRO-INCHES) MIN. HARD-GOLD ELECTROPLATE IF INTERMEDIATE LAYER #2 IS APPLIED.  
 0.0005MM (20 MICRO-INCHES) MIN. HARD-GOLD ELECTROPLATE IF INTERMEDIATE LAYER #2 IS NOT APPLIED.

PROCESS LUBRICANT:  
ANY PROCESS LUBRICANT REMAINING ON THE TERMINAL MUST NOT VARNISH OR DEGRADE ITS ELECTRICAL PERFORMANCE UP TO A MAXIMUM CLASS AMBIENT TEMPERATURE PER SAE/USCAR-2 FOR 1008 HOURS. PROCESS LUBRICANTS SHOULD BE APPROVED BY THE RESPONSIBLE ENGINEER.

C3


3

NOTICE

THIS DRAWING, OR PORTIONS OF IT, ARE CONTROLLED BY THE ELECTRICAL WIRING COMPONENTS APPLICATION PARTNERSHIP (EWCAP), A SUBORGAN OF THE UNITED STATES CONSORTIUM FOR AUTOMOTIVE RESEARCH (USCAR). USCAR IS A JOINT VENTURE OF THE FOLLOWING COMPANIES: CHRYSLER CORPORATION, FORD MOTOR COMPANY, AND GENERAL MOTORS CORPORATION. ANY CHANGE TO A EWCAP CONTROLLED PORTION OF THIS DRAWING, INCLUDING A "RECORD CHANGE," MUST BE APPROVED IN WRITING BY THE RESPONSIBLE EWCAP MEMBER FROM THE COMPANY THAT ORIGINALLY DEVELOPED THE PORTION OF THE DRAWING TO WHICH THE CHANGE IS BEING APPLIED. THE COMPANY THAT ORIGINALLY DEVELOPED THE PORTION OF THE DRAWING TO WHICH THE CHANGE IS BEING APPLIED IS RESPONSIBLE FOR OBTAINING ALL NECESSARY APPROVALS WITHIN THAT COMPANY PRIOR TO SIGNING FOR APPROVAL OF THE CHANGE. EWCAP EXPRESSLY PROHIBITS ANY ENTITY FROM CHANGING ANY PORTION OF THIS DRAWING WITHOUT THE APPROVAL OF ANY ASSOCIATED TOOLING BEFORE RECEIVING AN APPROVAL SIGNED BY AN AUTHORIZED REPRESENTATIVE FROM EACH COMPANY PARTICIPATING. REFERENCE TO THE SIGNED APPROVAL OF YOUR FIRM MUST BE ENTERED IN THIS DRAWING'S CONTROL COLUMN.

[illegible]

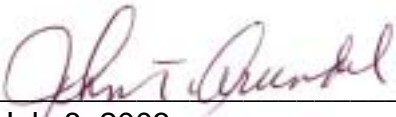
C3	UPDATED TAP TO ADD COLORS			
C2	UPDATED NOTES	000302	SAF	DEO
C1	7.15/6.55 WAS 1.516.85			
B35	REMOVED GENERAL TOLERANCES			
B34	MODIFIED FEATURE CONTROL FRAME			
B33	MODIFIED FEATURE CONTROL FRAME			
B32	MODIFIED FEATURE CONTROL FRAME			
B31	9.30/8.75 WAS 9.80			
B29	1.25/0.95 WAS 1.10			
B28	6.55/6.25 WAS 6.40			
B27	7.15/6.85 WAS 7.00			
B26	19.70/19.50 WAS 19.60			
B25	12.30/12.10 WAS 12.20			
B24	16.70/16.50 WAS 16.60			
B23	2.55/2.25 WAS 2.40			
B22	1.60/1.40 WAS 1.50			
B21	7.4 WAS 7.40			
B20	10.75/10.45 WAS 10.60			
B19	14.30/14.10 WAS 14.20			
B18	3.25/3.15 WAS 3.20			
B17	12.80/12.60 WAS 12.70			
B16	13.05/12.75 WAS 12.90			
B15	8.70/8.50 WAS 8.60	991108	SAF	DEO
B14	ADDED DIMENSION (2) PLACES			
B13	20.00 WAS 18.50			
B12	MODIFIED FEATURE CONTROL FRAME			
B11	MODIFIED FEATURE CONTROL FRAME			
B10	ADDED FEATURE CONTROL FRAME			
B9	REMOVED DATUM			
B8	2X (R1.7) WAS 2X (R2.30/1.70)			
B7	ADDED POSITIONAL TOLERANCE AT BASE			
B6	8X (0.10) WAS 8X (0.05/0.75)			
B5	0.10 WAS 0.20 POSITIONAL TOLERANCE			
B4	0.40/0.20 WAS 0.40 MAX			
B3	ADDED POSITIONAL TOLERANCE AT BASE			
B2	0.10 WAS 0.20 POSITIONAL TOLERANCE			
B1	ADDED NOTE			
A	12.45/12.15 WAS 12.30			
A	REMOVED 7.0 MIN			
-	INITIAL RELEASE	990723	SAF	DEO
CHANGE SERIAL NUMBER	REVISION RECORD	DATE	DWN	CHN

TOLERANCES (UNLESS OTHERWISE SPECIFIED)				THIS IS A BELL PRODUCTION	
DIMENSIONS ARE IN MILLIMETERS					
ANGLES $\pm 0^{\circ} 30'$					
X.X $\pm 0.25$		X.XX $\pm 0.13$			
<h1 style="text-align: center;">EWCAP</h1>					
SCALE	1:1	DRAWN BY	S FINSTROM	CHECKED BY	D OSTERHOUSE
				DATE 98-07-2	
TITLE					
DIRECT CONNECT INTERFACE - 3 WAY 1.5MM SEALED MALE					
SHEET	DRAWING NUMBER	SIZE	DO NOT SCALE DRAWING	REVISION LETTER	
1 of 1	150-S-003-2-704	E	C	C	

120-2-003-5-504  
NUMBER

## NOTICE

EWCAP has selected common dimensions for the connector depicted and described herein (listed below). Further, EWCAP has selected for publication this drawing prepared by Engineered Plastic Components as representative of a connector having these dimensions. In exchange for the consideration of the selection of this drawing for publication (including posting on EWCAP's web site) and other good and valuable consideration flowing from this selection, Engineered Plastic Components hereby agrees on behalf of itself and its successors and assigns, with respect to any copyrights it may have in this drawing as well as any patent rights it may have in the connector illustrated in this drawing, not to enforce such copyrights and patents against any person or entity on account of their activities to make, have made, use and sell the connector illustrated in this drawing for vehicular applications. The term "connector" as used in this paragraph is limited solely to the structure specifically illustrated in this drawing.

Signed  for Engineered Plastic Components.

Date: July 8, 2003

Name and title of signer: John Arundel Sales Manager

NO WARRANTIES OR INDEMNITIES OF ANY KIND ARE MADE OR IMPLIED BY Engineered Plastic Components OR EWCAP. IN PARTICULAR THERE ARE NO EXPRESS OR IMPLIED WARRANTIES OF FITNESS FOR A PARTICULAR PURPOSE, MERCHANTABILITY, NON-INFRINGEMENT OR ANY OTHER WARRANTY OF ANY KIND. IN ADDITION, THERE ARE NO EXPRESS OR IMPLIED WARRANTIES OR INDEMNITIES OF ANY KIND RELATING TO THIRD PARTY CLAIMS ARISING UNDER THE INTELLECTUAL PROPERTY LAWS OF ANY COUNTRY. ANYONE USING THE INFORMATION IN THIS DRAWING DOES SO AT THEIR OWN RISK.

150-S-003-2-Z04