

Application Instructions for USCAR/EWCAP-005 CONNECTOR CLIP SLOT

1. The USCAR "EWCAP-005" drawing defines four clip slots that can be added to a connector to allow retainer clips to be attached to it. Clip slots are not required for a connector to be USCAR compliant. Inclusion of a clip slot is determined by the customer's needs. If one of the EWCAP clip slots is requested, callout the applicable design from the EWCAP-005 clip slot design choices. Item 5 lists what EWCAP recommends for a clip slot based on connector design.
2. To be EWCAP compliant, the clip slot must be tooled exactly as specified in EWCAP-005. If a variant design is used, the deviations from the EWCAP design must be noted on the connector drawing and any product specification literature that references the connector's USCAR compliance.
3. Clips and retainers intended to be mated to a EWCAP-005 clip slot design need to be tested per USCAR-44 Sec 5.12, test path N.
4. Solid model STEP files are available and are recommended to be imported directly into the model. Import of the model eliminates translation errors and saves time for connector designers. The ISO standard "STEP" file format is provided.
5. EWCAP recommends clip slots be selected based on the following application guidelines
 - a. The 11mm Clip Slot (EWCAP-005-11) is first choice. Select the 11mm Clip Slot for connectors up to 55mm (in face-view Diagonal Dimension).
 - b. Use the 17mm Clip Slot (EWCAP-005-17) for connectors with greater than 55mm face-view diagonal dimension (or as needed for strength by Engineering Analysis)
 - c. Use the 23mm Clip Slot (EWCAP-005-23) when requested by customer.
 - d. Use the 7mm Clip Slot (EWCAP-005-7) only when the connector design will not fit the 11mm Clip Slot (EWCAP-005-11).
6. Part shall not rattle after clip is installed.

EWCAP would like to thank HellermannTyton and Delphi for technical and development support on this important standard.

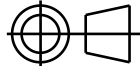
This drawing, or portions of it are controlled by the Electrical Wiring Components Application Partnership (EWCAP) a subgroup of the United States Council for Automotive Research LLC (USCAR LLC).

USCAR is an LLC consisting of members from Stellantis, Ford Motor Company and GM Company.

Any change to a EWCAP controlled portion of this drawing, including a revision record change must be approved, in writing, by the responsible EWCAP representative from each USCAR member company. Each EWCAP representative authorized to sign for his or her member company is responsible for obtaining all necessary approvals within that company prior to signing for the approval of the change.

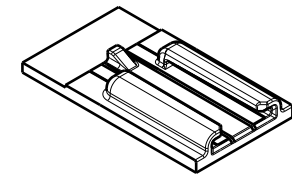
EWCAP expressly prohibits any party from changing either any EWCAP controlled portion of this drawing or any associated tooling before receiving approval, signed by the authorized representatives, of the USCAR member companies. Reference to the signed change notice must be entered in the drawing control column.

177	G	ADDED "BACK" TO WALL THICKNESS DIMENSION	1/15/24	EJF	SJA
174	F	F1 UPDATED CUSTOMER LIST F2 ADDED USCAR-44 REFERENCE F3 REMOVED MINIMUM PAD F4 ADDED TOLERANCES F5 ADDED OVERALL MIN REF DIMENSIONS F6 REVISED MIN CLEARANCE NOTE	10/13/22	EJF	SJA
161	E	E1 ADDED OVERALL HEIGHT E2 UPDATED NOTE 5b, 5c E3 UPDATED NOTE 1 E4 REMOVED HYPERLINK	3/18/20	GJD	EJF
153	D	D1 CHANGED PARTING LINE D2 ENLARGED RADIUS D3 WAS 4.2/4.3 D4 WAS 28.7°	11/20/18	SJA	TAT
120	C	C1 ADDED SHEET 3 of 5 C2 UPDATED NOTE 5	3/23/16	EJF	EJH
	B	ADDED NOTE 6	9/6/11	EJH	SJA
	A	INITIAL RELEASE	9/6/11	SJA	WPT
CHANGE SERIAL NUMBER	LET	REVISION RECORD	DATE	DWN	CHK

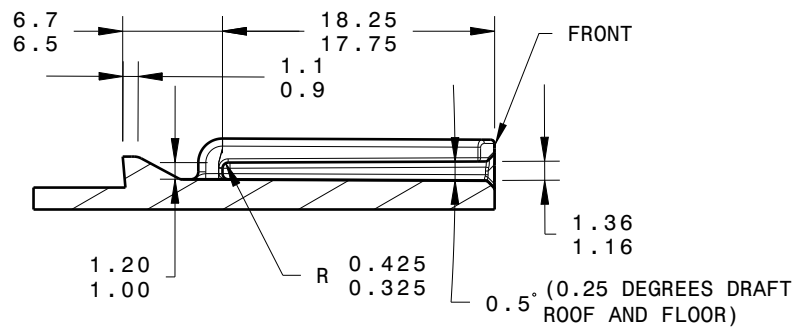
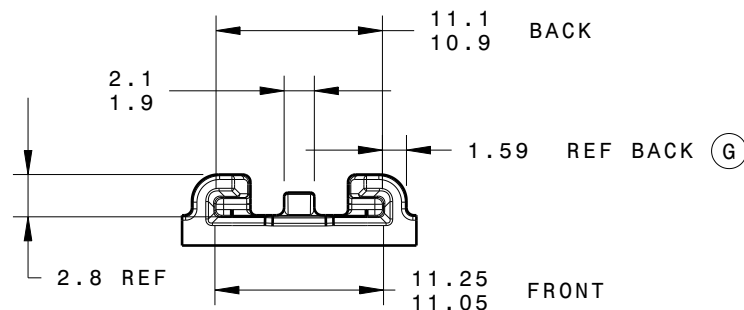
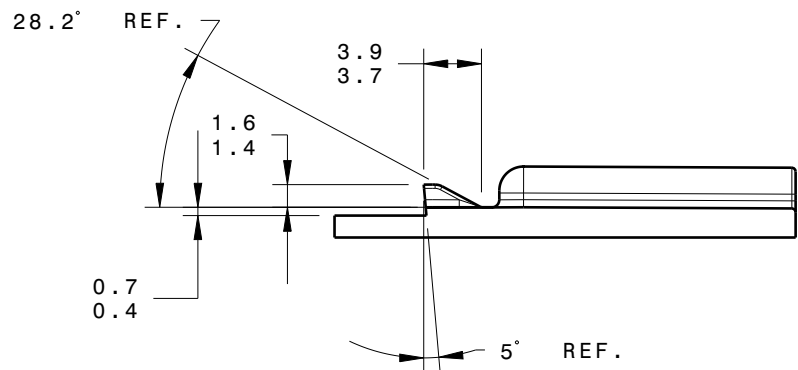
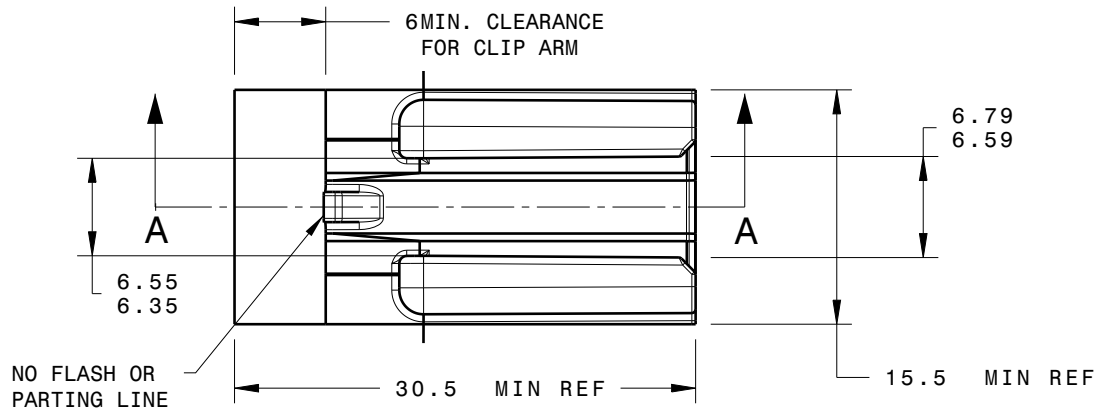
TOLERANCES UNLESS OTHERWISE SPECIFIED		THIRD ANGLE PROJECTION	
DIMENSIONS ARE IN MILLIMETERS			
<h1>EWCAP</h1>			
SCALE	DRAWN BY	CHECKED BY	DATE
1:1	SCOTT ADAMS	PATRICK TRAUTFIELD	7/27/11
TITLE CLIP SLOT DRAWINGS			
SHEET	DRAWING NUMBER	DO NOT SCALE DRAWING	REVISION LEVEL
1 OF 5	EWCAP - 005	A COMPUTER AIDED DRAWING	G



11mm Clip Slot (EWCAP-005-11)



Isometric view
Scale: 1:1

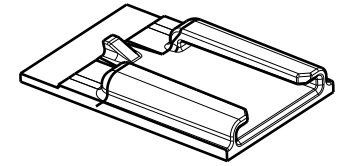
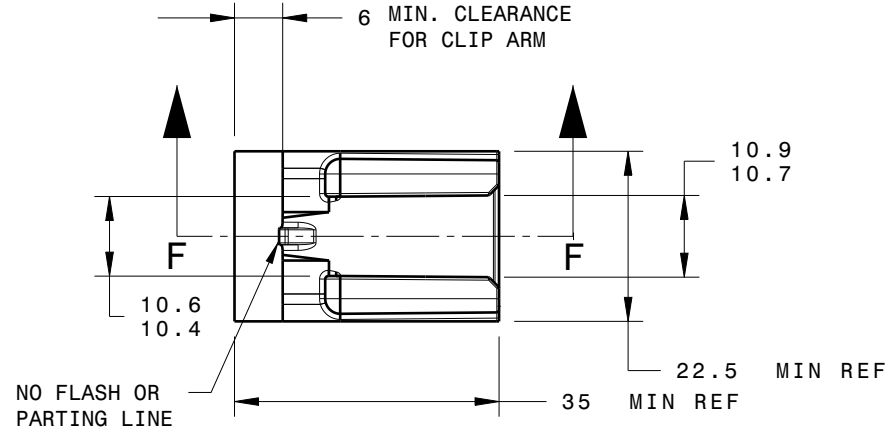


Section view A-A

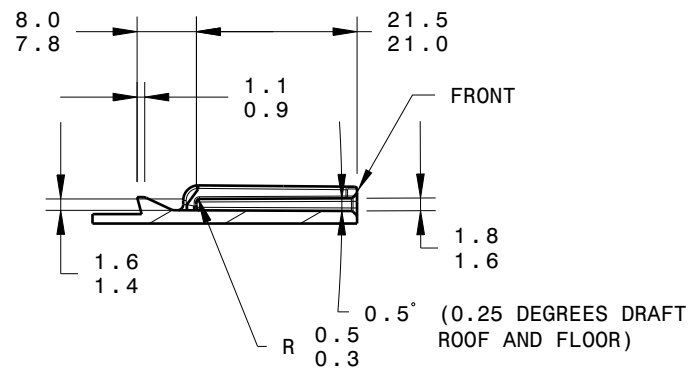
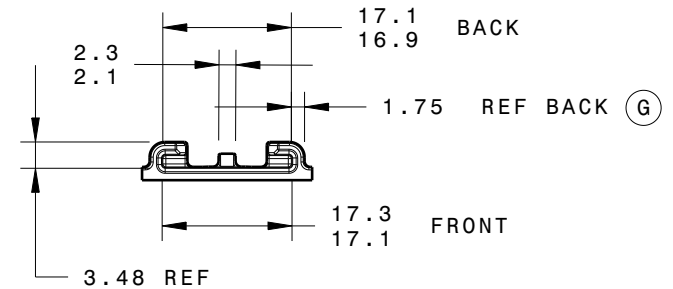
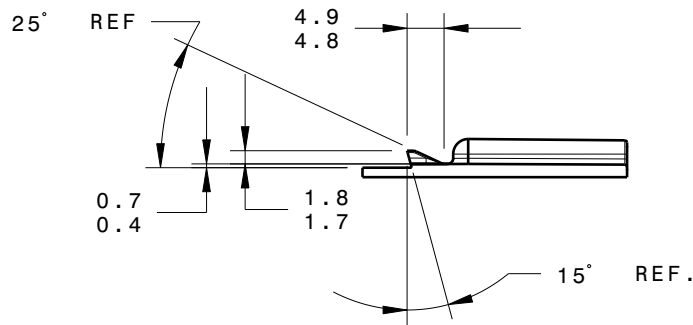
HellermannTyton®

TOLERANCES UNLESS OTHERWISE SPECIFIED		THIRD ANGLE PROJECTION	
DIMENSIONS ARE IN MILLIMETERS			
<h1>EWCAP</h1>			
SCALE 2:1	DRAWN BY SCOTT ADAMS	CHECKED BY PATRICK TRAUTFIELD	DATE 7/27/11
TITLE CLIP SLOT DRAWINGS			
SHEET 2 OF 5	DRAWING NUMBER EWCAP - 005	DO NOT SCALE DRAWING COMPUTER AIDED DRAWING	REVISION LEVEL A G

17mm Clip Slot (EWCAP-005-17)



ISOMETRIC VIEW

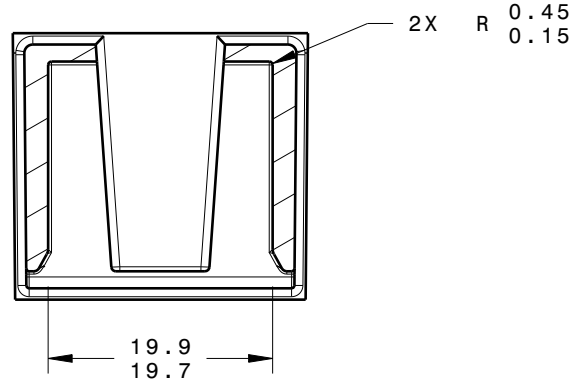


SECTION VIEW F-F

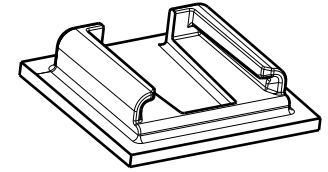
HellermannTyton®

TOLERANCES UNLESS OTHERWISE SPECIFIED		THIRD ANGLE PROJECTION	
DIMENSIONS ARE IN MILLIMETERS			
<h1>EWCAP</h1>			
SCALE	DRAWN BY	CHECKED BY	DATE
1:1	ETHAN FISH	SCOTT ADAMS	3/23/16
TITLE			
CLIP SLOT DRAWINGS			
SHEET	DRAWING NUMBER	DO NOT SCALE DRAWING	REVISION LEVEL
3 OF 5	EWCAP - 005	A	G
		COMPUTER AIDED DRAWING	

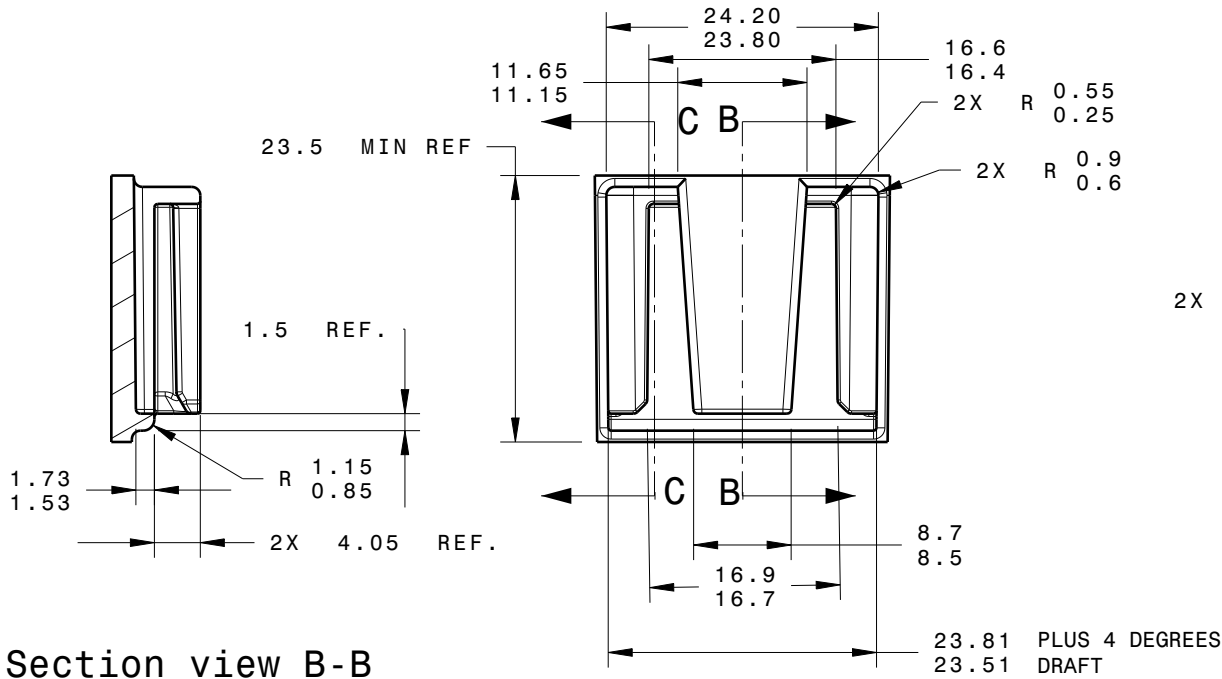
23mm Clip Slot (EWCAP-005-23)



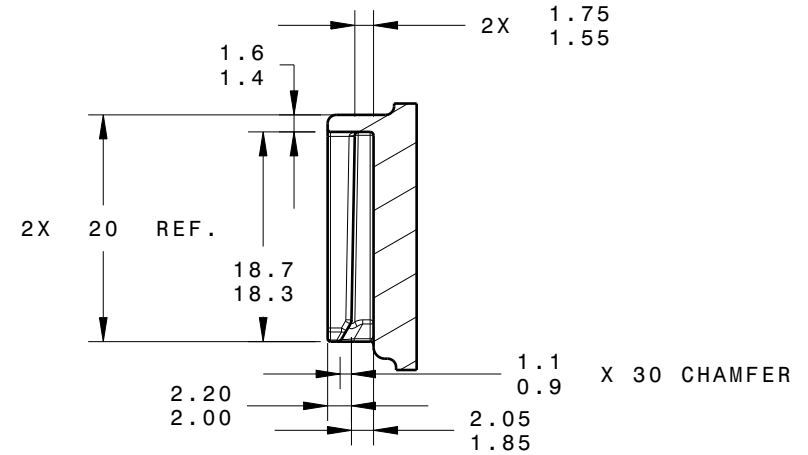
Section view A-A



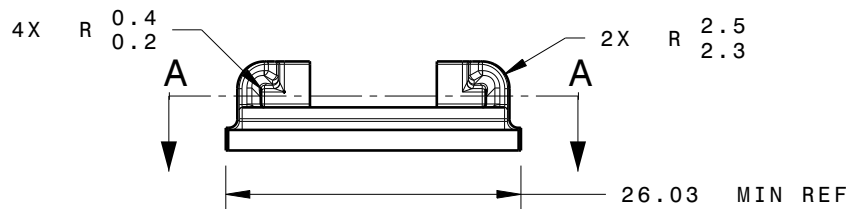
Isometric view
Scale: 1:1



Section view B-B



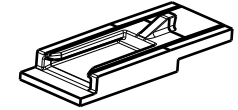
Section view C-C



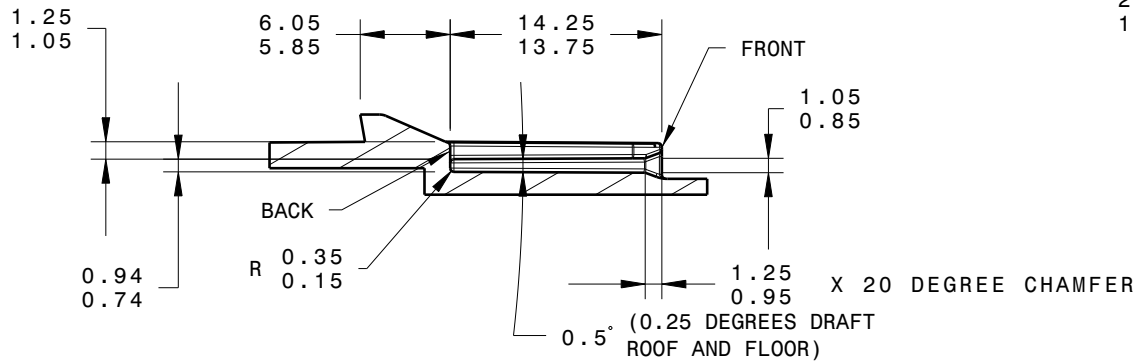
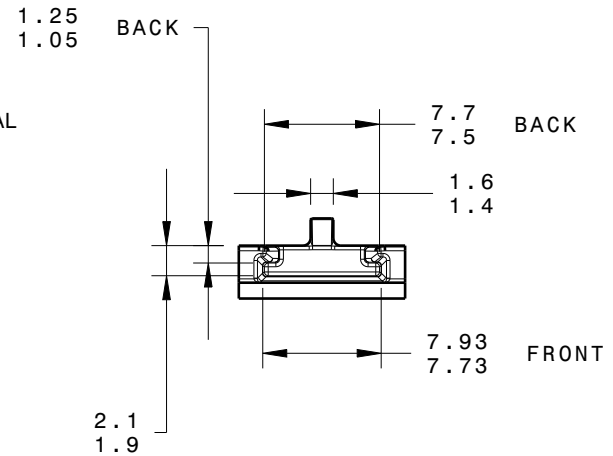
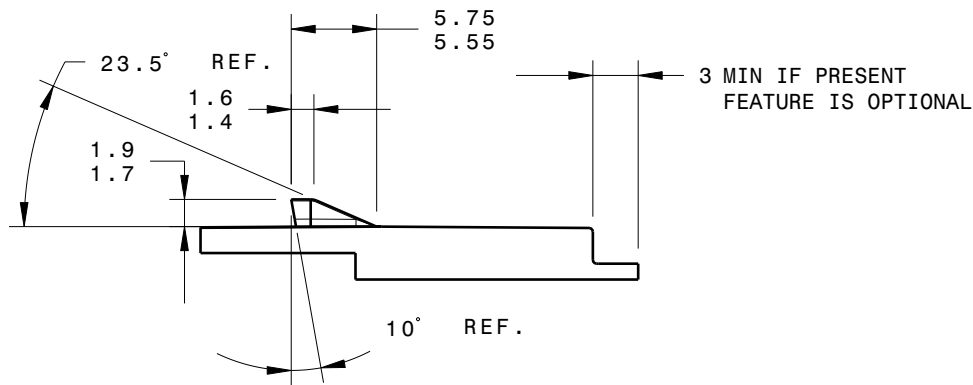
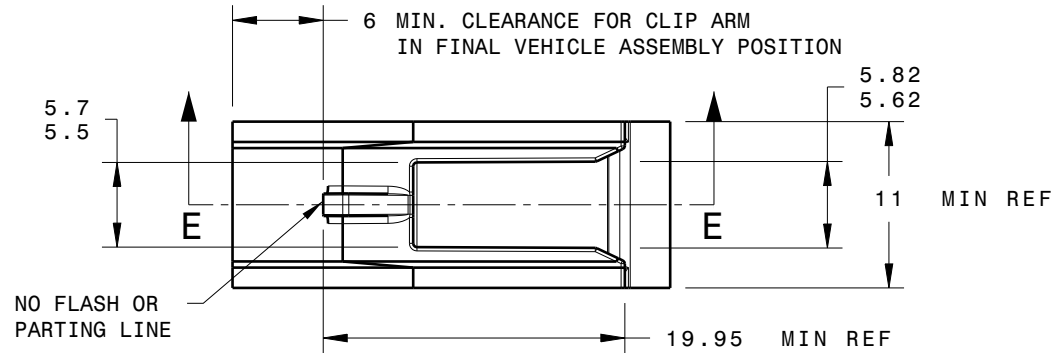
HellermannTyton®

TOLERANCES UNLESS OTHERWISE SPECIFIED		THIRD ANGLE PROJECTION	
DIMENSIONS ARE IN MILLIMETERS			
<h1>EWCAP</h1>			
SCALE 3:2	DRAWN BY SCOTT ADAMS	CHECKED BY PATRICK TRAUTFIELD	DATE 7/27/11
TITLE CLIP SLOT DRAWINGS			
SHEET 4 of 5	DRAWING NUMBER EWCAP - 005	DO NOT SCALE DRAWING COMPUTER AIDED DRAWING	REVISION LEVEL A G

7mm Clip Slot (EWCAP-005-7)



Isometric view
Scale: 1:1



Section view E-E

HellermannTyton®

TOLERANCES UNLESS OTHERWISE SPECIFIED		THIRD ANGLE PROJECTION	
DIMENSIONS ARE IN MILLIMETERS			
<h1>EWCAP</h1>			
SCALE	DRAWN BY	CHECKED BY	DATE
2:1	SCOTT ADAMS	PATRICK TRAUTFIELD	7/27/11
TITLE			
CLIP SLOT DRAWINGS			
SHEET	DRAWING NUMBER	DO NOT SCALE DRAWING	REVISION LEVEL
5 OF 5	EWCAP - 005	A COMPUTER AIDED DRAWING	G