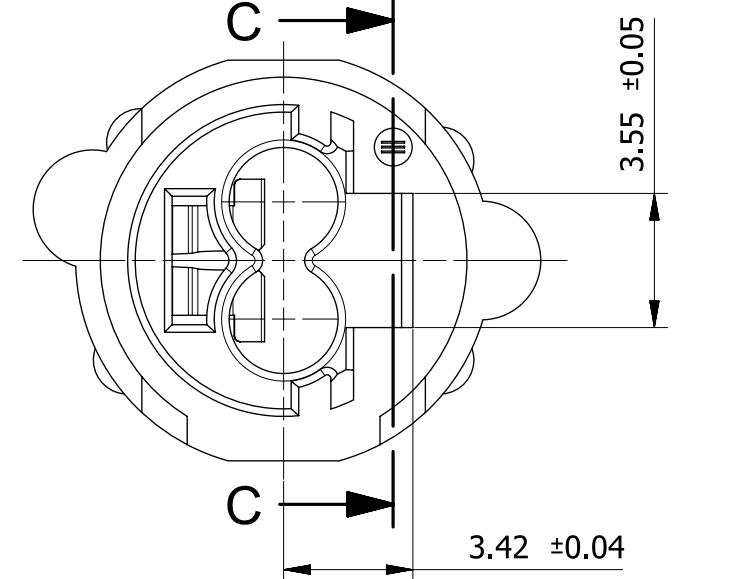
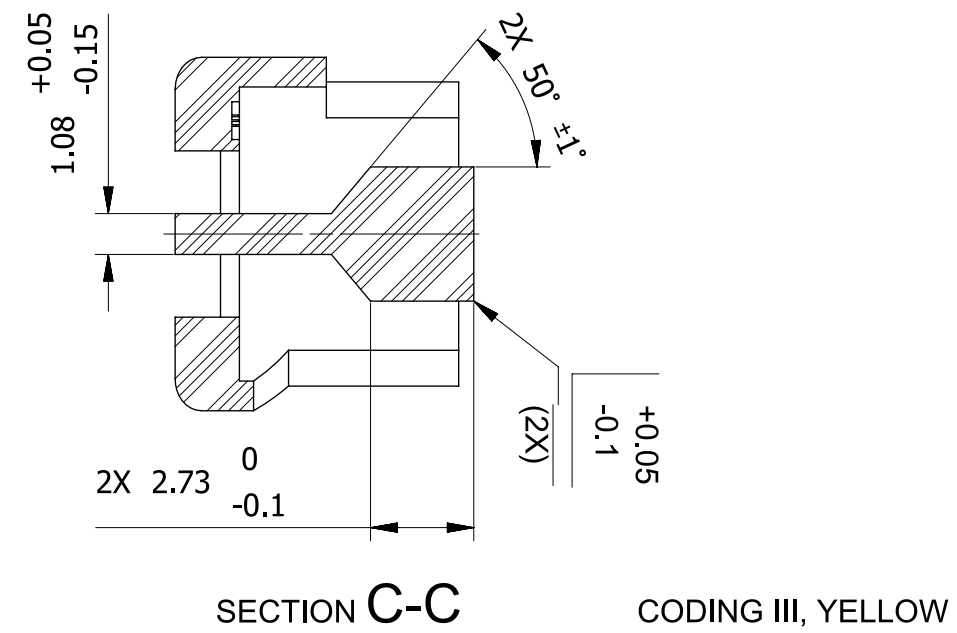
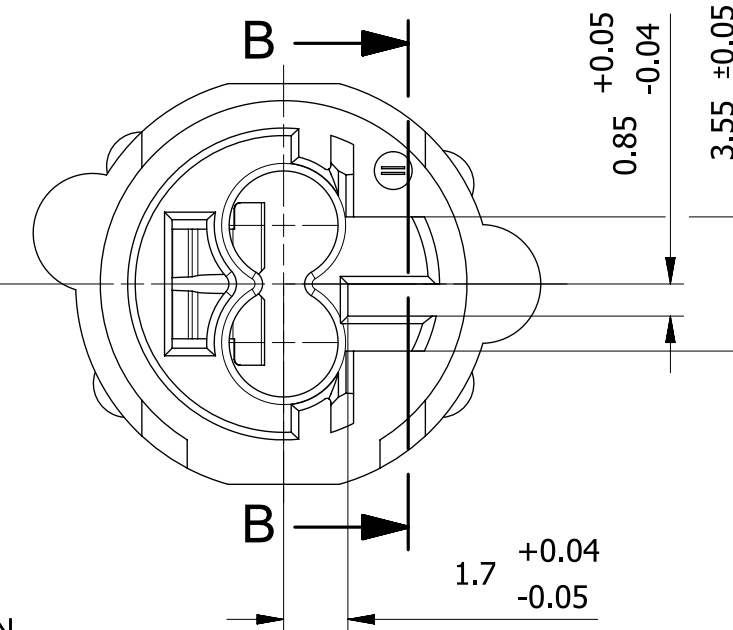
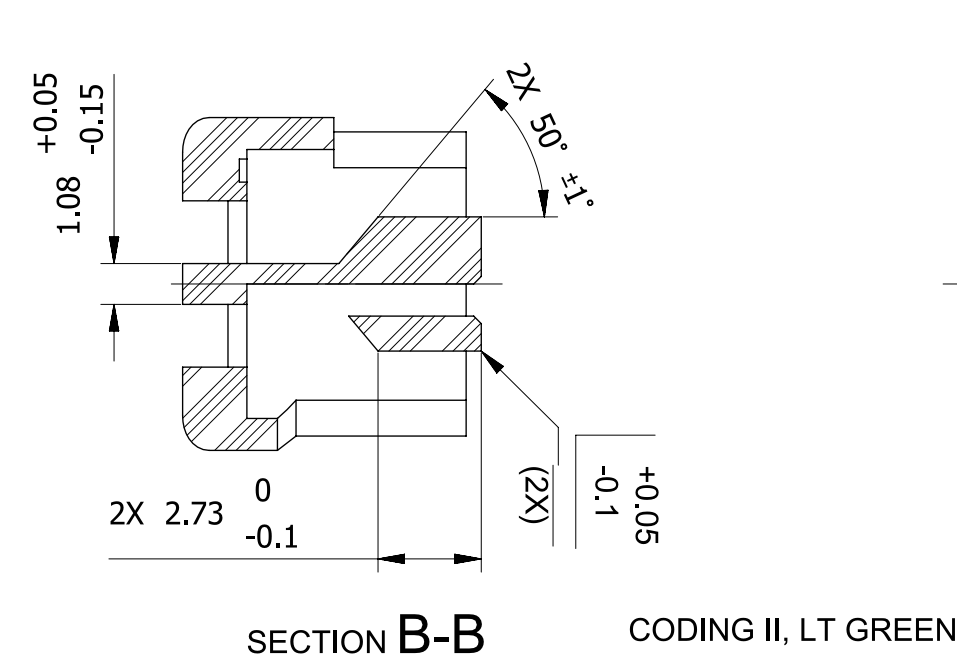
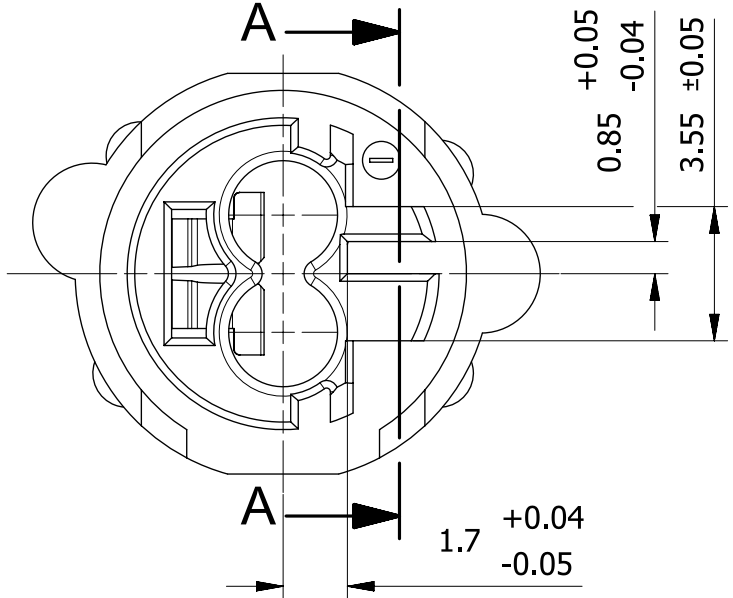
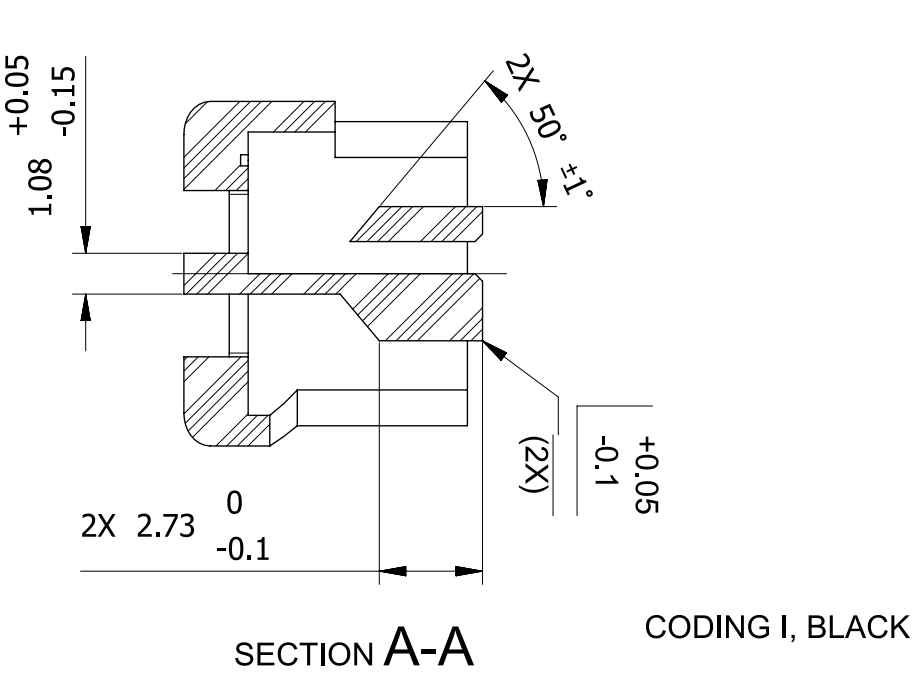


VIEW CODING VARIANTS, WITHOUT IGNITOR AND PIN'S



FORCES:
MAX. PERMITTED MATING FORCE 80 N
RETENTION FORCE WITH POSITION ASSURANCE (CPA) > 135 N
EACH MEASURED AT CONNECTOR IN AXIAL DIRECTION
CONTACT FORCE OF SHORTING CLIP > 0.4N
RETENTION FORCE OF RETAINER IN IGNITOR MIN. 20N

PIN ASSIGNEMENT UNSPECIFIC

MIN. 20 OPERATION CYCLES

MINIMUM GUARENTED CONTACT 1,0 mm

DIMENSIONS AND TOLERANCES:
TOLERANCES FOR LINEAR AND ANGULAR DIMENSIONS AS WELL AS
GEOMETRICAL TOLERANCES FOR FEATURES
ACC. TO DIN ISO 2768-mH AND ISO 8015
EDGE OF WORKPIECES SEE DIN ISO 13715

PLATING AT CONTACT AREA OF PINS (COMPONENT AIRBAG MODUL):
0.8 +0.6µm Au OVER MIN 2.0 +4.0µm Ni
NON-POROUS, MAX. 2 PORES/mm² WITH DMG-TEST
SURFACE ROUGHNESS Ra MAX. 0.4µm

PLATING AT CONTACT AREA OF SHORTING CLIP (COMPONENT RETAINER):
0.8 +0.6µm Au OVER MIN 2.0 +8.0µm Ni
MIN. 0,8µm AuCo, HARDNESS 130 TO 200 HK25
POROSITY - MAX ONE PORE PER ONE SHORTING BAR LEG
DIAMETER X OF PORES WHICH ARE COUNTED X > 0,05mm
MAX PORE DIAMETER ALLOWED IS 0,4mm
TO BE TESTED ACCORDING SIEMENS NORM SN97906 (DMG - TEST)
OR ASTM B735 - 95 (NITRIC ACID VAPOR - TEST)
SURFACE ROUGHNESS Ra MAX. 0.4µm

CIRCUIT RESISTANCE 100 mΩMAXIMUM
FROM PIN TO PIN OVER SHORTING CLIP

BULK RESISTANCE OF SHORTING CLIP MAXIMAL 40MΩ
MEASURED BY 4-WIRE-MEASURMENT METHOD (100mA)

MATERIAL:
ISULATION RING (RETAINER)
PBT GF 15% OR MATCHABLE MATERIAL, E = 5-6 GPa

THE MALE CONTACTS SHALL BE MANUFACTURED OF SOLID MATERIAL
(NOT FOLDED OR HOLLOW)

ALL MISSING INFORMATIONS ARE SHOWN ON THE
USCAR DRAWING 999-U-002-1-Z02 SHEET ONE AND TWO

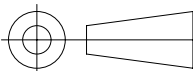
ALLOWED TOLERANCE FOR DIMENSIONS WITHOUT
TOLERANCE SPECIFICATION

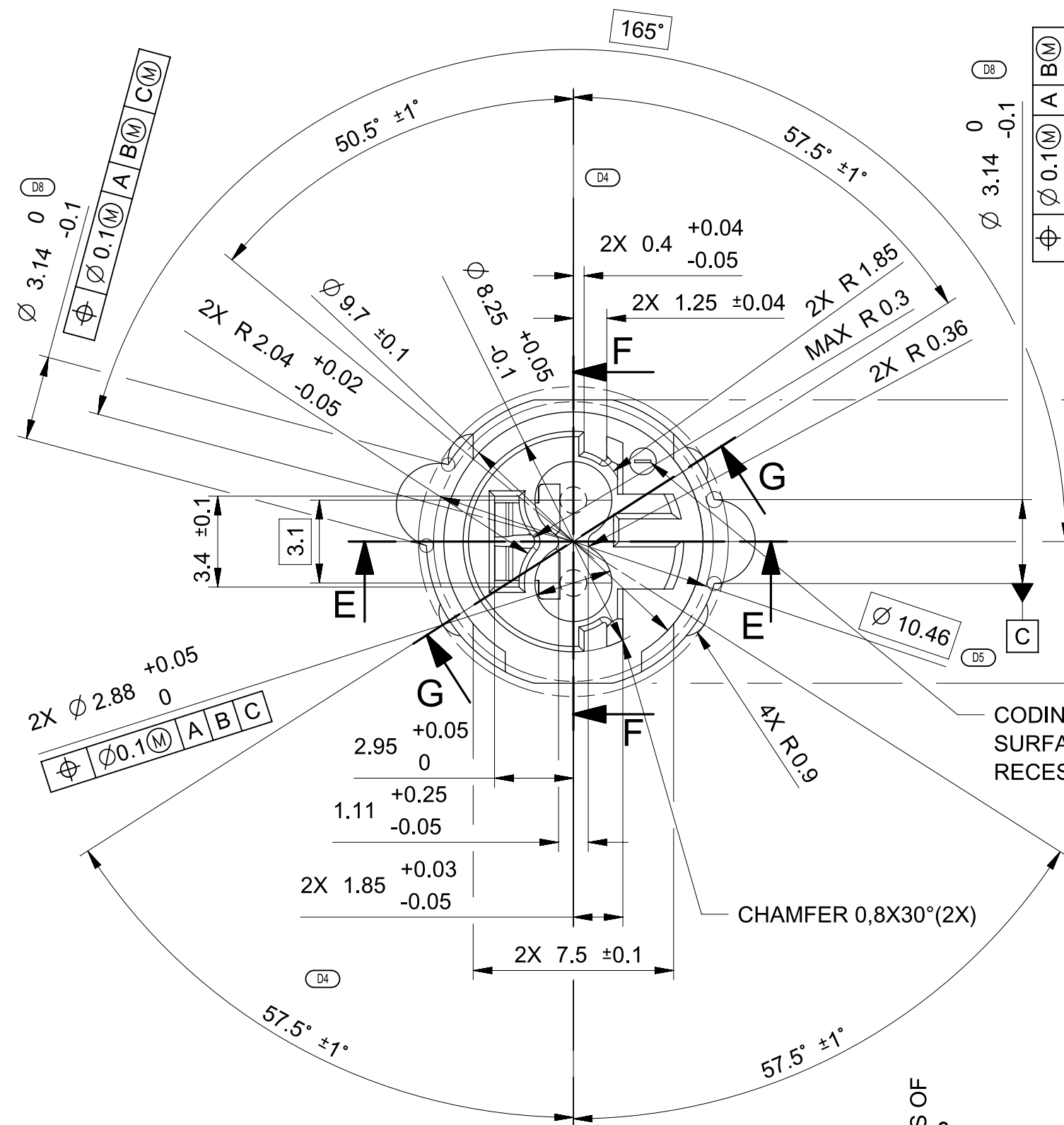
NOTICE:
This drawing, or portions of it are controlled by the Electrical Wiring
Components Application Partnership(EWCAP) a subgroup of the United
States Council for Automotive Research LLC (USCAR LLC).

USCAR is an LLC consisting of members from FCA US LLC, Ford Motor Company
and GM Corporation.

Any change to a EWCAP controlled portion of this drawing, including a revision
record change must be approved, in writing, by the responsible EWCAP
representative from each USCAR member company. Each EWCAP representative
authorized to sign for his or her member company is responsible for obtaining all
necessary approvals within that company prior to signing for the approval of the
change.

EWCAP expressly prohibits any party from changing either any EWCAP controlled
portion of this drawing or any associated tooling before receiving approval, signed
by the authorized representatives, of the USCAR member companies. Reference to
the signed change notice must be entered in the drawing control column.

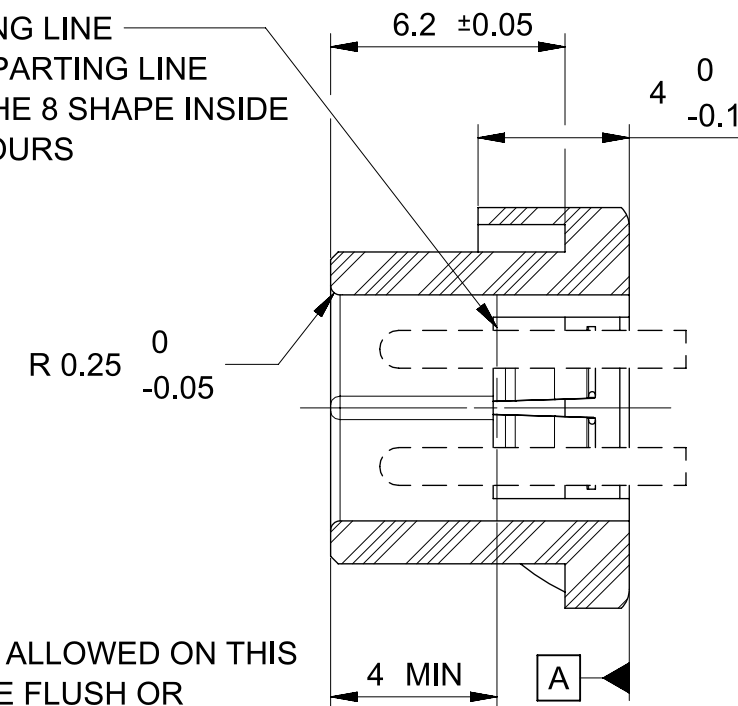
156	E	SHEET-2 NOTE "CODING IDENTIFICATION ALLOWED ON THIS SURFACE ONLY. MUST BE FLUSH OR RECESSED INTO A POCKET" WAS "POSITION OPTIONAL VIEWABLE IN ASSEMBLED STATUS"	04/15/19	HOL	-
116	D	REDRAWN AFTER REV C	04/20/16	HOL	-
	D1	SHEET-4 - ADDED GAGE FOR CHECKING.			
	D2	SHEET-5 - ADDED ASSEMBLY TOOL.			
	D3	ADDED SHEET-2 AND SHEET-3			
	D4	SHEET-2 - DIM 12.3± 0.1 (2X) WAS REMOVED			
	D5	SHEET-2 - DIM [2.10.46] ADDED			
	D6	SHEET-2 - DIM 2X 2.4 +0.1/-0.3 WAS DIM 2X 2.4 +0.1/-0.2			
	D7	SHEET-1 - REMOVED COD IV			
092	C	"RAL # 9011 OR SIMILAR" removed	15/08/11	-	-
		"RAL # 6027 OR SIMILAR" removed			
		"RAL # 1021 OR SIMILAR" removed			
		"RAL # 4005 OR SIMILAR" removed			
		NOTE "RADIUS NOT POSSIBLE AROUND THE COMPLETE 8 SHAPE GEOMETRY" REMOVED			
		NOTE "THE USE OF THE PIN POSITION TOLERANCE AREA CAN LEAD TO AN ALIGNMENT OF THE PIN'S CAUSED BY THE MATING OF THE SQUIB CONNECTOR" DELETED.			
		"ALTERNATIVE SHORTING BAR DESIGN" VIEWS ADDED.			
		NOTE "THE MALE CONTACTS SHALL BE MANUFACTURED OF SOLID MATERIAL (NOT FOLDED OR HOLLOW)" ADDED.			
079	B	RETENTION BUMPS ADDED, IN TOP VIEW AND ADDITIONAL VIEW B-B	02/09/10	-	-
	I	CODING IV, BLUE PURPLE, ADDED			
	I	CODING I-III, EDGE OF WORKPIECES, +0.05 -0.1 WAS +0.02 -0.01, CORRECTED			
	I	DIMENSION 4 MIN WAS 4.15± 0.15, CHANGED			
	I	NOTE 0.4N WAS 0.4cN CORRECTED			
	I	NOTE AT COMPONENT RETAINER 2.0 +8.0 µm Ni WAS 2.0 +4.0 µm Ni CHANGED			
-	A	INITIAL RELEASE	08/24/07	-	-
CHANGE SERIAL NUMBER	LET	REVISION RECORD	DATE	DWN	CHK
TOLERANCES (UNLESS OTHERWISE SPECIFIED)			THIRD ANGLE PROJECTION 		
DIMENSIONS ARE IN MILLIMETERS					
ANGLES ± 1°					
USCAR-EWCAP					
SCALE	5:1	DRAWN BY	L.PARTHEEBAN	CHECKED BY	H.HOLWEG
TITLE		05/11/2016			
SHORTING CLIP RETAINER, AK-2					
SHEET	DRAWING NUMBER		SIZE	DO NOT SCALE DRAWING	REVISION LEVEL
1 of 5	999-U-002-1-Z03		C	COMPUTER AIDED DRAWING	E



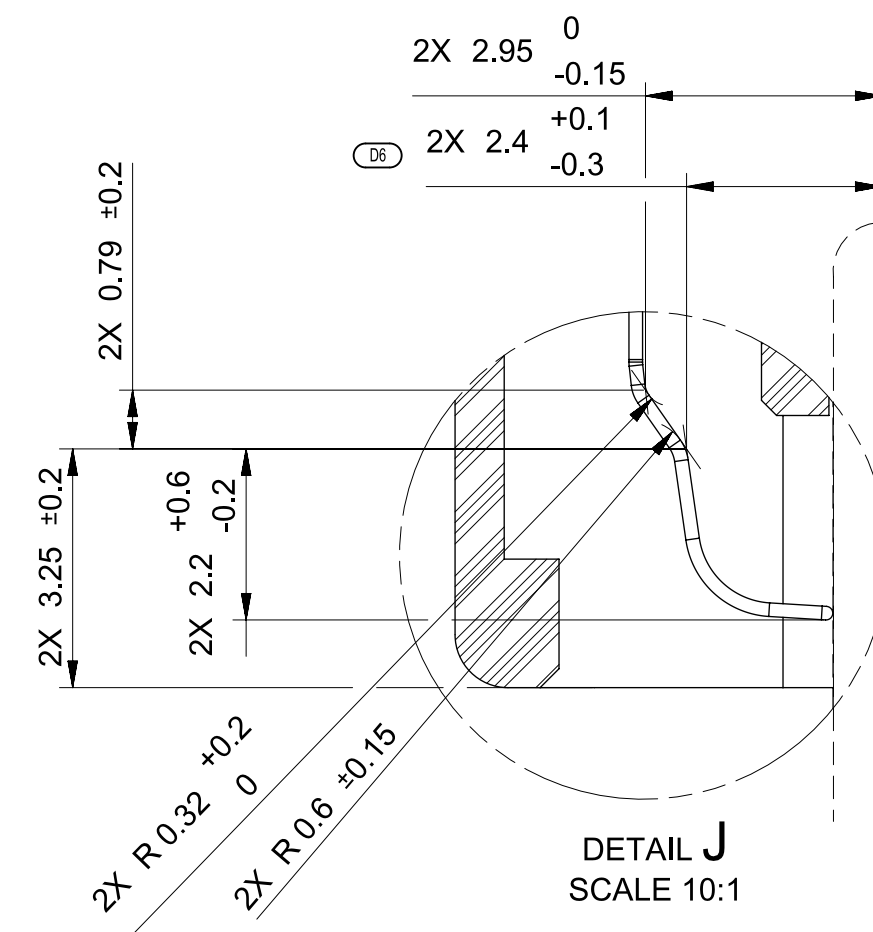
CODING IDENTIFICATION ALLOWED ON THIS SURFACE ONLY. MUST BE FLUSH OR RECESSED INTO A POCKET.

FLATTENING OPTIONAL

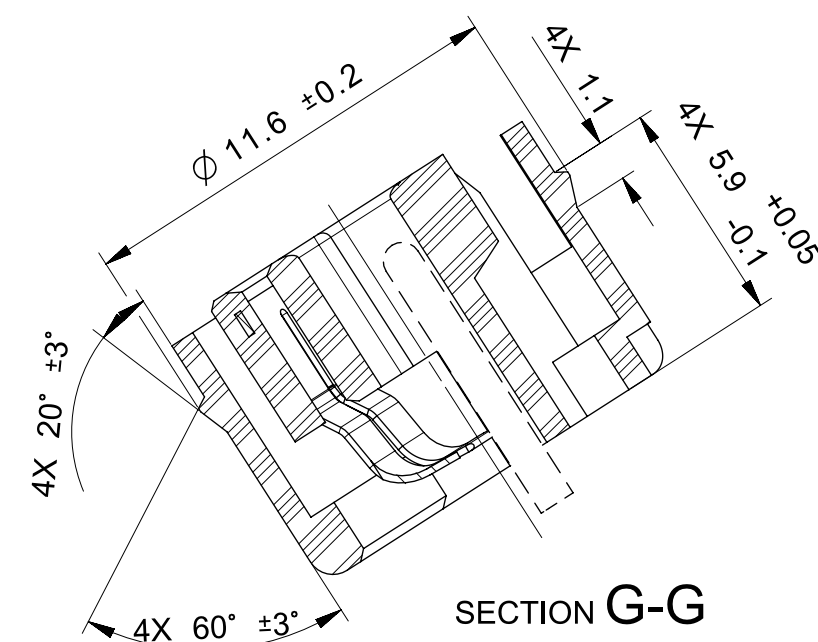
PARTING LINE
TOOL PARTING LINE
FOR THE 8 SHAPE INSIDE
CONTOURS



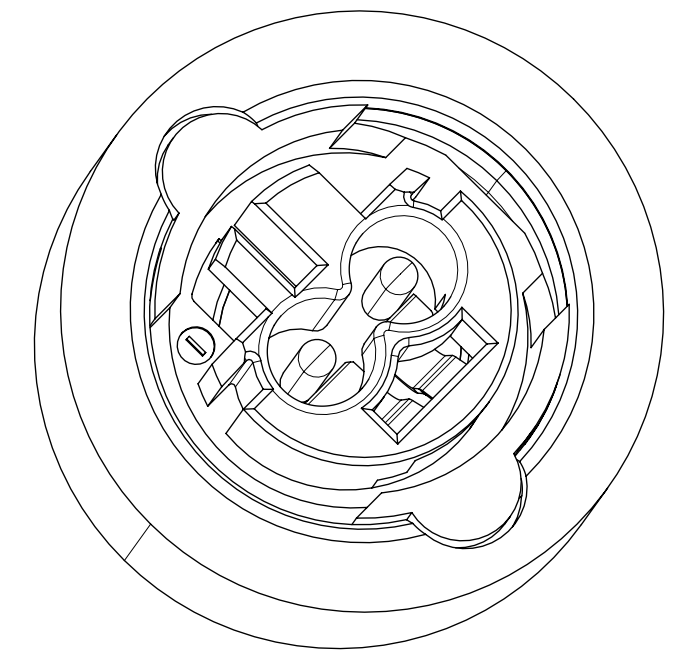
SECTION F-F



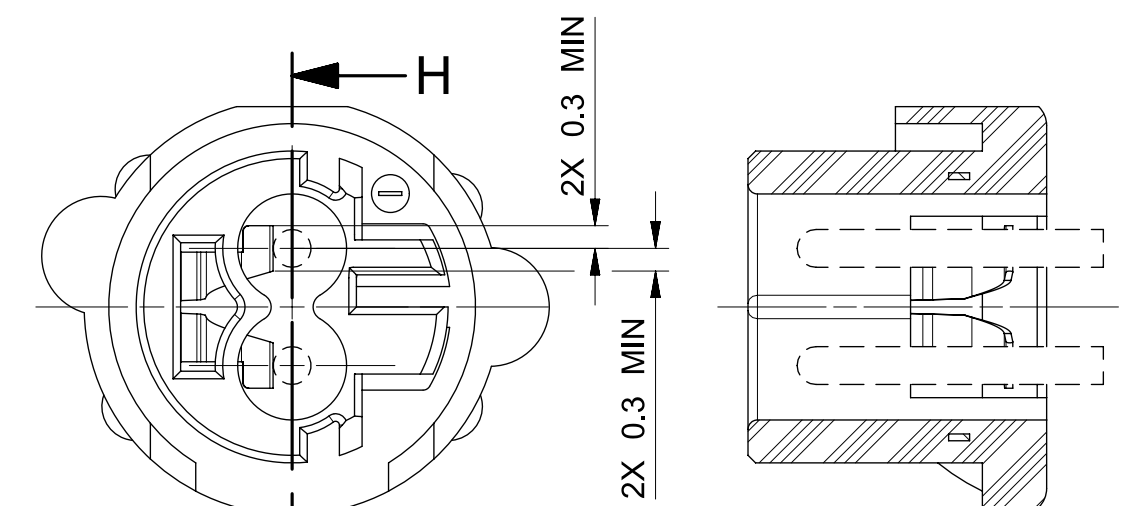
DETAIL J
SCALE 10:1



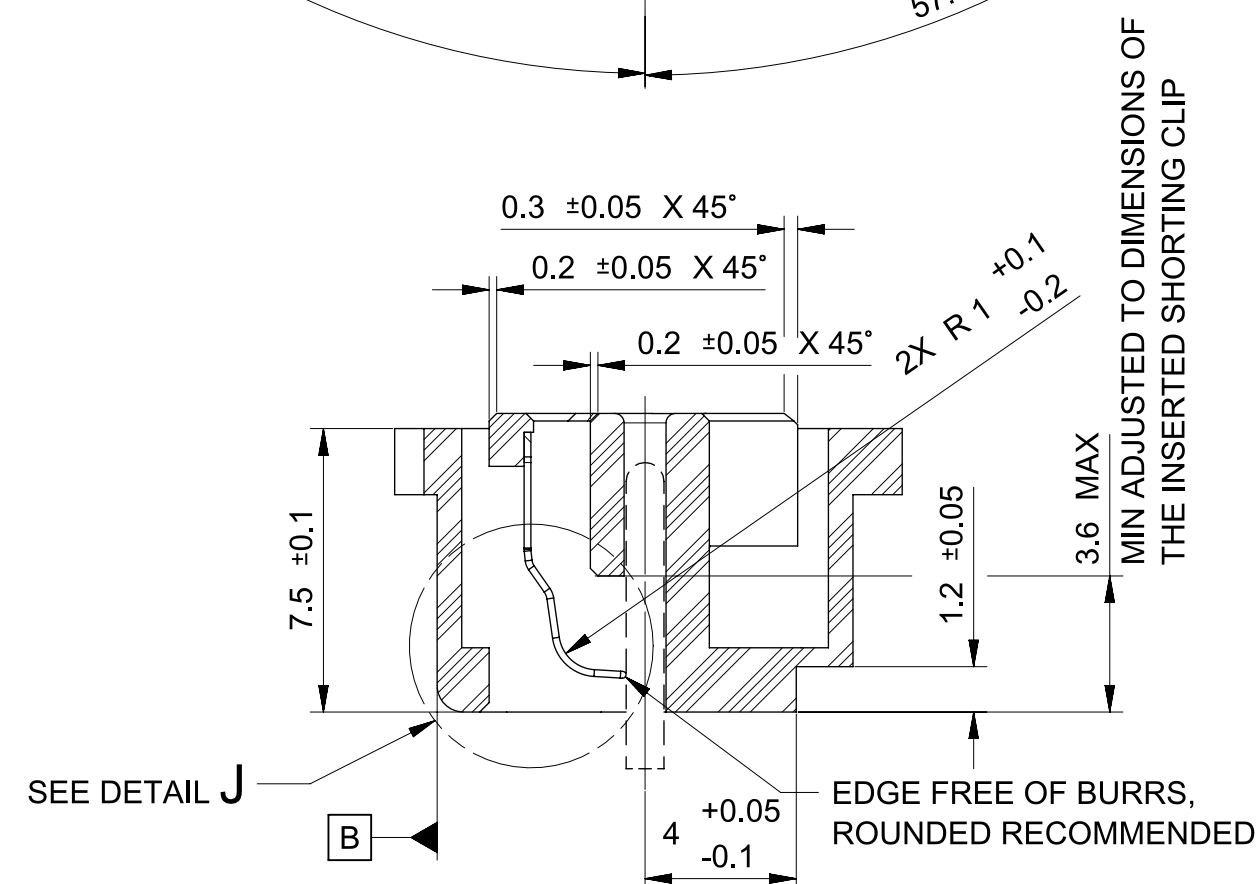
SECTION G-G



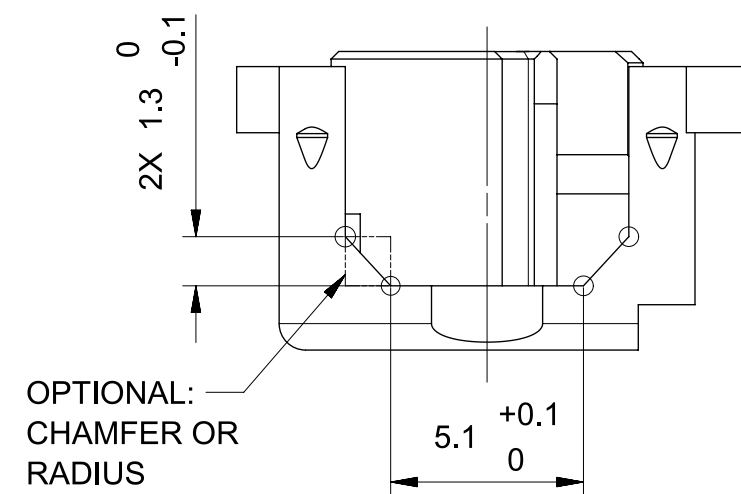
ALTERNATIVE SHORTING BAR DESIGN

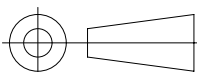


SECTION H-H



SECTION E-E

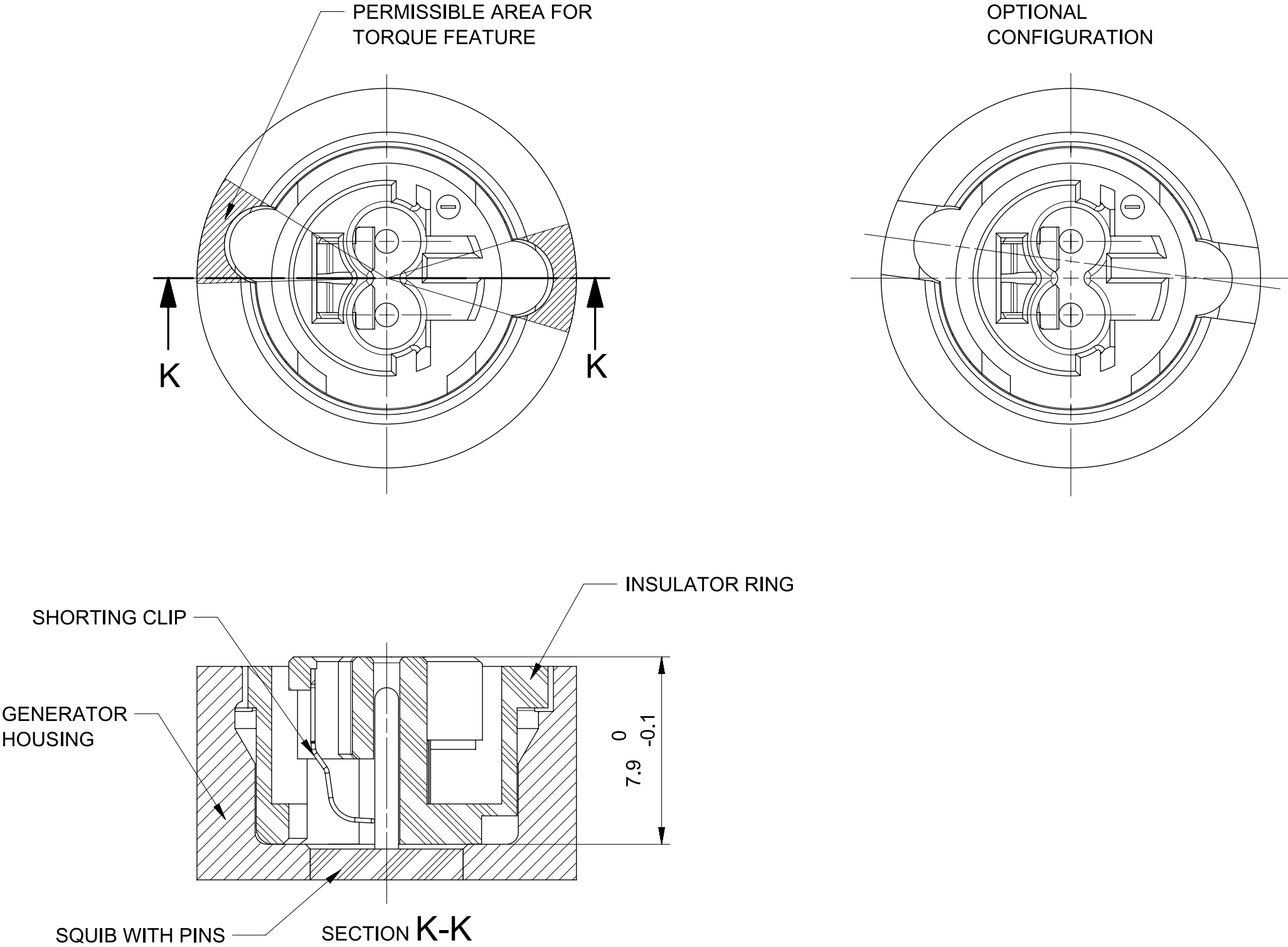


TOLERANCES (UNLESS OTHERWISE SPECIFIED)				<div>THIRD ANGLE PROJECTION</div> 		
DIMENSIONS ARE IN MILLIMETERS						
ANGLES $\pm 1^\circ$						
USCAR-EWCAP						
SCALE	5:1	DRAWN BY	L.PARTHEEBAN	CHECKED BY	H.HOLWEG	
					DATE	05/11/2016
TITLE						
SHORTING CLIP RETAINER, AK-2						
SHEET	DRAWING NUMBER		SIZE	DO NOT SCALE DRAWING		REVISION LEVEL
2 of 5	999-U-002-1-Z03		C	COMPUTER AIDED DRAWING		E

DELPHI
DELPHI PACKARD ELECTRICAL/ELECTRONIC ARCHITECTURE
NUREMBERG GERMANY
999-U-002-1-Z03

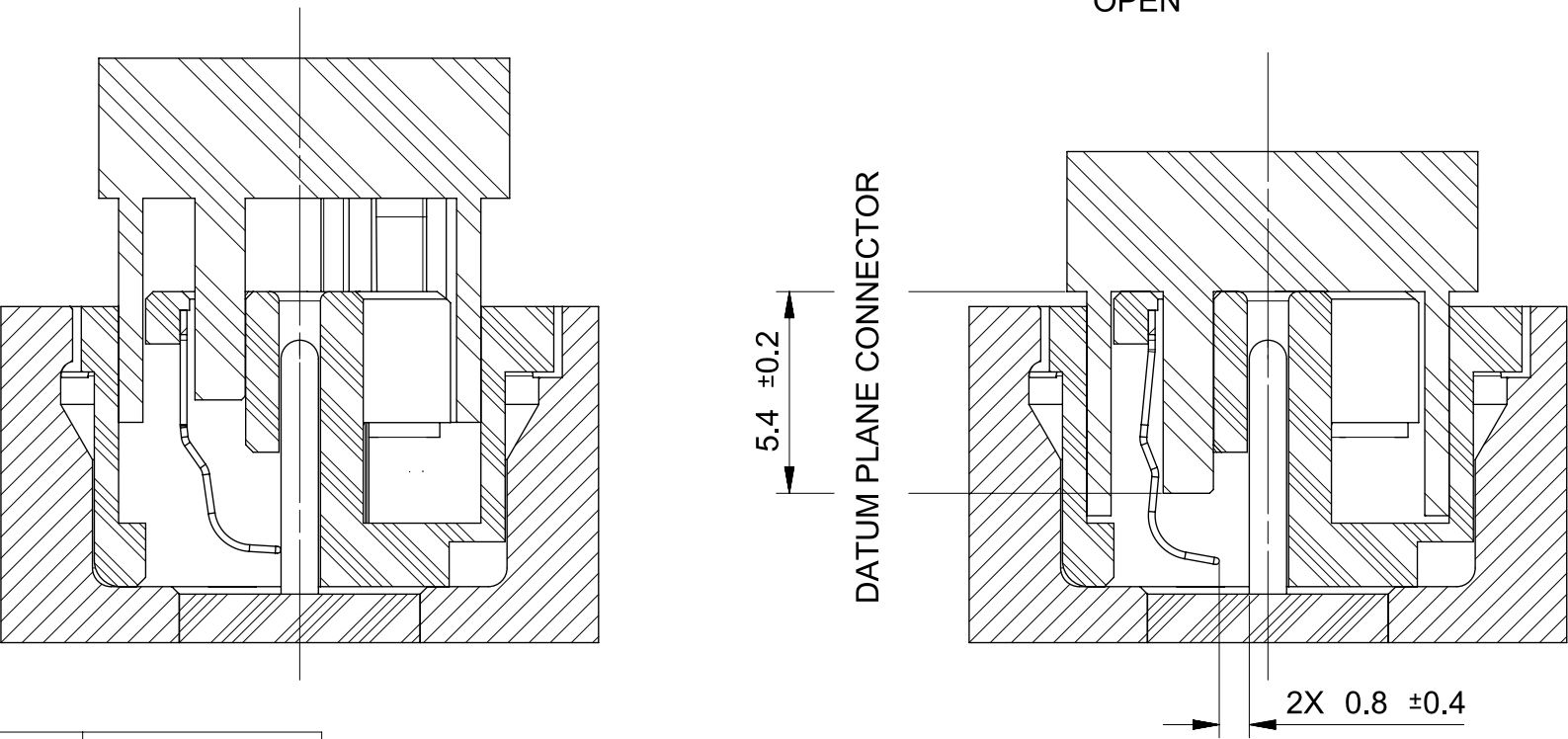
GENERATOR

CODING I SHOWN



CONNECTOR IS IN CONTACT,
SHORTING CLIP CLOSED

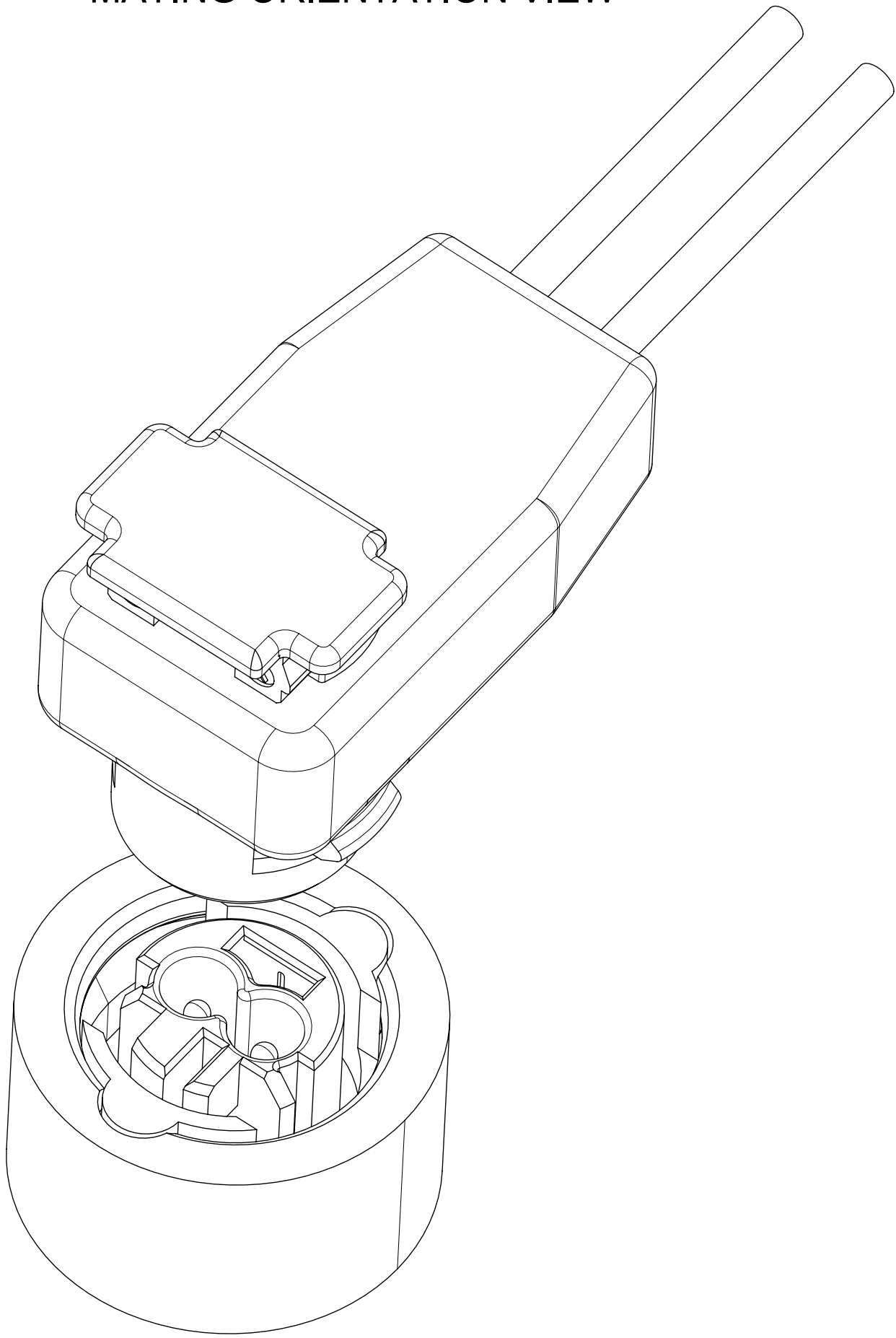
CONNECTOR MATED, WITH
POSITION ASSURANCE
(CPA), SHORTING CLIP
OPEN



TEST OF OPENING DISTANCE SHORTING CLIP

MATRIX OF STATUS	CONNECTOR NOT MATED	CONNECTOR MATED
CONTACTS	OPEN	CLOSED
SHORTING CLIP	CLOSED	OPEN
LOCKING HOOKS	UNLOCKED	LOCKED

MATING ORIENTATION VIEW

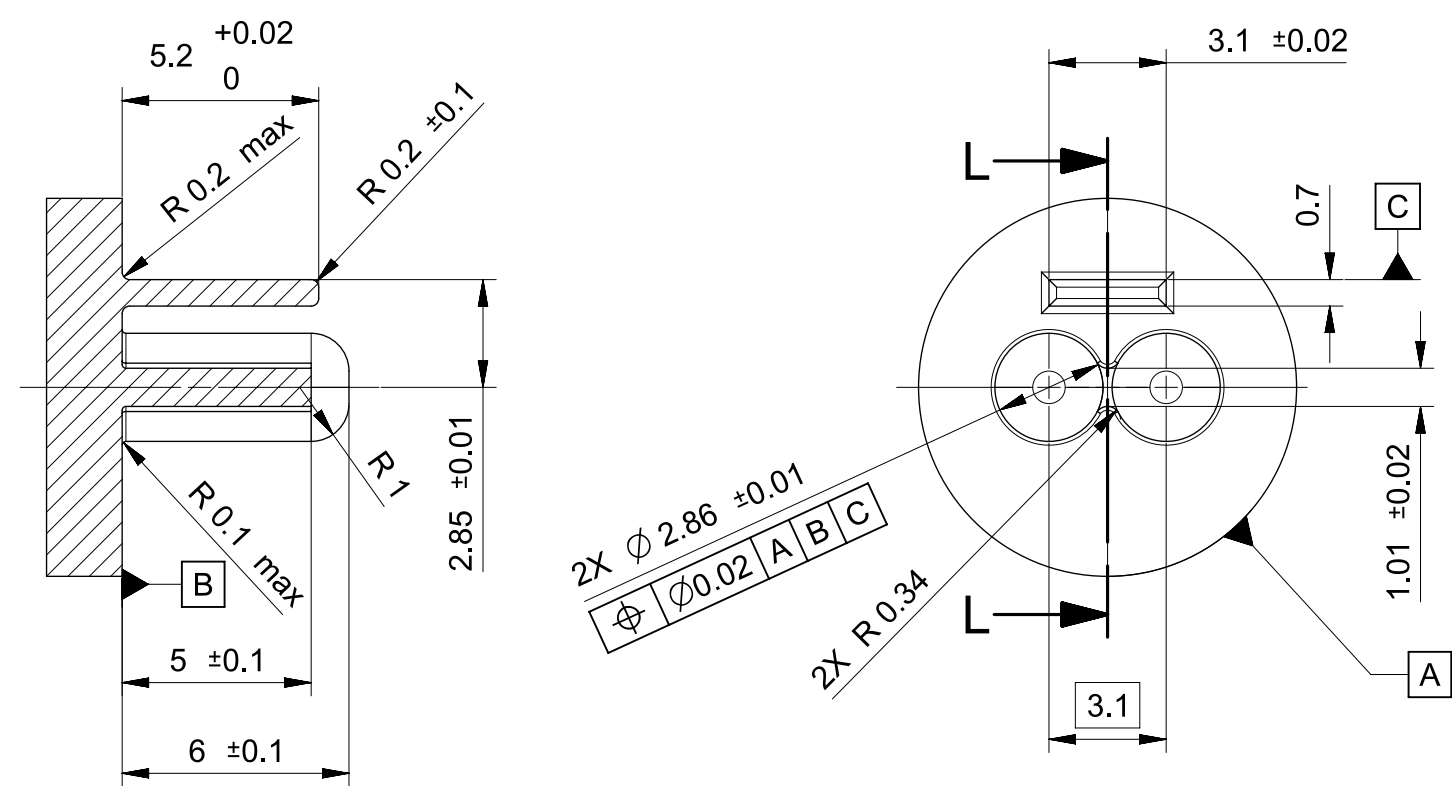


GENERATOR WITH CODING I, BLACK DISPLAYED

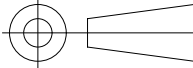
TOLERANCES (UNLESS OTHERWISE SPECIFIED)				THIRD ANGLE PROJECTION	
DIMENSIONS ARE IN MILLIMETERS					
ANGLES ± 1°					
USCAR-EWCAP					
SCALE	5:1	DRAWN BY	L.PARTHEEBAN	CHECKED BY	H.HOLWEG
TITLE				DATE	05/11/2016
SHORTING CLIP RETAINER, AK-2					
SHEET	DRAWING NUMBER		SIZE	DO NOT SCALE DRAWING	REVISION
3 of 5	999-U-002-1-Z03		C	COMPUTER AIDED DRAWING	E

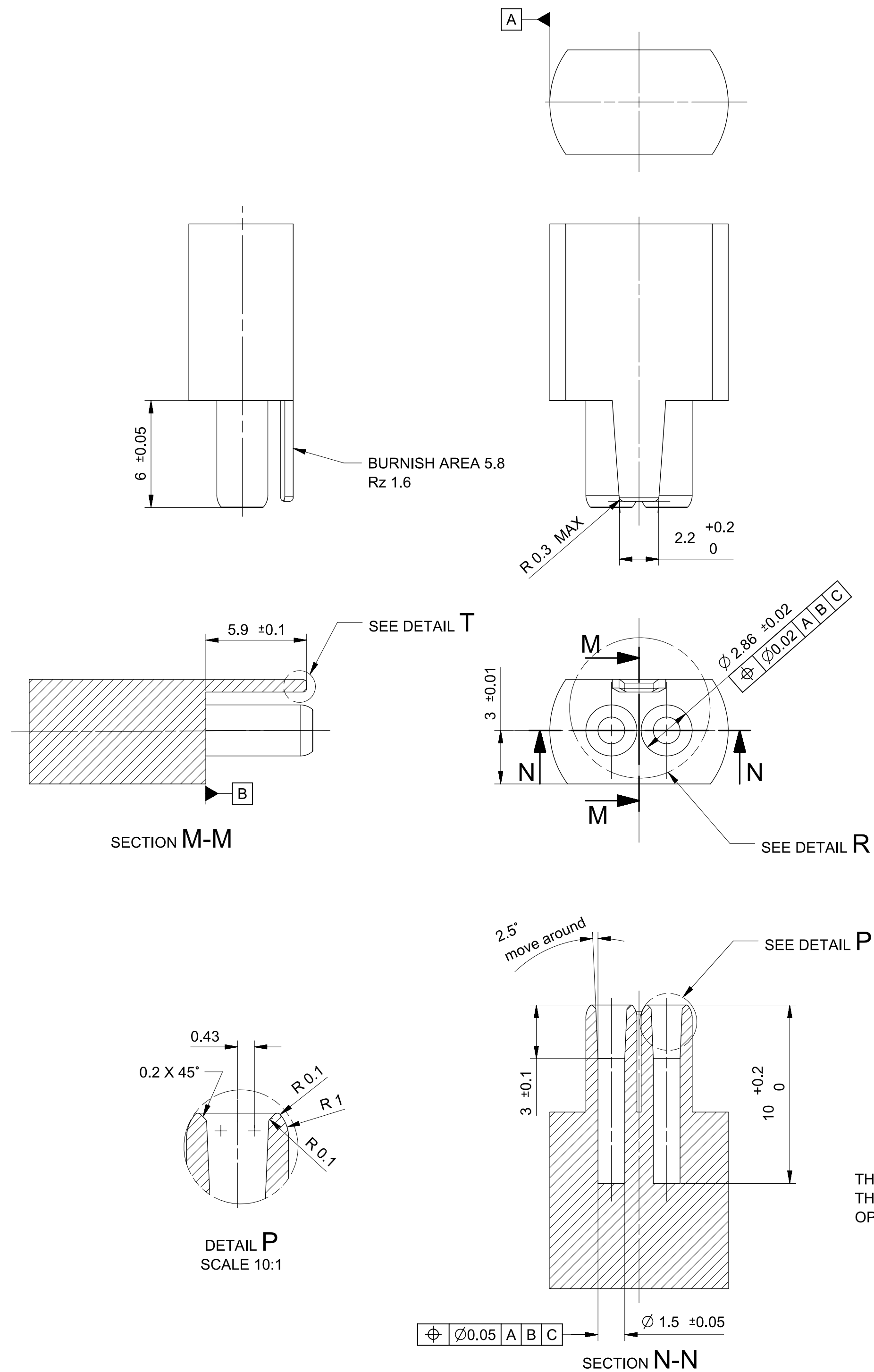
DELPHI
DELPHI PACKARD ELECTRICAL/ELECTRONIC ARCHITECTURE
NUREMBERG GERMANY
999-U-002-1-Z03

RECOMMENDED GAGE FOR CHECKING MINIMUM SHORTING CLIP OPENING



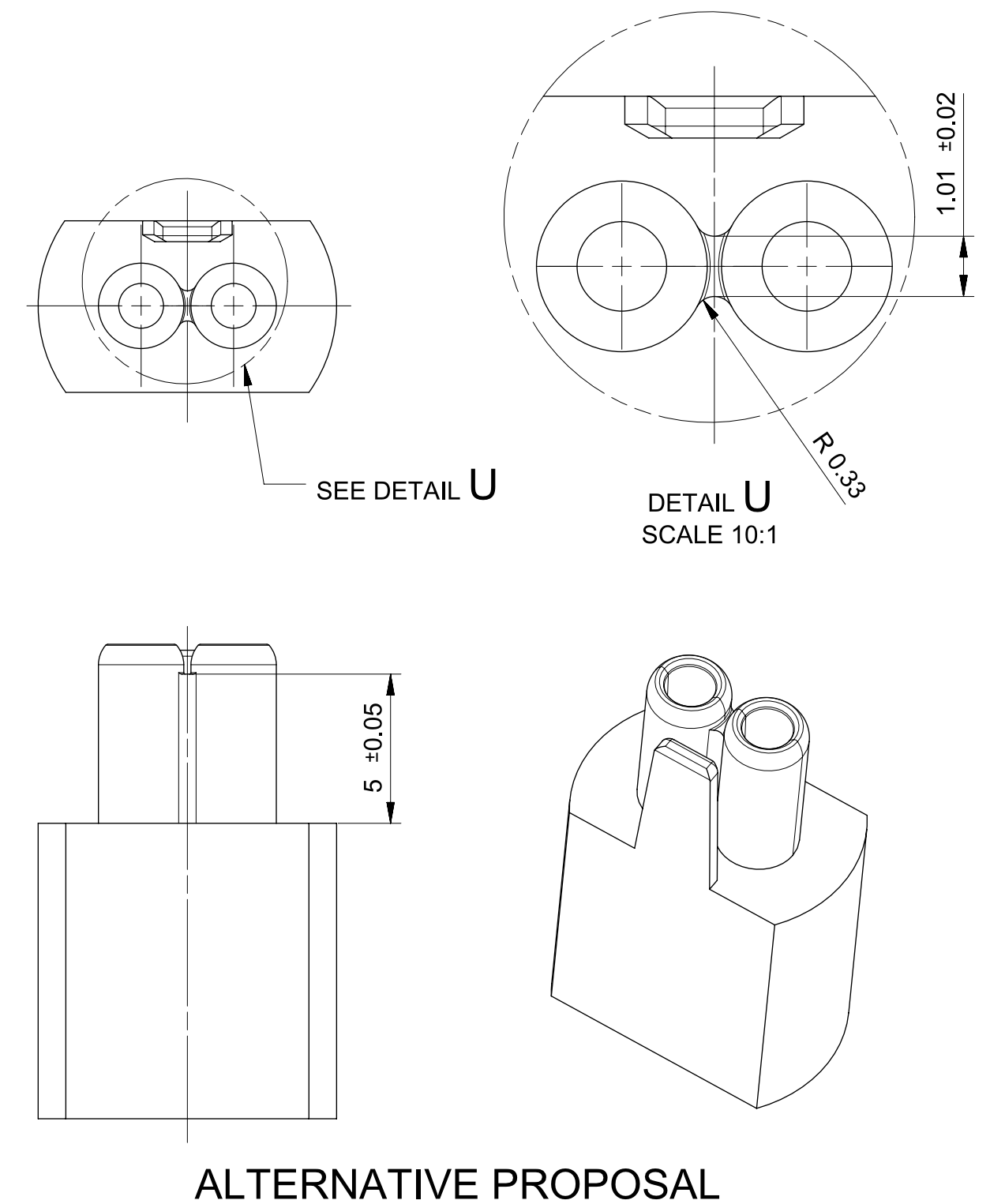
SECTION L-L

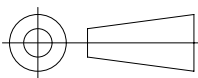
TOLERANCES (UNLESS OTHERWISE SPECIFIED)				<div>THIRD ANGLE PROJECTION</div> 	
DIMENSIONS ARE IN MILLIMETERS					
ANGLES ± 1°					
USCAR-EWCAP					
SCALE 5:1		DRAWN BY L.PARTHEEBAN		CHECKED BY H.HOLWEG	
TITLE GAGE FOR CHECKING - AK-2				DATE 05/11/2016	
SHEET 4 of 5	DRAWING NUMBER 999-U-002-1-Z03		SIZE C	DO NOT SCALE DRAWING COMPUTER AIDED DRAWING	REVISION LEVEL E



THE BOTH TOOLS ARE ONLY PROPOSALS.
THE FUNCTION AND PRODUCTION OF THE TOOLS ARE UNDER REPOSIBILITY OF THE
OPERATING COMPANY

DELPHI
DELPHI PACKARD ELECTRICAL/ELECTRONIC ARCHITECTURE
NUREMBERG GERMANY
999-U-002-1-Z03



TOLERANCES (UNLESS OTHERWISE SPECIFIED)				<div>THIRD ANGLE PROJECTION</div> 	
DIMENSIONS ARE IN MILLIMETERS					
ANGLES $\pm 1^\circ$					
<div>USCAR-EWCAP</div>					
SCALE 5:1		DRAWN BY L.PARTHEEBAN		CHECKED BY H.HOLWEG	
				DATE 05/11/2016	
<div>TITLE</div> <div>Inserting Tool Kojiri Retainer</div>					
SHEET 5 of 5		DRAWING NUMBER 999-U-002-1-Z03		SIZE C	DO NOT SCALE DRAWING COMPUTER AIDED DRAWING
					REVISION LEVEL E