

The floor plan shows a rectangular building with a central corridor. The plan is divided into two main sections by a vertical line. The left section contains a large room (1) and a smaller room (2). The right section contains a large room (3) and a smaller room (4). The central corridor is labeled 5. The building has a complex roofline with several protrusions and recesses. The plan is labeled '1st floor' at the bottom.

Technical drawing of the top view of a PCB. The drawing shows a rectangular board with a complex, irregular shape. It features a central area with a grid of 16 small rectangular pads arranged in two rows of eight. The board has several mounting holes and a complex edge profile. Two dimensions are indicated: 9.3 and 11.1, both in millimeters, with arrows pointing to the respective dimensions.

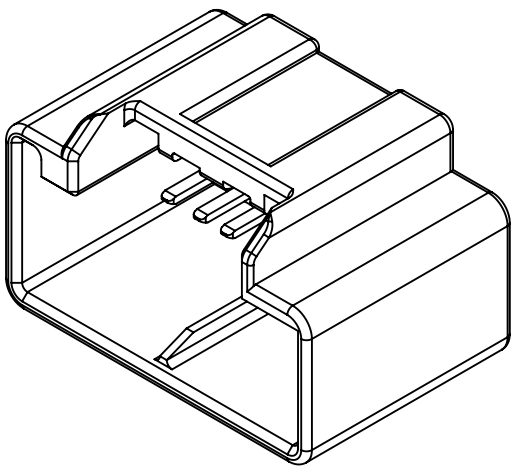
Technical drawing of a rectangular container, likely a fuel tank, showing a top-down view. The drawing includes a central vertical line indicating symmetry. Dimensions are provided in millimeters (mm):

- Overall width: 11.1
- Overall height: 9.3
- Internal width (between side rails): 2

Labels are present on the drawing:

- Label 1: Located on the left side rail.
- Label 2: Located on the right side rail.
- Label 3: Located on the bottom rail.
- Label 4: Located on the top rail.
- Label 5: Located on the bottom rail, near the center.
- Label 6: Located on the top rail, near the center.
- Label 7: Located on the bottom rail, near the right side.
- Label 8: Located on the top rail, near the right side.
- Label 9: Located on the bottom rail, near the right side.
- Label 10: Located on the top rail, near the right side.

The diagram shows a 4x4 grid of 16 cells, labeled 1 through 16. The cells are arranged in two rows of eight. The top row contains cells 1 through 8, and the bottom row contains cells 9 through 16. Each cell is represented by a square with a diagonal line from the top-left to the bottom-right. The cells are numbered 1 through 16. The diagram includes dimension lines indicating a width of 0.5 MIN and a height of 1.5 MIN. The text "PACKING VIEW" is centered below the diagram.



ISOMETRIC VIEW
2:1


USCAR is an LLC consisting of members from FCA US LLC, Ford Motor Company and GM Corporation.

Any change to a EWCAP controlled portion of this drawing, including a revision record change must be approved, in writing, by the responsible EWCAP representative from each USCAR member company. Each EWCAP representative authorized to sign for his or her member company is responsible for obtaining all necessary approvals within that company prior to signing for the approval of the change.

EWCAP expressly prohibits any party from changing either any EWCAP controlled portion of this drawing or any associated tooling before receiving approval, signed by the authorized representatives, of the USCAR member companies. Reference to the signed change notice must be entered in the drawing control column.

[illegible]

| | | | | | |
|----------------------------|-----|-----------------|---------|-----|-----|
| - | A | RELEASED | 2-17-17 | DB | JM |
| CHANGE SERIAL NUMBER | LET | REVISION RECORD | DATE | DWN | CHK |

| | | |
|---|--|---|
| TOLERANCES (UNLESS OTHERWISE SPECIFIED) | |  <p>THIRD ANGLE PROJECTION</p> |
| DIMENSIONS ARE IN MILLIMETERS | | |
| ANGLES $\pm 0^{\circ} 30'$ | | |
| | | |


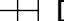
| | | | |
|--------------|-----------------------|------------------------|-----------------|
| SCALE 5:1 | DRAWN BY D.BENNETT | CHECKED BY J.MILLER | DATE 2-17-17 |
|--------------|-----------------------|------------------------|-----------------|

16 WAY 2X8 UNSEALED INTERFACE 1.2mm CONNECTORS

| | | | | |
|-----------------|-----------------------------------|------------|--|------------------------|
| SHEET 1 of 2 | DRAWING NUMBER 120-U-016-2-Z01 | SIZE A2 | DO NOT SCALE DRAWING COMPUTER AIDED DRAWING | REVISION LEVEL A |
|-----------------|-----------------------------------|------------|--|------------------------|

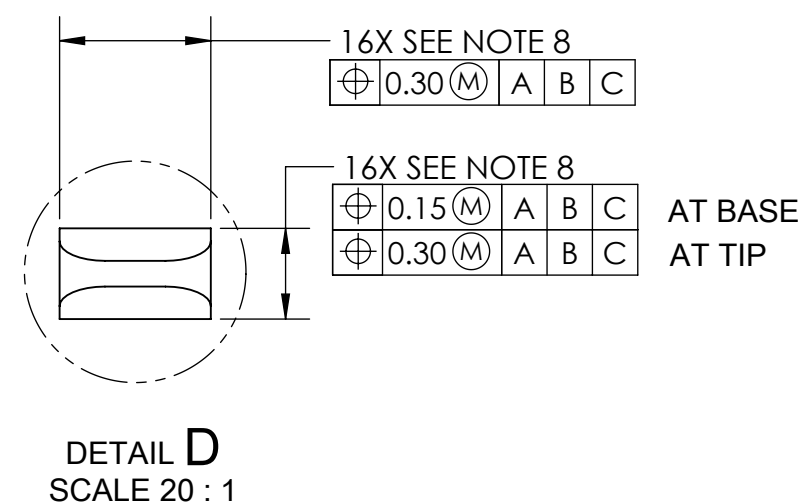
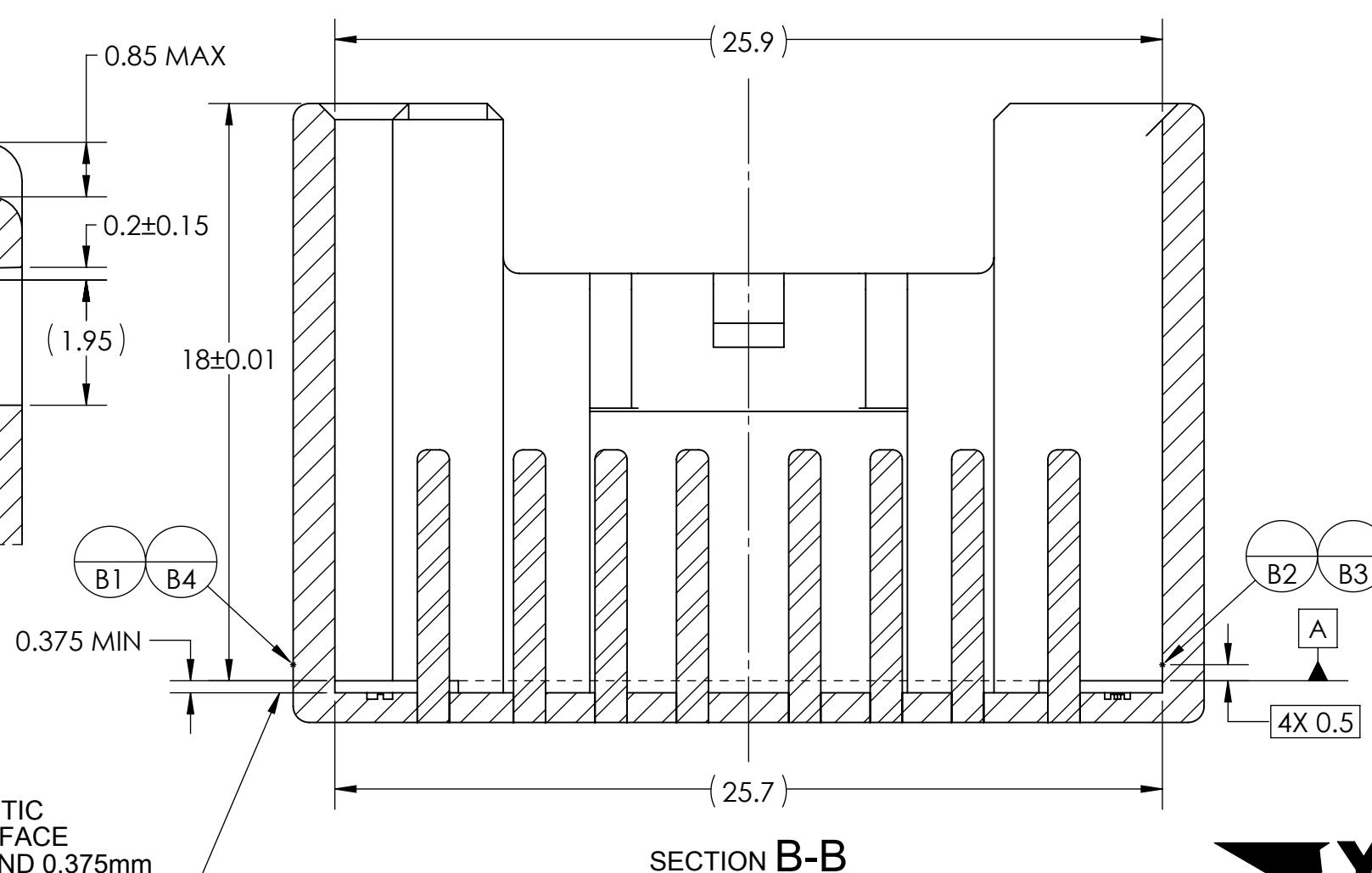
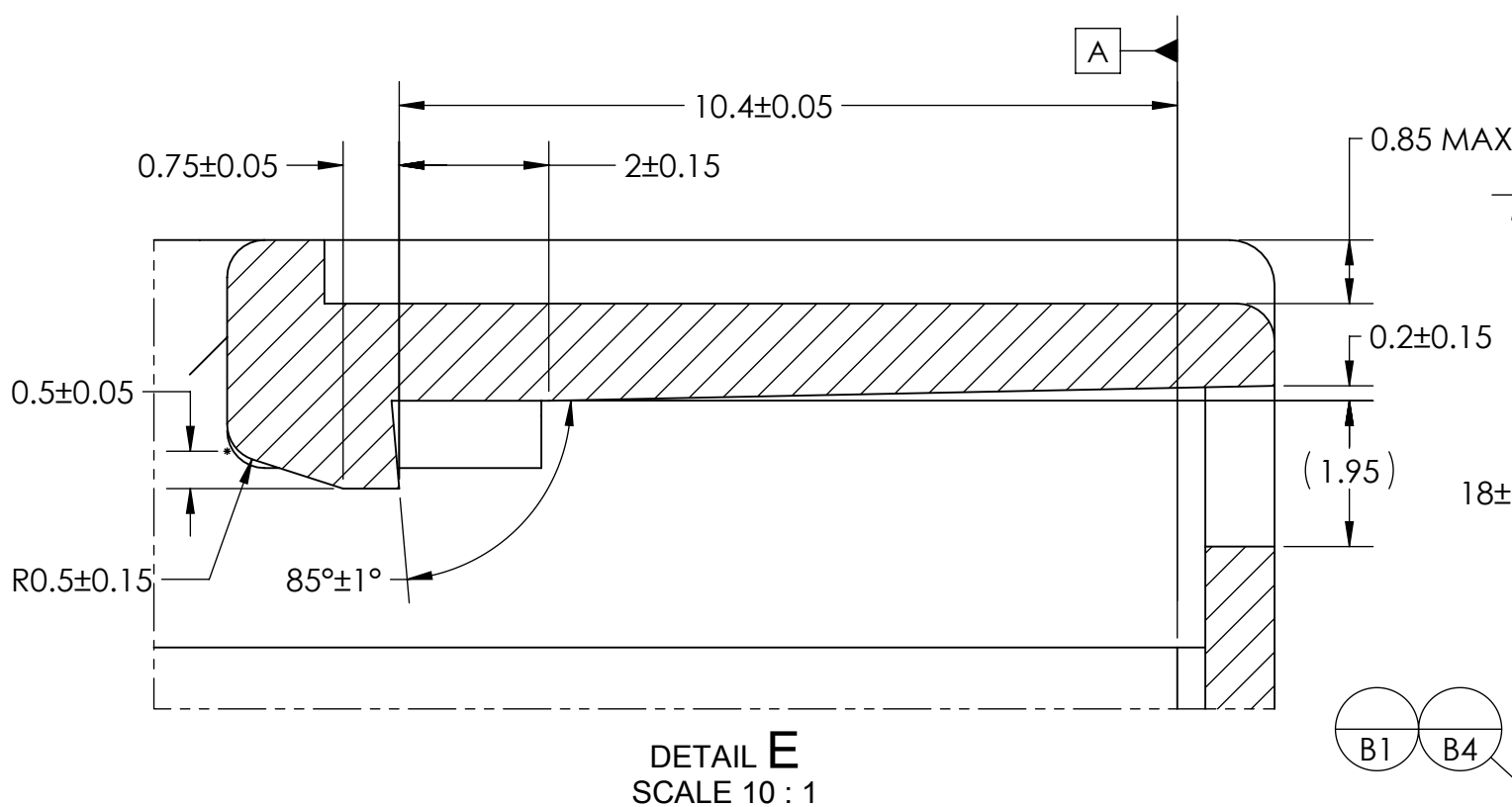
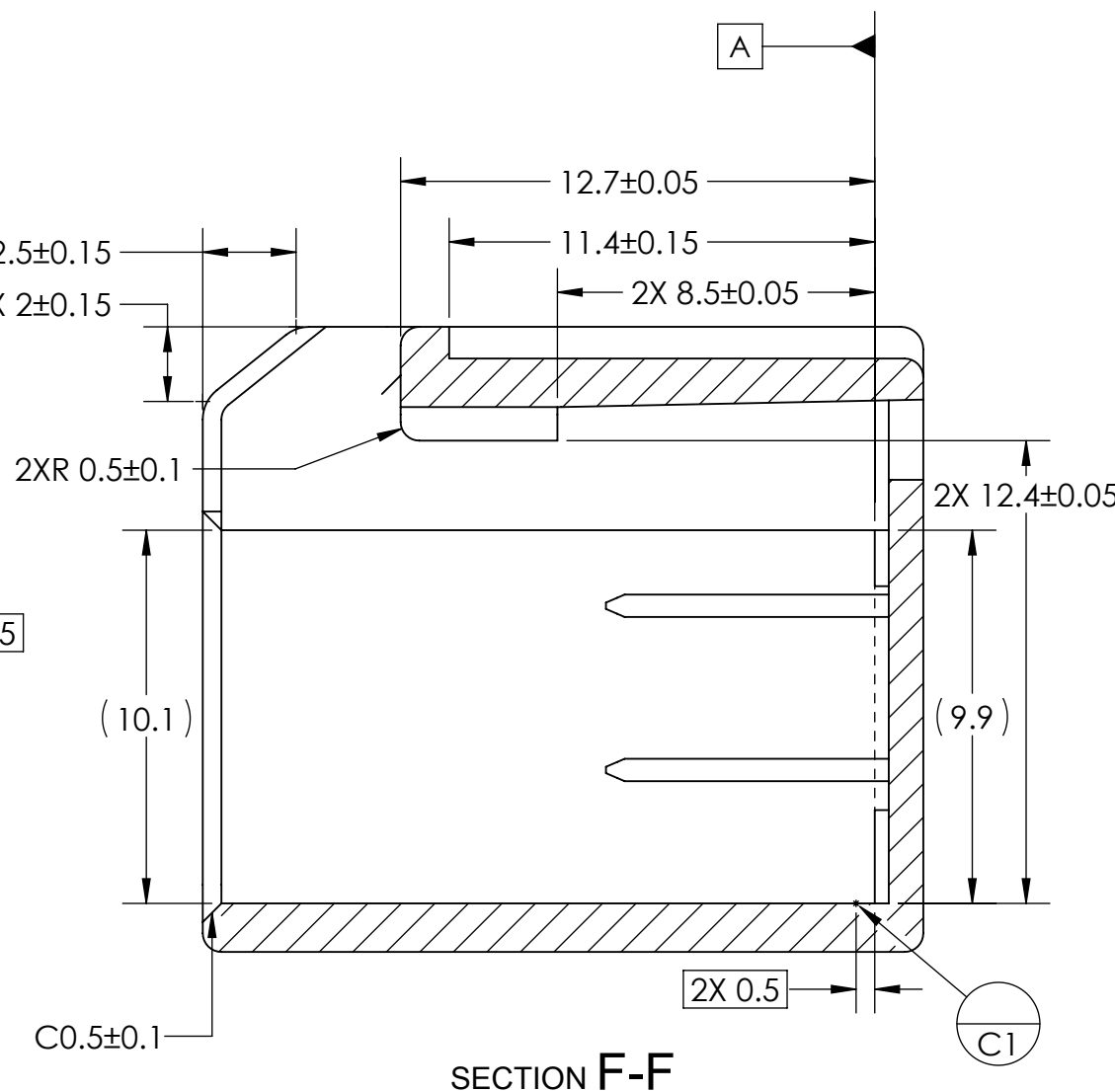
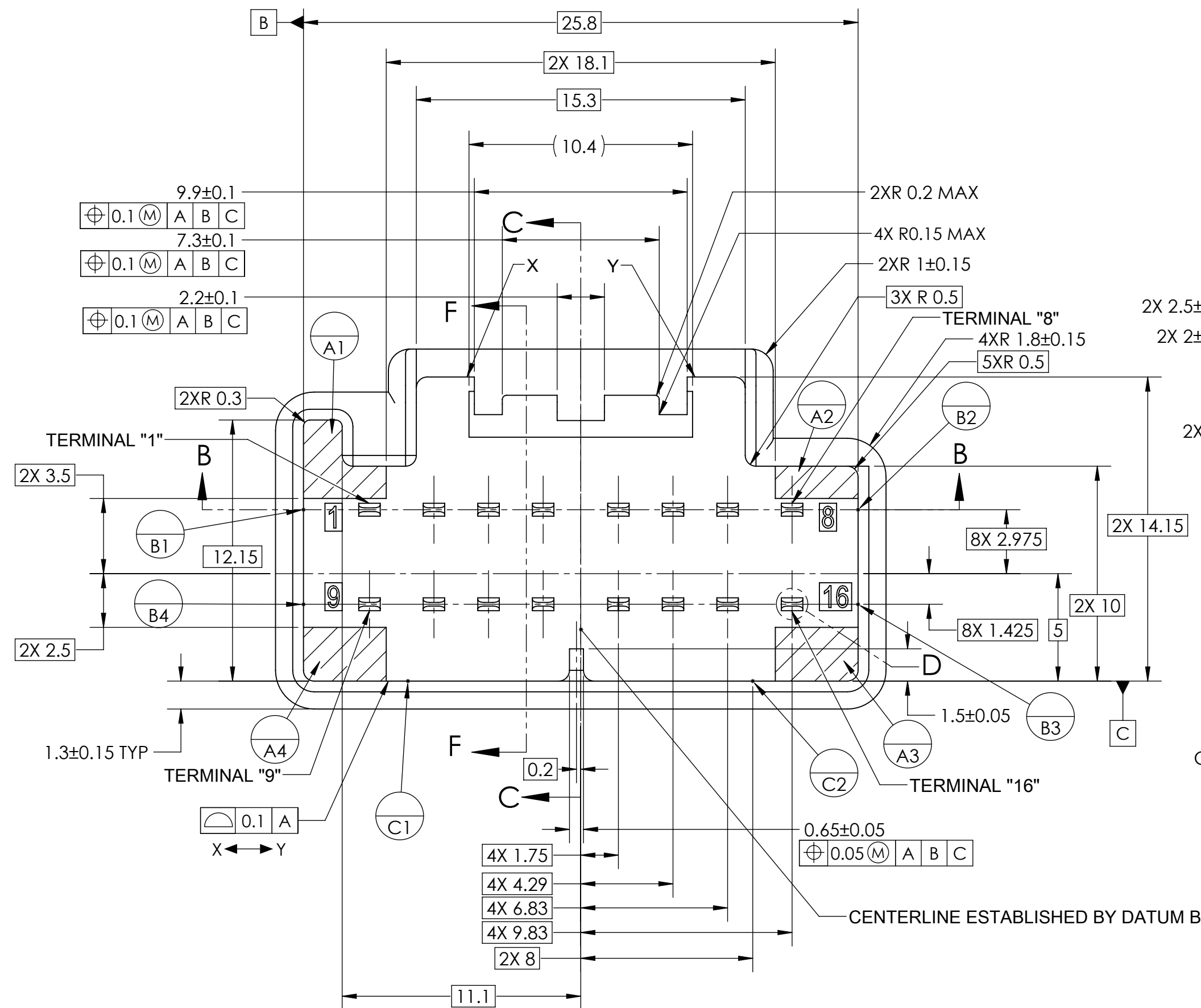
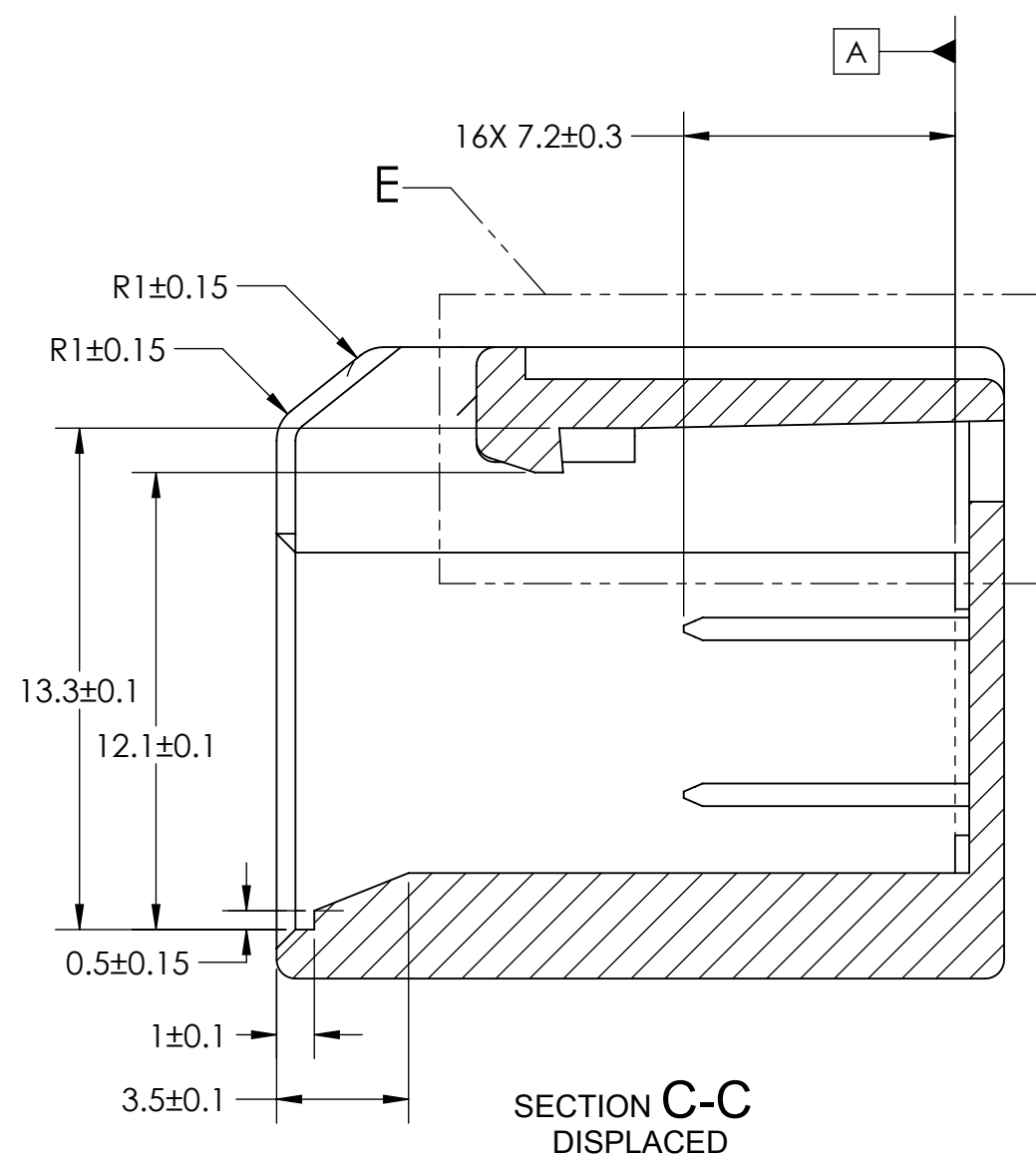
| | | |
|-------------------|----------|------------------------------|
| 120-U-016-2-A01 | A | BLACK |
| 120-U-016-2-B01 | B | LT. GRAY |
| 120-U-016-2-C01 | C | DK. GRAY |
| 120-U-016-2-D01 | D | BLACK |
| EWCAP PART NUMBER | POLARITY | MATING CONNECTOR COLOR |

NOTES:

1. DIMENSIONING AND TOLERANCING PER ASME Y14.5M.
2. 0.25 MAX RADII ON ALL CORNERS SHOWN SHARP.
3. ALL UNSPECIFIED RADII 0.50 MAX.
4. STANDARD COLORS FOR POLARIZATION (SEE CHART IN LEFT LOWER CORNER OF THE DRAWING SHEET.)
5. REFER TO "SAE/USCAR 12 CONNECTOR DESIGN CRITERIA" FOR ADDITIONAL REQUIREMENTS.
6. EXCEPT WHERE NOTED, DRAFT ON OUTSIDE SURFACES IS PERMISSIBLE WITHIN TOLERANCE.
7.  SYMBOL INDICATES DRAFT DIRECTION
8. FOR TERMINAL MATERIAL, DIMENSIONAL, AND COATING REQUIREMENTS SEE EWCAP-001 TERMINAL 120-T002
9. TO CLAIM USCAR COMPLIANCE, PARTS PRODUCED TO THIS FOOTPRINT DRAWING MUST BE TESTED TO AND MEET THE REQUIREMENTS OF SAE/USCAR 2.
10.  DENOTES DIMENSION THAT MAY BE UTILIZED TO MONITOR PART QUALITY.
11. WHEN USING SILVER PLATED TERMINALS, THE SILVER PLATING MUST STOP A MINIMUM OF 1mm FROM THE HEADER PLASTIC
12. BACK ANGLE IS REQUIRED TO MEET THE CONNECTOR RETENTION FORCE SPECIFICATION.
13. KEYING OPTION "A" SHOWN IN GENERAL VIEWS.
14. MATERIAL FLEXURAL MODULUS MUST BE GREATER THAN OR EQUAL TO 4500 MPa.



120-U-016-2-Z01



| TOLERANCES (UNLESS OTHERWISE SPECIFIED) | | | |
|---|----------|----------------------|------------------------|
| DIMENSIONS ARE IN MILLIMETERS | | | |
| ANGLES ± 0° 30' | | | |
| THIRD ANGLE PROJECTION | | | |
| USCAR-EWCAP | | | |
| SCALE | 5:1 | DRAWN BY | D.BENNETT |
| CHECKED BY | J.MILLER | DATE | 2-17-17 |
| TITLE | | | |
| 16 WAY 2X8 UNSEALED INTERFACE | | | |
| 1.2mm CONNECTORS | | | |
| SHEET | 2 of 2 | DRAWING NUMBER | 120-U-016-2-Z01 |
| SIZE | A2 | DO NOT SCALE DRAWING | COMPUTER AIDED DRAWING |
| REVISION | LEVEL | A | |

EWCAP Legal Notice
(Required on all EWCAP Drawings)
Revision 1-16-2015

NOTICE

EWCAP has selected common dimensions for the connector(s) depicted and described herein (listed below). Further, EWCAP has selected for publication this drawing (and its companion electronic model) prepared by Yazaki North America, Inc. as representative of a connector having these dimensions. In exchange for the consideration of the selection of this drawing for publication (including posting on EWCAP's web site) and other good and valuable consideration flowing from this selection, Yazaki North America, Inc. hereby agrees on behalf of itself and its successors and assigns, with respect to any copyrights it may have in this drawing as well as any patent rights it may have in the connector illustrated in this drawing, not to enforce such copyrights and patents against any person or entity on account of their activities to make, have made, use and sell the connector illustrated in this drawing for vehicular applications. The term "connector" as used in this paragraph is limited solely to the structure specifically illustrated in this drawing.

Signed  for Yazaki North America, Inc. Date 2/23/17

Name and title of signer: Kent Hoffman – Vice President, Component Business Unit

The person signing this Agreement represents and warrants that (1) he or she is duly authorized and has legal capacity to execute and deliver this Agreement on behalf of Yazaki North America, Inc., (2) the execution and delivery of this Agreement and the performance of Yazaki North America, Inc. pursuant to the terms outlined above have been duly authorized and that this Agreement is a valid and legal agreement binding on Yazaki North America, Inc. and enforceable in accordance with its terms.

No warranties or indemnities of any kind are made or implied by Yazaki North America, Inc. or EWCAP. In particular there are no express or implied warranties of fitness for a particular purpose, merchantability, non-infringement or any other warranty of any kind. In addition, there are no express or implied warranties or indemnities of any kind relating to third party claims arising under the intellectual property laws of any country. Anyone using the information in this drawing does so at their own risk.

Applicable EWCAP Drawing Numbers:
120-U-016-2-Z01

